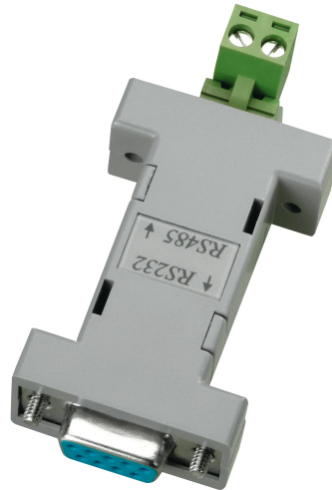


Interface Converter RS-232 To RS-485

Art. no. TV8469

Page 1 of 1



- Converts RS232 to RS485, half-duplex

With the interface converter you can control a PTZ Dome Camera (TV7600 - TV7604) from your PC. The interface converter is connected to the PC by a serial port (RS232), and the dome camera is connected to the interface converter with a 2-core RS485 bus cable. You can operate a total of 31 dome cameras with your PC. One dome camera is connected directly to the converter and the other 30 cameras are connected to each other. The maximum transmission range from the interface converter to the last dome camera is 1200 metres.

Technical Data:

Dimensions	(W x H x D) 17 x 33 x 53 mm
Connectible devices	31
Connections	RS-232 / RS-485
Baud rate	max. 115200 baud
Width	17 mm

Height	33 mm
Communication	half-duplex
Length	53 mm
Transmission distance	1200 m