

**Product number C15419_ZORYA-MINI**

Family	Zorya	FWHM	(simulated) 145
Type	Lens	Efficiency	(simulated) 98 %
LED	XP-E2	cd/Im	(simulated) 0.110
Color	Clear	Gerber File	Available
Diameter	24 mm		
Height	14.2 mm		
Style	Round		
Optic Material	PC		
Holder Material	-		
Fastening	["glue", "tape", "snaps", "clips", "robot"]		
Status	Production ready		

Product number CA15584_ZORYA-MINI-TAPE

Family	Zorya	FWHM	(simulated) 145
Type	Assembly	Efficiency	(simulated) 98 %
LED	XP-E2	cd/Im	(simulated) 0.110
Color	Clear	Gerber File	Available
Diameter	24 mm		
Height	14.6 mm		
Style	Round		
Optic Material	PC		
Holder Material	-		
Fastening	["tape", "snaps"]		
Status	Production ready		

NOTE: The typical divergence will be changed by different color, chip size and chip position tolerance. The typical total divergence is the full angle measured where the luminous intensity is half of the peak value.

GENERAL INFORMATION

- Product series especially designed & optimized for XP-E2 series of LEDs.
- Special care taken to make light distribution as uniform as possible.
- Lens material optical grade PC with high UV and temperature resistance (100 degrees of Celcius / 212 degrees of Fahrenheit). Allows use of high current and temperature conditions.

Please find more information about used materials from below:

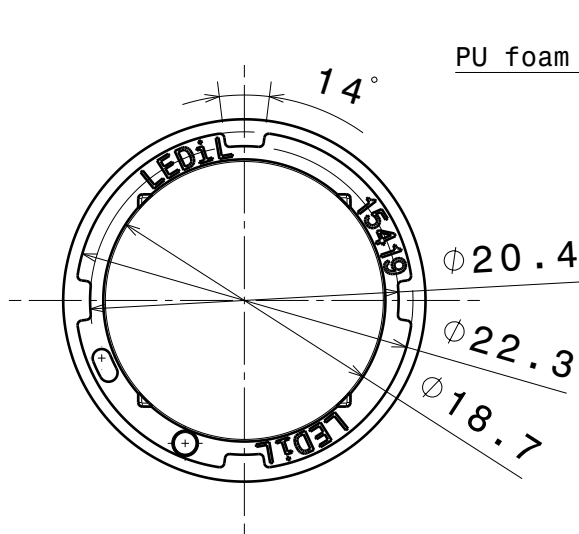
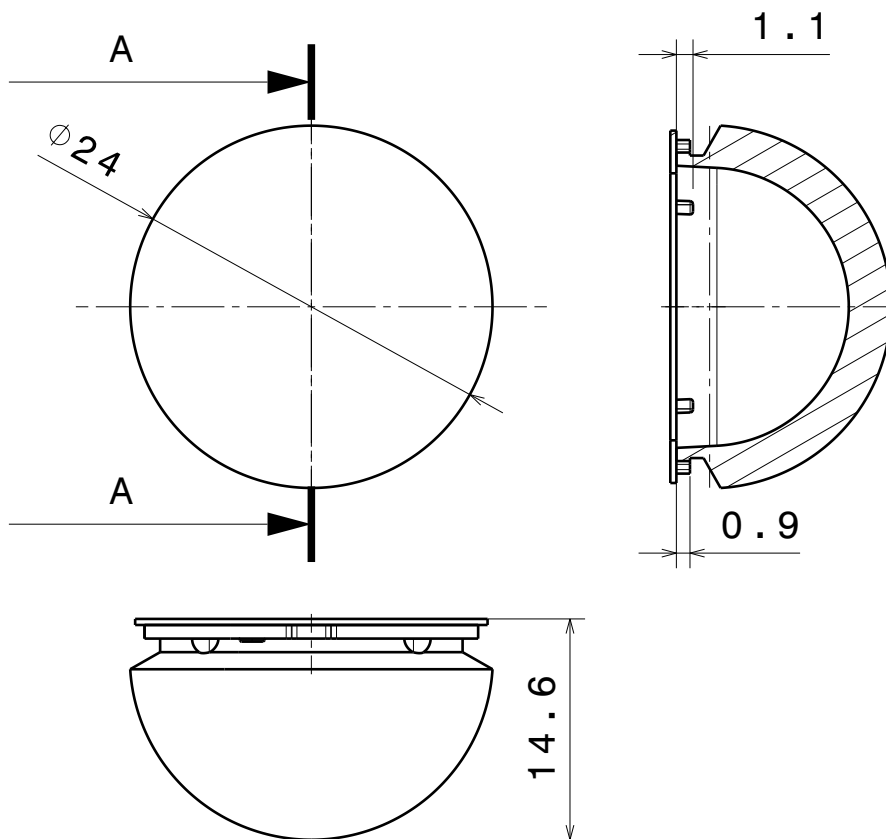
http://ledil.fi/sites/default/files/Documents/Technical/Material/PC%20Makrolon%202400_2407_2456_2458-UL.pdf

D

C

B

A



PU foam tape 0.4mm

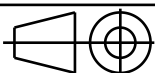
INDEX	PART NO	DESCRIPTION	MATERIAL	COLOUR
1	C15419	ZORYA-MINI	PC	Clear

Tolerances if not otherwise shown
According to DIN ISO 2768-1
Linear measures:
Up to 30mm class M, otherwise class C.
According to DIN ISO 2768-2
Form and position: class L

LEDiL

Ledil Oy
Salorankatu 10
FIN 24240 SALO
Finland

THIRD ANGLE PROJECTION:



DRAWING TITLE

CA15584_ZORYA-MINI-TAPE

This drawing is the property
of LEDiL Oy. It may not be
reproduced, copied or
communicated without a written
agreement with LEDiL Oy.

SIZE

A4

PART NUMBER

CA15584

SCALE

2:1

WEIGHT

2,4 g

SHEET

1/1

D

A