

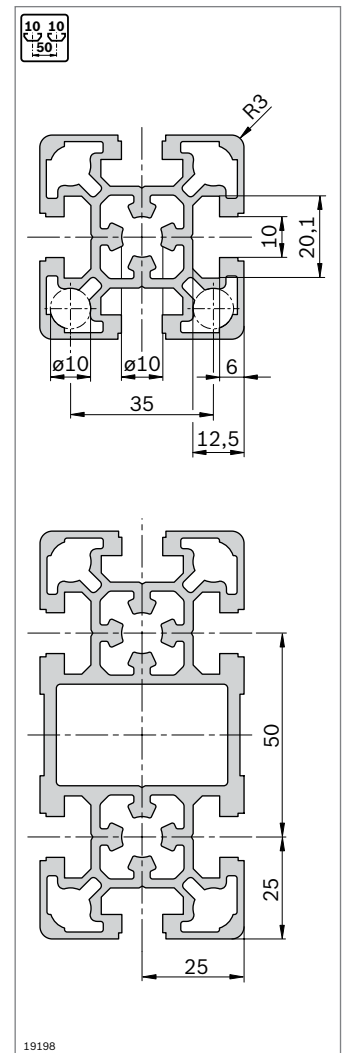
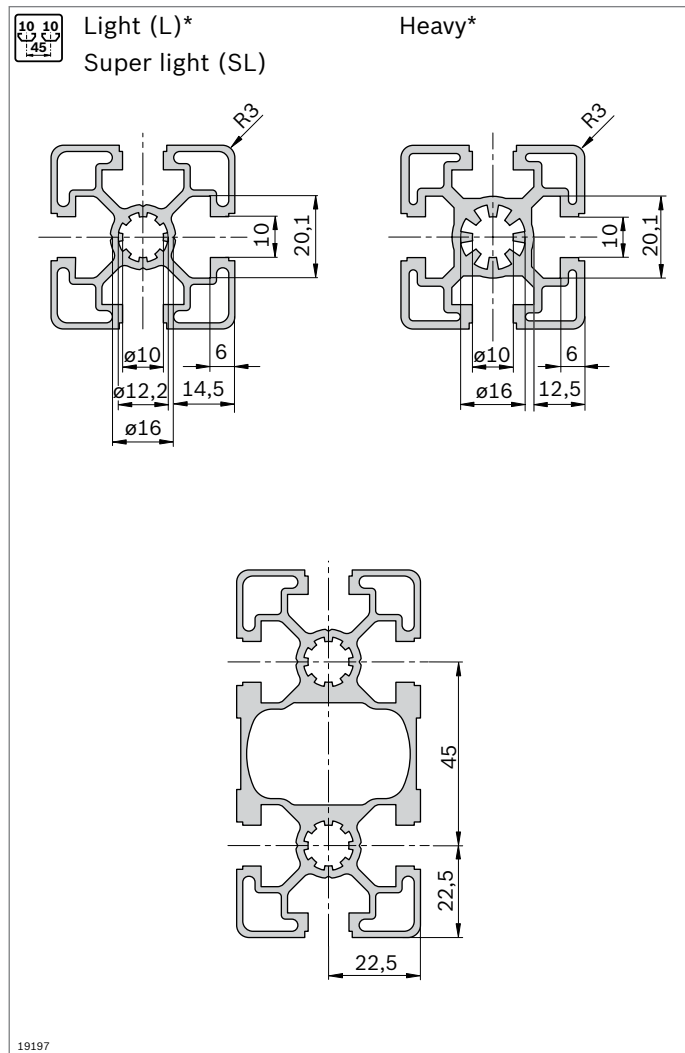
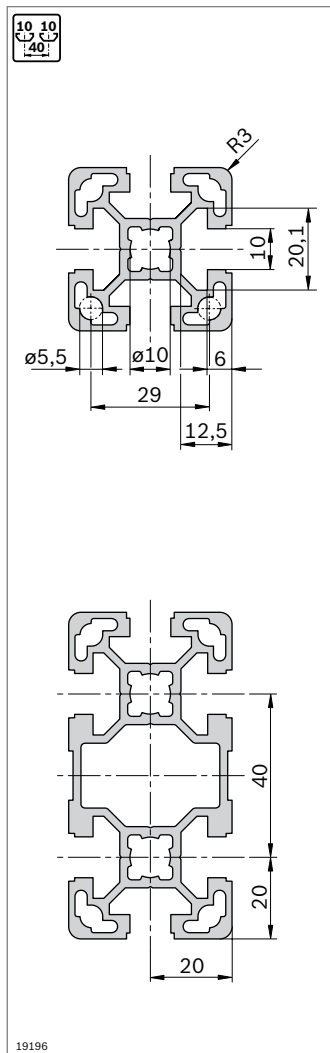
Strut profiles with 10 mm slot

The Rexroth modular profile system, with 10 mm slots in the modular dimensions 40 mm, 45 mm, 50 mm, and 60 mm, covers all conventional profile dimensions on the world market.

45 mm, and 50 mm, e.g. 50x50L) combine high strengths with minimum use of materials. This gives you a cost-effective and stable solution for the construction of tables, protection devices or frames, for instance.

Thanks to their computer-optimized design, the strut profiles L with 10 mm slot (modular dimensions 40 mm,

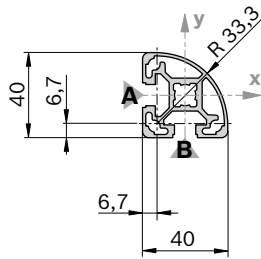
Slot, modular dimensions, central bore



*) The following L-profiles have a "heavy" slot geometry:
 45x90x90L; 45x90x90L 4N; 90x90L; 90x90L 4N; 90x90L 4NVS; 90x180L

40x40L R

A = 5,0 cm²
 I_x = 7,2 cm⁴
 I_y = 7,2 cm⁴
 W_x = 3,6 cm³
 W_y = 3,6 cm³
 m = 1,3 kg/m



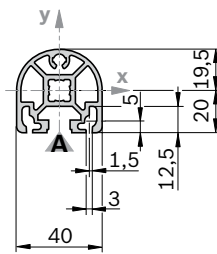
19208

Cover cap	Color	ESD	No.
40x40 R (1x)	Signal gray		20 3 842 548 784
40x40 R (1x)	Black		20 3 842 548 785

Material: PP

40x40 HR

A = 5,5 cm²
 I_x = 8,1 cm⁴
 I_y = 7,6 cm⁴
 W_x = 4,0 cm³
 W_y = 3,6 cm³
 m = 1,5 kg/m



19209

Cover cap	Color	ESD	No.
40x40 HR (1x)	Signal gray		20 3 842 548 786
40x40 HR (1x)	Black		20 3 842 548 787

Material: PP

Cap with hole ¹⁾	Color	ESD	No.
40x40 HR (1x)	Signal gray		20 3 842 548 786
40x40 HR (1x)	Black		20 3 842 548 787

Material: PP

¹⁾ The cover cap is also suitable for use with a hole, which can be broken out

40x40L R	L (mm)	No.
1 pcs	50 ... 6000	3 842 993 184 / L
20 pcs	6070	3 842 529 359

Quick & Easy (p. 2-8, see fold-out section)

40x40L R	3 842 993 725 / ...
Length L (mm)	50 ... 6000
Standard profile finishing (note minimum length, p. 2-25)	M12 / DB17 (A,B) ¹⁾
Customized profile finishing	—

¹⁾ For the specified slots

40x40 HR	L (mm)	No.
1 pcs	50 ... 6000	3 842 993 256 / L
1 pcs M12	110 ... 6000	3 842 993 257 / L
20 pcs	6070	3 842 529 381

Quick & Easy (p. 2-8, see fold-out section)

40x40 HR	3 842 993 723 / ...
Length L (mm)	50 ... 6000
Standard profile finishing (note minimum length, p. 2-25)	M12 / DB17
Customized profile finishing (L _{max} = 5400 mm)	DI / DIS / MT / MTS / MI / MIS / DG ¹⁾

¹⁾ DG_{max} = 45°; L_{min1} / L_{min2} = 370 / 440 mm