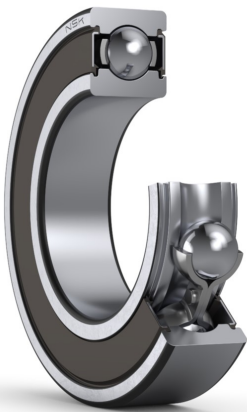




# PRODUCT DATASHEET

Datasheet creation date: 2025/07/08 5:11 (UTC)



## 6000VV

### Single-Row Deep Groove Ball Bearings

#### Parts Number

6000VVC3
----------

#### Boundary Dimensions

d	10	mm	Bore diameter
D	26	mm	Outside diameter
B	8	mm	Width
r (min.)	0.3	mm	Chamfer dimension

#### Basic Load Ratings

Cr	5050	N	Basic dynamic load rating
C0r	1970	N	Basic static load rating

#### Speeds

Grease	30000	min-1	Grease lubrication
--------	-------	-------	--------------------

#### Abutment and Fillet Dimensions

da (min.)	12	mm	Diameter of shaft abutment
da (max.)	13	mm	Diameter of shaft abutment
Da (max.)	24	mm	Diameter of housing abutment
ra (max.)	0.3	mm	Radius of shaft or housing fillet
Dx (min.)	0	mm	Diameter of snap ring recess in the housing
Cy (max.)	0	mm	Distance from outer ring side face to snap ring back face

#### Calculation factors

fo	12.4	Factor
----	------	--------

#### Additional information

z	7	Number of Balls
Dw	4.762	mm Ball Diameter

#### Mass

Mass approx.	0.018	kg	Mass approx.
--------------	-------	----	--------------

