

REFERENCE SPECIFICATIONS

-NFC 93425 (in compliance with HE 507)

PHYSICAL CHARACTERISTICS

-INSULATOR MATERIAL: THERMOPLASTIC UL94V0  
 -CONTACT MATERIAL: PHOSPHOR BRONZE

-ACCESSORIES: BRASS  
 -SHELLS: STEEL

ELECTRICAL CHARACTERISTICS

-NOMINAL CURRENT: 7.5A  
 -CONTACT RESISTANCE: <= 7.3 m ohms  
 -CONTACT/CONTACT : >=1000 V  
 -CONTACT/GROUND : >=1200 V  
 -INSULATION RESISTANCE: >=5000 MOhms

ENVIRONMENTAL CHARACTERISTICS

- CLIMATIC CATEGORY: 55/125/21  
 TEMPERATURE RANGE -55°C TO +125°C  
 DAMP HEAT STEADY STATE 21 DAYS  
 SALT SPRAY 48 HOURS

MECHANICAL CHARACTERISTICS

- RETENTION AGAINST TORQUE: - Threaded insert: 0.7 N.m minimum  
 - Female screw : 0.5 N.m minimum

NOTE RoHS INFORMATION

- The "LF" products meet european union Directives and other country regulations as described in GS-22-008.
- Termination plating spec:  
 Ni + Gold
- Active area plating spec:  
 Ni + Gold
- Shell plating :2 to 4µm Cu + Nickel + 3 to 10µmm Sn,pure bright
- Accessories: Sn pure bright + nickel
- Packaging spec: See GS-14-920

# DBL13W3S043A00LF

Series

Shell size: **E A B C D**  
 see sheet 2  
 Front accessory definition  
 see sheet 2

**Blank** :without accessory  
**L** :threaded insert M3  
**O** :threaded insert UNC 4-40

Layout of contacts (see sheet 3)

Contacts

**S** :Socket

Plating

**Blank** signal solder bucket 200 matings/unmatings  
**043** signal solder bucket 500 matings/unmatings

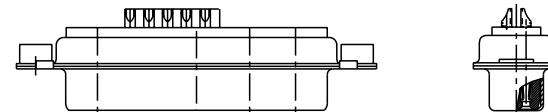
PCB accessory definition

**A** without accessory on PCB

Power contacts

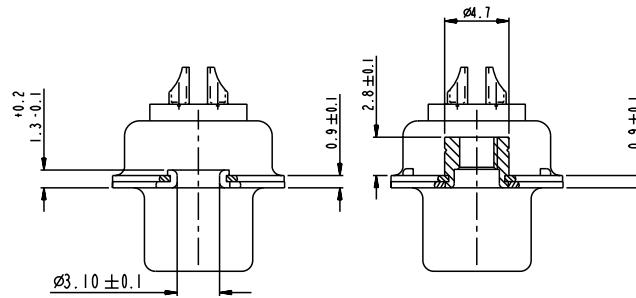
**00** without power contact

See note RoHS



13W3 FOR EXAMPLE

www.fciconnect.com				surface	tolerance std	projection	mm	
				ISO 1302	ISO 406 ISO 1101	TOLERANCES UNLESS OTHERWISE SPECIFIED		
				ANGULAR	0.X ±0.3	size	A2	Scale 2:1
				LINEAR	0.XX ±0.1	ECN		LS07-0273
				0° ±2'	0.XXX ±0.05	Product family		Spec ref
Dr	M PESSON	2005-10-11	Eng	P LEGARE	2005-10-11	FCI		SUB FEMALE DW
Chr			Appr			mixed power+solder bucket		Rev. C
rev	ecn no	dr	date			cat no	C01-8639-2303	
A	LS05-0101	MPE	2005-10-11			CUSTOMER	sheet 1 of 7	
B	LS06-0208	LGO	2006-12-12					
C	LS07-0273	MPE	2007/10/31					



FRONT ACCESSORY	Blank without	L insert M3
		O insert UNC 4.40
PCB ACCESSORIES	A without	A without

PART NUMBER	MATINGS/ UNMATINGS	FRONT ACCESSORY	PCB ACCESSORIES
D*xWxSA00LF	200	without	without
D*LxWxSA00LF	200	insert M3	without
D*OxWxSA00LF	200	insert UNC 4.40	without
D*xWxS043A00LF	500	without	without
D*LxWxS043A00LF	500	insert M3	without
D*OxWxS043A00LF	500	insert UNC 4.40	without

shell size	LAYOUTS
#	xWx
E	5W1
A	11W1
A	7W2
B	21W1
B	17W2
B	13W3
B	9W4
C	25W3
C	21WA4
C	27W2
D	47W1
D	24W7
D	36W4

Copyright FCJ.

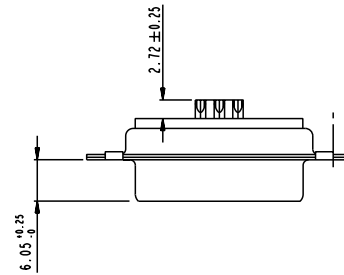
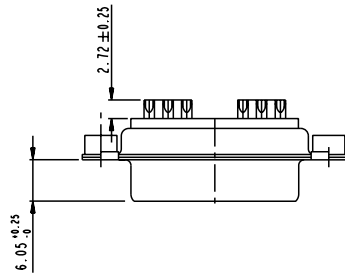
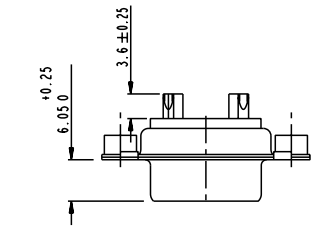
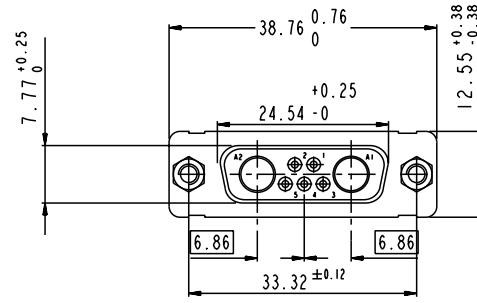
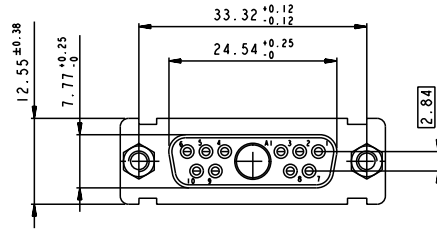
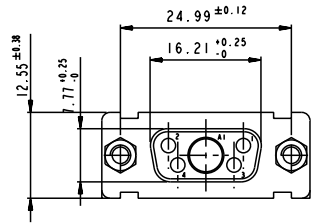
www.fciconnect.com		surface ISO 1302	tolerance std ISO 406 ISO 1101	projection mm
		TOLERANCES UNLESS OTHERWISE SPECIFIED		
Dr	M PESSON	2005-10-11	ANGULAR	0.X ±0.3
Eng	P LEGARE	2005-10-11	LINEAR	0.XX ±0.1
Chr			0° ±2°	0.XXX ±0.05
Appr			Product family	Spec ref
FCJ		SUB FEMALE DW		Rev. C
mixed power+solder bucket		catag no	CUSTOMER	sheet 2 of 7
		ang no	C01-8639-2303	

SCALE : 4

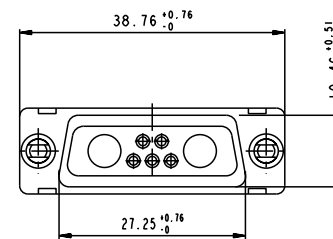
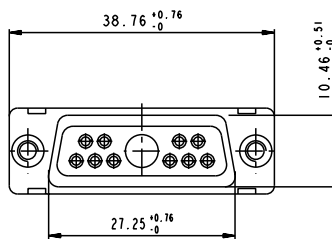
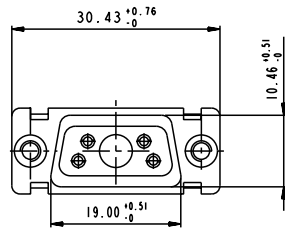
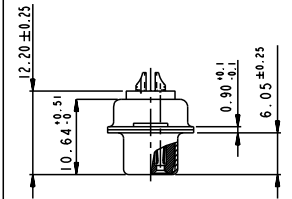
5W1

11W1

7W2



SIDE VIEW FOR LAYOUTS: E A B C



Floating signal contacts



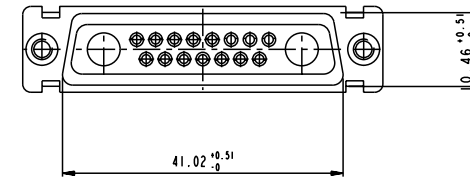
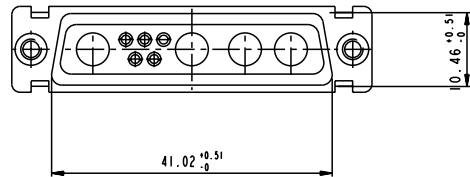
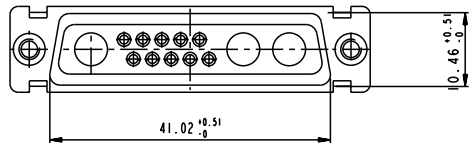
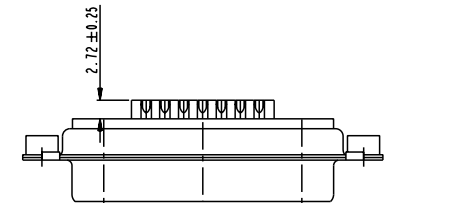
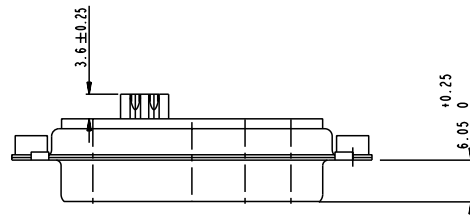
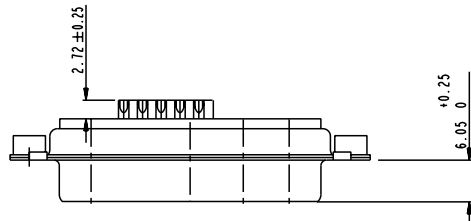
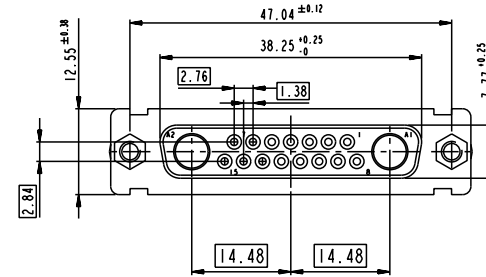
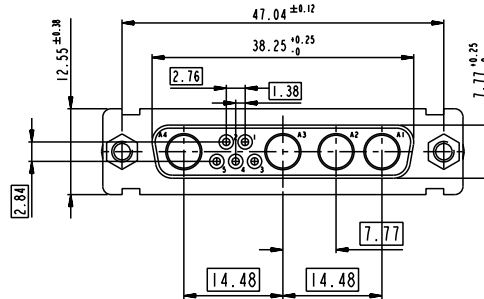
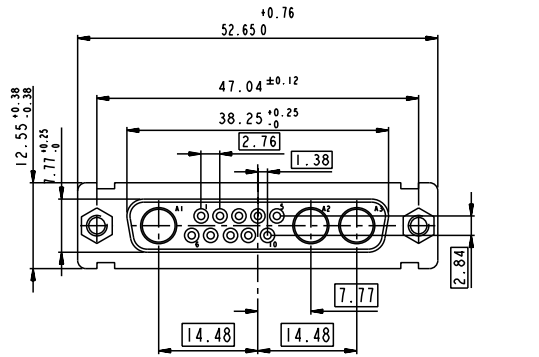
Copyright FCI.

www.fciconnect.com		surface ISO 1302	tolerance std ISO 406 ISO 1101	projection mm		
		TOLERANCES UNLESS OTHERWISE SPECIFIED				
Dr	M PESSON	2005-10-11	ANGULAR	0.X	±0.3	size A2 Scale 2:1
Eng	P LEGARE	2005-10-11	LINEAR	0.XX	±0.1	ECN LS07-0273
Chr			0° ±2°	0.XXX	±0.05	Product family - Spec ref
Appr						
FCI		SUB FEMALE DW		C01-8639-2303		Rev. C
mixed power+solder bucket		catalog no		CUSTOMER		sheet 3 of 7

13W3

9W4

17W2

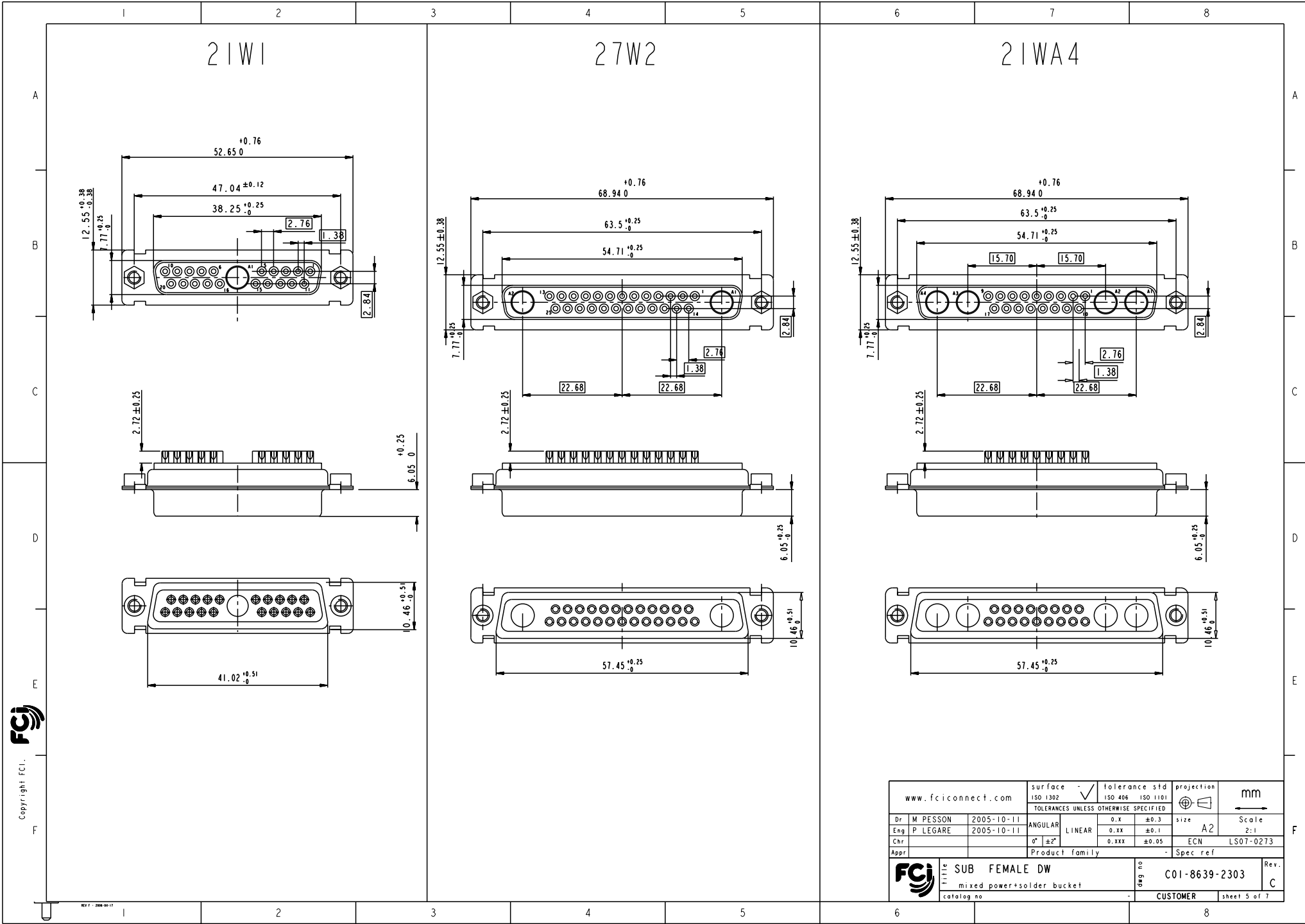


Floating signal contacts



Copyright FCJ.

www.fciconnect.com		surface ISO 1302	tolerance std ISO 406 ISO 1101	projection OTHERWISE SPECIFIED	mm
Dr M PESSON	2005-10-11	ANGULAR	0.X ±0.3	size A2	Scale 2:1
Eng P LEGARE	2005-10-11	LINEAR	0.XX ±0.1	ECN	LS07-0273
Chr		0° ±2°	0.XXX ±0.05	Spec ref	
Appr		Product family			
SUB FEMALE DW mixed power+solder bucket catalog no		ang no C01-8639-2303	Rev. C	CUSTOMER sheet 4 of 7	



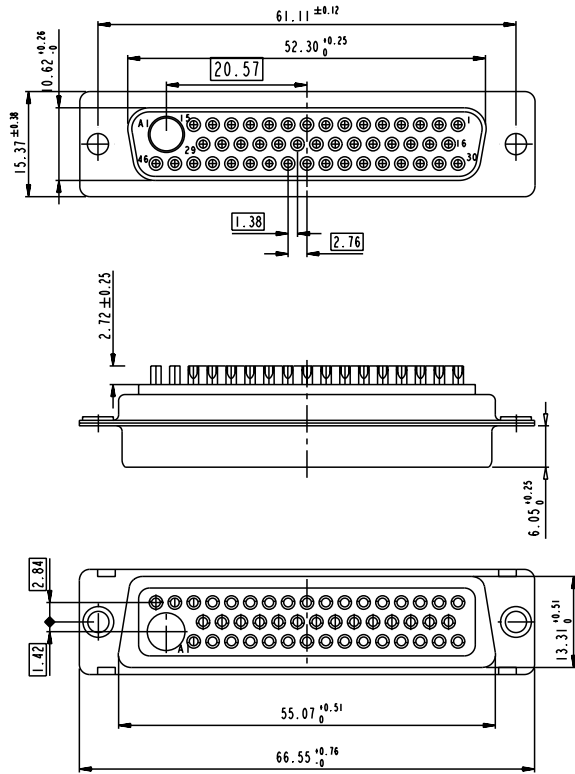
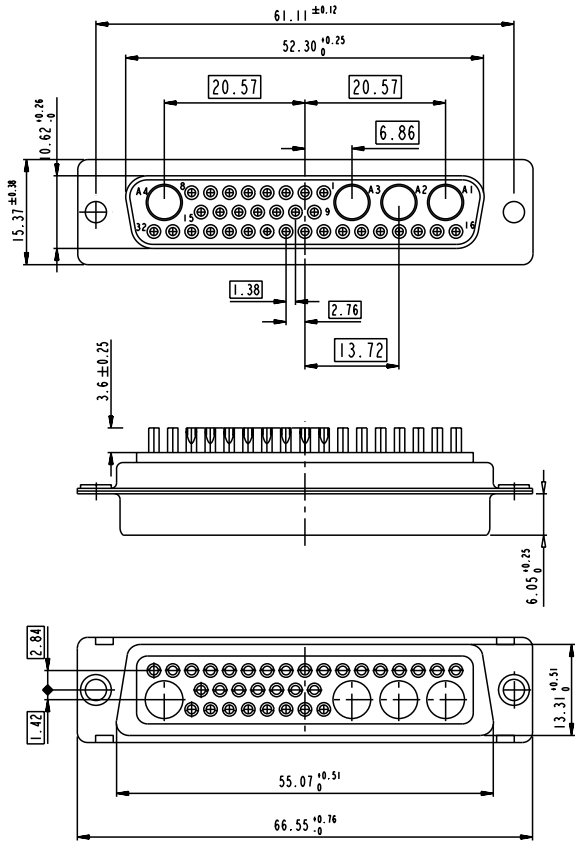
Copyright FCI.

www.fciconnect.com		surface ISO 1302	tolerance std ISO 406 ISO 1101	projection mm
		TOLERANCES UNLESS OTHERWISE SPECIFIED		
Dr M PESSON	2005-10-11	ANGULAR	0.X ±0.3	size A2 Scale 2:1
Eng P LEGARE	2005-10-11	LINEAR	0.XX ±0.1	ECN LS07-0273
Chr		0° ±2°	0.XXX ±0.05	Spec ref
Appr		Product family		
FCI SUB FEMALE DW		ang no	C01-8639-2303	
mixed power+solder bucket		cat no	CUSTOMER sheet 5 of 7	

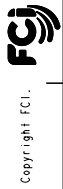


36W4

47W1



Floating signal contacts



Copyright FCI.

www.fciconnect.com		surface ISO 1302	tolerance std ISO 406 ISO 1101	projection mm
		TOLERANCES UNLESS OTHERWISE SPECIFIED		
Dr M PESSON	2005-10-11	ANGULAR	0.X ±0.3	size A2 Scale 2:1
Eng P LEGARE	2005-10-11	LINEAR	0.XX ±0.1	ECN LS07-0273
Chr		0° ±2°	0.XXX ±0.05	Product family - Spec ref
Appr		Product family		
FCI		SUB FEMALE DW		Rev. C
mixed power+solder bucket		catalog no	C01-8639-2303	sheet 7 of 7
		CUSTOMER		