



<b>Title of Change:</b>	FPF3188AUCX New Carrier Tape Design Qualification
<b>Effective date:</b>	19 Apr 2021
<b>Contact information:</b>	Contact your local ON Semiconductor Sales Office or <a href="mailto:Michelle.Lyn.Alaba@onsemi.com">Michelle.Lyn.Alaba@onsemi.com</a>
<b>Type of notification:</b>	This Product Bulletin is for notification purposes only. ON Semiconductor will proceed with implementation of this change upon publication of this Product Bulletin.
<b>Change Category:</b>	Assembly Change
<b>Change Sub-Category(s):</b>	Material Change

**Sites Affected:**

ON Semiconductor Sites	External Foundry/Subcon Sites
ON Semiconductor Cebu, Philippines	None

**Description and Purpose:**

**Qualification of New Carrier Tape Design for FPF3188AUCX WLSCP Device**

There are no product material changes as a result of this change.

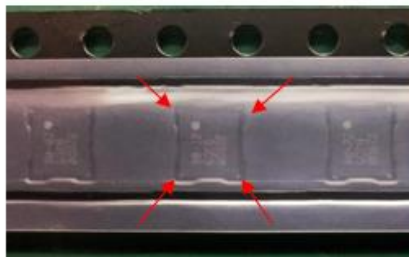
There is no product marking change as a result of this change.

New carrier tape design with Corner relief for FPF3188AUCX WLSCP Device with changes comparison as below:

**FROM: No Corner Relief**



**TO: With Corner Relief**



Carrier Tape	Details	Chipping All Side Inspection	Remarks	Result
New Carrier Tape with Corner Relief	Reel Form; 1 meter	0/100	No chipping anomaly found	Passed
	Reel Form; 1.5 meter	0/100	No chipping anomaly found	Passed
	Reel Form; 2 meters	0/100	No chipping anomaly found	Passed
	Pizza Box; 1 meter	0/100	No chipping anomaly found	Passed
	Pizza Box; 1.5 meter	0/100	No chipping anomaly found	Passed
	Pizza Box; 2 meters	0/100	No chipping anomaly found	Passed
	Shipping Box; 1 meter	0/100	No chipping anomaly found	Passed
	Shipping Box; 1.5 meter	0/100	No chipping anomaly found	Passed
	Shipping Box; 2 meters	0/100	No chipping anomaly found	Passed

**List of Affected Standard Parts:**

**Note:** Only the standard (off the shelf) part numbers are listed in the parts list. Any custom parts affected by this PCN are shown in the customer specific PCN addendum in the PCN email notification, or on the [PCN Customized Portal](#).

FPF3188AUCX		
-------------	--	--