

4DHDMI



Datasheet

Revision 1.2

Copyright © 2026 4D Systems

Content may change at any time. Please refer to the resource centre for latest documentation.

Contents

1. Description	6
2. General Details	8
2.1. HDMI Information	8
2.2. Power Requirements	8
2.3. Audio Output	8
2.4. Brightness Adjustment	9
3. Product Selection	10
3.1. 4DHDMI Model Table	10
4. Specific Information	15
4.1. 4DHDMI-34-800-800-CT-CLB-400	15
4.2. 4DHDMI-34-800-800-NT-NM-400	15
4.3. 4DHDMI-40-720-720-CT-CLB-800	15
4.4. 4DHDMI-40-720-720-NT-NM-800	15
4.5. 4DHDMI-43-480-272-CT-EAR-500	16
4.6. 4DHDMI-43-480-272-CT-EAR-1000	20
4.7. 4DHDMI-43-480-272-NT-EAR-500	20
4.8. 4DHDMI-43-480-272-NT-EAR-1000	20
4.9. 4DHDMI-43-800-480-CT-EAR-500	21
4.10. 4DHDMI-43-800-480-CT-EAR-1000	25
4.11. 4DHDMI-43-800-480-NT-EAR-500	25
4.12. 4DHDMI-43-800-480-NT-EAR-1000	25
4.13. 4DHDMI-50-800-480-CT-EAR-500	26
4.14. 4DHDMI-50-800-480-CT-EAR-1000	30
4.15. 4DHDMI-50-800-480-NT-EAR-500	30
4.16. 4DHDMI-50-800-480-NT-EAR-1000	30
4.17. 4DHDMI-54-1080-1920-CT-NM-400	31
4.18. 4DHDMI-60-1080-2160-CT-NM-600	35
4.19. 4DHDMI-70-800-480-CT-EAR-500	39

4.20. 4DHDMI-70-800-480-NT-EAR-500	43
4.21. 4DHDMI-70-1024-600-CT-EAR-500	44
4.22. 4DHDMI-70-1024-600-CT-EAR-1000	47
4.23. 4DHDMI-70-1024-600-NT-EAR-500	50
4.24. 4DHDMI-70-1024-600-NT-EAR-1000	50
4.25. 4DHDMI-70-1280-800-CT-EAR-500	51
4.26. 4DHDMI-70-1280-800-CT-EAR-1000	55
4.27. 4DHDMI-70-1280-800-NT-EAR-500	59
4.28. 4DHDMI-70-1280-800-NT-EAR-1000	59
4.29. 4DHDMI-80-1280-800-CT-EAR-500	60
4.30. 4DHDMI-80-1280-800-CT-EAR-1000	64
4.31. 4DHDMI-80-1280-800-CT-NM-500	68
4.32. 4DHDMI-80-1280-800-CT-NM-1000	68
4.33. 4DHDMI-80-1280-800-CT-CLB-500	68
4.34. 4DHDMI-80-1280-800-CT-CLB-1000	68
4.35. 4DHDMI-80-1280-800-NT-EAR-500	68
4.36. 4DHDMI-80-1280-800-NT-EAR-1000	68
4.37. 4DHDMI-80-1280-800-NT-NM-500	68
4.38. 4DHDMI-80-1280-800-NT-NM-1000	68
4.39. 4DHDMI-90-1024-600-CT-EAR-500	69
4.40. 4DHDMI-90-1024-600-CT-EAR-1000	72
4.41. 4DHDMI-90-1024-600-CT-NM-500	75
4.42. 4DHDMI-90-1024-600-CT-NM-1000	75
4.43. 4DHDMI-90-1024-600-CT-CLB-500	75
4.44. 4DHDMI-90-1024-600-CT-CLB-1000	75
4.45. 4DHDMI-90-1024-600-NT-EAR-500	75
4.46. 4DHDMI-90-1024-600-NT-EAR-1000	75
4.47. 4DHDMI-90-1024-600-NT-NM-500	75
4.48. 4DHDMI-90-1024-600-NT-NM-1000	75
4.49. 4DHDMI-90-1280-800-CT-EAR-500	76
4.50. 4DHDMI-90-1280-800-CT-EAR-1000	80

4.51. 4DHDMI-90-1280-800-CT-NM-500	84
4.52. 4DHDMI-90-1280-800-CT-NM-1000	84
4.53. 4DHDMI-90-1280-800-CT-CLB-500	84
4.54. 4DHDMI-90-1280-800-CT-CLB-1000	84
4.55. 4DHDMI-90-1280-800-NT-EAR-500	84
4.56. 4DHDMI-90-1280-800-NT-EAR-1000	84
4.57. 4DHDMI-90-1280-800-NT-NM-500	84
4.58. 4DHDMI-90-1280-800-NT-NM-1000	84
4.59. 4DHDMI-101-1024-600-CT-EAR-500	85
4.60. 4DHDMI-101-1024-600-CT-EAR-1000	88
4.61. 4DHDMI-101-1024-600-CT-NM-500	91
4.62. 4DHDMI-101-1024-600-CT-NM-1000	91
4.63. 4DHDMI-101-1024-600-CT-CLB-500	91
4.64. 4DHDMI-101-1024-600-CT-CLB-1000	91
4.65. 4DHDMI-101-1024-600-NT-EAR-500	91
4.66. 4DHDMI-101-1024-600-NT-EAR-1000	91
4.67. 4DHDMI-101-1024-600-NT-NM-500	91
4.68. 4DHDMI-101-1024-600-NT-NM-1000	91
4.69. 4DHDMI-101-1280-800-CT-NM-300(L)	91
4.70. 4DHDMI-101-1280-800-NT-NM-300(L)	91
4.71. 4DHDMI-101-1280-800-CT-EAR-500	92
4.72. 4DHDMI-101-1280-800-CT-EAR-1000	96
4.73. 4DHDMI-101-1280-800-CT-NM-500	100
4.74. 4DHDMI-101-1280-800-CT-NM-1000	100
4.75. 4DHDMI-101-1280-800-CT-CLB-500	100
4.76. 4DHDMI-101-1280-800-CT-CLB-1000	100
4.77. 4DHDMI-101-1280-800-NT-EAR-500	100
4.78. 4DHDMI-101-1280-800-NT-EAR-1000	100
4.79. 4DHDMI-101-1280-800-NT-NM-500	100
4.80. 4DHDMI-101-1280-800-NT-NM-1000	100
4.81. 4DHDMI-101-1920-1200-CT-NM-600	101

4.82. 4DHDMI-101-1920-1200-CT-NM-800	104
4.83. 4DHDMI-101-1920-1200-NT-NM-600	107
4.84. 4DHDMI-101-1920-1200-NT-NM-800	107
4.85. 4DHDMI-121-1280-800-CT-NM-500	107
4.86. 4DHDMI-121-1280-800-CT-NM-850	107
4.87. 4DHDMI-121-1280-800-CT-EAR-500	108
4.88. 4DHDMI-121-1280-800-CT-EAR-850	111
4.89. 4DHDMI-121-1280-800-NT-NM-500	114
4.90. 4DHDMI-121-1280-800-NT-NM-850	114
4.91. 4DHDMI-121-1280-800-NT-EAR-500	114
4.92. 4DHDMI-121-1280-800-NT-EAR-850	114
4.93. 4DHDMI-156-1920-1080-CT-CLB-500	115
4.94. 4DHDMI-156-1920-1080-CT-CLB-1100	119
4.95. 4DHDMI-156-1920-1080-NT-NM-500	123
4.96. 4DHDMI-156-1920-1080-NT-NM-1100	127
5. Part Number Breakdown	131
6. Revision History	132
7. Legal Notice	133
7.1. Proprietary Information	133
7.2. Disclaimer of Warranties & Limitations of Liabilities	133

1. Description

This datasheet covers all of the 4DHDMI Series of display products.

Any models that are listed in this Datasheet that are not shown on our website, or a listed but state 'Coming Soon' are still either in development or are coming soon. Ask our Sales team for information and an ETA.

The 4DHDMI Series has a wide selection of sizes of HDMI Monitors / Display products, which can be integrated into products, used for development and engineering work, or by End-Users in the home/work/car etc. They can all interface to virtually any HDMI output product such as a Single Board Computer (SBC), PC, MAC, DVD/Blu-ray Players, etc.

In the range of 4DHDMI displays, there are both traditional rectangular displays as well as round displays. Both offer a wide range of final application uses.

Round Displays are available with 3.4" and 4.0" diameter TFT LCD's, while rectangular TFT LCD displays are available in 4.3", 5.0", 7.0", 8.0", 9.0", 10.1", 12.1" and 15.6" sizes. There are a number of resolutions and brightness options to choose from, along with non-touch and Capacitive Touch versions. In addition to these, there are also two very high contrast 5.48" and 6.01" AMOLED displays, which feature a huge 100000:1 contrast ratio.

Some models offer a mounting solution, such as mounting tabs off the PCBA, or mounting tabs off the LCD itself, and some offer no specific mounting solution - leaving it up to the User to mount as they see fit. Cover Lens Bezel versions are available as a customisable option, where a glass bezel of your required size, shape and colour (with or without logos) can be made to order. Cover Lens Bezel mounting is available in all sizes, not just what is listed, so if you have a requirement that differs from what is listed, please make contact with our Sales team. Refer to the Notes after the **4DHDMI Model Table** for more information.

Coupled with these options, it is also possible to custom order any of these with various Cover Glass Treatments, such as Anti Glare (AG), Anti Reflective (AR), and Anti Fingerprint (AF), to better suit the situation these products will be used in. As a standard option, the displays do not have any Cover Glass Treatments.

Most 4DHDMI products are capable of being USB Powered (feature a USB port, either microUSB or USB-C depending on the model), and some also offer a 12VDC Barrel Jack. Some of the larger sizes can only be powered of 12V. Please see details specific to each size.

Different models feature different HDMI port sizes, some are Full-Sized, some are Mini-HDMI and one is micro-HDMI. Please refer to each specific product information to determine what is used on the product of interest.

Almost all 4DHMI products have an adjustable backlight, controlled either by a button control or via a menu system (OSD), except the 3.5" and 4.0" round models, and the 10.1" 'L' models which only offer a fixed brightness level. Some models support DDC by default, allowing software control of the brightness, via DDC/CI Protocol.

Customisations can be possible, please discuss with our Sales Team regarding your requirements. More advanced control such as Operating System DDC/CI Protocol control may also be able to be implemented in models which don't currently support them, please speak to us for more information, and customisable options.

2. General Details

2.1. HDMI Information

Every 4DHDMI product is compliant with HDMI v1.4, and utilises a standard HDMI interface.

Some products feature a full-sized HDMI port, some feature a mini-HDMI port, and some feature a micro-HDMI port. The appropriate cable or adaptor is therefore required. Please refer to the specific information regarding the model you are interested in, for more detail.

Note

Each display ships with a 50cm long HDMI cable, appropriate for the model, unless larger or custom orders do not require this.

2.2. Power Requirements

Most 4DHDMI products are capable of being powered over USB. Some models have 2 USB ports, which can aid in achieving enough current from the USB ports to power the 4DHDMI product, while some have 1.

Some models have one or two micro-USB ports, while some have one or two USB-C ports. The second USB port is typically used for the Touch interface to the Computer, however it also parallels the power to the first USB port. On non-Touch models, if two USB ports are provided, they both function as power input USB's.

Some models also feature a DC-Jack, where 12VDC power can be supplied via a standard barrel jack connector, instead of using USB Power. On some of the larger sizes, this DC-Jack or 12V input is the primary way to power the module - as 5V from USB is not sufficient as a power source.

Note

1. Each display ships with a 50cm long USB cable, appropriate for the model, unless larger or custom orders do not require this.
2. Please refer to the specific model information for power usage requirements.
3. On models which feature as 12V DC-Jack, cables and power adaptors are not provided, however please contact our Sales Team if you require a solution here or have specific requirements.

2.3. Audio Output

HDMI is capable of carrying Audio along with the display signals, and some 4DHDMI models are capable of powering a speaker and/or having a 3.5mm stereo headphone style jack. Not all models support Audio, please refer to the specific information of each model.

2.4. Brightness Adjustment

Most 4DHDMI models have the ability to have the backlight brightness adjusted to suit the end application, or the end-users preference.

Some models feature an OSD (On Screen Display) menu system, where the brightness can be adjusted with the buttons provided, and saved. Some models do not have buttons on them directly, and require a plug-in button board. By default, the display modules do not come with this external button board, however it is available on request from our Sales Team, please make contact with your requirements.

Some models feature a single push button on the PCBA, which when pressed will step and cycle through the various brightness options available, and the selection will be saved.

On the Round 4DHDMI products and 10.1" 'L' models, brightness adjustment is not available, and is at a fixed brightness - this cannot be changed by the end-user.

3. Product Selection

Click on the Model Number from the table below, to jump to the section in the Datasheet that is specific to that model, including its mechanical drawing.

3.1. 4DHDMI Model Table


Model Number	Display Size / Type	Resolution	Brightness (cd/m2)	Touch Type	Mounting Type
4DHDMI-34-800-800-CT-CLB-400	3.4" Round LCD	800 x 800	400	Capacitive Touch	Cover Lens Bezel
4DHDMI-34-800-800-NT-NM-400	3.4" Round LCD	800 x 800	400	Non Touch	N/A
4DHDMI-40-720-720-CT-CLB-800	4.0" Round LCD	720 x 720	800	Capacitive Touch	Cover Lens Bezel
4DHDMI-40-720-720-NT-NM-800	4.0" Round LCD	720 x 720	800	Non Touch	N/A
4DHDMI-43-480-272-CT-EAR-500	4.3" LCD	480 x 272	500	Capacitive Touch	PCBA Tabs
4DHDMI-43-480-272-CT-EAR-1000	4.3" LCD	480 x 272	1000	Capacitive Touch	PCBA Tabs
4DHDMI-43-480-272-NT-EAR-500	4.3" LCD	480 x 272	500	Non Touch	PCBA Tabs
4DHDMI-43-480-272-NT-EAR-1000	4.3" LCD	480 x 272	1000	Non Touch	PCBA Tabs
4DHDMI-43-800-480-CT-EAR-500	4.3" LCD	800 x 480	500	Capacitive Touch	PCBA Tabs
4DHDMI-43-800-480-CT-EAR-1000	4.3" LCD	800 x 480	1000	Capacitive Touch	PCBA Tabs
4DHDMI-43-800-480-NT-EAR-500	4.3" LCD	800 x 480	500	Non Touch	PCBA Tabs
4DHDMI-43-800-480-NT-EAR-1000	4.3" LCD	800 x 480	1000	Non Touch	PCBA Tabs
4DHDMI-50-800-480-CT-EAR-500	5.0" LCD	800 x 480	500	Capacitive Touch	PCBA Tabs
4DHDMI-50-800-480-CT-EAR-1000	5.0" LCD	800 x 480	1000	Capacitive Touch	PCBA Tabs
4DHDMI-50-800-480-NT-EAR-500	5.0" LCD	800 x 480	500	Non Touch	PCBA Tabs
4DHDMI-50-800-480-NT-EAR-1000	5.0" LCD	800 x 480	1000	Non Touch	PCBA Tabs
4DHDMI-54-1080-1920-CT-NM-400	5.48" AMOLED	1080 x 1920	400	Capacitive Touch	N/A
4DHDMI-60-1080-2160-CT-NM-600	6.01" AMOLED	1080 x 2160	600	Capacitive Touch	N/A
4DHDMI-70-800-480-CT-EAR-500	7.0" LCD	800 x 480	500	Capacitive Touch	PCBA Tabs
4DHDMI-70-800-480-NT-EAR-500	7.0" LCD	800 x 480	500	Non Touch	PCBA Tabs
4DHDMI-70-1024-600-CT-EAR-500	7.0" LCD	1024 x 600	500	Capacitive Touch	Display Tabs
	7.0" LCD	1024 x 600	1000		Display Tabs

Model Number	Display Size / Type	Resolution	Brightness (cd/m2)	Touch Type	Mounting Type
4DHDMI-70-1024-600-CT-EAR-1000				Capacitive Touch	
4DHDMI-70-1024-600-NT-EAR-500	7.0" LCD	1024 x 600	500	Non Touch	Display Tabs
4DHDMI-70-1024-600-NT-EAR-1000	7.0" LCD	1024 x 600	1000	Non Touch	Display Tabs
4DHDMI-70-1280-800-CT-EAR-500	7.0" LCD	1280 x 800	500	Capacitive Touch	Display Tabs
4DHDMI-70-1280-800-CT-EAR-1000	7.0" LCD	1280 x 800	1000	Capacitive Touch	Display Tabs
4DHDMI-70-1280-800-NT-EAR-500	7.0" LCD	1280 x 800	500	Non Touch	Display Tabs
4DHDMI-70-1280-800-NT-EAR-1000	7.0" LCD	1280 x 800	1000	Non Touch	Display Tabs
4DHDMI-80-1280-800-CT-EAR-500	8.0" LCD	1280 x 800	500	Capacitive Touch	Display Tabs
4DHDMI-80-1280-800-CT-EAR-1000	8.0" LCD	1280 x 800	1000	Capacitive Touch	Display Tabs
4DHDMI-80-1280-800-CT-NM-500	8.0" LCD	1280 x 800	500	Capacitive Touch	N/A
4DHDMI-80-1280-800-CT-NM-1000	8.0" LCD	1280 x 800	1000	Capacitive Touch	N/A
4DHDMI-80-1280-800-CT-CLB-500	8.0" LCD	1280 x 800	500	Capacitive Touch	Cover Lens Bezel
4DHDMI-80-1280-800-CT-CLB-1000	8.0" LCD	1280 x 800	1000	Capacitive Touch	Cover Lens Bezel
4DHDMI-80-1280-800-NT-EAR-500	8.0" LCD	1280 x 800	500	Non Touch	Display Tabs
4DHDMI-80-1280-800-NT-EAR-1000	8.0" LCD	1280 x 800	1000	Non Touch	Display Tabs
4DHDMI-80-1280-800-NT-NM-500	8.0" LCD	1280 x 800	500	Non Touch	N/A
4DHDMI-80-1280-800-NT-NM-1000	8.0" LCD	1280 x 800	1000	Non Touch	N/A
4DHDMI-90-1024-600-CT-EAR-500	9.0" LCD	1024 x 600	500	Capacitive Touch	Display Tabs
4DHDMI-90-1024-600-CT-EAR-1000	9.0" LCD	1024 x 600	1000	Capacitive Touch	Display Tabs
4DHDMI-90-1024-600-CT-NM-500	9.0" LCD	1024 x 600	500	Capacitive Touch	N/A
4DHDMI-90-1024-600-CT-NM-1000	9.0" LCD	1024 x 600	1000	Capacitive Touch	N/A
4DHDMI-90-1024-600-CT-CLB-500	9.0" LCD	1024 x 600	500	Capacitive Touch	Cover Lens Bezel
4DHDMI-90-1024-600-CT-CLB-1000	9.0" LCD	1024 x 600	1000	Capacitive Touch	Cover Lens Bezel
	9.0" LCD	1024 x 600	500	Non Touch	Display Tabs

Model Number	Display Size / Type	Resolution	Brightness (cd/m ²)	Touch Type	Mounting Type
4DHDMI-90-1024-600-NT-EAR-500					
4DHDMI-90-1024-600-NT-EAR-1000	9.0" LCD	1024 x 600	1000	Non Touch	Display Tabs
4DHDMI-90-1024-600-NT-NM-500	9.0" LCD	1024 x 600	500	Non Touch	N/A
4DHDMI-90-1024-600-NT-NM-1000	9.0" LCD	1024 x 600	1000	Non Touch	N/A
4DHDMI-90-1280-800-CT-EAR-500	9.0" LCD	1280 x 800	500	Capacitive Touch	Display Tabs
4DHDMI-90-1280-800-CT-EAR-1000	9.0" LCD	1280 x 800	1000	Capacitive Touch	Display Tabs
4DHDMI-90-1280-800-CT-NM-500	9.0" LCD	1280 x 800	500	Capacitive Touch	N/A
4DHDMI-90-1280-800-CT-NM-1000	9.0" LCD	1280 x 800	1000	Capacitive Touch	N/A
4DHDMI-90-1280-800-CT-CLB-500	9.0" LCD	1280 x 800	500	Capacitive Touch	Cover Lens Bezel
4DHDMI-90-1280-800-CT-CLB-1000	9.0" LCD	1280 x 800	1000	Capacitive Touch	Cover Lens Bezel
4DHDMI-90-1280-800-NT-EAR-500	9.0" LCD	1280 x 800	500	Non Touch	Display Tabs
4DHDMI-90-1280-800-NT-EAR-1000	9.0" LCD	1280 x 800	1000	Non Touch	Display Tabs
4DHDMI-90-1280-800-NT-NM-500	9.0" LCD	1280 x 800	500	Non Touch	N/A
4DHDMI-90-1280-800-NT-NM-1000	9.0" LCD	1280 x 800	1000	Non Touch	N/A
4DHDMI-101-1024-600-CT-EAR-500	10.1" LCD	1024 x 600	500	Capacitive Touch	Display Tabs
4DHDMI-101-1024-600-CT-EAR-1000	10.1" LCD	1024 x 600	1000	Capacitive Touch	Display Tabs
4DHDMI-101-1024-600-CT-NM-500	10.1" LCD	1024 x 600	500	Capacitive Touch	N/A
4DHDMI-101-1024-600-CT-NM-1000	10.1" LCD	1024 x 600	1000	Capacitive Touch	N/A
4DHDMI-101-1024-600-CT-CLB-500	10.1" LCD	1024 x 600	500	Capacitive Touch	Cover Lens Bezel
4DHDMI-101-1024-600-CT-CLB-1000	10.1" LCD	1024 x 600	1000	Capacitive Touch	Cover Lens Bezel
4DHDMI-101-1024-600-NT-EAR-500	10.1" LCD	1024 x 600	500	Non Touch	Display Tabs
4DHDMI-101-1024-600-NT-EAR-1000	10.1" LCD	1024 x 600	1000	Non Touch	Display Tabs
4DHDMI-101-1024-600-NT-NM-500	10.1" LCD	1024 x 600	500	Non Touch	N/A
4DHDMI-101-1024-600-NT-NM-1000	10.1" LCD	1024 x 600	1000	Non Touch	N/A

Model Number	Display Size / Type	Resolution	Brightness (cd/m2)	Touch Type	Mounting Type
4DHDMI-101-1280-800-CT-NM-300(L)	10.1" LCD	1280 x 800	300	Capacitive Touch	N/A
4DHDMI-101-1280-800-NT-NM-300(L)	10.1" LCD	1280 x 800	300	Non Touch	N/A
4DHDMI-101-1280-800-CT-EAR-500	10.1" LCD	1280 x 800	500	Capacitive Touch	Display Tabs
4DHDMI-101-1280-800-CT-EAR-1000	10.1" LCD	1280 x 800	1000	Capacitive Touch	Display Tabs
4DHDMI-101-1280-800-CT-NM-500	10.1" LCD	1280 x 800	500	Capacitive Touch	N/A
4DHDMI-101-1280-800-CT-NM-1000	10.1" LCD	1280 x 800	1000	Capacitive Touch	N/A
4DHDMI-101-1280-800-CT-CLB-500	10.1" LCD	1280 x 800	500	Capacitive Touch	Cover Lens Bezel
4DHDMI-101-1280-800-CT-CLB-1000	10.1" LCD	1280 x 800	1000	Capacitive Touch	Cover Lens Bezel
4DHDMI-101-1280-800-NT-EAR-500	10.1" LCD	1280 x 800	500	Non Touch	Display Tabs
4DHDMI-101-1280-800-NT-EAR-1000	10.1" LCD	1280 x 800	1000	Non Touch	Display Tabs
4DHDMI-101-1280-800-NT-NM-500	10.1" LCD	1280 x 800	500	Non Touch	N/A
4DHDMI-101-1280-800-NT-NM-1000	10.1" LCD	1280 x 800	1000	Non Touch	N/A
4DHDMI-101-1920-1200-CT-NM-600	10.1" LCD	1920 x 1200	600	Capacitive Touch	N/A
4DHDMI-101-1920-1200-CT-NM-800	10.1" LCD	1920 x 1200	800	Capacitive Touch	N/A
4DHDMI-101-1920-1200-NT-NM-600	10.1" LCD	1920 x 1200	600	Non Touch	N/A
4DHDMI-101-1920-1200-NT-NM-800	10.1" LCD	1920 x 1200	800	Non Touch	N/A
4DHDMI-121-1280-800-CT-NM-500	12.1" LCD	1280 x 800	500	Capacitive Touch	N/A
4DHDMI-121-1280-800-CT-NM-850	12.1" LCD	1280 x 800	850	Capacitive Touch	N/A
4DHDMI-121-1280-800-CT-EAR-500	12.1" LCD	1280 x 800	500	Capacitive Touch	Display Tabs
4DHDMI-121-1280-800-CT-EAR-850	12.1" LCD	1280 x 800	850	Capacitive Touch	Display Tabs
4DHDMI-121-1280-800-NT-NM-500	12.1" LCD	1280 x 800	500	Non Touch	N/A
4DHDMI-121-1280-800-NT-NM-850	12.1" LCD	1280 x 800	850	Non Touch	N/A
4DHDMI-121-1280-800-NT-EAR-500	12.1" LCD	1280 x 800	500	Non Touch	Display Tabs
4DHDMI-121-1280-800-NT-EAR-850	12.1" LCD	1280 x 800	850	Non Touch	Display Tabs

Model Number	Display Size / Type	Resolution	Brightness (cd/m ²)	Touch Type	Mounting Type
4DHDMI-156-1920-1080-CT-CLB-500	15.6" LCD	1920 x 1080	500	Capacitive Touch	Cover Lens Bezel
4DHDMI-156-1920-1080-CT-CLB-1100	15.6" LCD	1920 x 1080	1100	Capacitive Touch	Cover Lens Bezel
4DHDMI-156-1920-1080-NT-NM-500	15.6" LCD	1920 x 1080	500	Non Touch	N/A
4DHDMI-156-1920-1080-NT-NM-1100	15.6" LCD	1920 x 1080	1100	Non Touch	N/A

 **Note**

1. Display Size, refers to the diagonal dimension of the Active Area of the display, the same way as a TV or computer monitor is defined.
2. Non Touch, means no touch screen is available, it is display output only.
3. Capacitive, means a Capacitive touch screen is available, offering user input from touch.
4. Display Tabs/Ears, mean the display has metal mounting tabs as part of the LCD backlight, which are used for mounting by the customer, using bolts/screws.
5. PCBA Tabs/Ears, mean the PCBA has PCB mounting tabs as part of the circuit board, which are used for mounting by the customer, using bolts/screws.
6. Cover Lens Bezel, means the display has a glass bezel on the front which extends beyond the edges of the LCD size itself. This can be customised for size/shape as required with a custom order, and is used to mount directly to a panel or into a product using adhesive or tape. 3M adhesive is the typical mounting adhesive supplied, however other options are available on request, or simply bare glass so the customers production can apply sealant or similar as required. There is no 'standard' Cover Lens Bezel offered, this must be customised when ordered. Bezel Colour and logos can also be integrated upon request.
7. N/A mounting, means no specific mounting solution is provided, allowing the customer to mount the LCD and circuit board in whatever way suits their application the best. Neither the Display nor the PCBA have mounting tabs, and there is no Cover Lens Bezel.

4. Specific Information

Refer to the **4DHDMI Model Table** for an index to jump to the appropriate model 4DHDMI you are looking for.

4.1. 4DHDMI-34-800-800-CT-CLB-400

- Details Coming Soon...

4.2. 4DHDMI-34-800-800-NT-NM-400

- Details Coming Soon...

4.3. 4DHDMI-40-720-720-CT-CLB-800

- Details Coming Soon...

4.4. 4DHDMI-40-720-720-NT-NM-800

- Details Coming Soon...

4.5. 4DHDMI-43-480-272-CT-EAR-500

- 4.3" Rectangular Display, IPS
- 480 x 272 Resolution
- Capacitive Touch, Glass 1:1 size of LCD. Air Bonded to LCD.
- PCB Mounting Tabs
- 500 cd/m2 brightness, Adjustable via OSD Menu
- Full-size HDMI Display Interface (19-pin), HDMI 1.4
- Mini-HDMI connector (19-pin) for Analog VGA Input Display Interface
- micro-USB Power, and micro-USB Touch Interface. 5V/GND signals are common to both micro-USB connectors, however the Touch interface only goes to the micro-USB associated to Touch.
- 3.5mm TRS Analog Audio Jack for Audio Output, 20Hz-20KHz
- Speaker Interface 4-pin 1.25mm pitch horizontal connector
- Power / Menu / Up / Down / Exit Buttons for OSD Menu

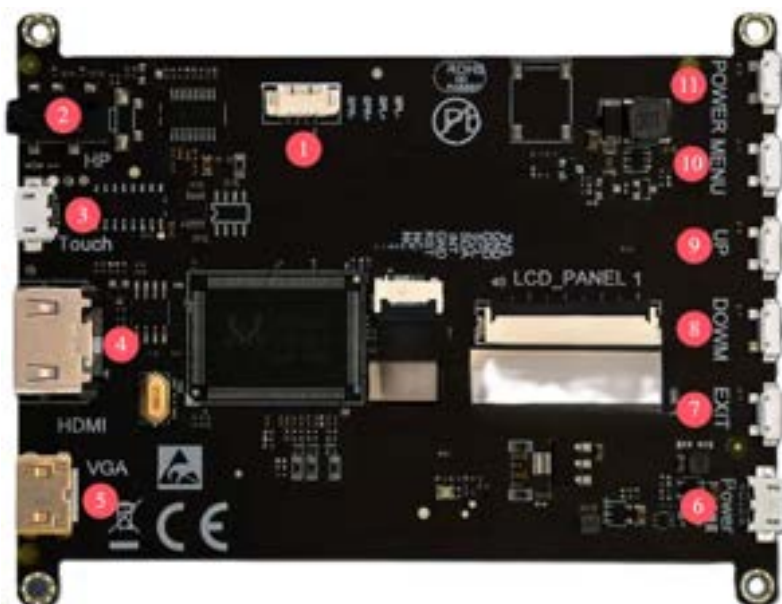
Specifications

Parameter	Symbol	Min	Typical	Max	Unit
Operating Temperature	-	-20	-	+70	°C
Storage Temperature	-	-30	-	+80	°C
LED Life	-	30000	-	-	Hours
Operating Voltage	V	4.8	5.0	5.2	Volts
Operating Current	I	550	590	630	mA
Brightness	-	-	500	-	cd/m2
Contrast Ratio	-	-	800:1	-	-

Product Photo



Product Connections



No.	Function
1	4-pin 1.25mm Speaker Interface
2	3.5mm TRS Audio Output Interface (Headphones/Speaker)
3	5V power & USB touch interface (micro USB)
4	Standard HDMI display interface (19-pin), HDMI 1.4 - See Note 2
5	mini-HDMI Connector for Analog VGA input (19-pin) - See Note 1
6	5V power interface (micro USB)
7	EXIT Button - for OSD Menu
8	DOWN Button - for OSD Menu
9	UP Button - for OSD Menu
10	MENU Button - for OSD Menu
11	POWER Button

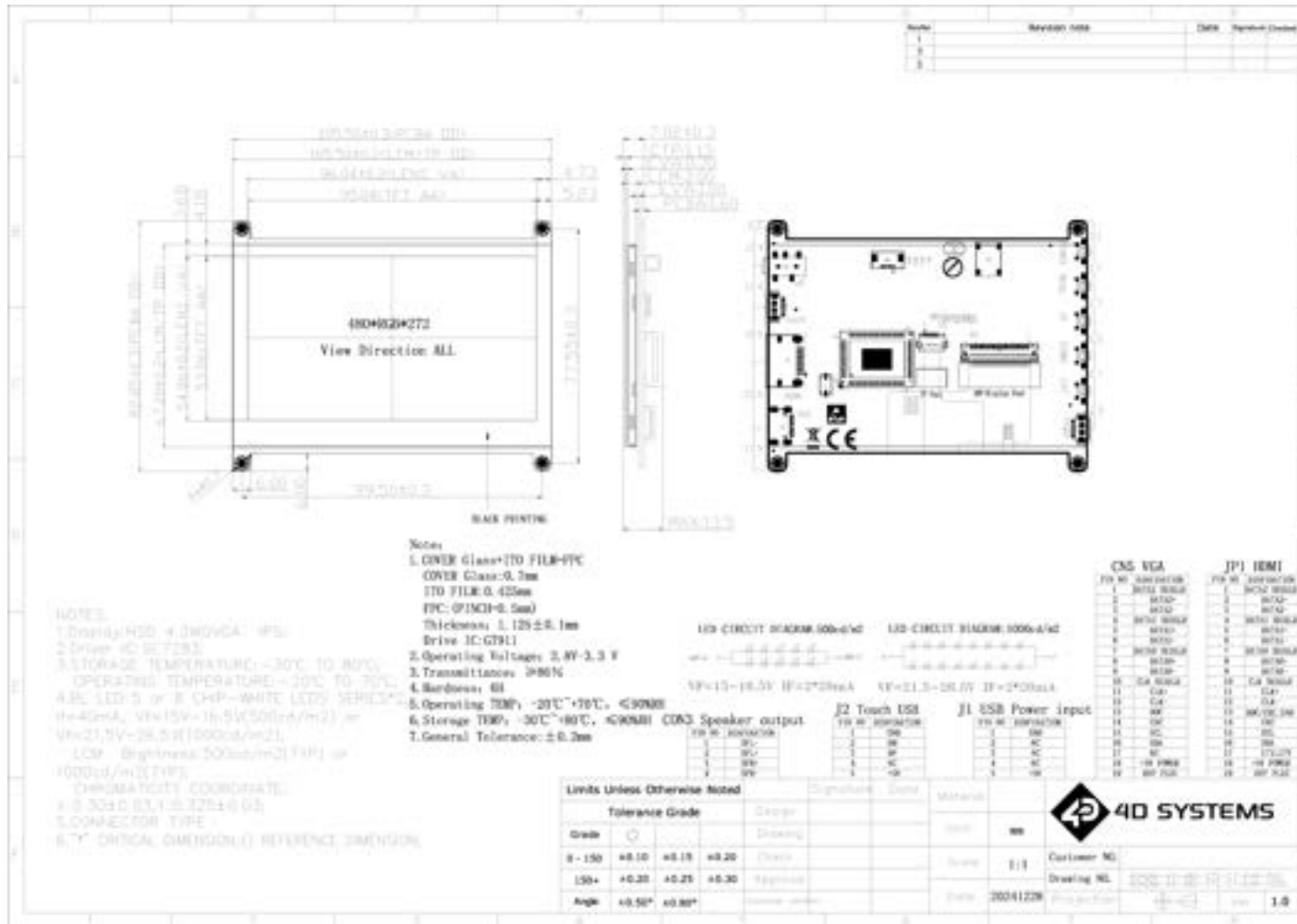
Note 1

- Type: MINI HDMI Connector
- Purpose: Although this is a MINI HDMI connector, it is specifically designed to carry VGA (analog) video signals rather than HDMI (digital) signals.
- Description: A compact connector typically used for HDMI digital interfaces, repurposed here for VGA signal transmission to facilitate compatibility with existing infrastructure or due to space constraints.
- Pin Configuration: 19-pin MINI HDMI connector
- Signal Type: Analog VGA signal
- VGA cable only available on request, not supplied as standard

Note 2

- Type: Standard HDMI Connector
- Version: HDMI 1.4
- Description: Our 4.3-inch display is equipped with a Standard HDMI 1.4 connector for digital video and audio input. This interface allows for a simple and efficient connection to HDMI-enabled devices.
- Pin Configuration: 19-pin Type A connector
- Supported Resolution: Native resolution of 480x282 pixels, with compatibility up to 1080p for video sources
- Color Support: Supports 24-bit color depth for vibrant and clear images
- Cable Type: Standard HDMI cable is recommended for connection, with High-Speed HDMI cable required for optimal performance and to ensure compatibility with the HDMI 1.4 specification

Mechanical Dimensions



[Back to Product Selection](#)

4.6. 4DHDMI-43-480-272-CT-EAR-1000

- Details Coming Soon...

4.7. 4DHDMI-43-480-272-NT-EAR-500

- Details Coming Soon...

4.8. 4DHDMI-43-480-272-NT-EAR-1000

- Details Coming Soon...

4.9. 4DHDMI-43-800-480-CT-EAR-500

- 4.3" Rectangular Display, IPS
- 800 x 480 Resolution
- Capacitive Touch, Glass 1:1 size of LCD. Air Bonded to LCD.
- PCB Mounting Tabs
- 500 cd/m2 brightness, Adjustable via OSD Menu
- Full-size HDMI Display Interface (19-pin), HDMI 1.4
- Mini-HDMI connector (19-pin) for Analog VGA Input Display Interface
- micro-USB Power, and micro-USB Touch Interface. 5V/GND signals are common to both micro-USB connectors, however the Touch interface only goes to the micro-USB associated to Touch.
- 3.5mm TRS Analog Audio Jack for Audio Output, 20Hz-20KHz
- Speaker Interface 4-pin 2.0mm pitch horizontal FFC connector
- Power / Menu / Up / Down / Exit Buttons for OSD Menu

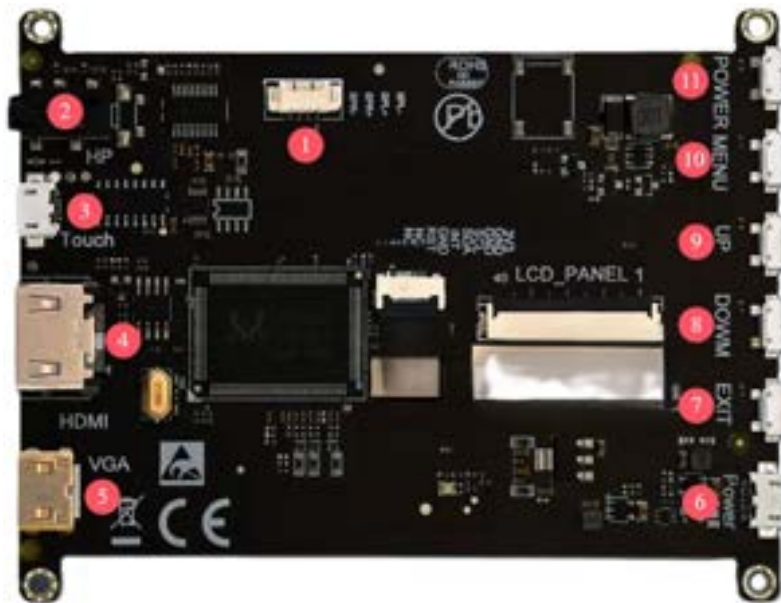
Specifications

Parameter	Symbol	Min	Typical	Max	Unit
Operating Temperature	-	-20	-	+70	°C
Storage Temperature	-	-30	-	+80	°C
LED Life	-	30000	-	-	Hours
Operating Voltage	V	4.8	5.0	5.2	Volts
Operating Current	I	xxx	xxx	xxx	mA
Brightness	-	-	500	-	cd/m2
Contrast Ratio	-	-	1200:1	-	-

Product Photo



Product Connections



No.	Function
1	4-pin 1.25mm Speaker Interface
2	3.5mm TRS Audio Output Interface (Headphones/Speaker)
3	5V power & USB touch interface (micro USB)
4	Standard HDMI display interface (19-pin), HDMI 1.4 - See Note 2
5	mini-HDMI Connector for Analog VGA input (19-pin) - See Note 1
6	5V power interface (micro USB)
7	EXIT Button - for OSD Menu
8	DOWN Button - for OSD Menu
9	UP Button - for OSD Menu
10	MENU Button - for OSD Menu
11	POWER Button

Note 1

- Type: MINI HDMI Connector
- Purpose: Although this is a MINI HDMI connector, it is specifically designed to carry VGA (analog) video signals rather than HDMI (digital) signals.
- Description: A compact connector typically used for HDMI digital interfaces, repurposed here for VGA signal transmission to facilitate compatibility with existing infrastructure or due to space constraints.
- Pin Configuration: 19-pin MINI HDMI connector
- Signal Type: Analog VGA signal
- VGA cable only available on request, not supplied as standard

Note 2

- Type: Standard HDMI Connector
- Version: HDMI 1.4
- Description: Our 4.3-inch display is equipped with a Standard HDMI 1.4 connector for digital video and audio input. This interface allows for a simple and efficient connection to HDMI-enabled devices.
- Pin Configuration: 19-pin Type A connector
- Supported Resolution: Native resolution of 800x480 pixels, with compatibility up to 1080p for video sources
- Color Support: Supports 24-bit color depth for vibrant and clear images
- Cable Type: Standard HDMI cable is recommended for connection, with High-Speed HDMI cable required for optimal performance and to ensure compatibility with the HDMI 1.4 specification

4.10. 4DHDMI-43-800-480-CT-EAR-1000

- Details Coming Soon...

4.11. 4DHDMI-43-800-480-NT-EAR-500

- Details Coming Soon...

4.12. 4DHDMI-43-800-480-NT-EAR-1000

- Details Coming Soon...

4.13. 4DHDMI-50-800-480-CT-EAR-500

- 5.0" Rectangular Display, IPS
- 800 x 480 Resolution
- Capacitive Touch, Glass 1:1 size of LCD. Air Bonded to LCD.
- PCB Mounting Tabs
- 500 cd/m2 brightness, Adjustable via OSD Menu
- Full-size HDMI Display Interface (19-pin), HDMI 1.4
- Mini-HDMI connector (19-pin) for Analog VGA Input Display Interface
- micro-USB Power, and micro-USB Touch Interface. 5V/GND signals are common to both micro-USB connectors, however the Touch interface only goes to the micro-USB associated to Touch.
- 3.5mm TRS Analog Audio Jack for Audio Output, 20Hz-20KHz
- Speaker Interface 4-pin 2.0mm pitch horizontal FFC connector
- Power / Menu / Up / Down / Exit Buttons for OSD Menu

Specifications

Parameter	Symbol	Min	Typical	Max	Unit
Operating Temperature	-	-20	-	+70	°C
Storage Temperature	-	-30	-	+80	°C
LED Life	-	30000	-	-	Hours
Operating Voltage	V	4.8	5.0	5.2	Volts
Operating Current	I	-	850	-	mA
Brightness	-	-	500	-	cd/m2
Contrast Ratio	-	-	1000:1	-	-

Product Photo



Product Connections



No.	Function
1	mini-HDMI Connector for Analog VGA input (19-pin) - See Note 1
2	Standard HDMI display interface (19-pin), HDMI 1.4 - See Note 2
3	5V power & USB touch interface (micro USB)
4	3.5mm TRS Audio Output Interface (Headphones/Speaker)
5	Speaker Interface 4-pin 2.0mm
6	POWER Button
7	MENU Button - for OSD Menu
8	UP Button - for OSD Menu
9	DOWN Button - for OSD Menu
10	EXIT Button - for OSD Menu
11	5V power interface (micro USB)

Note 1

- Type: MINI HDMI Connector
- Purpose: Although this is a MINI HDMI connector, it is specifically designed to carry VGA (analog) video signals rather than HDMI (digital) signals.
- Description: A compact connector typically used for HDMI digital interfaces, repurposed here for VGA signal transmission to facilitate compatibility with existing infrastructure or due to space constraints.
- Pin Configuration: 19-pin MINI HDMI connector
- Signal Type: Analog VGA signal
- VGA cable only available on request, not supplied as standard

Note 2

- Type: Standard HDMI Connector
- Version: HDMI 1.4
- Description: Our 5-inch display is equipped with a Standard HDMI 1.4 connector for digital video and audio input. This interface allows for a simple and efficient connection to HDMI-enabled devices.
- Pin Configuration: 19-pin Type A connector
- Supported Resolution: Native resolution of 800x480 pixels, with compatibility up to 1080p for video sources
- Color Support: Supports 24-bit color depth for vibrant and clear images
- Cable Type: Standard HDMI cable is recommended for connection, with High-Speed HDMI cable required for optimal performance and to ensure compatibility with the HDMI 1.4 specification

4.14. 4DHDMI-50-800-480-CT-EAR-1000

- Details Coming Soon...

4.15. 4DHDMI-50-800-480-NT-EAR-500

- Details Coming Soon...

4.16. 4DHDMI-50-800-480-NT-EAR-1000

- Details Coming Soon...

4.17. 4DHDMI-54-1080-1920-CT-NM-400

- 5.48" Rectangular Display, AMOLED
- 1080 x 1920 Resolution, Full HD
- Very high 100000:1 contrast ratio
- Capacitive Touch, AMOLED Glass and Touch are a single piece
- No Mounting Solution, bare display only
- 400 cd/m2 brightness, Adjustable via OSD Menu
- Mini HDMI Display Interface (19-pin), HDMI 1.4
- USB-C Power and Touch Interface.
- 4-pin 1.0mm horizontal connector for Audio Output, 20Hz-20KHz
- 8-pin 1.0mm horizontal connector for Keypad

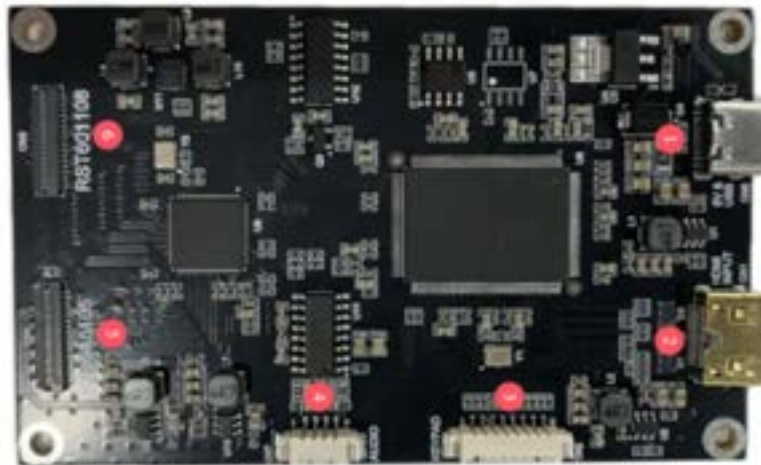
Specifications

Parameter	Symbol	Min	Typical	Max	Unit
Operating Temperature	-	-20	-	+70	°C
Storage Temperature	-	-30	-	+80	°C
Display Life	-	50000	-	-	Hours
Operating Voltage	V	4.8	5.0	5.2	Volts
Operating Current	I	-	660	-	mA
Brightness	-	-	400	-	cd/m2
Contrast Ratio	-	-	100000:1	-	-

Product Photo



Product Connections



No.	Function
1	5V power & USB touch interface (USB-C)
2	mini-HDMI display interface (19-pin), HDMI 1.4 - See Note 1
3	Keypad Interface 8-pin 1.0mm Horizontal Connector
4	Audio Output Interface 4-pin 1.0mm Horizontal Connector (Headphones/Speaker)
5	Display Interface
6	N/A for this model display

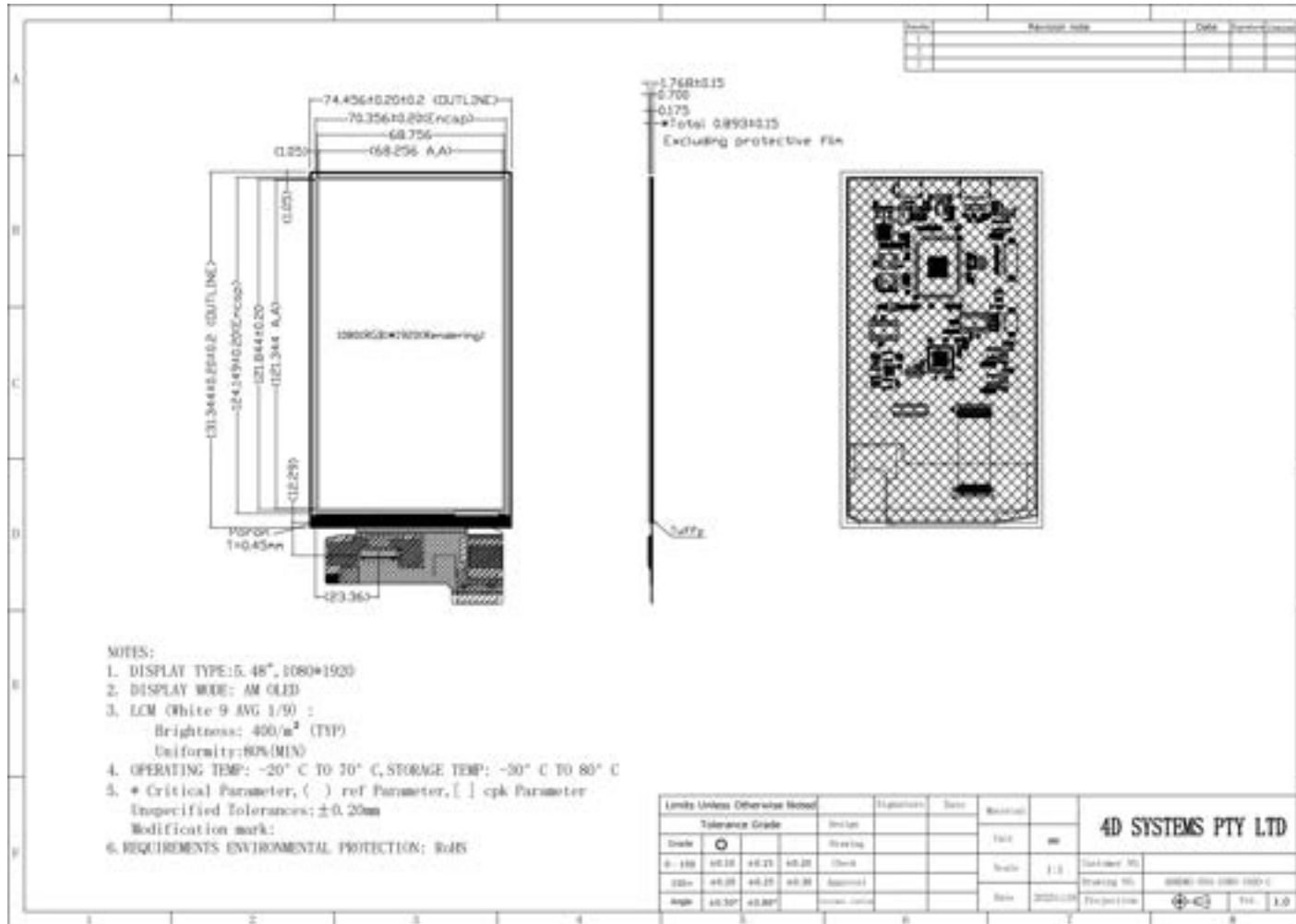
Note 1

- Type: Mini HDMI Connector
- Version: HDMI 1.4
- Description: Our AMOLED display is equipped with a Standard HDMI 1.4 connector for digital video and audio input. This interface allows for a simple and efficient connection to HDMI-enabled devices.
- Pin Configuration: 19-pin Type A connector
- Supported Resolution: Native resolution of 800x480 pixels, with compatibility up to 1080p for video sources
- Color Support: Supports 24-bit color depth for vibrant and clear images
- Cable Type: Standard HDMI cable is recommended for connection, with High-Speed HDMI cable required for optimal performance and to ensure compatibility with the HDMI 1.4 specification

Button Board Connections

No.	Function
1	Interface to product board 10-pin 2.0mm
2	Menu Button - OSD Menu
3	Down Button - OSD Menu
4	Up Button - OSD Menu
5	Enter Button - OSD Menu
6	Power Button

Mechanical Dimensions



[Back to Product Selection](#)

4.18. 4DHDMI-60-1080-2160-CT-NM-600

- 6.01" Rectangular Display, AMOLED
- 1080 x 2160 Resolution, 18:9 Aspect Ratio
- Very high 100000:1 contrast ratio
- Capacitive Touch, AMOLED Glass and Touch are a single piece
- No Mounting Solution, bare display only
- 600 cd/m2 brightness, Adjustable via OSD Menu
- Mini HDMI Display Interface (19-pin), HDMI 1.4
- USB-C Power and Touch Interface.
- 4-pin 1.0mm horizontal connector for Audio Output, 20Hz-20KHz
- 8-pin 1.0mm horizontal connector for Keypad

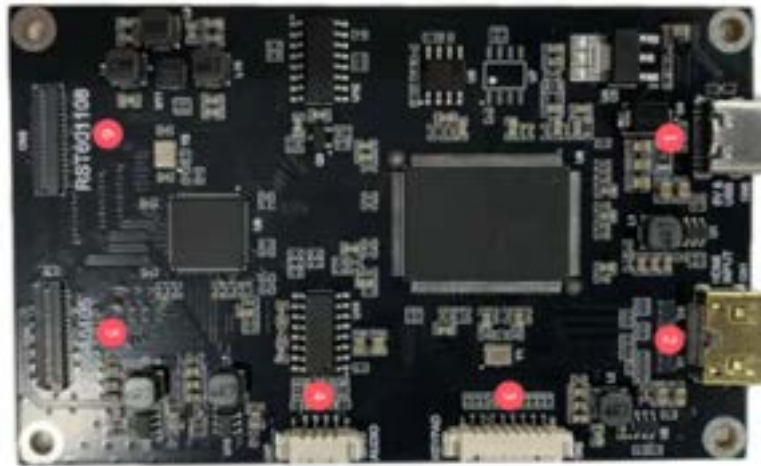
Specifications

Parameter	Symbol	Min	Typical	Max	Unit
Operating Temperature	-	-20	-	+70	°C
Storage Temperature	-	-30	-	+80	°C
Display Life	-	50000	-	-	Hours
Operating Voltage	V	4.8	5.0	5.2	Volts
Operating Current	I	-	470	-	mA
Brightness	-	-	600	-	cd/m2
Contrast Ratio	-	-	100000:1	-	-

Product Photo



Product Connections



No.	Function
1	5V power & USB touch interface (USB-C)
2	mini-HDMI display interface (19-pin), HDMI 1.4 - See Note 1
3	Keypad Interface 8-pin 1.0mm Horizontal Connector
4	Audio Output Interface 4-pin 1.0mm Horizontal Connector (Headphones/Speaker)
5	N/A for this model display
6	Display Interface

Note 1

- Type: Mini HDMI Connector
- Version: HDMI 1.4
- Description: Our AMOLED display is equipped with a Standard HDMI 1.4 connector for digital video and audio input. This interface allows for a simple and efficient connection to HDMI-enabled devices.
- Pin Configuration: 19-pin Type A connector
- Supported Resolution: Native resolution of 800x480 pixels, with compatibility up to 1080p for video sources
- Color Support: Supports 24-bit color depth for vibrant and clear images
- Cable Type: Standard HDMI cable is recommended for connection, with High-Speed HDMI cable required for optimal performance and to ensure compatibility with the HDMI 1.4 specification

Button Board Connections

No.	Function
1	Interface to product board 10-pin 2.0mm
2	Menu Button - OSD Menu
3	Down Button - OSD Menu
4	Up Button - OSD Menu
5	Enter Button - OSD Menu
6	Power Button

4.19. 4DHDMI-70-800-480-CT-EAR-500

- 7.0" Rectangular Display, TN
- 800 x 480 Resolution
- Capacitive Touch, Glass 1:1 size of LCD. Air Bonded to LCD.
- PCB Mounting Tabs
- 500 cd/m2 brightness, Adjustable via OSD Menu
- Full-size HDMI Display Interface (19-pin), HDMI 1.4
- Mini-HDMI connector (19-pin) for Analog VGA Input Display Interface
- micro-USB Power, and micro-USB Touch Interface. 5V/GND signals are common to both micro-USB connectors, however the Touch interface only goes to the micro-USB associated to Touch
- 3.5mm TRS Analog Audio Jack for Audio Output, 20Hz-20KHz
- Speaker Interface 4-pin 2.0mm pitch horizontal FFC connector
- Power / Menu / Up / Down / Exit Buttons for OSD Menu

Specifications

Parameter	Symbol	Min	Typical	Max	Unit
Operating Temperature	-	-20	-	+70	°C
Storage Temperature	-	-30	-	+80	°C
LED Life	-	30000	-	-	Hours
Operating Voltage	V	4.8	5.0	5.2	Volts
Operating Current	I	-	780	-	mA
Brightness	-	-	500	-	cd/m2
Contrast Ratio	-	-	500:1	-	-

Product Photo



Product Connections



No.	Function
1	Standard HDMI display interface (19-pin), HDMI 1.4 - See Note 2
2	5V power & USB touch interface (micro USB)
3	5V power interface (micro USB)
4	3.5mm TRS Audio Output Interface (Headphones/Speaker)
5	mini-HDMI Connector for Analog VGA input (19-pin) - See Note 1
6	Speaker Interface - 4-pin 2.0mm
7	EXIT Button - for OSD Menu
8	DOWN Button - for OSD Menu
9	UP Button - for OSD Menu
10	MENU Button - for OSD Menu
11	POWER Button

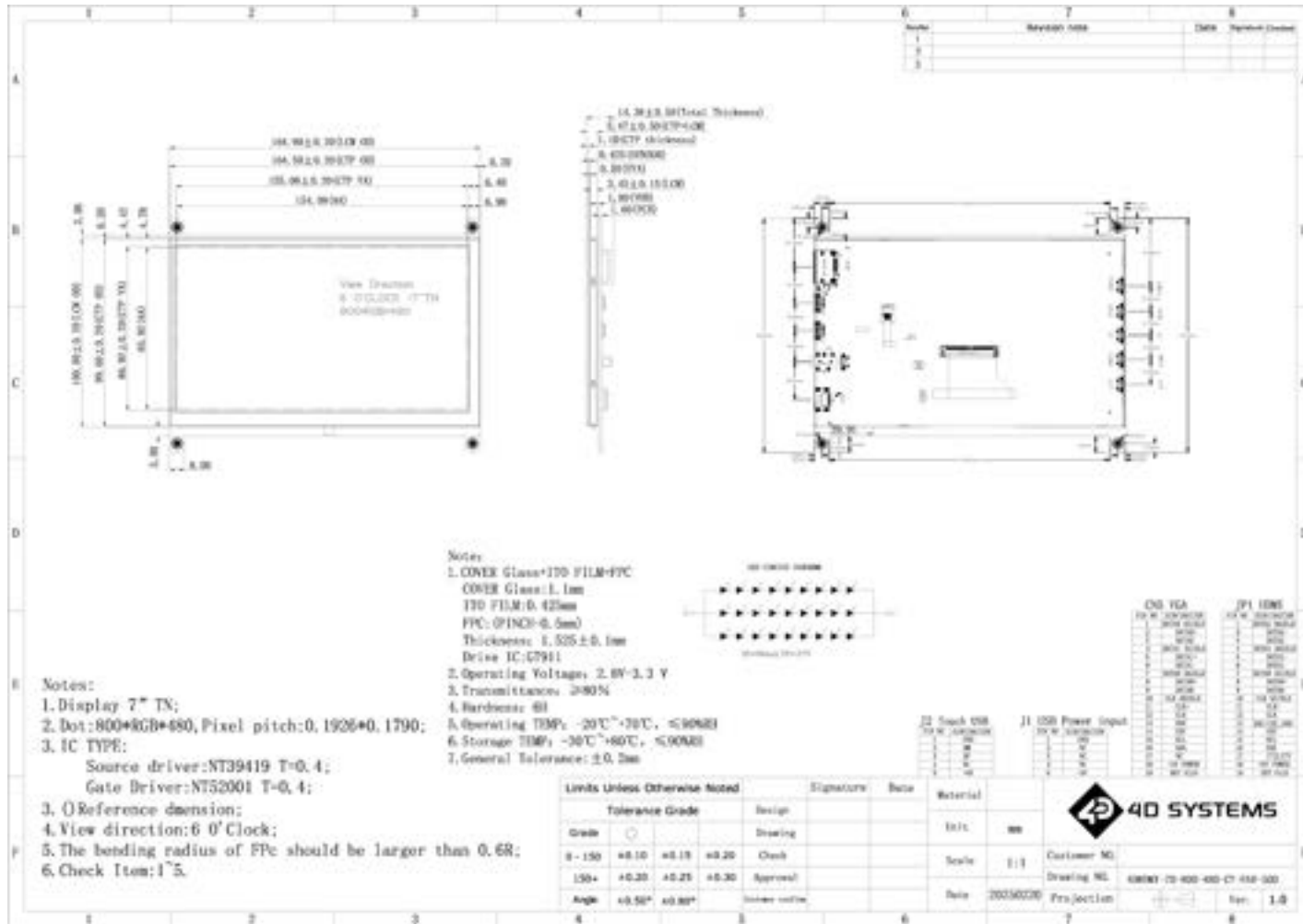
Note 1

- Type: MINI HDMI Connector
- Purpose: Although this is a MINI HDMI connector, it is specifically designed to carry VGA (analog) video signals rather than HDMI (digital) signals.
- Description: A compact connector typically used for HDMI digital interfaces, repurposed here for VGA signal transmission to facilitate compatibility with existing infrastructure or due to space constraints.
- Pin Configuration: 19-pin MINI HDMI connector
- Signal Type: Analog VGA signal
- VGA cable only available on request, not supplied as standard

Note 2

- Type: Standard HDMI Connector
- Version: HDMI 1.4
- Description: Our 7.0-inch display is equipped with a Standard HDMI 1.4 connector for digital video and audio input. This interface allows for a simple and efficient connection to HDMI-enabled devices.
- Pin Configuration: 19-pin Type A connector
- Supported Resolution: Native resolution of 800x480 pixels, with compatibility up to 1080p for video sources
- Color Support: Supports 24-bit color depth for vibrant and clear images
- Cable Type: Standard HDMI cable is recommended for connection, with High-Speed HDMI cable required for optimal performance and to ensure compatibility with the HDMI 1.4 specification

Mechanical Dimensions



[Back to Product Selection](#)

4.20. 4DHDMI-70-800-480-NT-EAR-500

- Details Coming Soon...

4.21. 4DHDMI-70-1024-600-CT-EAR-500

- 7.0" Rectangular Display, IPS
- 1024 x 600 Resolution
- Capacitive Touch, Glass 1:1 size of LCD. Optical Bonded to LCD.
- LCD Metal Mounting Tabs
- 500 cd/m2 brightness, Adjustable via push button on main PCBA
- Mini-HDMI Display Interface (19-pin), HDMI 1.4
- USB-C Power, and USB-C Touch Interface. 5V/GND signals are common to both micro-USB connectors, however the Touch interface only goes to the micro-USB associated to Touch

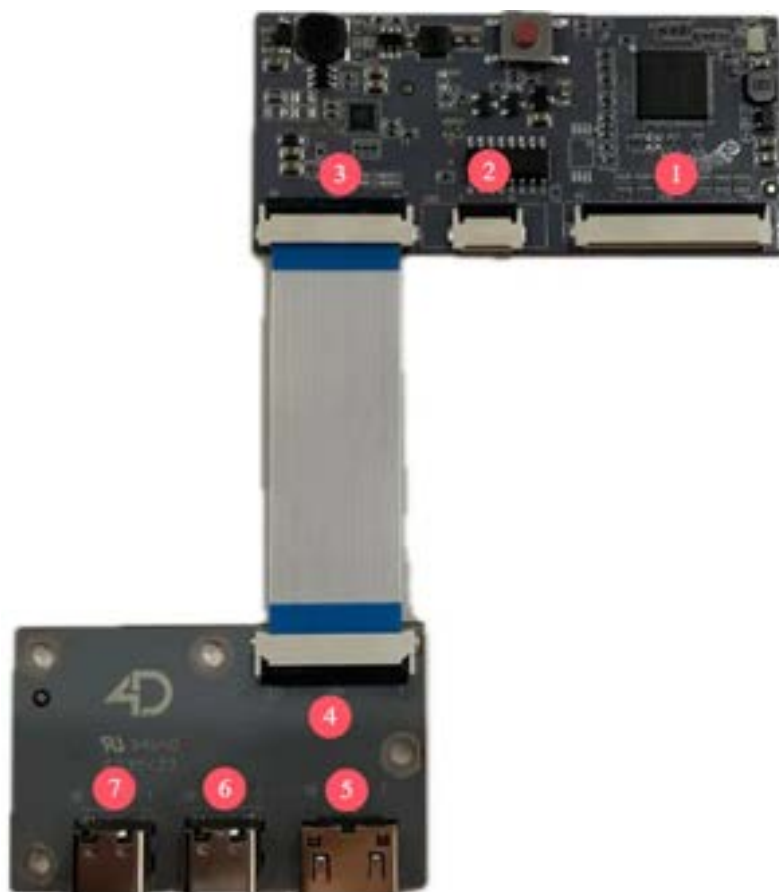
Specifications

Parameter	Symbol	Min	Typical	Max	Unit
Operating Temperature	-	-20	-	+70	°C
Storage Temperature	-	-30	-	+80	°C
LED Life	-	30000	-	-	Hours
Operating Voltage	V	4.8	5.0	5.2	Volts
Operating Current	I	-	430	-	mA
Brightness	-	-	500	-	cd/m2
Contrast Ratio	-	-	800:1	-	-

Product Photo



Product Connections

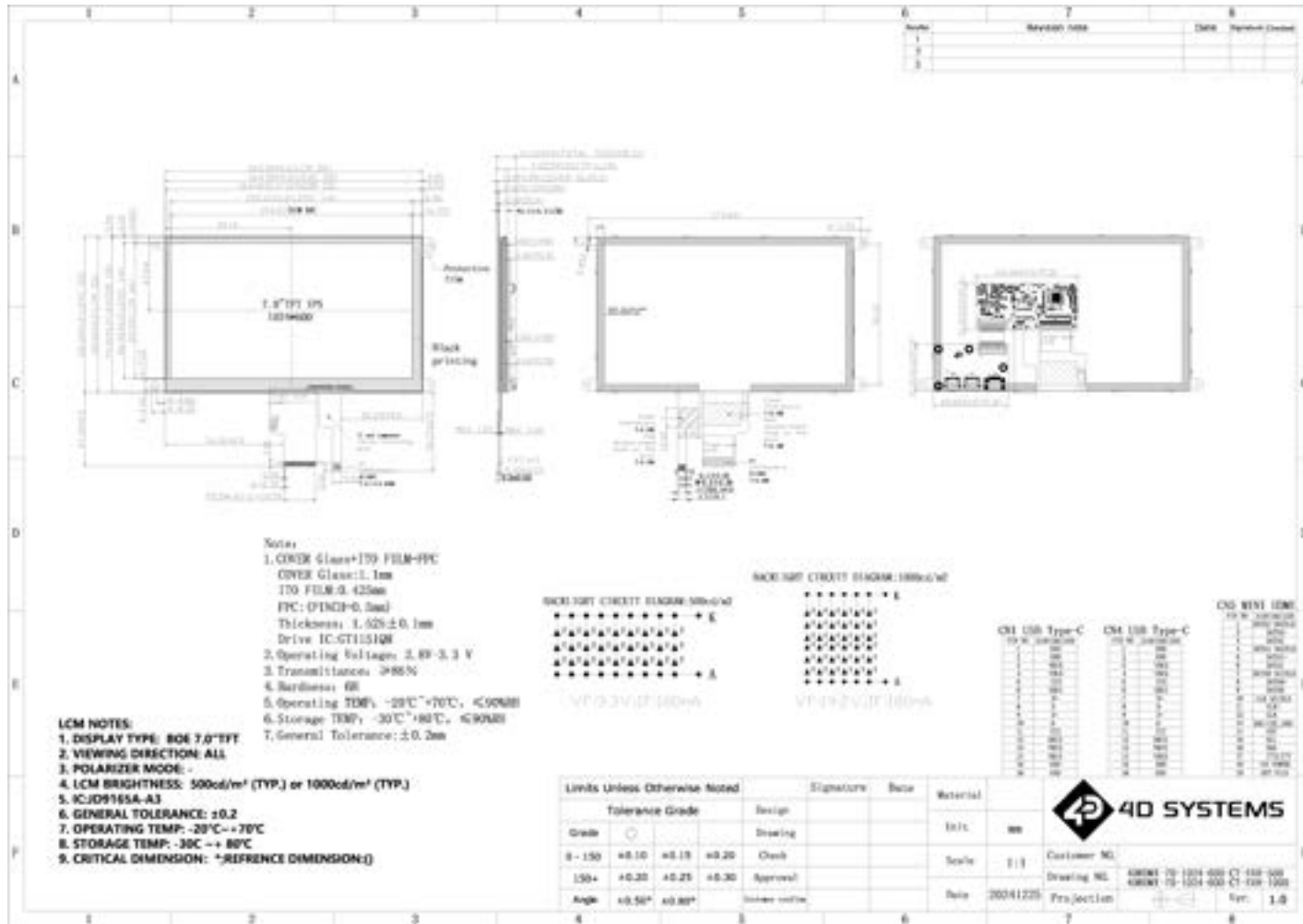


No.	Function
1	40-pin LCD Display interface
2	10-pin LCD Display Touch interface
3	30-pin Board-Board Interface
4	30-pin Board-Board Interface
5	Mini-HDMI display interface (19-pin), HDMI 1.4 - See Note 1
6	5V power & USB touch interface (Standard 16Pin Type-C)
7	5V power & USB touch interface (Standard 16Pin Type-C)

Note 1

- Type: Mini HDMI Connector
- Version: HDMI 1.4
- Description: Our 7.0-inch display is equipped with a Mini HDMI 1.4 connector for digital video and audio input. This interface allows for a simple and efficient connection to HDMI-enabled devices.
- Pin Configuration: 19-pin Mini HDMI connector
- Color Support: Supports 24-bit color depth for vibrant and clear images
- Cable Type: Standard HDMI cable is recommended for connection, with High-Speed HDMI cable required for optimal performance and to ensure compatibility with the HDMI 1.4 specification

Mechanical Dimensions



[Back to Product Selection](#)

4.22. 4DHDMI-70-1024-600-CT-EAR-1000

- 7.0" Rectangular Display, IPS
- 1024 x 600 Resolution
- Capacitive Touch, Glass 1:1 size of LCD. Optical Bonded to LCD.
- LCD Metal Mounting Tabs
- 1000 cd/m2 brightness, Adjustable via push button on main PCBA
- Mini-HDMI Display Interface (19-pin), HDMI 1.4
- USB-C Power, and USB-C Touch Interface. 5V/GND signals are common to both miro-USB connectors, however the Touch interface only goes to the micro-USB associated to Touch

Specifications

Parameter	Symbol	Min	Typical	Max	Unit
Operating Temperature	-	-20	-	+70	°C
Storage Temperature	-	-30	-	+80	°C
LED Life	-	30000	-	-	Hours
Operating Voltage	V	4.8	5.0	5.2	Volts
Operating Current	I	-	790	-	mA
Brightness	-	-	1000	-	cd/m2
Contrast Ratio	-	-	800:1	-	-

Product Photo



Product Connections

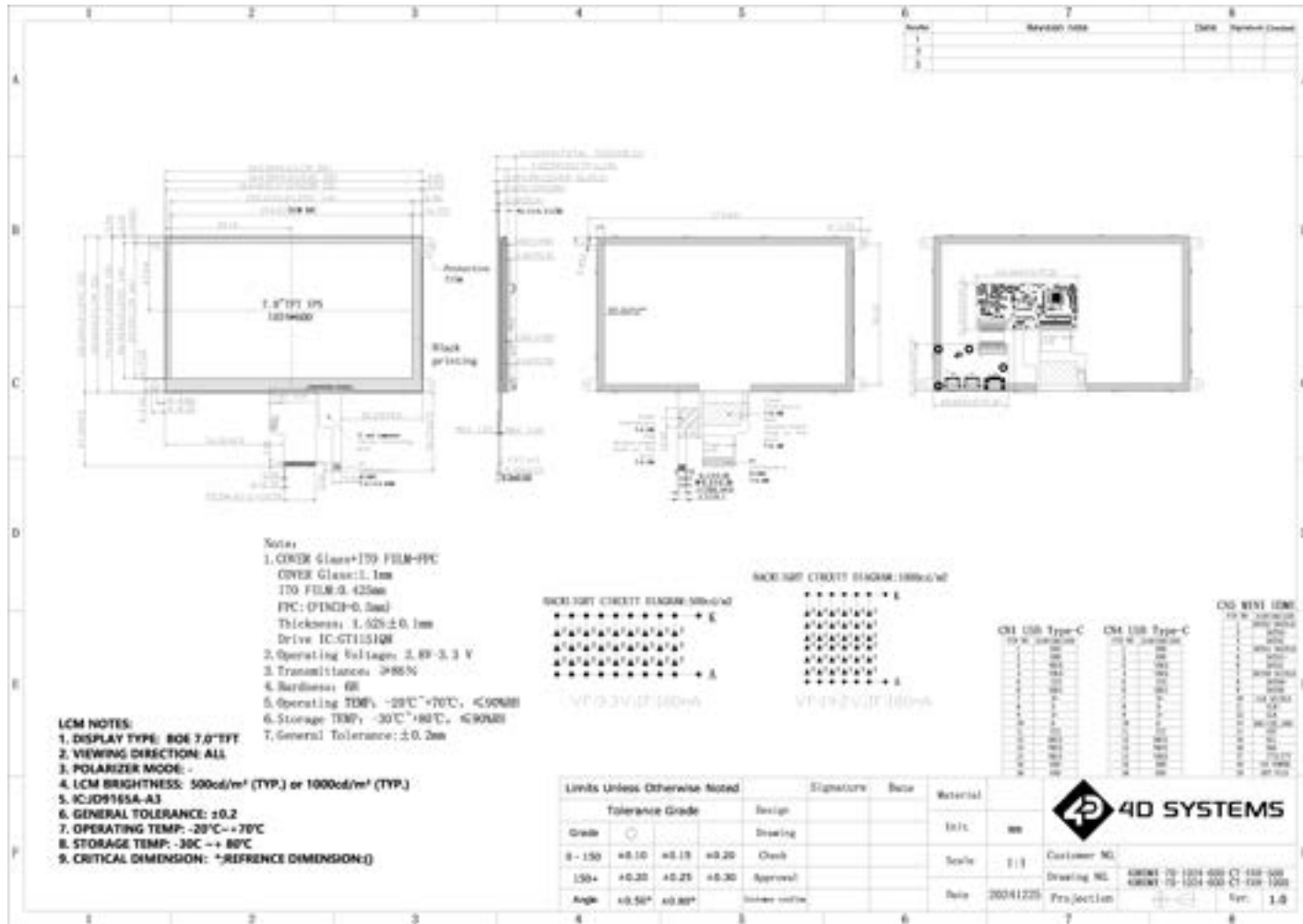


No.	Function
1	40-pin LCD Display interface
2	10-pin LCD Display Touch interface
3	30-pin Board-Board Interface
4	30-pin Board-Board Interface
5	Mini-HDMI display interface (19-pin), HDMI 1.4 - See Note 1
6	5V power & USB touch interface (Standard 16Pin Type-C)
7	5V power & USB touch interface (Standard 16Pin Type-C)

Note 1

- Type: Mini HDMI Connector
- Version: HDMI 1.4
- Description: Our 7.0-inch display is equipped with a Mini HDMI 1.4 connector for digital video and audio input. This interface allows for a simple and efficient connection to HDMI-enabled devices.
- Pin Configuration: 19-pin Mini HDMI connector
- Color Support: Supports 24-bit color depth for vibrant and clear images
- Cable Type: Standard HDMI cable is recommended for connection, with High-Speed HDMI cable required for optimal performance and to ensure compatibility with the HDMI 1.4 specification

Mechanical Dimensions



[Back to Product Selection](#)

4.23. 4DHDMI-70-1024-600-NT-EAR-500

- Details Coming Soon...

4.24. 4DHDMI-70-1024-600-NT-EAR-1000

- Details Coming Soon...

4.25. 4DHDMI-70-1280-800-CT-EAR-500

- 7.0" Rectangular Display, IPS
- 1280 x 800 Resolution
- Capacitive Touch, Glass 1:1 size of LCD. Optical Bonded to LCD.
- LCD Metal Mounting Tabs
- 500 cd/m2 brightness, Adjustable via OSD Menu
- Supports DDC
- Mini-HDMI Display Interface (19-pin), HDMI 1.4
- USB-C Power and Touch Interface
- 12V Power Input 5.5mm barrel Jack
- 3.5mm TRS Analog Audio Jack for Audio Output, 20Hz-20KHz
- Speaker Interface 4-pin 2.0mm pitch horizontal connector, 4ohm 3W Stereo
- Button Interface port for OSD, for external button board (available on request)

Specifications

Parameter	Symbol	Min	Typical	Max	Unit
Operating Temperature	-	-20	-	+70	°C
Storage Temperature	-	-30	-	+80	°C
LED Life	-	30000	-	-	Hours
Operating Voltage (USB)	V	4.8	5.0	5.2	Volts DC
Operating Current (USB)	I	-	1300	-	mA
Operating Voltage (Barrel)	V _{in}	-	12.0	-	Volts DC
Operating Current (Barrel)	I _{in}	-	540	-	mA
Brightness	-	-	500	-	cd/m2
Contrast Ratio	-	-	800:1	-	-

Product Photo



Product Connections



No.	Function
1	LCD Display interface
2	LCD Display Touch interface
3	12V barrel jack power input 5.5mm (Centre +)
4	Reserved interface
5	5V power & USB touch interface (Standard 16-pin Type-C)
6	Reserved interface
7	Mini-HDMI display interface (19-pin), HDMI 1.4 - See Note 1
8	3.5mm TRS Analog Audio Output
9	Reserved interface
10	Button board interface for OSD Menu 10-pin 2.0mm
11	Reserved interface
12	Speaker interface 4-pin 1.25mm
13	Reserved interface

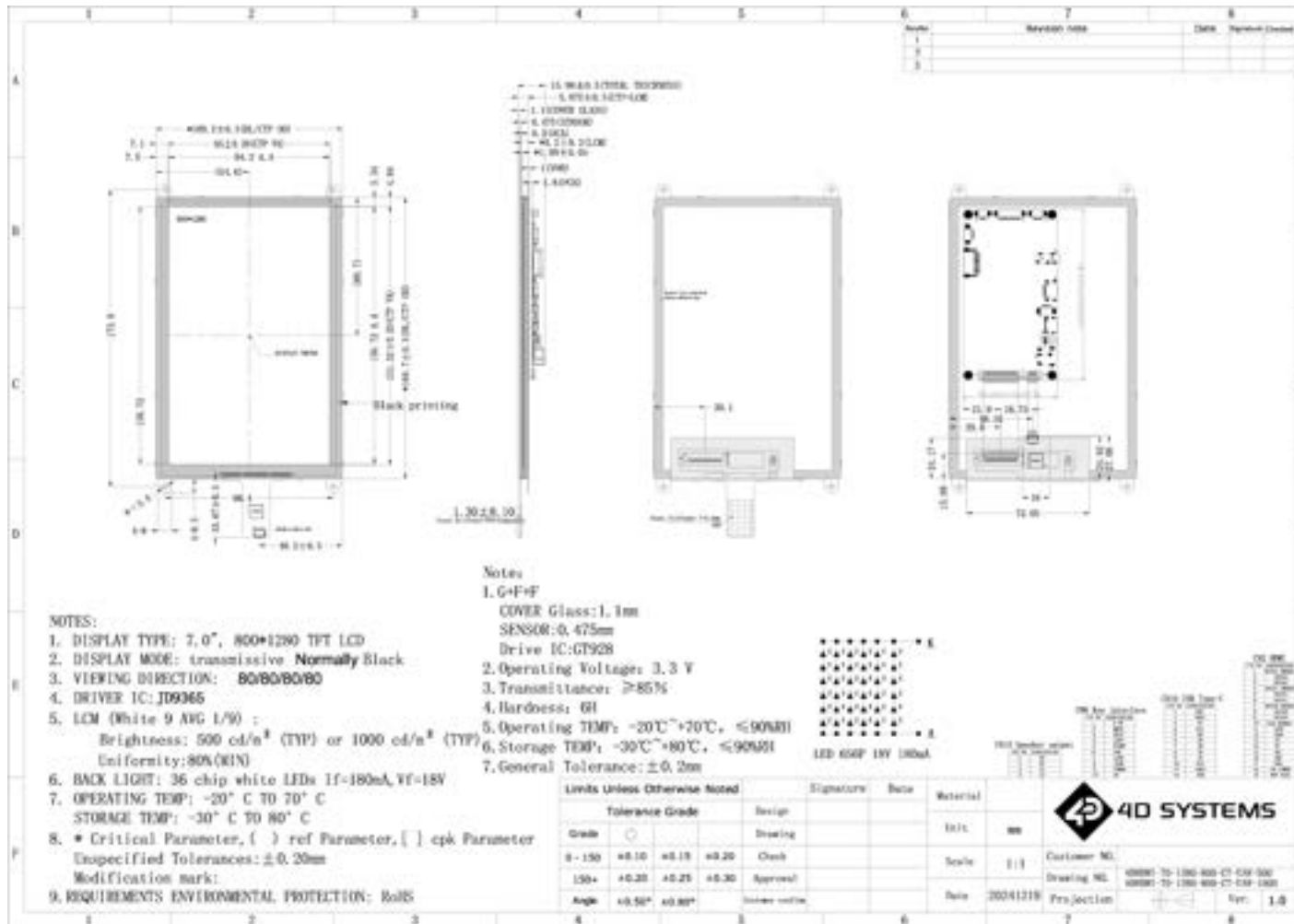
Note 1

- Type: Mini HDMI Connector
- Version: HDMI 1.4
- Description: Our 7.0-inch display is equipped with a Mini HDMI 1.4 connector for digital video and audio input. This interface allows for a simple and efficient connection to HDMI-enabled devices.
- Pin Configuration: 19-pin Mini HDMI connector
- Color Support: Supports 24-bit color depth for vibrant and clear images
- Cable Type: Standard HDMI cable is recommended for connection, with High-Speed HDMI cable required for optimal performance and to ensure compatibility with the HDMI 1.4 specification

Button Board Connections

No.	Function
1	Interface to product board 10-pin 2.0mm
2	Menu Button - OSD Menu
3	Down Button - OSD Menu
4	Up Button - OSD Menu
5	Enter Button - OSD Menu
6	Power Button

Mechanical Dimensions



[Back to Product Selection](#)

4.26. 4DHDMI-70-1280-800-CT-EAR-1000

- 7.0" Rectangular Display, IPS
- 1280 x 800 Resolution
- Capacitive Touch, Glass 1:1 size of LCD. Optical Bonded to LCD.
- LCD Metal Mounting Tabs
- 1000 cd/m2 brightness, Adjustable via OSD Menu
- Supports DDC
- Mini-HDMI Display Interface (19-pin), HDMI 1.4
- USB-C Power and Touch Interface
- 12V Power Input 5.5mm barrel Jack
- 3.5mm TRS Analog Audio Jack for Audio Output, 20Hz-20KHz
- Speaker Interface 4-pin 2.0mm pitch horizontal connector, 4ohm 3W Stereo
- Button Interface port for OSD, for external button board (available on request)

Specifications

Parameter	Symbol	Min	Typical	Max	Unit
Operating Temperature	-	-20	-	+70	°C
Storage Temperature	-	-30	-	+80	°C
LED Life	-	30000	-	-	Hours
Operating Voltage (USB)	V	4.8	5.0	5.2	Volts DC
Operating Current (USB)	I	-	1300	-	mA
Operating Voltage (Barrel)	V _{in}	-	12.0	-	Volts DC
Operating Current (Barrel)	I _{in}	-	540	-	mA
Brightness	-	-	1000	-	cd/m2
Contrast Ratio	-	-	800:1	-	-

Product Photo



Product Connections



No.	Function
1	LCD Display interface
2	LCD Display Touch interface
3	12V barrel jack power input 5.5mm (Centre +)
4	Reserved interface
5	5V power & USB touch interface (Standard 16-pin Type-C)
6	Reserved interface
7	Mini-HDMI display interface (19-pin), HDMI 1.4 - See Note 1
8	3.5mm TRS Analog Audio Output
9	Reserved interface
10	Button board interface for OSD Menu 10-pin 2.0mm
11	Reserved interface
12	Speaker interface 4-pin 1.25mm
13	Reserved interface

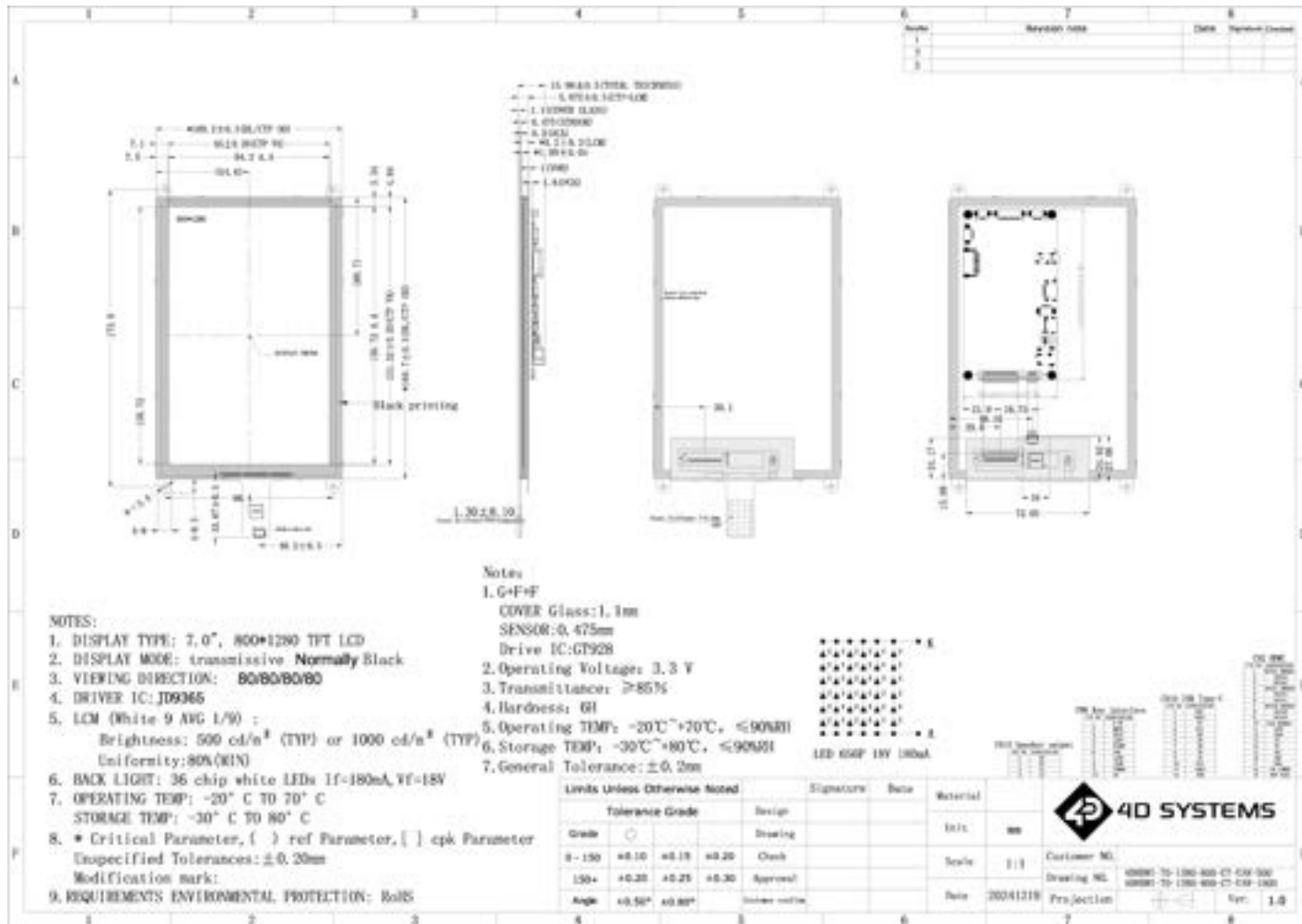
Note 1

- Type: Mini HDMI Connector
- Version: HDMI 1.4
- Description: Our 7.0-inch display is equipped with a Mini HDMI 1.4 connector for digital video and audio input. This interface allows for a simple and efficient connection to HDMI-enabled devices.
- Pin Configuration: 19-pin Mini HDMI connector
- Color Support: Supports 24-bit color depth for vibrant and clear images
- Cable Type: Standard HDMI cable is recommended for connection, with High-Speed HDMI cable required for optimal performance and to ensure compatibility with the HDMI 1.4 specification

Button Board Connections

No.	Function
1	Interface to product board 10-pin 2.0mm
2	Menu Button - OSD Menu
3	Down Button - OSD Menu
4	Up Button - OSD Menu
5	Enter Button - OSD Menu
6	Power Button

Mechanical Dimensions



[Back to Product Selection](#)

4.27. 4DHDMI-70-1280-800-NT-EAR-500

- Details Coming Soon...

4.28. 4DHDMI-70-1280-800-NT-EAR-1000

- Details Coming Soon...

4.29. 4DHDMI-80-1280-800-CT-EAR-500

- 8.0" Rectangular Display, IPS
- 1280 x 800 Resolution
- Capacitive Touch, Glass 1:1 size of LCD. Optical Bonded to LCD.
- LCD Metal Mounting Tabs
- 500 cd/m2 brightness, Adjustable via OSD Menu
- Supports DDC
- Mini-HDMI Display Interface (19-pin), HDMI 1.4
- USB-C Power and Touch Interface
- 12V Power Input 5.5mm barrel Jack
- 3.5mm TRS Analog Audio Jack for Audio Output, 20Hz-20KHz
- Speaker Interface 4-pin 2.0mm pitch horizontal connector, 4ohm 3W Stereo
- Button Interface port for OSD, for external button board (available on request)

Specifications

Parameter	Symbol	Min	Typical	Max	Unit
Operating Temperature	-	-20	-	+70	°C
Storage Temperature	-	-30	-	+80	°C
LED Life	-	30000	-	-	Hours
Operating Voltage (USB)	V	4.8	5.0	5.2	Volts DC
Operating Current (USB)	I	-	TBA	-	mA
Operating Voltage (Barrel)	V _{in}	-	12.0	-	Volts DC
Operating Current (Barrel)	I _{in}	-	TBA	-	mA
Brightness	-	-	500	-	cd/m2
Contrast Ratio	-	-	1500:1	-	-

Product Photo



Product Connections



No.	Function
1	LCD Display interface
2	LCD Display Touch interface
3	12V barrel jack power input 5.5mm (Centre +)
4	Reserved interface
5	5V power & USB touch interface (Standard 16-pin Type-C)
6	Reserved interface
7	Mini-HDMI display interface (19-pin), HDMI 1.4 - See Note 1
8	3.5mm Analog Audio Output
9	Reserved interface
10	Button board interface for OSD Menu
11	Reserved interface
12	Speaker interface 4pin 1.25mm
13	Reserved interface

Note 1

- Type: Mini HDMI Connector
- Version: HDMI 1.4
- Description: Our 8.0-inch display is equipped with a Mini HDMI 1.4 connector for digital video and audio input. This interface allows for a simple and efficient connection to HDMI-enabled devices.
- Pin Configuration: 19-pin Mini HDMI connector
- Color Support: Supports 24-bit color depth for vibrant and clear images
- Cable Type: Standard HDMI cable is recommended for connection, with High-Speed HDMI cable required for optimal performance and to ensure compatibility with the HDMI 1.4 specification

Button Board Connections

No.	Function
1	Interface to product board 10-pin 2.0mm
2	Menu Button - OSD Menu
3	Down Button - OSD Menu
4	Up Button - OSD Menu
5	Enter Button - OSD Menu
6	Power Button

4.30. 4DHDMI-80-1280-800-CT-EAR-1000

- 8.0" Rectangular Display, IPS
- 1280 x 800 Resolution
- Capacitive Touch, Glass 1:1 size of LCD. Optical Bonded to LCD.
- LCD Metal Mounting Tabs
- 1000 cd/m2 brightness, Adjustable via OSD Menu
- Supports DDC
- Mini-HDMI Display Interface (19-pin), HDMI 1.4
- USB-C Power and Touch Interface
- 12V Power Input 5.5mm barrel Jack
- 3.5mm TRS Analog Audio Jack for Audio Output, 20Hz-20KHz
- Speaker Interface 4-pin 2.0mm pitch horizontal connector, 4ohm 3W Stereo
- Button Interface port for OSD, for external button board (available on request)

Specifications

Parameter	Symbol	Min	Typical	Max	Unit
Operating Temperature	-	-20	-	+70	°C
Storage Temperature	-	-30	-	+80	°C
LED Life	-	30000	-	-	Hours
Operating Voltage (USB)	V	4.8	5.0	5.2	Volts DC
Operating Current (USB)	I	-	1500	-	mA
Operating Voltage (Barrel)	V _{in}	-	12.0	-	Volts DC
Operating Current (Barrel)	I _{in}	-	580	-	mA
Brightness	-	-	1000	-	cd/m2
Contrast Ratio	-	-	1500:1	-	-

Product Photo



Product Connections



No.	Function
1	LCD Display interface
2	LCD Display Touch interface
3	12V barrel jack power input 5.5mm (Centre +)
4	Reserved interface
5	5V power & USB touch interface (Standard 16-pin Type-C)
6	Reserved interface
7	Mini-HDMI display interface (19-pin), HDMI 1.4 - See Note 1
8	3.5mm Analog Audio Output
9	Reserved interface
10	Button board interface for OSD Menu
11	Reserved interface
12	Speaker interface 4pin 1.25mm
13	Reserved interface

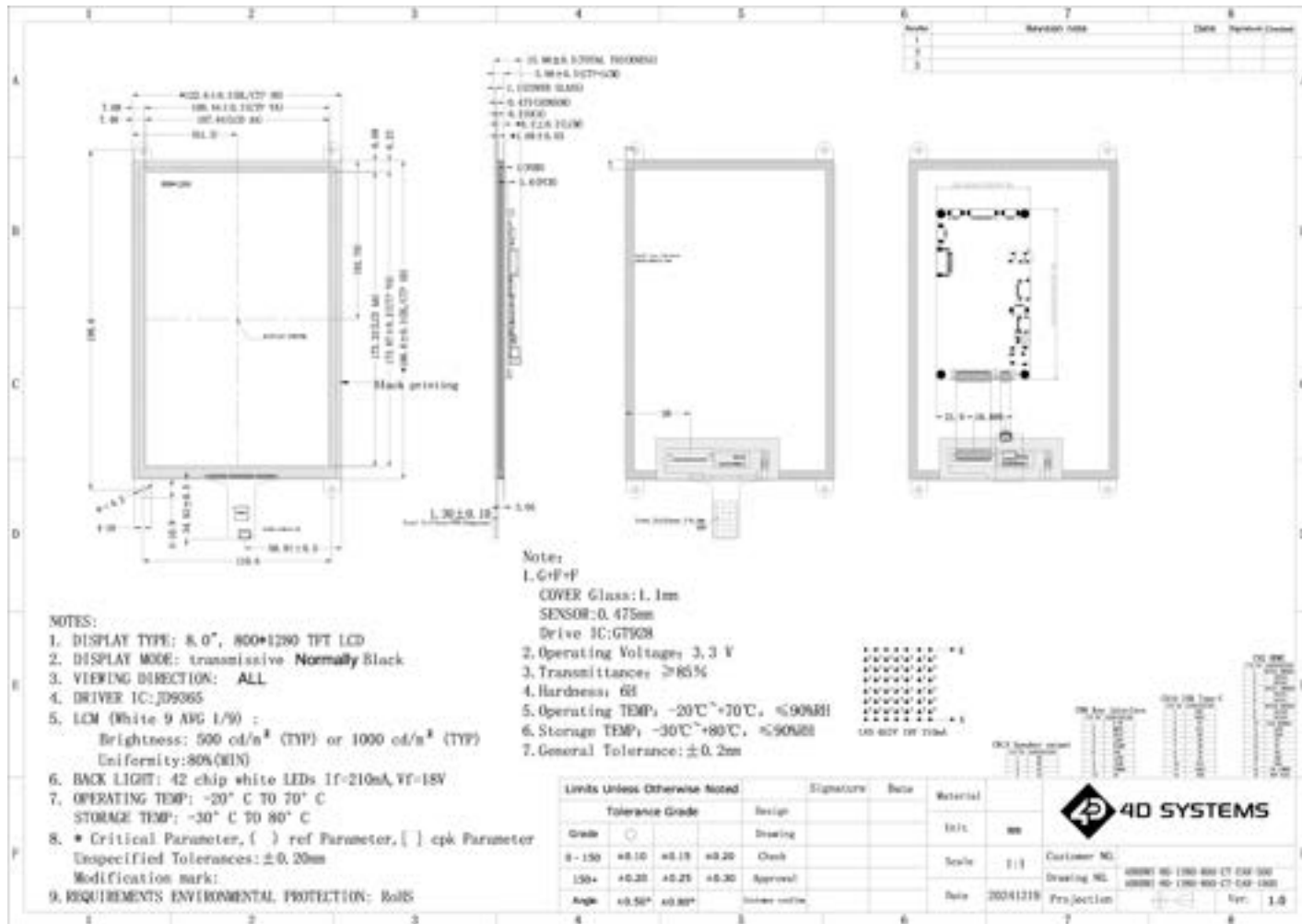
Note 1

- Type: Mini HDMI Connector
- Version: HDMI 1.4
- Description: Our 8.0-inch display is equipped with a Mini HDMI 1.4 connector for digital video and audio input. This interface allows for a simple and efficient connection to HDMI-enabled devices.
- Pin Configuration: 19-pin Mini HDMI connector
- Color Support: Supports 24-bit color depth for vibrant and clear images
- Cable Type: Standard HDMI cable is recommended for connection, with High-Speed HDMI cable required for optimal performance and to ensure compatibility with the HDMI 1.4 specification

Button Board Connections

No.	Function
1	Interface to product board 10-pin 2.0mm
2	Menu Button - OSD Menu
3	Down Button - OSD Menu
4	Up Button - OSD Menu
5	Enter Button - OSD Menu
6	Power Button

Mechanical Dimensions



[Back to Product Selection](#)

4.31. 4DHDMI-80-1280-800-CT-NM-500

- Details Coming Soon...

4.32. 4DHDMI-80-1280-800-CT-NM-1000

- Details Coming Soon...

4.33. 4DHDMI-80-1280-800-CT-CLB-500

- Details Coming Soon...

4.34. 4DHDMI-80-1280-800-CT-CLB-1000

- Details Coming Soon...

4.35. 4DHDMI-80-1280-800-NT-EAR-500

- Details Coming Soon...

4.36. 4DHDMI-80-1280-800-NT-EAR-1000

- Details Coming Soon...

4.37. 4DHDMI-80-1280-800-NT-NM-500

- Details Coming Soon...

4.38. 4DHDMI-80-1280-800-NT-NM-1000

- Details Coming Soon...

4.39. 4DHDMI-90-1024-600-CT-EAR-500

- 9.0" Rectangular Display, IPS
- 1024 x 600 Resolution
- Capacitive Touch, Glass 1:1 size of LCD. Optical Bonded to LCD.
- LCD Metal Mounting Tabs
- 500 cd/m2 brightness, Adjustable via push button on main PCBA
- Mini-HDMI Display Interface (19-pin), HDMI 1.4
- USB-C Power, and USB-C Touch Interface. 5V/GND signals are common to both micro-USB connectors, however the Touch interface only goes to the micro-USB associated to Touch

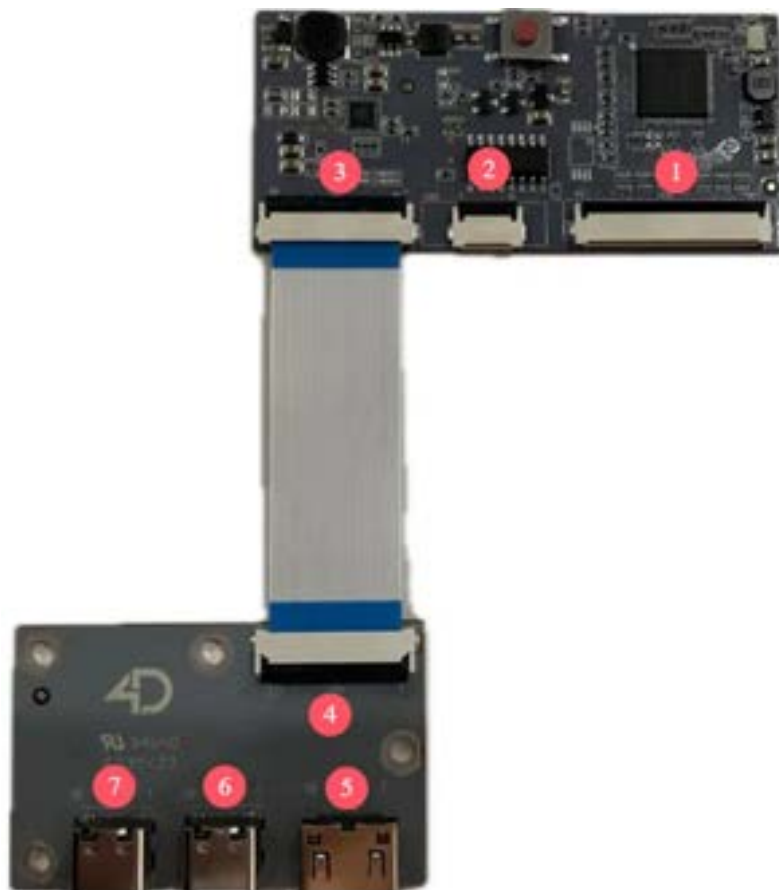
Specifications

Parameter	Symbol	Min	Typical	Max	Unit
Operating Temperature	-	-20	-	+70	°C
Storage Temperature	-	-30	-	+80	°C
LED Life	-	30000	-	-	Hours
Operating Voltage	V	4.8	5.0	5.2	Volts
Operating Current	I	-	1000	-	mA
Brightness	-	-	500	-	cd/m2
Contrast Ratio	-	-	800:1	-	-

Product Photo



Product Connections

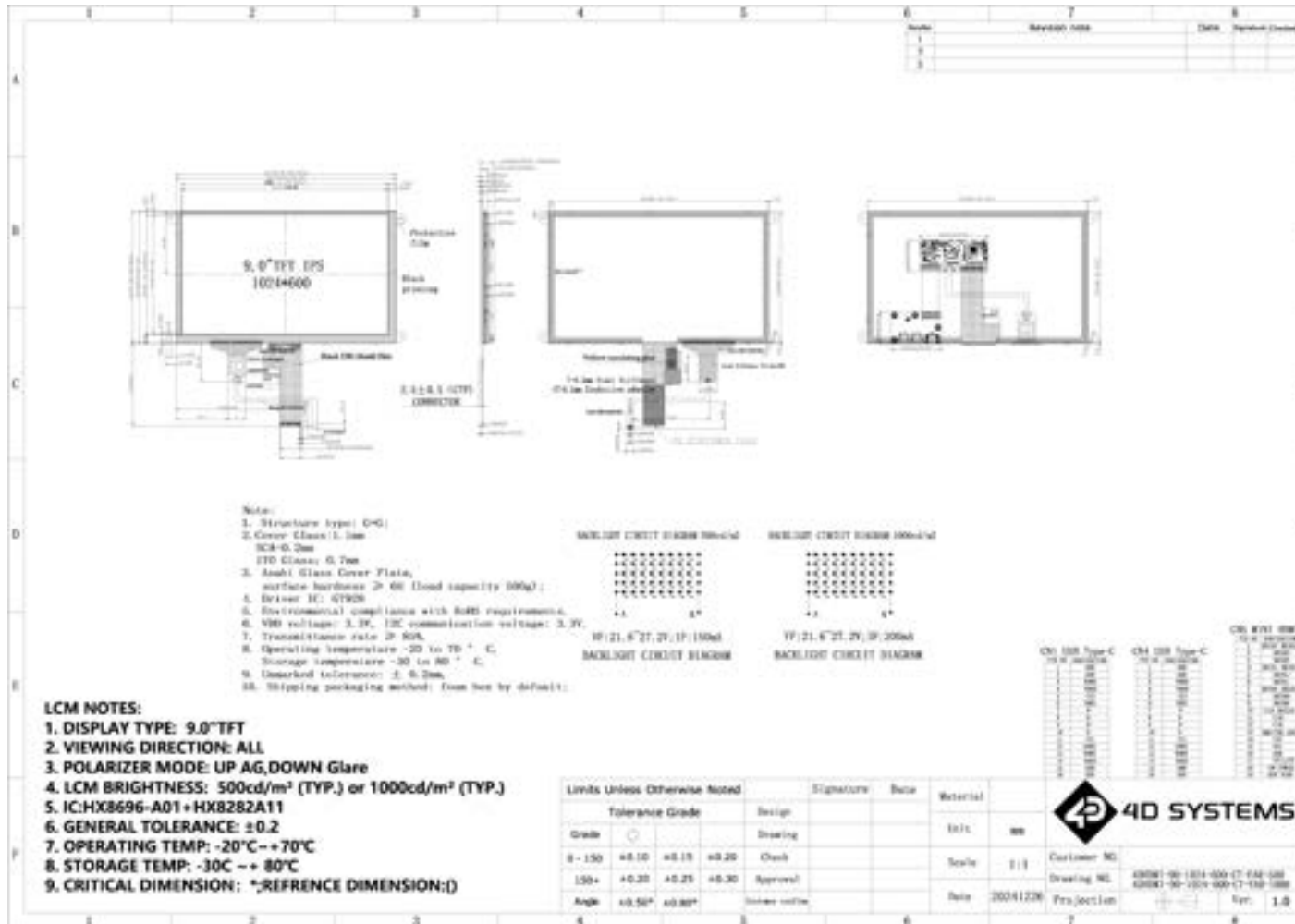


No.	Function
1	40-pin LCD Display interface
2	10-pin LCD Display Touch interface
3	30-pin Board-Board Interface
4	30-pin Board-Board Interface
5	Mini-HDMI display interface (19-pin), HDMI 1.4 - See Note 1
6	5V power interface (Standard 16Pin Type-C)
7	5V power interface (Standard 16Pin Type-C)

Note 1

- Type: Mini HDMI Connector
- Version: HDMI 1.4
- Description: Our 9.0-inch display is equipped with a Mini HDMI 1.4 connector for digital video and audio input. This interface allows for a simple and efficient connection to HDMI-enabled devices.
- Pin Configuration: 19-pin Mini HDMI connector
- Color Support: Supports 24-bit color depth for vibrant and clear images
- Cable Type: Standard HDMI cable is recommended for connection, with High-Speed HDMI cable required for optimal performance and to ensure compatibility with the HDMI 1.4 specification

Mechanical Dimensions



[Back to Product Selection](#)

4.40. 4DHDMI-90-1024-600-CT-EAR-1000

- 9.0" Rectangular Display, IPS
- 1024 x 600 Resolution
- Capacitive Touch, Glass 1:1 size of LCD. Optical Bonded to LCD.
- LCD Metal Mounting Tabs
- 1000 cd/m2 brightness, Adjustable via push button on main PCBA
- Mini-HDMI Display Interface (19-pin), HDMI 1.4
- USB-C Power, and USB-C Touch Interface. 5V/GND signals are common to both micro-USB connectors, however the Touch interface only goes to the micro-USB associated to Touch

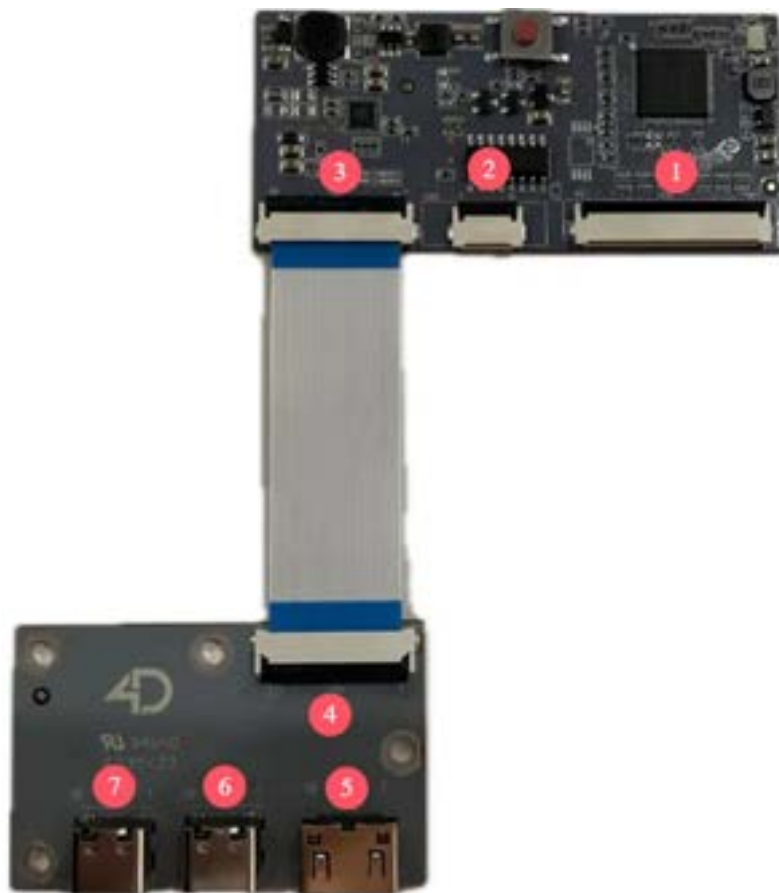
Specifications

Parameter	Symbol	Min	Typical	Max	Unit
Operating Temperature	-	-20	-	+70	°C
Storage Temperature	-	-30	-	+80	°C
LED Life	-	30000	-	-	Hours
Operating Voltage	V	4.8	5.0	5.2	Volts
Operating Current	I	-	1300	-	mA
Brightness	-	-	1000	-	cd/m2
Contrast Ratio	-	-	800:1	-	-

Product Photo



Product Connections

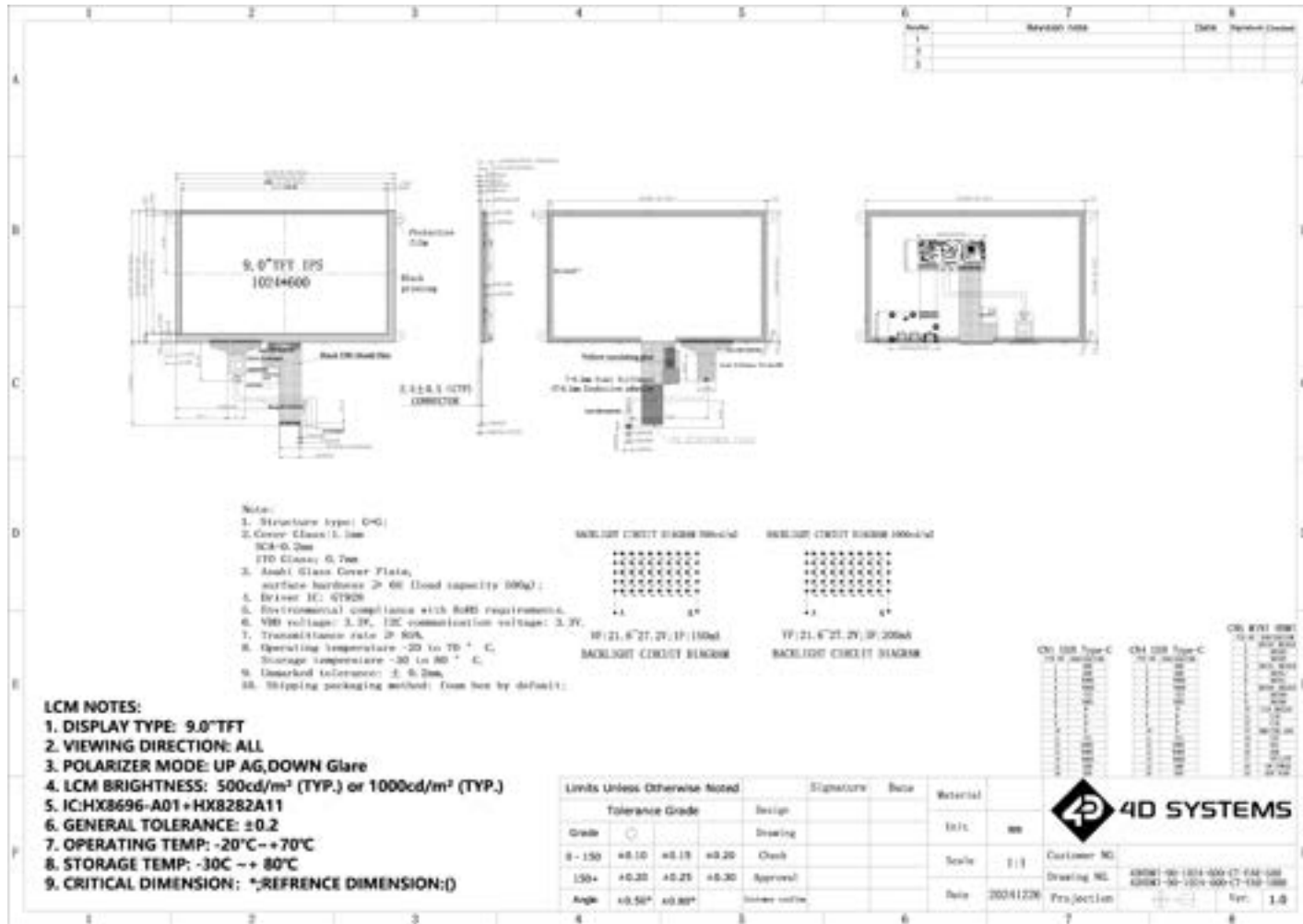


No.	Function
1	40-pin LCD Display interface
2	10-pin LCD Display Touch interface
3	30-pin Board-Board Interface
4	30-pin Board-Board Interface
5	Mini-HDMI display interface (19-pin), HDMI 1.4 - See Note 1
6	5V power interface (Standard 16Pin Type-C)
7	5V power interface (Standard 16Pin Type-C)

Note 1

- Type: Mini HDMI Connector
- Version: HDMI 1.4
- Description: Our 9.0-inch display is equipped with a Mini HDMI 1.4 connector for digital video and audio input. This interface allows for a simple and efficient connection to HDMI-enabled devices.
- Pin Configuration: 19-pin Mini HDMI connector
- Color Support: Supports 24-bit color depth for vibrant and clear images
- Cable Type: Standard HDMI cable is recommended for connection, with High-Speed HDMI cable required for optimal performance and to ensure compatibility with the HDMI 1.4 specification

Mechanical Dimensions



[Back to Product Selection](#)

4.41. 4DHDMI-90-1024-600-CT-NM-500

- Details Coming Soon...

4.42. 4DHDMI-90-1024-600-CT-NM-1000

- Details Coming Soon...

4.43. 4DHDMI-90-1024-600-CT-CLB-500

- Details Coming Soon...

4.44. 4DHDMI-90-1024-600-CT-CLB-1000

- Details Coming Soon...

4.45. 4DHDMI-90-1024-600-NT-EAR-500

- Details Coming Soon...

4.46. 4DHDMI-90-1024-600-NT-EAR-1000

- Details Coming Soon...

4.47. 4DHDMI-90-1024-600-NT-NM-500

- Details Coming Soon...

4.48. 4DHDMI-90-1024-600-NT-NM-1000

- Details Coming Soon...

4.49. 4DHDMI-90-1280-800-CT-EAR-500

- 9.0" Rectangular Display, IPS
- 1280 x 800 Resolution
- Capacitive Touch, Glass 1:1 size of LCD. Optical Bonded to LCD.
- LCD Metal Mounting Tabs
- 500 cd/m2 brightness, Adjustable via OSD Menu
- Supports DDC
- Mini-HDMI Display Interface (19-pin), HDMI 1.4
- USB-C Power and Touch Interface
- 12V Power Input 5.5mm barrel Jack
- 3.5mm TRS Analog Audio Jack for Audio Output, 20Hz-20KHz
- Speaker Interface 4-pin 2.0mm pitch horizontal connector, 4ohm 3W Stereo
- Button Interface port for OSD, for external button board (available on request)

Specifications

Parameter	Symbol	Min	Typical	Max	Unit
Operating Temperature	-	-20	-	+70	°C
Storage Temperature	-	-30	-	+80	°C
LED Life	-	30000	-	-	Hours
Operating Voltage (USB)	V	4.8	5.0	5.2	Volts DC
Operating Current (USB)	I	-	TBA	-	mA
Operating Voltage (Barrel)	V _{in}	-	12.0	-	Volts DC
Operating Current (Barrel)	I _{in}	-	TBA	-	mA
Brightness	-	-	500	-	cd/m2
Contrast Ratio	-	-	1000:1	-	-

Product Photo



Product Connections



No.	Function
1	LCD Display interface
2	LCD Display Touch interface
3	12V barrel jack power input 5.5mm (Centre +)
4	Reserved interface
5	5V power & USB touch interface (Standard 16-pin Type-C)
6	Reserved interface
7	Mini-HDMI display interface (19-pin), HDMI 1.4 - See Note 1
8	3.5mm Analog Audio Output
9	Reserved interface
10	Button board interface for OSD Menu
11	Reserved interface
12	Speaker interface 4pin 1.25mm
13	Reserved interface

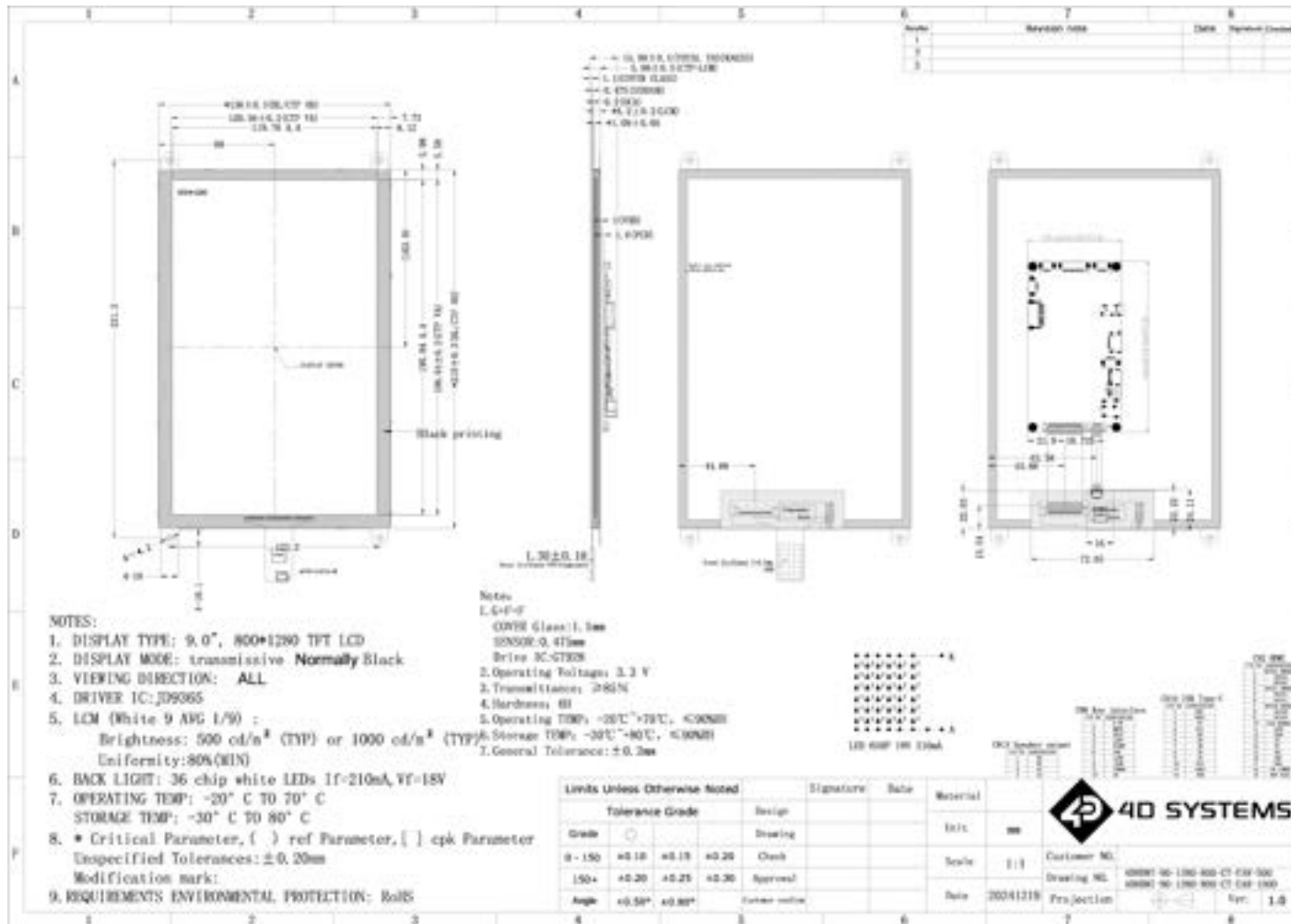
Note 1

- Type: Mini HDMI Connector
- Version: HDMI 1.4
- Description: Our 8.0-inch display is equipped with a Mini HDMI 1.4 connector for digital video and audio input. This interface allows for a simple and efficient connection to HDMI-enabled devices.
- Pin Configuration: 19-pin Mini HDMI connector
- Color Support: Supports 24-bit color depth for vibrant and clear images
- Cable Type: Standard HDMI cable is recommended for connection, with High-Speed HDMI cable required for optimal performance and to ensure compatibility with the HDMI 1.4 specification

Button Board Connections

No.	Function
1	Interface to product board 10-pin 2.0mm
2	Menu Button - OSD Menu
3	Down Button - OSD Menu
4	Up Button - OSD Menu
5	Enter Button - OSD Menu
6	Power Button

Mechanical Dimensions



[Back to Product Selection](#)

4.50. 4DHDMI-90-1280-800-CT-EAR-1000

- 9.0" Rectangular Display, IPS
- 1280 x 800 Resolution
- Capacitive Touch, Glass 1:1 size of LCD. Optical Bonded to LCD.
- LCD Metal Mounting Tabs
- 1000 cd/m2 brightness, Adjustable via OSD Menu
- Supports DDC
- Mini-HDMI Display Interface (19-pin), HDMI 1.4
- USB-C Power and Touch Interface
- 12V Power Input 5.5mm barrel Jack
- 3.5mm TRS Analog Audio Jack for Audio Output, 20Hz-20KHz
- Speaker Interface 4-pin 2.0mm pitch horizontal connector, 4ohm 3W Stereo
- Button Interface port for OSD, for external button board (available on request)

Specifications

Parameter	Symbol	Min	Typical	Max	Unit
Operating Temperature	-	-20	-	+70	°C
Storage Temperature	-	-30	-	+80	°C
LED Life	-	30000	-	-	Hours
Operating Voltage (USB)	V	4.8	5.0	5.2	Volts DC
Operating Current (USB)	I	-	TBA	-	mA
Operating Voltage (Barrel)	V _{in}	-	12.0	-	Volts DC
Operating Current (Barrel)	I _{in}	-	TBA	-	mA
Brightness	-	-	1000	-	cd/m2
Contrast Ratio	-	-	1000:1	-	-

Product Photo



Product Connections



No.	Function
1	LCD Display interface
2	LCD Display Touch interface
3	12V barrel jack power input 5.5mm (Centre +)
4	Reserved interface
5	5V power & USB touch interface (Standard 16-pin Type-C)
6	Reserved interface
7	Mini-HDMI display interface (19-pin), HDMI 1.4 - See Note 1
8	3.5mm Analog Audio Output
9	Reserved interface
10	Button board interface for OSD Menu
11	Reserved interface
12	Speaker interface 4pin 1.25mm
13	Reserved interface

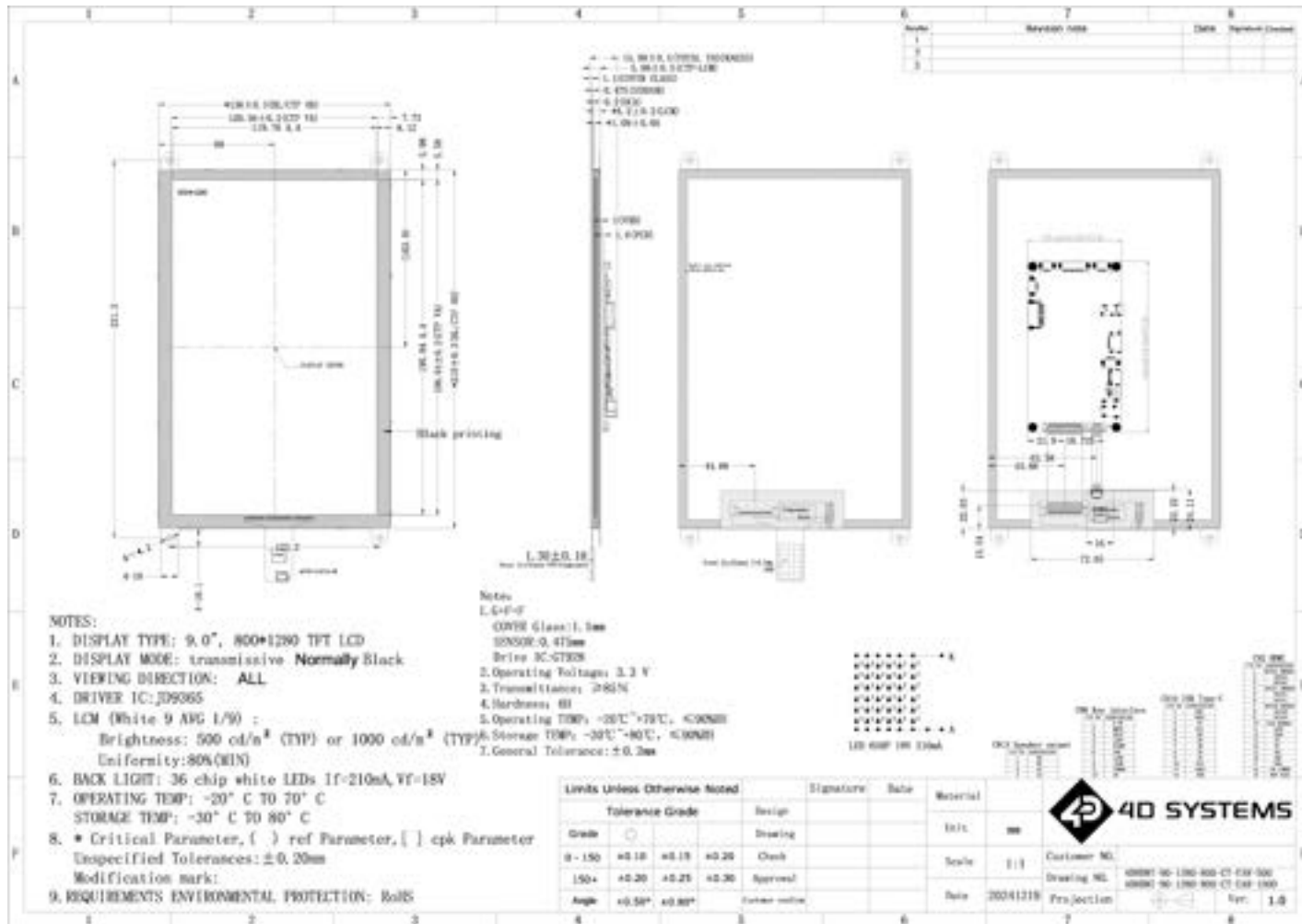
Note 1

- Type: Mini HDMI Connector
- Version: HDMI 1.4
- Description: Our 8.0-inch display is equipped with a Mini HDMI 1.4 connector for digital video and audio input. This interface allows for a simple and efficient connection to HDMI-enabled devices.
- Pin Configuration: 19-pin Mini HDMI connector
- Color Support: Supports 24-bit color depth for vibrant and clear images
- Cable Type: Standard HDMI cable is recommended for connection, with High-Speed HDMI cable required for optimal performance and to ensure compatibility with the HDMI 1.4 specification

Button Board Connections

No.	Function
1	Interface to product board 10-pin 2.0mm
2	Menu Button - OSD Menu
3	Down Button - OSD Menu
4	Up Button - OSD Menu
5	Enter Button - OSD Menu
6	Power Button

Mechanical Dimensions



[Back to Product Selection](#)

4.51. 4DHDMI-90-1280-800-CT-NM-500

- Details Coming Soon...

4.52. 4DHDMI-90-1280-800-CT-NM-1000

- Details Coming Soon...

4.53. 4DHDMI-90-1280-800-CT-CLB-500

- Details Coming Soon...

4.54. 4DHDMI-90-1280-800-CT-CLB-1000

- Details Coming Soon...

4.55. 4DHDMI-90-1280-800-NT-EAR-500

- Details Coming Soon...

4.56. 4DHDMI-90-1280-800-NT-EAR-1000

- Details Coming Soon...

4.57. 4DHDMI-90-1280-800-NT-NM-500

- Details Coming Soon...

4.58. 4DHDMI-90-1280-800-NT-NM-1000

- Details Coming Soon...

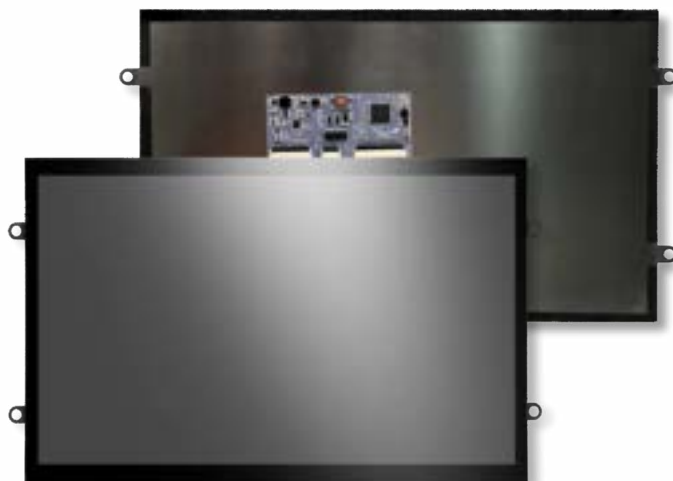
4.59. 4DHDMI-101-1024-600-CT-EAR-500

- 10.1" Rectangular Display, IPS
- 1024 x 600 Resolution
- Capacitive Touch, Glass 1:1 size of LCD. Optical Bonded to LCD.
- LCD Metal Mounting Tabs
- 500 cd/m2 brightness, Adjustable via push button on main PCBA
- Mini-HDMI Display Interface (19-pin), HDMI 1.4
- USB-C Power, and USB-C Touch Interface. 5V/GND signals are common to both micro-USB connectors, however the Touch interface only goes to the micro-USB associated to Touch

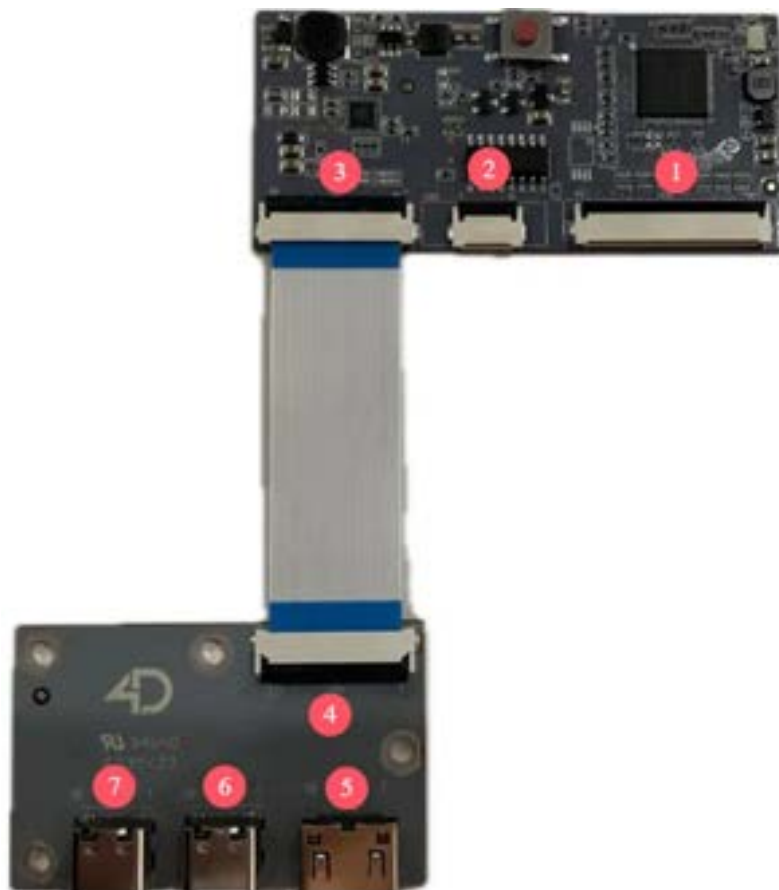
Specifications

Parameter	Symbol	Min	Typical	Max	Unit
Operating Temperature	-	-20	-	+70	°C
Storage Temperature	-	-30	-	+80	°C
LED Life	-	30000	-	-	Hours
Operating Voltage	V	4.8	5.0	5.2	Volts
Operating Current	I	-	770	-	mA
Brightness	-	-	500	-	cd/m2
Contrast Ratio	-	-	800:1	-	-

Product Photo



Product Connections



No.	Function
1	40-pin LCD Display interface
2	10-pin LCD Display Touch interface
3	30-pin Board-Board Interface
4	30-pin Board-Board Interface
5	Mini-HDMI display interface (19-pin), HDMI 1.4 - See Note 1
6	5V power & USB touch interface (Standard 16Pin Type-C)
7	5V power & USB touch interface (Standard 16Pin Type-C)

Note 1

- Type: Mini HDMI Connector
- Version: HDMI 1.4
- Description: Our 10.1-inch display is equipped with a Mini HDMI 1.4 connector for digital video and audio input. This interface allows for a simple and efficient connection to HDMI-enabled devices.
- Pin Configuration: 19-pin Mini HDMI connector
- Color Support: Supports 24-bit color depth for vibrant and clear images
- Cable Type: Standard HDMI cable is recommended for connection, with High-Speed HDMI cable required for optimal performance and to ensure compatibility with the HDMI 1.4 specification

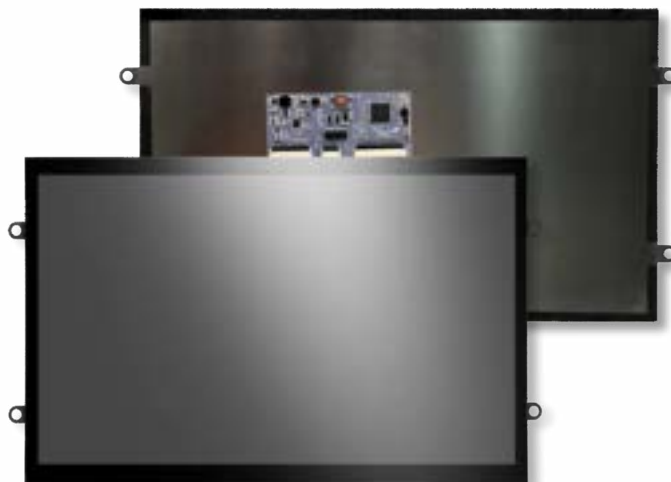
4.60. 4DHDMI-101-1024-600-CT-EAR-1000

- 10.1" Rectangular Display, IPS
- 1024 x 600 Resolution
- Capacitive Touch, Glass 1:1 size of LCD. Optical Bonded to LCD.
- LCD Metal Mounting Tabs
- 1000 cd/m2 brightness, Adjustable via push button on main PCBA
- Mini-HDMI Display Interface (19-pin), HDMI 1.4
- USB-C Power, and USB-C Touch Interface. 5V/GND signals are common to both micro-USB connectors, however the Touch interface only goes to the micro-USB associated to Touch

Specifications

Parameter	Symbol	Min	Typical	Max	Unit
Operating Temperature	-	-20	-	+70	°C
Storage Temperature	-	-30	-	+80	°C
LED Life	-	30000	-	-	Hours
Operating Voltage	V	4.8	5.0	5.2	Volts
Operating Current	I	-	1480	-	mA
Brightness	-	-	1000	-	cd/m2
Contrast Ratio	-	-	800:1	-	-

Product Photo



Product Connections

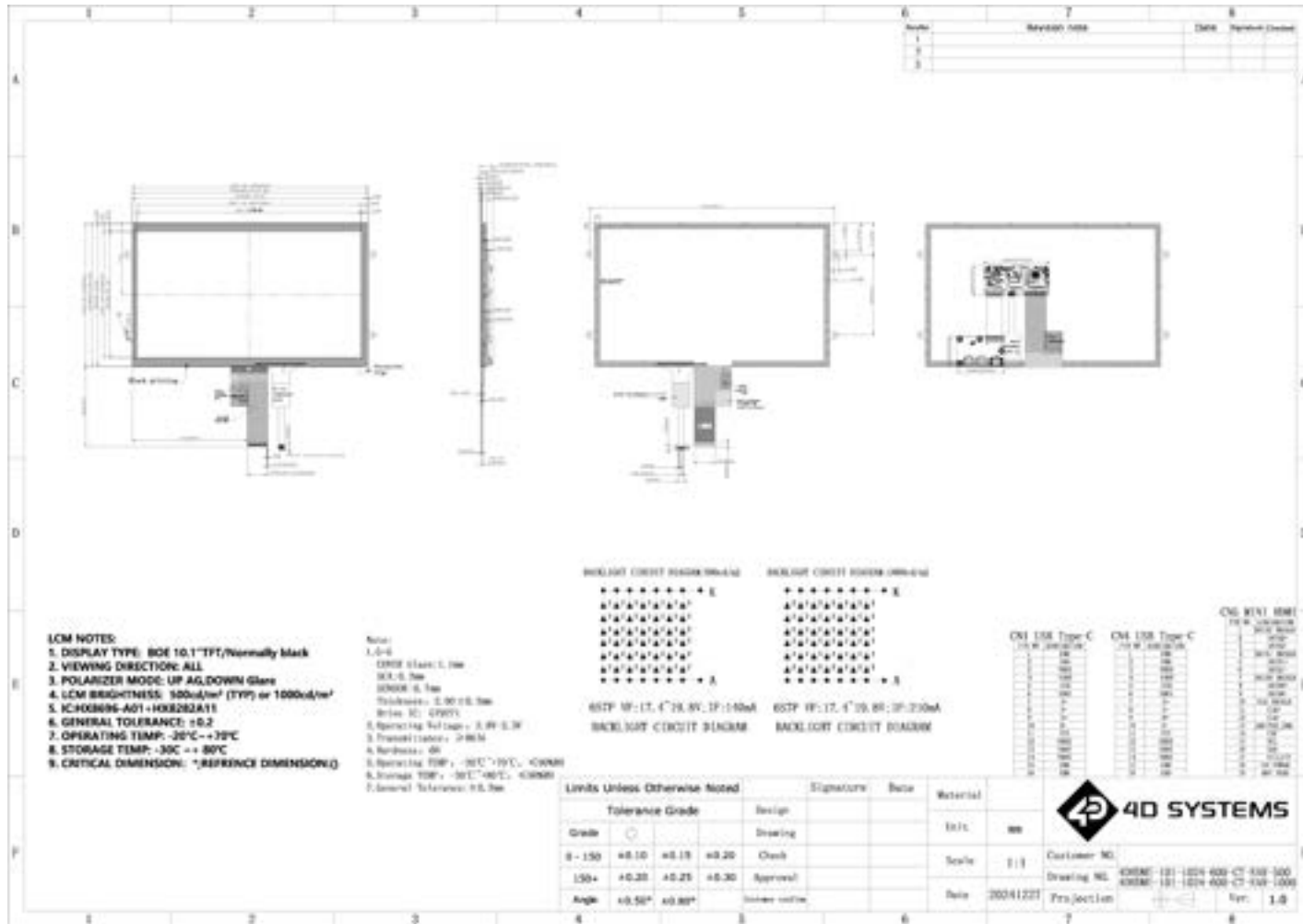


No.	Function
1	40-pin LCD Display interface
2	10-pin LCD Display Touch interface
3	30-pin Board-Board Interface
4	30-pin Board-Board Interface
5	Mini-HDMI display interface (19-pin), HDMI 1.4 - See Note 1
6	5V power & USB touch interface (Standard 16Pin Type-C)
7	5V power & USB touch interface (Standard 16Pin Type-C)

Note 1

- Type: Mini HDMI Connector
- Version: HDMI 1.4
- Description: Our 10.1-inch display is equipped with a Mini HDMI 1.4 connector for digital video and audio input. This interface allows for a simple and efficient connection to HDMI-enabled devices.
- Pin Configuration: 19-pin Mini HDMI connector
- Color Support: Supports 24-bit color depth for vibrant and clear images
- Cable Type: Standard HDMI cable is recommended for connection, with High-Speed HDMI cable required for optimal performance and to ensure compatibility with the HDMI 1.4 specification

Mechanical Dimensions



[Back to Product Selection](#)

4.61. 4DHDMI-101-1024-600-CT-NM-500

- Details Coming Soon...

4.62. 4DHDMI-101-1024-600-CT-NM-1000

- Details Coming Soon...

4.63. 4DHDMI-101-1024-600-CT-CLB-500

- Details Coming Soon...

4.64. 4DHDMI-101-1024-600-CT-CLB-1000

- Details Coming Soon...

4.65. 4DHDMI-101-1024-600-NT-EAR-500

- Details Coming Soon...

4.66. 4DHDMI-101-1024-600-NT-EAR-1000

- Details Coming Soon...

4.67. 4DHDMI-101-1024-600-NT-NM-500

- Details Coming Soon...

4.68. 4DHDMI-101-1024-600-NT-NM-1000

- Details Coming Soon...

4.69. 4DHDMI-101-1280-800-CT-NM-300(L)

- Details Coming Soon...

4.70. 4DHDMI-101-1280-800-NT-NM-300(L)

- Details Coming Soon...

4.71. 4DHDMI-101-1280-800-CT-EAR-500

- 10.1" Rectangular Display, IPS
- 1280 x 800 Resolution
- Capacitive Touch, Glass 1:1 size of LCD. Optical Bonded to LCD.
- LCD Metal Mounting Tabs
- 500 cd/m2 brightness, Adjustable via OSD Menu
- Supports DDC
- Mini-HDMI Display Interface (19-pin), HDMI 1.4
- USB-C Power and Touch Interface
- 12V Power Input 5.5mm barrel Jack
- 3.5mm TRS Analog Audio Jack for Audio Output, 20Hz-20KHz
- Speaker Interface 4-pin 2.0mm pitch horizontal connector, 4ohm 3W Stereo
- Button Interface port for OSD, for external button board (available on request)

Specifications

Parameter	Symbol	Min	Typical	Max	Unit
Operating Temperature	-	-20	-	+70	°C
Storage Temperature	-	-30	-	+80	°C
LED Life	-	30000	-	-	Hours
Operating Voltage (USB)	V	4.8	5.0	5.2	Volts DC
Operating Current (USB)	I	-	TBA	-	mA
Operating Voltage (Barrel)	V _{in}	-	12.0	-	Volts DC
Operating Current (Barrel)	I _{in}	-	TBA	-	mA
Brightness	-	-	500	-	cd/m2
Contrast Ratio	-	-	1000:1	-	-

Product Photo



Product Connections

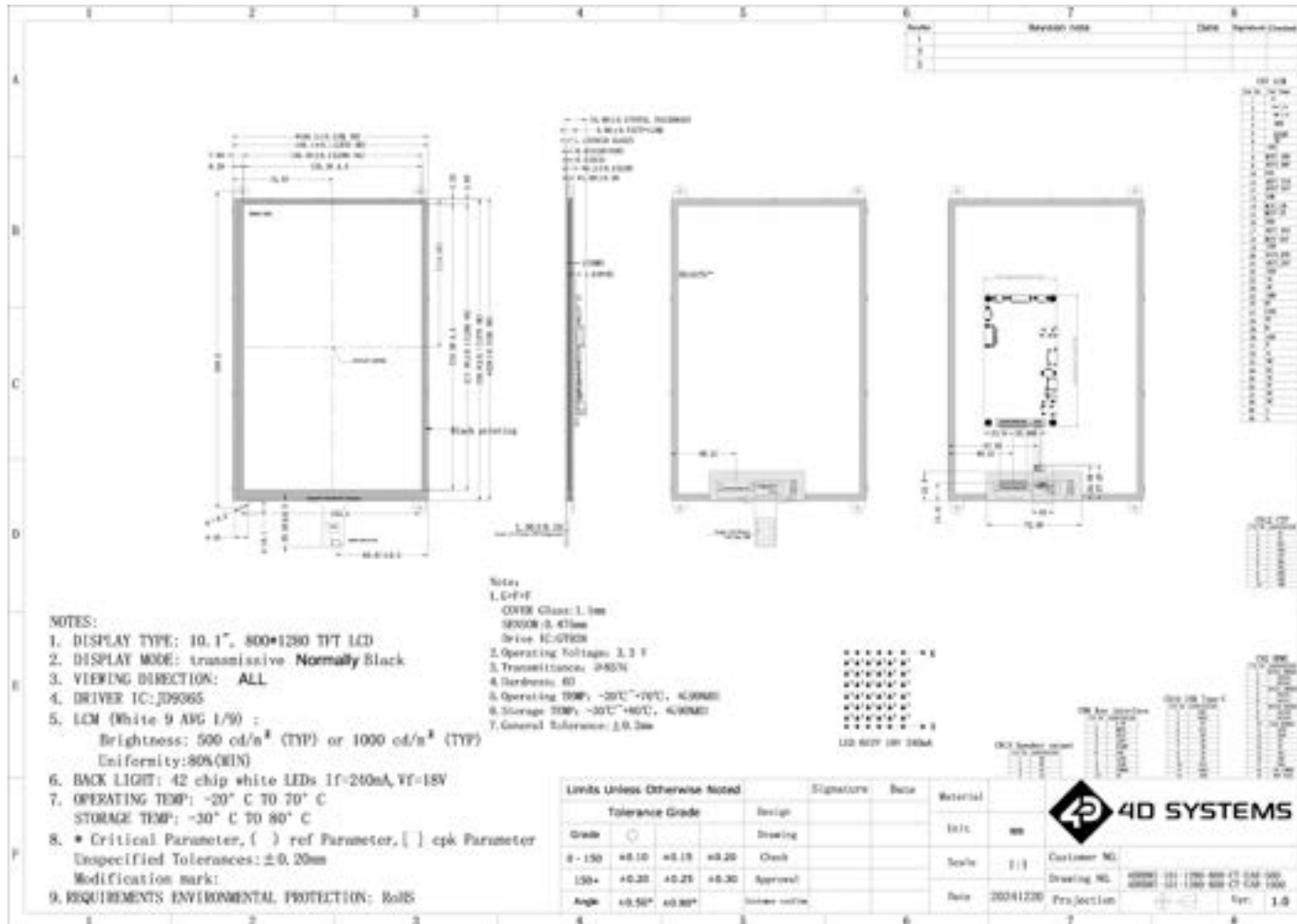


No.	Function
1	LCD Display interface
2	LCD Display Touch interface
3	12V barrel jack power input 5.5mm (Centre +)
4	Reserved interface
5	5V power & USB touch interface (Standard 16Pin Type-C)
6	Reserved interface
7	Mini-HDMI display interface (19-pin), HDMI 1.4 - See Note 1
8	3.5mm Analog Audio Output
9	Reserved interface
10	Button board interface for OSD Menu
11	Reserved interface
12	Speaker interface
13	Reserved interface

Note 1

- Type: Mini HDMI Connector
- Version: HDMI 1.4
- Description: Our 10.1-inch display is equipped with a Mini HDMI 1.4 connector for digital video and audio input. This interface allows for a simple and efficient connection to HDMI-enabled devices.
- Pin Configuration: 19-pin Mini HDMI connector
- Color Support: Supports 24-bit color depth for vibrant and clear images
- Cable Type: Standard HDMI cable is recommended for connection, with High-Speed HDMI cable required for optimal performance and to ensure compatibility with the HDMI 1.4 specification

Mechanical Dimensions



[Back to Product Selection](#)

4.72. 4DHDMI-101-1280-800-CT-EAR-1000

- 10.1" Rectangular Display, IPS
- 1280 x 800 Resolution
- Capacitive Touch, Glass 1:1 size of LCD. Optical Bonded to LCD.
- LCD Metal Mounting Tabs
- 1000 cd/m2 brightness, Adjustable via OSD Menu
- Supports DDC
- Mini-HDMI Display Interface (19-pin), HDMI 1.4
- USB-C Power and Touch Interface
- 12V Power Input 5.5mm barrel Jack
- 3.5mm TRS Analog Audio Jack for Audio Output, 20Hz-20KHz
- Speaker Interface 4-pin 2.0mm pitch horizontal connector, 4ohm 3W Stereo
- Button Interface port for OSD, for external button board (available on request)

Specifications

Parameter	Symbol	Min	Typical	Max	Unit
Operating Temperature	-	-20	-	+70	°C
Storage Temperature	-	-30	-	+80	°C
LED Life	-	30000	-	-	Hours
Operating Voltage (USB)	V	4.8	5.0	5.2	Volts DC
Operating Current (USB)	I	-	1700	-	mA
Operating Voltage (Barrel)	V _{in}	-	12.0	-	Volts DC
Operating Current (Barrel)	I _{in}	-	650	-	mA
Brightness	-	-	1000	-	cd/m2
Contrast Ratio	-	-	1000:1	-	-

Product Photo



Product Connections

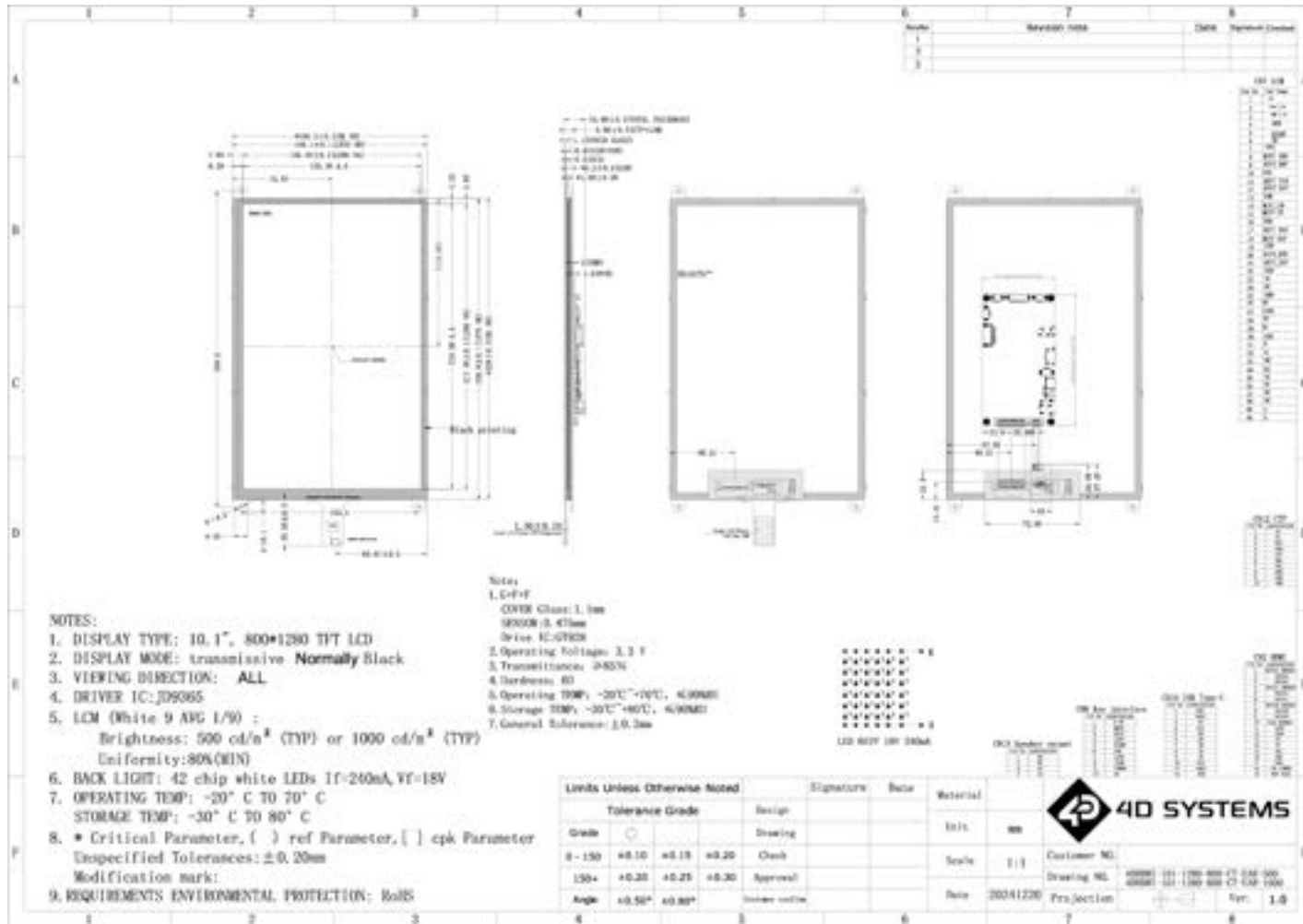


No.	Function
1	LCD Display interface
2	LCD Display Touch interface
3	12V barrel jack power input 5.5mm (Centre +)
4	Reserved interface
5	5V power & USB touch interface (Standard 16Pin Type-C)
6	Reserved interface
7	Mini-HDMI display interface (19-pin), HDMI 1.4 - See Note 1
8	3.5mm Analog Audio Output
9	Reserved interface
10	Button board interface for OSD Menu
11	Reserved interface
12	Speaker interface
13	Reserved interface

 **Note 1**

- Type: Mini HDMI Connector
- Version: HDMI 1.4
- Description: Our 10.1-inch display is equipped with a Mini HDMI 1.4 connector for digital video and audio input. This interface allows for a simple and efficient connection to HDMI-enabled devices.
- Pin Configuration: 19-pin Mini HDMI connector
- Color Support: Supports 24-bit color depth for vibrant and clear images
- Cable Type: Standard HDMI cable is recommended for connection, with High-Speed HDMI cable required for optimal performance and to ensure compatibility with the HDMI 1.4 specification

Mechanical Dimensions



[Back to Product Selection](#)

4.73. 4DHDMI-101-1280-800-CT-NM-500

- Details Coming Soon...

4.74. 4DHDMI-101-1280-800-CT-NM-1000

- Details Coming Soon...

4.75. 4DHDMI-101-1280-800-CT-CLB-500

- Details Coming Soon...

4.76. 4DHDMI-101-1280-800-CT-CLB-1000

- Details Coming Soon...

4.77. 4DHDMI-101-1280-800-NT-EAR-500

- Details Coming Soon...

4.78. 4DHDMI-101-1280-800-NT-EAR-1000

- Details Coming Soon...

4.79. 4DHDMI-101-1280-800-NT-NM-500

- Details Coming Soon...

4.80. 4DHDMI-101-1280-800-NT-NM-1000

- Details Coming Soon...

4.81. 4DHDMI-101-1920-1200-CT-NM-600

- 10.1" Rectangular Display, IPS
- 1920 x 1200 Resolution
- Capacitive Touch
- No Mounting Solution, bare display only
- 600 cd/m2 brightness
- Supports DDC
- Standard HDMI Display Interface (19-pin), HDMI 1.4
- USB Touch interface via supplied cable
- 12V Power Input 5.5mm barrel Jack via supplied cable

Specifications

Parameter	Symbol	Min	Typical	Max	Unit
Operating Temperature	-	-20	-	+70	°C
Storage Temperature	-	-30	-	+80	°C
LED Life	-	30000	-	-	Hours
Operating Voltage (Barrel)	V _{in}	-	12.0	-	Volts DC
Operating Current (Barrel)	I _{in}	-	TBA	-	mA
Brightness	-	-	600	-	cd/m2
Contrast Ratio	-	-	1500:1	-	-

Product Photo



Product Connections

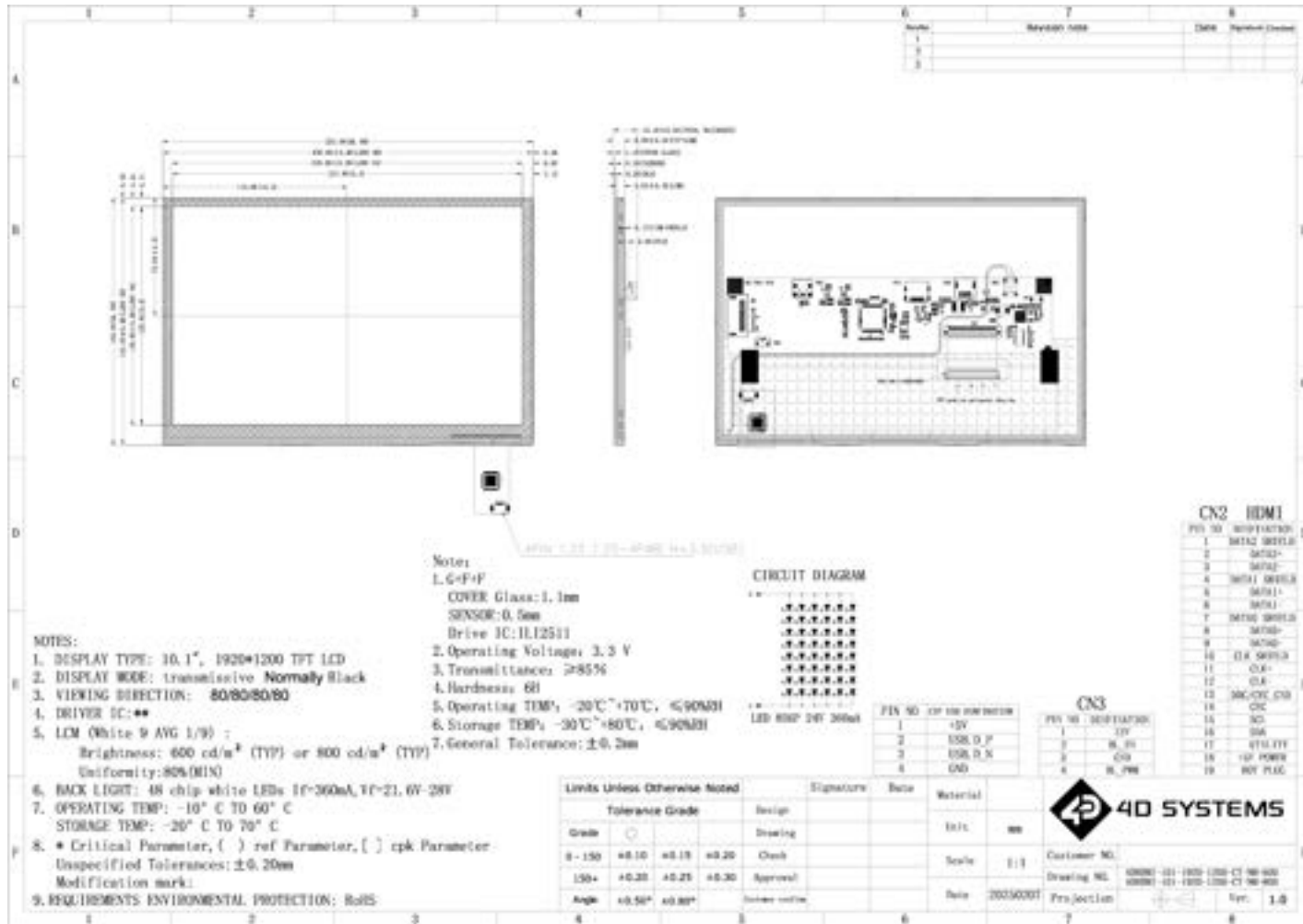


No.	Function
1	LCD Display interface 60-pin
2	LCD Backlight Interface
3	12V barrel jack power input 5.5mm (Centre +) via supplied cable
4	Standard HDMI display interface (19-pin), HDMI 1.4 - See Note 1
5	Reserved
6	Reserved

Note 1

- Type: Standard HDMI Connector
- Version: HDMI 1.4
- Description: Our 10.1-inch display is equipped with a Standard HDMI 1.4 connector for digital video and audio input. This interface allows for a simple and efficient connection to HDMI-enabled devices.
- Pin Configuration: 19-pin Type A HDMI connector
- Color Support: Supports 24-bit color depth for vibrant and clear images
- Cable Type: Standard HDMI cable is recommended for connection, with High-Speed HDMI cable required for optimal performance and to ensure compatibility with the HDMI 1.4 specification

Mechanical Dimensions



[Back to Product Selection](#)

4.82. 4DHDMI-101-1920-1200-CT-NM-800

- 10.1" Rectangular Display, IPS
- 1920 x 1200 Resolution
- Capacitive Touch
- No Mounting Solution, bare display only
- 800 cd/m2 brightness
- Supports DDC
- Standard HDMI Display Interface (19-pin), HDMI 1.4
- USB Touch interface via supplied cable
- 12V Power Input 5.5mm barrel Jack via supplied cable

Specifications

Parameter	Symbol	Min	Typical	Max	Unit
Operating Temperature	-	-20	-	+70	°C
Storage Temperature	-	-30	-	+80	°C
LED Life	-	30000	-	-	Hours
Operating Voltage (Barrel)	V _{in}	-	12.0	-	Volts DC
Operating Current (Barrel)	I _{in}	-	910	-	mA
Brightness	-	-	800	-	cd/m2
Contrast Ratio	-	-	1500:1	-	-

Product Photo



Product Connections

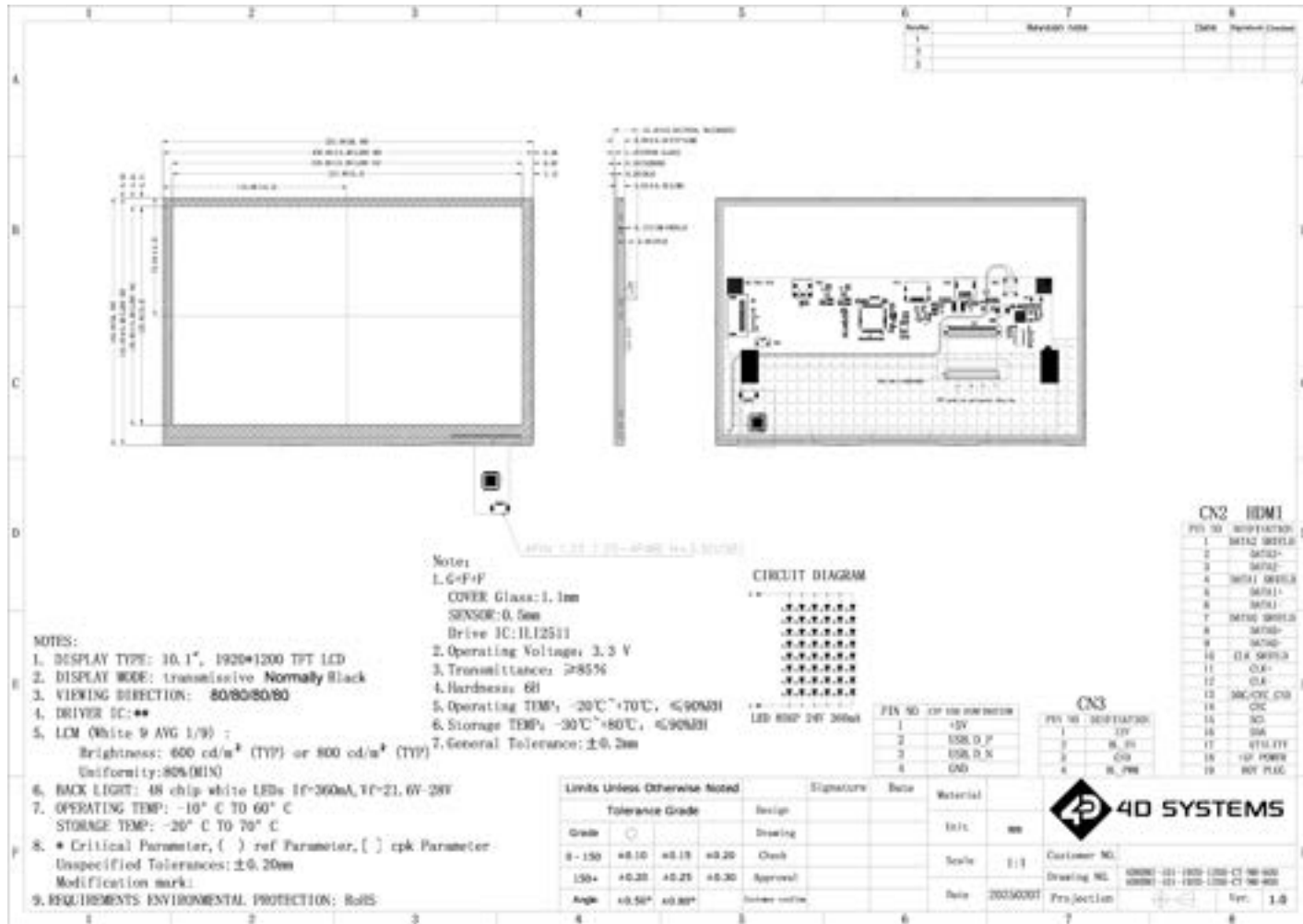


No.	Function
1	LCD Display interface 60-pin
2	LCD Backlight Interface
3	12V barrel jack power input 5.5mm (Centre +) via supplied cable
4	Standard HDMI display interface (19-pin), HDMI 1.4 - See Note 1
5	Reserved
6	Reserved

Note 1

- Type: Standard HDMI Connector
- Version: HDMI 1.4
- Description: Our 10.1-inch display is equipped with a Standard HDMI 1.4 connector for digital video and audio input. This interface allows for a simple and efficient connection to HDMI-enabled devices.
- Pin Configuration: 19-pin Type A HDMI connector
- Color Support: Supports 24-bit color depth for vibrant and clear images
- Cable Type: Standard HDMI cable is recommended for connection, with High-Speed HDMI cable required for optimal performance and to ensure compatibility with the HDMI 1.4 specification

Mechanical Dimensions



[Back to Product Selection](#)

4.83. 4DHDMI-101-1920-1200-NT-NM-600

- Details Coming Soon...

4.84. 4DHDMI-101-1920-1200-NT-NM-800

- Details Coming Soon...

4.85. 4DHDMI-121-1280-800-CT-NM-500

- Details Coming Soon...

4.86. 4DHDMI-121-1280-800-CT-NM-850

- Details Coming Soon...

4.87. 4DHDMI-121-1280-800-CT-EAR-500

- 12.1" Rectangular Display, IPS
- 1280 x 800 Resolution
- Capacitive Touch, Glass 1:1 size of LCD. Air Bonded to LCD.
- LCD Metal Mounting Tabs
- 500 cd/m2 brightness, Adjustable via OSD Menu
- Supports DDC
- Full-size HDMI Display Interface (19-pin), HDMI 1.4
- USB-C Touch Interface
- 12V Power Input 5.5mm barrel Jack
- 5 Buttons for OSD Interface

Specifications

Parameter	Symbol	Min	Typical	Max	Unit
Operating Temperature	-	-20	-	+70	°C
Storage Temperature	-	-30	-	+80	°C
LED Life	-	30000	-	-	Hours
Operating Voltage (Barrel)	V _{in}	-	12.0	-	Volts DC
Operating Current (Barrel)	I _{in}	-	TBA	-	mA
Brightness	-	-	500	-	cd/m ²
Contrast Ratio	-	-	800:1	-	-

Product Photo



Product Connections

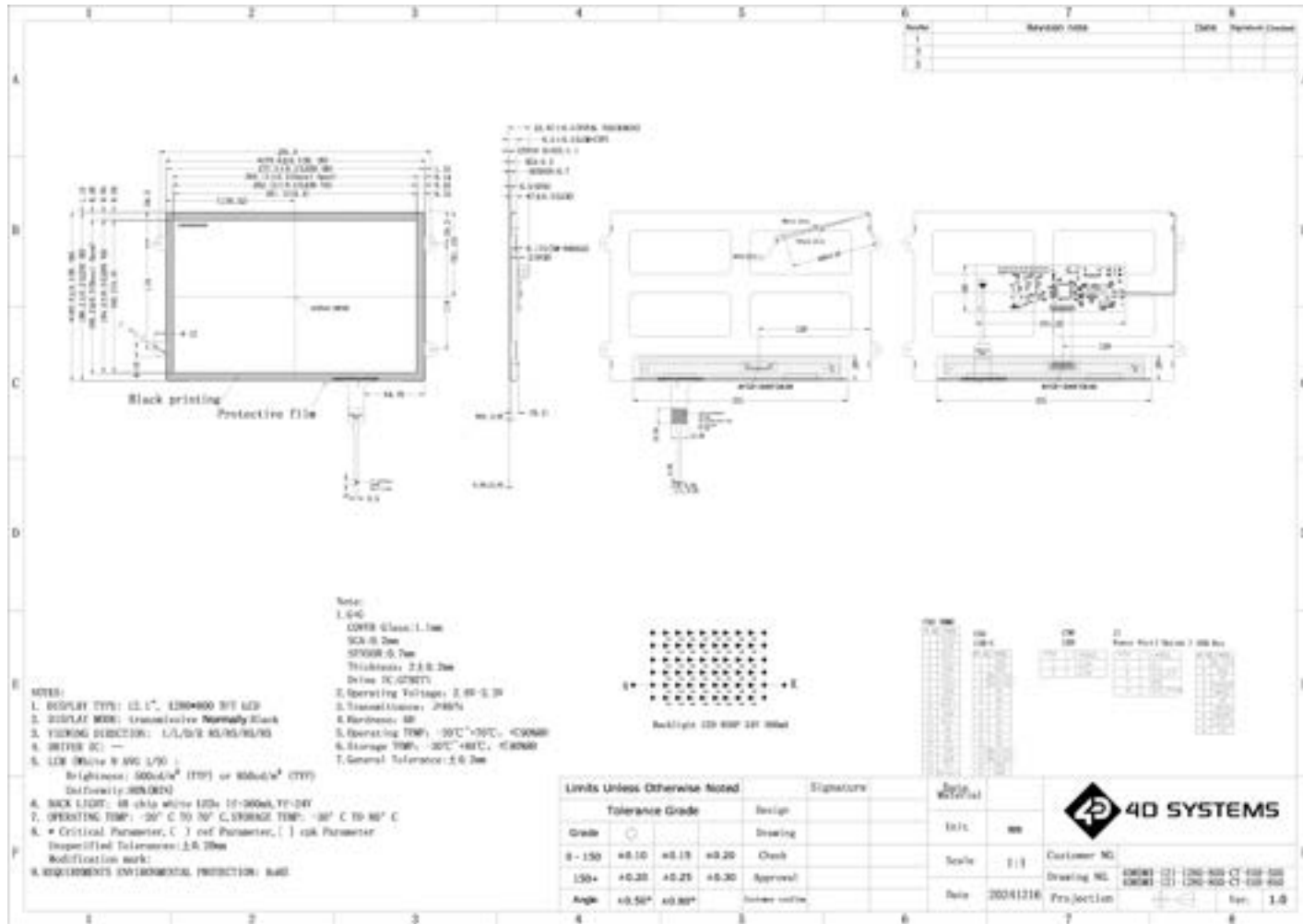


No.	Function
1	LCD Backlight interface
2	12V barrel jack power input 5.5mm (Centre +)
3	Standard HDMI display interface (19-pin), HDMI 1.4 - See Note 1
4	USB touch interface (Standard 16-pin Type-C)
5	Exit Button - OSD Menu
6	Down Button - OSD Menu
7	Up Button - OSD Menu
8	Menu Button - OSD Menu
9	Power Button
10	3.5mm Analog Audio Output (Not fitted standard)
11	6-pin LCD Display Touch interface
12	40-pin LCD Display interface

Note 1

- Type: Standard HDMI Connector
- Version: HDMI 1.4
- Description: Our 12.1-inch display is equipped with a Standard HDMI 1.4 connector for digital video and audio input. This interface allows for a simple and efficient connection to HDMI-enabled devices.
- Pin Configuration: 19-pin Type A HDMI connector
- Color Support: Supports 24-bit color depth for vibrant and clear images
- Cable Type: Standard HDMI cable is recommended for connection, with High-Speed HDMI cable required for optimal performance and to ensure compatibility with the HDMI 1.4 specification

Mechanical Dimensions



[Back to Product Selection](#)

4.88. 4DHDMI-121-1280-800-CT-EAR-850

- 12.1" Rectangular Display, IPS
- 1280 x 800 Resolution
- Capacitive Touch, Glass 1:1 size of LCD. Air Bonded to LCD.
- LCD Metal Mounting Tabs
- 850 cd/m2 brightness, Adjustable via OSD Menu
- Supports DDC
- Full-size HDMI Display Interface (19-pin), HDMI 1.4
- USB-C Touch Interface
- 12V Power Input 5.5mm barrel Jack
- 5 Buttons for OSD Interface

Specifications

Parameter	Symbol	Min	Typical	Max	Unit
Operating Temperature	-	-20	-	+70	°C
Storage Temperature	-	-30	-	+80	°C
LED Life	-	30000	-	-	Hours
Operating Voltage (Barrel)	Vin	-	12.0	-	Volts DC
Operating Current (Barrel)	Iin	-	910	-	mA
Brightness	-	-	850	-	cd/m2
Contrast Ratio	-	-	800:1	-	-

Product Photo



Product Connections



No.	Function
1	LCD Backlight interface
2	12V barrel jack power input 5.5mm (Centre +)
3	Standard HDMI display interface (19-pin), HDMI 1.4 - See Note 1
4	USB touch interface (Standard 16-pin Type-C)
5	Exit Button - OSD Menu
6	Down Button - OSD Menu
7	Up Button - OSD Menu
8	Menu Button - OSD Menu
9	Power Button
10	3.5mm Analog Audio Output (Not fitted standard)
11	6-pin LCD Display Touch interface
12	40-pin LCD Display interface

Note 1

- Type: Standard HDMI Connector
- Version: HDMI 1.4
- Description: Our 12.1-inch display is equipped with a Standard HDMI 1.4 connector for digital video and audio input. This interface allows for a simple and efficient connection to HDMI-enabled devices.
- Pin Configuration: 19-pin Type A HDMI connector
- Color Support: Supports 24-bit color depth for vibrant and clear images
- Cable Type: Standard HDMI cable is recommended for connection, with High-Speed HDMI cable required for optimal performance and to ensure compatibility with the HDMI 1.4 specification

4.89. 4DHDMI-121-1280-800-NT-NM-500

- Details Coming Soon...

4.90. 4DHDMI-121-1280-800-NT-NM-850

- Details Coming Soon...

4.91. 4DHDMI-121-1280-800-NT-EAR-500

- Details Coming Soon...

4.92. 4DHDMI-121-1280-800-NT-EAR-850

- Details Coming Soon...

4.93. 4DHDMI-156-1920-1080-CT-CLB-500

- 15.6" Rectangular Display, IPS
- 1920 x 1080 (HD) Resolution
- Capacitive Touch. Optical Bonded to LCD.
- Cover Lens Bezel, Glass mounting - Must be customised, discuss with Sales Team
- 500 cd/m2 brightness, Adjustable via OSD Menu
- Supports DDC
- Full-size HDMI Display Interface (19-pin), HDMI 1.4
- USB-A Touch Interface, Cable integrated
- 12V Power Input 5.5mm barrel Jack or power header
- Button Interface port for OSD, for external button board (available on request)

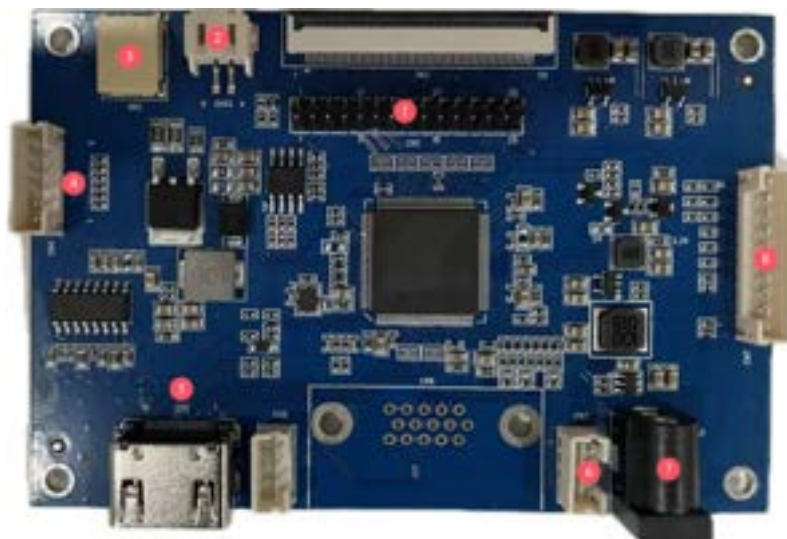
Specifications

Parameter	Symbol	Min	Typical	Max	Unit
Operating Temperature	-	-20	-	+70	°C
Storage Temperature	-	-30	-	+80	°C
LED Life	-	30000	-	-	Hours
Operating Voltage (Barrel)	Vin	-	12.0	-	Volts DC
Operating Current (Barrel)	Iin	-	TBA	-	mA
Brightness	-	-	500	-	cd/m2
Contrast Ratio	-	-	800:1	-	-

Product Photo



Product Connections



No.	Function
1	LCD Display interface
2	Reserved interface
3	LCD Display Backlight interface
4	Reserved interface
5	Full-size HDMI Display Interface (19-pin), HDMI 1.4 - See Note 1
6	12V power input connector, 4 pin, 2.0mm pitch connector
7	12V barrel jack power input 5.5mm (Centre +)
8	Button board interface for OSD Menu, 10 pin, 2.0mm pitch connector

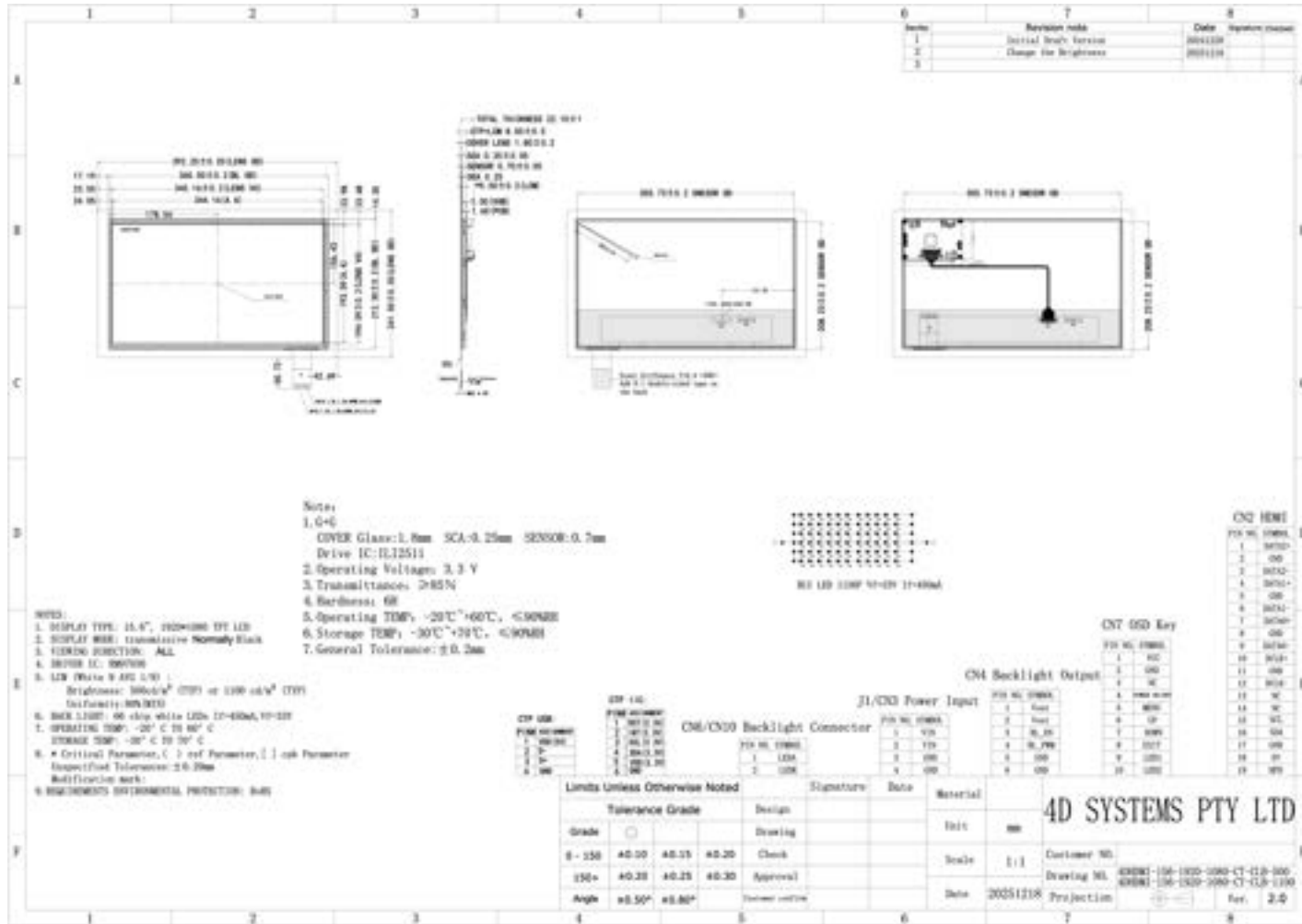
Note 1

- Type: Standard HDMI Connector
- Version: HDMI 1.4
- Description: Our 12.1-inch display is equipped with a Standard HDMI 1.4 connector for digital video and audio input. This interface allows for a simple and efficient connection to HDMI-enabled devices.
- Pin Configuration: 19-pin Type A HDMI connector
- Color Support: Supports 24-bit color depth for vibrant and clear images
- Cable Type: Standard HDMI cable is recommended for connection, with High-Speed HDMI cable required for optimal performance and to ensure compatibility with the HDMI 1.4 specification

Button Board Connections

No.	Function
1	Interface to product board 10-pin 2.0mm
2	Exit Button - OSD Menu
3	Down Button - OSD Menu
4	Up Button - OSD Menu
5	Menu/Enter Button - OSD Menu
6	Power Button

Mechanical Dimensions



4.94. 4DHDMI-156-1920-1080-CT-CLB-1100

- 15.6" Rectangular Display, IPS
- 1920 x 1080 (HD) Resolution
- Capacitive Touch. Optical Bonded to LCD.
- Cover Lens Bezel, Glass mounting - Must be customised, discuss with Sales Team
- 1100 cd/m2 brightness, Adjustable via OSD Menu
- Supports DDC
- Full-size HDMI Display Interface (19-pin), HDMI 1.4
- USB-A Power/Touch Interface, Cable integrated
- 12V Power Input 5.5mm barrel Jack or power header
- Button Interface port for OSD, for external button board (available on request)

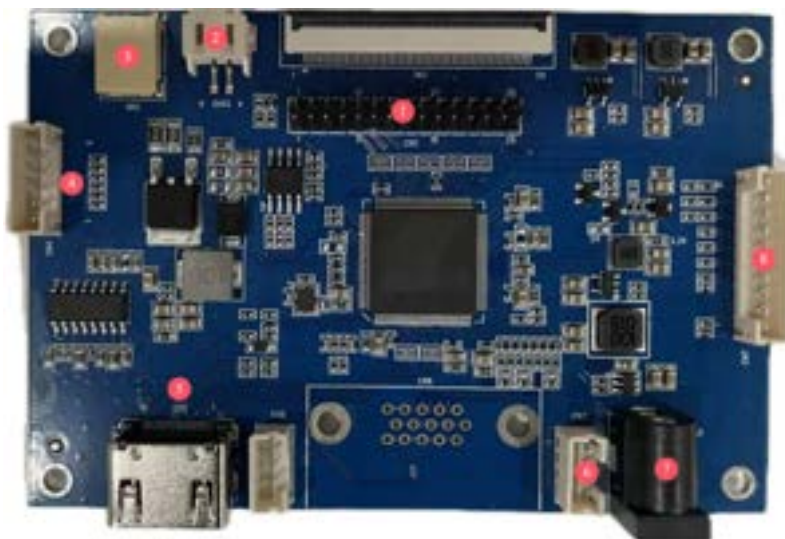
Specifications

Parameter	Symbol	Min	Typical	Max	Unit
Operating Temperature	-	-20	-	+70	°C
Storage Temperature	-	-30	-	+80	°C
LED Life	-	30000	-	-	Hours
Operating Voltage (Barrel)	V _{in}	-	12.0	-	Volts DC
Operating Current (Barrel)	I _{in}	-	TBA	-	mA
Brightness	-	-	1100	-	cd/m ²
Contrast Ratio	-	-	800:1	-	-

Product Photo



Product Connections



No.	Function
1	LCD Display interface
2	Reserved interface
3	LCD Display Backlight interface
4	Reserved interface
5	Full-size HDMI Display Interface (19-pin), HDMI 1.4 - See Note 1
6	12V power input connector, 4 pin, 2.0mm pitch connector
7	12V barrel jack power input 5.5mm (Centre +)
8	Button board interface for OSD Menu, 10 pin, 2.0mm pitch connector

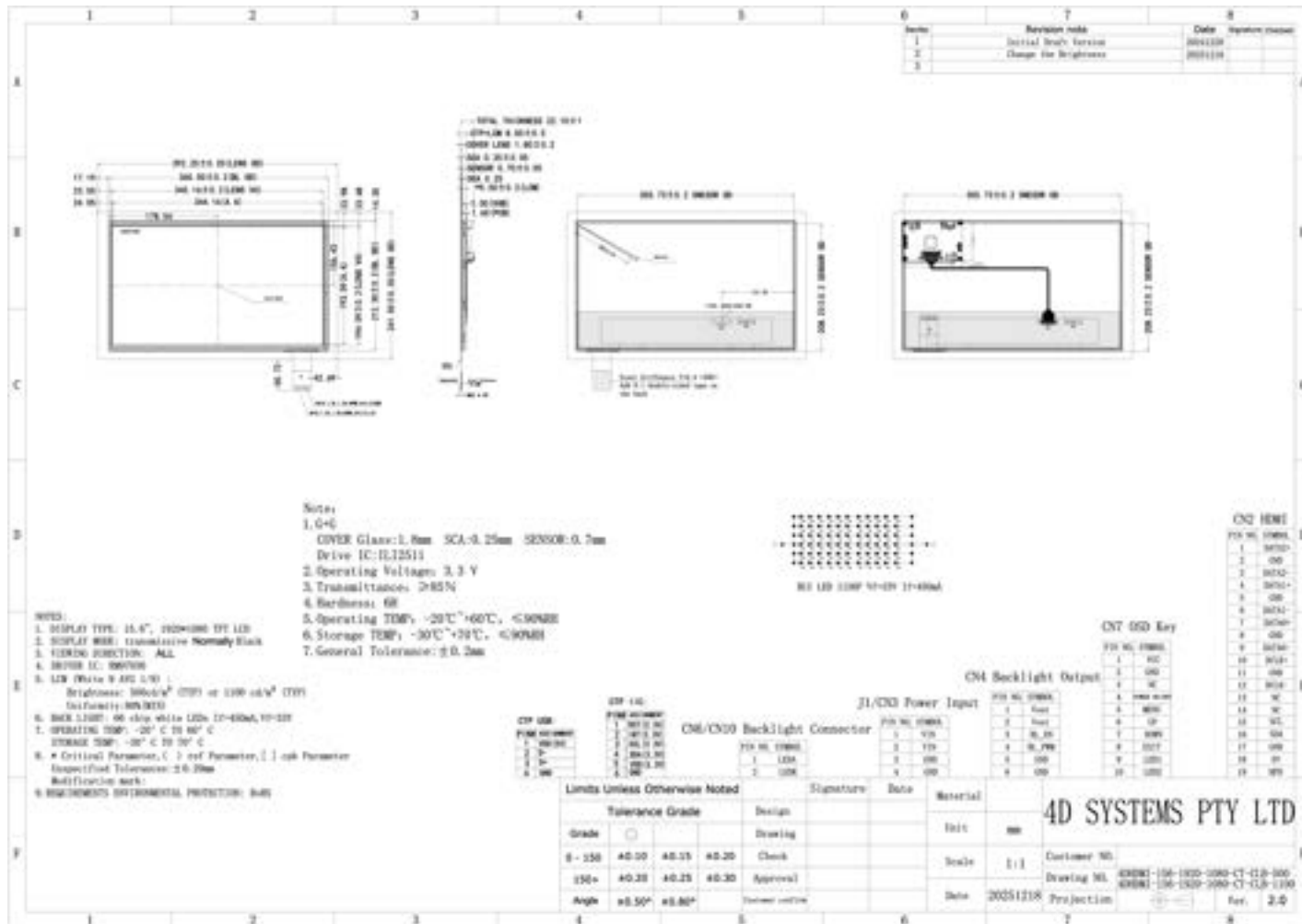
Note 1

- Type: Standard HDMI Connector
- Version: HDMI 1.4
- Description: Our 12.1-inch display is equipped with a Standard HDMI 1.4 connector for digital video and audio input. This interface allows for a simple and efficient connection to HDMI-enabled devices.
- Pin Configuration: 19-pin Type A HDMI connector
- Color Support: Supports 24-bit color depth for vibrant and clear images
- Cable Type: Standard HDMI cable is recommended for connection, with High-Speed HDMI cable required for optimal performance and to ensure compatibility with the HDMI 1.4 specification

Button Board Connections

No.	Function
1	Interface to product board 10-pin 2.0mm
2	Exit Button - OSD Menu
3	Down Button - OSD Menu
4	Up Button - OSD Menu
5	Menu/Enter Button - OSD Menu
6	Power Button

Mechanical Dimensions



[Back to Product Selection](#)

4.95. 4DHDMI-156-1920-1080-NT-NM-500

- 15.6" Rectangular Display, IPS
- 1920 x 1080 (HD) Resolution
- Non Touch
- No Mounting Solution, bare display only
- 500 cd/m2 brightness, Adjustable via OSD Menu
- Supports DDC
- Full-size HDMI Display Interface (19-pin), HDMI 1.4
- 12V Power Input 5.5mm barrel Jack or power header
- Button Interface port for OSD, for external button board (available on request)

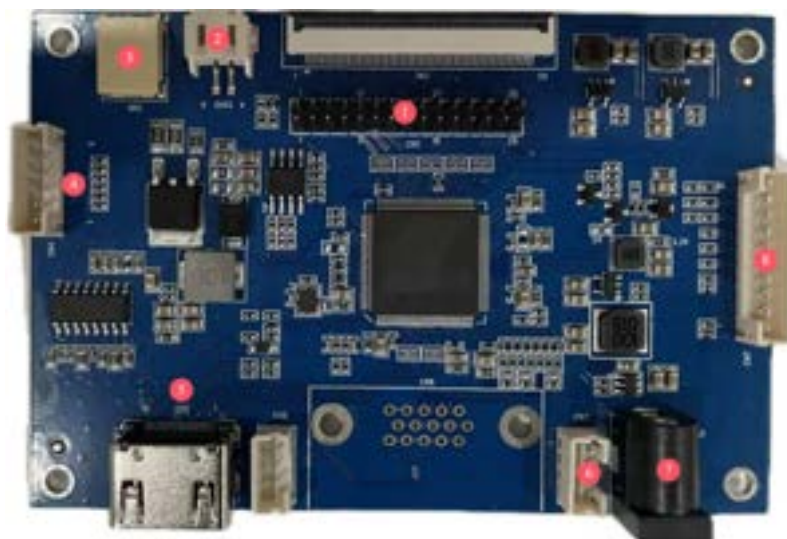
Specifications

Parameter	Symbol	Min	Typical	Max	Unit
Operating Temperature	-	-20	-	+70	°C
Storage Temperature	-	-30	-	+80	°C
LED Life	-	30000	-	-	Hours
Operating Voltage (Barrel)	V _{in}	-	12.0	-	Volts DC
Operating Current (Barrel)	I _{in}	-	TBA	-	mA
Brightness	-	-	500	-	cd/m ²
Contrast Ratio	-	-	800:1	-	-

Product Photo



Product Connections



No.	Function
1	LCD Display interface
2	Reserved interface
3	LCD Display Backlight interface
4	Reserved interface
5	Full-size HDMI Display Interface (19-pin), HDMI 1.4 - See Note 1
6	12V power input connector, 4 pin, 2.0mm pitch connector
7	12V barrel jack power input 5.5mm (Centre +)
8	Button board interface for OSD Menu, 10 pin, 2.0mm pitch connector

Note 1

- Type: Standard HDMI Connector
- Version: HDMI 1.4
- Description: Our 12.1-inch display is equipped with a Standard HDMI 1.4 connector for digital video and audio input. This interface allows for a simple and efficient connection to HDMI-enabled devices.
- Pin Configuration: 19-pin Type A HDMI connector
- Color Support: Supports 24-bit color depth for vibrant and clear images
- Cable Type: Standard HDMI cable is recommended for connection, with High-Speed HDMI cable required for optimal performance and to ensure compatibility with the HDMI 1.4 specification

Button Board Connections

No.	Function
1	Interface to product board 10-pin 2.0mm
2	Exit Button - OSD Menu
3	Down Button - OSD Menu
4	Up Button - OSD Menu
5	Menu/Enter Button - OSD Menu
6	Power Button

4.96. 4DHDMI-156-1920-1080-NT-NM-1100

- 15.6" Rectangular Display, IPS
- 1920 x 1080 (HD) Resolution
- Non Touch
- No Mounting Solution, bare display only
- 1100 cd/m2 brightness, Adjustable via OSD Menu
- Supports DDC
- Full-size HDMI Display Interface (19-pin), HDMI 1.4
- 12V Power Input 5.5mm barrel Jack or power header
- Button Interface port for OSD, for external button board (available on request)

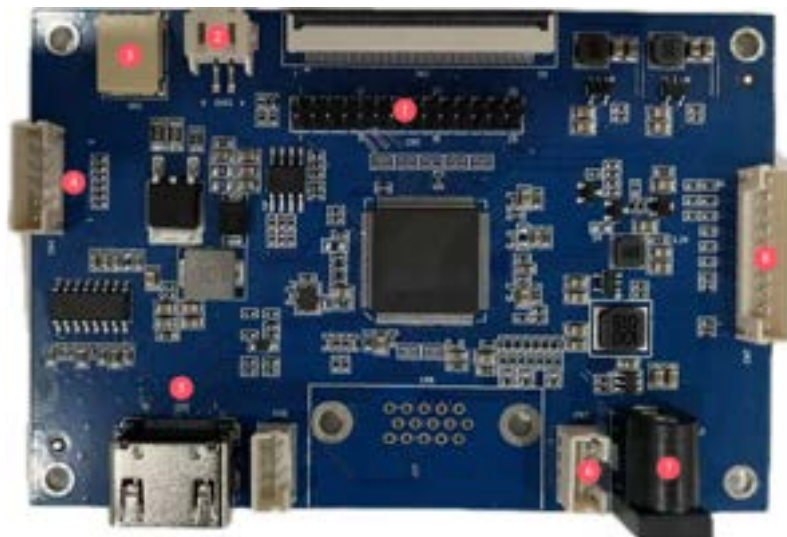
Specifications

Parameter	Symbol	Min	Typical	Max	Unit
Operating Temperature	-	-20	-	+70	°C
Storage Temperature	-	-30	-	+80	°C
LED Life	-	30000	-	-	Hours
Operating Voltage (Barrel)	Vin	-	12.0	-	Volts DC
Operating Current (Barrel)	Iin	-	TBA	-	mA
Brightness	-	-	1100	-	cd/m2
Contrast Ratio	-	-	800:1	-	-

Product Photo



Product Connections



No.	Function
1	LCD Display interface
2	Reserved interface
3	LCD Display Backlight interface
4	Reserved interface
5	Full-size HDMI Display Interface (19-pin), HDMI 1.4 - See Note 1
6	12V power input connector, 4 pin, 2.0mm pitch connector
7	12V barrel jack power input 5.5mm (Centre +)
8	Button board interface for OSD Menu, 10 pin, 2.0mm pitch connector

Note 1

- Type: Standard HDMI Connector
- Version: HDMI 1.4
- Description: Our 12.1-inch display is equipped with a Standard HDMI 1.4 connector for digital video and audio input. This interface allows for a simple and efficient connection to HDMI-enabled devices.
- Pin Configuration: 19-pin Type A HDMI connector
- Color Support: Supports 24-bit color depth for vibrant and clear images
- Cable Type: Standard HDMI cable is recommended for connection, with High-Speed HDMI cable required for optimal performance and to ensure compatibility with the HDMI 1.4 specification

Button Board Connections

No.	Function
1	Interface to product board 10-pin 2.0mm
2	Exit Button - OSD Menu
3	Down Button - OSD Menu
4	Up Button - OSD Menu
5	Menu/Enter Button - OSD Menu
6	Power Button

5. Part Number Breakdown

4DHDMI-1-2-3-4-5-6

- 1 = Size
- 2 = Horizontal Resolution
- 3 = Vertical Resolution
- 4 = Touch Option
- 5 = Mounting Option
- 6 = Brightness

Details:

- 1 - Size inches : 34 = 3.4", 50 = 5.0", 70 = 7.0", 101 = 10.1", 121 = 12.1" etc
- 2 - Horizontal Resolution : 480, 800, 1024, 1280, 1920 Pixels
- 3 - Vertical Resolution : 272, 480, 600, 800, 1080, 1200, Pixels
- 4 - Touch Option : NT = Non Touch, CT = Capacitive Touch
- 5 - Mounting Option : EAR = Metal or Plastic EARs/Tabs, CLB = Glass Cover Lens Bezel, NM = No Mounting option
- 6 - Brightness : 350 = 350nits, 500 = 500nits, 1000 = 1000nits

Example:

4DHDMI-70-800-1280-CT-EAR-1000

7.0", 800x1280 resolution, Capacitive Touch, Mounting tabs/ears, 1000nit (cd/m2)

6. Revision History

📄 Datasheet Revision		
Revision Number	Date	Description
0.1	01/03/2025	Initial Draft
1.0	08/08/2025	Public Release
1.1	18/12/2025	Added AMOLED variants and 15.6" variants
1.2	03/03/2026	Updated models which support DDC

7. Legal Notice

7.1. Proprietary Information

The information contained in this document is the property of 4D Systems Pty. Ltd. and may be the subject of patents pending or granted, and must not be copied or disclosed without prior written permission. 4D Systems endeavours to ensure that the information in this document is correct and fairly stated but does not accept liability for any error or omission. The development of 4D Systems products and services is continuous and published information may not be up to date. It is important to check the current position with 4D Systems. 4D Systems reserves the right to modify, update or makes changes to Specifications or written material without prior notice at any time.

All trademarks belong to their respective owners and are recognised and acknowledged.

7.2. Disclaimer of Warranties & Limitations of Liabilities

4D Systems makes no warranty, either expressed or implied with respect to any product, and specifically disclaims all other warranties, including, without limitation, warranties for merchantability, non-infringement and fitness for any particular purpose.

Information contained in this publication regarding device applications and the like is provided only for your convenience and may be superseded by updates. It is your responsibility to ensure that your application meets with your specifications.

Images and graphics used throughout this document are for illustrative purposes only. All images and graphics used are possible to be displayed on the 4D Systems range of products, however the quality may vary.

In no event shall 4D Systems be liable to the buyer or to any third party for any indirect, incidental, special, consequential, punitive or exemplary damages (including without limitation lost profits, lost savings, or loss of business opportunity) arising out of or relating to any product or service provided or to be provided by 4D Systems, or the use or inability to use the same, even if 4D Systems has been advised of the possibility of such damages.

4D Systems products are not fault tolerant nor designed, manufactured or intended for use or resale as on line control equipment in hazardous environments requiring fail - safe performance, such as in the operation of nuclear facilities, aircraft navigation or communication systems, air traffic control, direct life support machines or weapons systems in which the failure of the product could lead directly to death, personal injury or severe physical or environmental damage ('High Risk Activities'). 4D Systems and its suppliers specifically disclaim any expressed or implied warranty of fitness for High Risk Activities.

Use of 4D Systems' products and devices in 'High Risk Activities' and in any other application is entirely at the buyer's risk, and the buyer agrees to defend, indemnify and hold harmless 4D Systems from any and all damages, claims, suits, or expenses resulting from such use. No licenses are conveyed, implicitly or otherwise, under any 4D Systems intellectual property rights.