



TMS-SCE

TE Internal #: 3133610001

Ladder, Military, 3:1, Black, 1 Markers per Sleeve, 50 mm [2 in]

Length, 9.53 mm [.375 in] Expanded Inside, Printable Tubing

[View on TE.com >](#)

Identification & Labeling > Printable Tubing > TMS-SCE Military Grade Sleeves



Printable Tubing Type: **Ladder**

Printable Tubing Grade: **Military**

Shrink Ratio: **3:1**

Primary Product Color: **Black**

Markers per Sleeve: **1**

[All TMS-SCE Military Grade Sleeves \(147\)](#)

Features

Product Type Features

Printable Tubing Type	Ladder
Printable Tubing Grade	Military

Body Features

Shrink Ratio	3:1
Primary Product Color	Black
Markers per Sleeve	1

Dimensions

Product Length	50 mm[2 in]
Expanded Inside Diameter (Min)	9.53 mm[.375 in]
Recovered Inside Diameter (Max)	3.18 mm[.125 in]
Compatible Cable Diameter Range	3.4 – 8.1 mm[.137 – .32 in]

Usage Conditions

Operating Temperature Range	-55 – 135 °C[-67 – 275 °F]
-----------------------------	----------------------------

Printer/Label Features

Printer Technology	Thermal Transfer
--------------------	------------------

Packaging Features

Packaging Quantity	250
--------------------	-----



Product Compliance

For compliance documentation, visit the product page on TE.com>

EU RoHS Directive 2011/65/EU	Compliant
EU ELV Directive 2000/53/EC	Compliant
China RoHS 2 Directive MIIT Order No 32, 2016	No Restricted Materials Above Threshold
EU REACH Regulation (EC) No. 1907/2006	Current ECHA Candidate List: JAN 2025 (247) Candidate List Declared Against: JAN 2025 (247) Does not contain REACH SVHC
Halogen Content	Not Low Halogen - contains Br or Cl > 900 ppm.
Solder Process Capability	Not applicable for solder process capability

Product Compliance Disclaimer

This information is provided based on reasonable inquiry of our suppliers and represents our current actual knowledge based on the information they provided. This information is subject to change. The part numbers that TE has identified as EU RoHS compliant have a maximum concentration of 0.1% by weight in homogenous materials for lead, hexavalent chromium, mercury, PBB, PBDE, DBP, BBP, DEHP, DIBP, and 0.01% for cadmium, or qualify for an exemption to these limits as defined in the Annexes of Directive 2011/65/EU (RoHS2). Finished electrical and electronic equipment products will be CE marked as required by Directive 2011/65/EU. Components may not be CE marked. Additionally, the part numbers that TE has identified as EU ELV compliant have a maximum concentration of 0.1% by weight in homogenous materials for lead, hexavalent chromium, and mercury, and 0.01% for cadmium, or qualify for an exemption to these limits as defined in the Annexes of Directive 2000/53/EC (ELV). Regarding the REACH Regulation, the information TE provides on SVHC in articles for this part number is based on the latest European Chemicals Agency (ECHA) 'Guidance on requirements for substances in articles' posted at this URL: <https://echa.europa.eu/guidance-documents/guidance-on-reach>

Compatible Parts

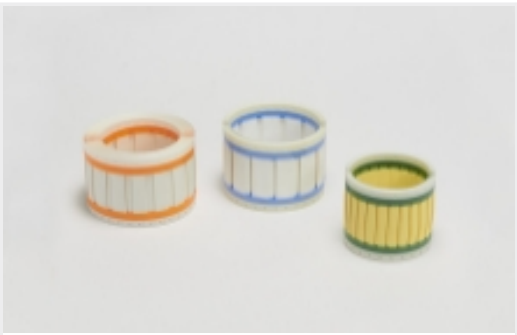
TE Part # 1-2186500-1
T3212-PRINTER

TE Part # 1-2186502-1
T3224-PRINTER

TE Part # 1-2186503-1
T3224-SWARE-PRINTER

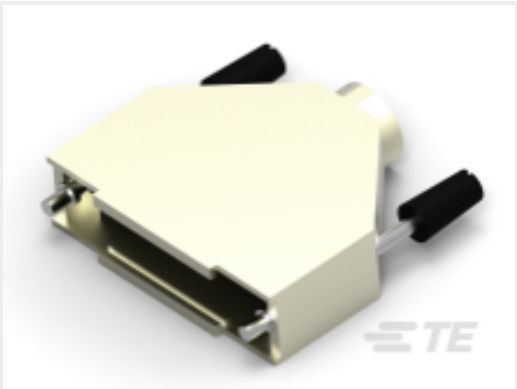
TE Part # 1-2186501-1
T3212-SWARE-PRINTER

Also in the Series | TMS-SCE

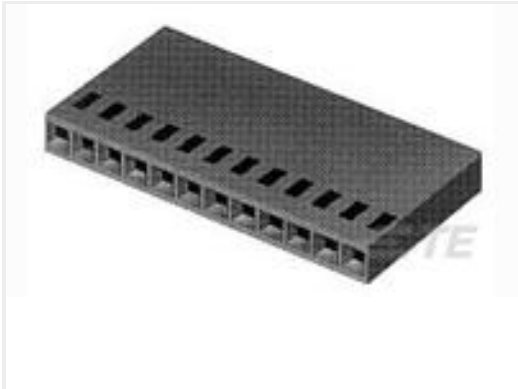


[Printable Tubing\(147\)](#)

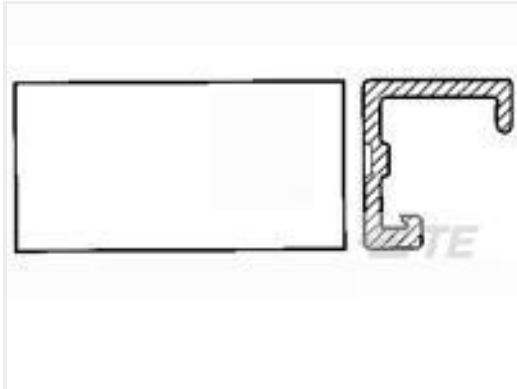
Customers Also Bought



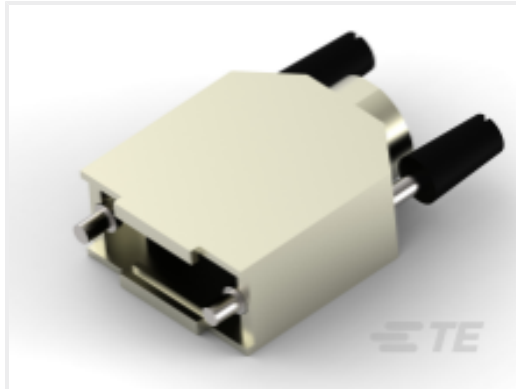
TE Part #5-1478762-3
[Metal backshell 25 way Top Ent](#)



TE Part #87499-9
[05 MODIV HSG SR MRKD .100CL](#)



TE Part #640550-7
[07P MTA100 COVER](#)



TE Part #5-1478762-1
[Metal backshell 9 way Top Entry-KIT](#)



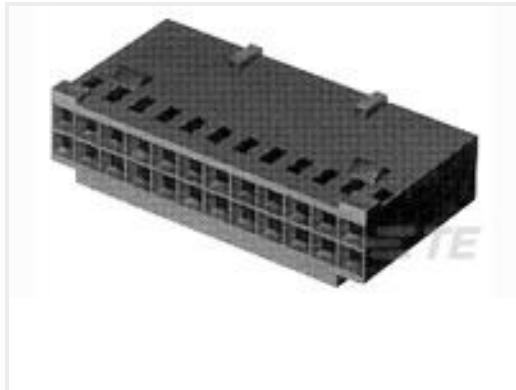
TE Part #34124
[TERMINAL,SOLIS R 16-14 1/4](#)



TE Part #1757819-8
[AMPLIMITE,ASY,PLUG,STD,109,ZN,3, CT](#)



TE Part #3-643813-7
[07P MTA100 CONN ASSY POL RIB](#)



TE Part #87631-8
[12 MODIV HSG DR MKRD .100 POL](#)

TE Part #6973470001
[TMS-SCE-1/4-2.0-0](#)

TE Part #6727770001
[TMS-SCE-1/2-2.0-0](#)

Documents

Product Drawings

[TMS-SCE-3/8-2.0-0](#)

English

Datasheets & Catalog Pages

[TMS-SCE Heat Shrinkable Sleeves](#)

English

Product Specifications



Product Specification

English

IDENTIFCATION PRINTER PRODUCT RIBBON MATRIX

English

Instruction Sheets

Instruction Sheet (non U.S.)

English