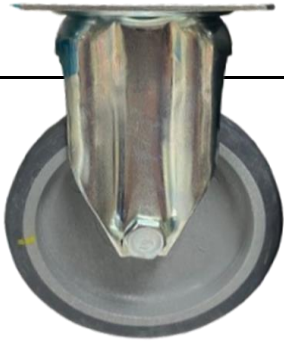


## Description

CONDUCTIVE CASTOR WITH TOP PLATE, GREY RUBBER 100MM

### Fixed

DF3BA100-272L



### Part Number

#### Swivel

DP3BA100-272L

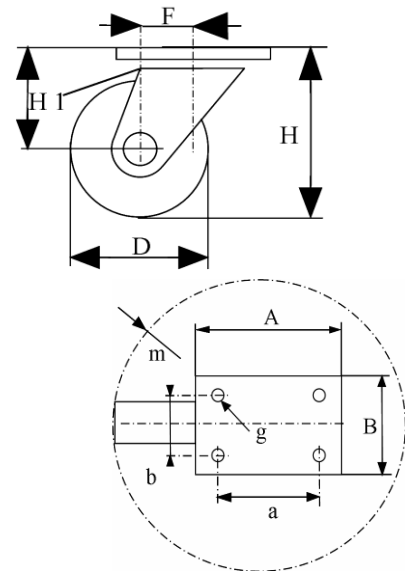


#### Swivel and brake

DP3BD100-272L



	Fixed	Swivel	Swivel+brake
Wheel Diameter ØD	100 mm		
Overall Height H	134 mm ±1		
Size of plate A X B	76 x 70 mm±1		
Plate hole centres a x b	60 x 50 mm±0,3		
Plate hole	8,3 mm		
Offset F ±1	\	36 mm	36 mm
Width of Tread	29 mm±0,5		
Hardness of tread	shore A ± 93		
Load capacity	80 Kg		
Weight	0,38 kg	0,46 kg	0,51 kg
Temperature	- 5 / + 50 °C		



### Castor Assembly :

Zinc-plated steel. Swivel on two rows of balls.  
Fastening by top plate.  
Total lock. Plastic pedal.

### Wheel :

Light grey polypropylene Wheel centre made from electroconductive materials.  
Tread : Dark grey Thermoplastic tyre made from electroconductive materials.  
Plain bearing.

### Features :

Low starting effort.  
Bonded Rubber, non marking.  
Protects sensitive goods and users from electric shocks (electrostatic discharges).  
Conductive casters compliant with ISO 22877.  
Electrical resistance < 100000 ohms.  
For use on trolleys or sensitive devices in laboratories, medical units, hospitals, electrical and electronic factories, explosion hazard areas....