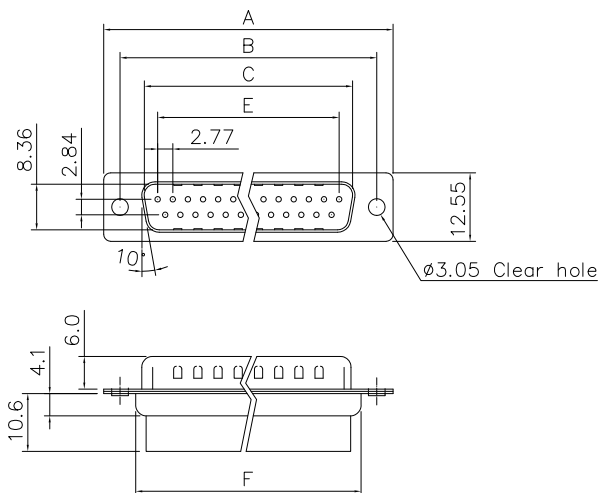


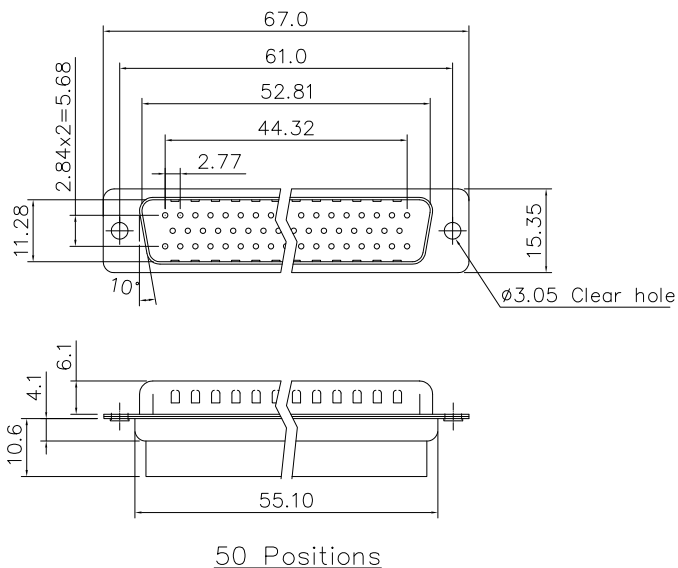
This document is the property of Amphenol Corporation and is delivered on the express condition that it is not to be disclosed, reproduced or used, in whole or in part, for manufacture or sale by anyone other than Amphenol Corporation without its prior consent, & that no right is granted to disclose or to use any information in this document.

# Customer Drawing



Dimensions

Positions	A	B	C	E	F
9	30.81	24.99	16.92	11.08	19.20
15	39.20	33.30	25.25	19.39	27.70
25	53.05	47.04	38.96	33.24	41.10
37	69.40	63.50	55.42	49.86	57.30



50 Positions

## REVISIONS

SYM	ECN	DESCRIPTION	DATE	APPROVED
1	HK--	First Release Drawing	01/04/08	IP
2	HK--	Update the Drawing	07/15/10	IP
3	HK--	Update the Drawing	05/24/13	IP
4	HK--	Update the Drawing	06/19/13	IP
5	HK--	Add one dimension	10/28/14	IP
6	HK--	Add retention force	05/12/15	IP

## D-SUB TECHNICAL DATA

SHELL : Steel, 100u" Tin over 50u" min Nickel over 50u" min Copper

BODY : Front housing: PBT, UL94V-0, Color Black  
Back housing: PA66, UL94V-0, Color Black

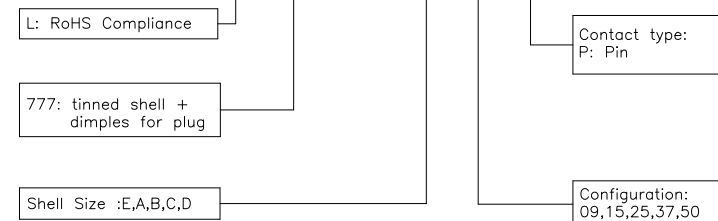
ELECTRICAL : Withstanding Voltage >1000 V RMS  
Insulation resistance >1000 M Ohms

MECHANICAL : Terminal retention force: 2.27kg Min.

MARKING : Amphenol Logo

## PRODUCT CODE

**L 777 RR X XX P**



UNLESS OTHERWISE SPECIFIED TOLERANCES		APPROVAL	DATE
U.S.	METRIC	DRAWN	DATE
.X +/-	0.50	Felix Liu	05/12/15
.XX +/-	0.30	CHECKED	
.XXX +/-	0.20	Tony Tang	05/12/15
FRACTIONS +/-			
ANGLES +/-	5'		
FOR MATERIALS AND FINISHES SEE NOTES		DRAWING FILE :	
REMOVE SHARP EDGES		ANGLE OF PROJECTION	
DIMENSIONS			
U.S.	INCHES		
METRIC	MM		

Amphenol		
Amphenol East Asia Limited		
TITLE Stamped and formed contact,RR series		
SIZE	DRAWING NO.	REV.
A4	L777RRXXXP	6
SCALE	NONE	SHEET 1 OF 1