



ENGLISH

Datasheet

## RS Pro 1m Male SCSI V to Male SCSI II SCSI Cable Assembly, Thumbscrew

RS Stock No: 436-5339



### Product Details

RS Pro cable assembly has a male SCSI V connector on end and a male SCSI II connector on the other end. This 1 m long cable assembly is fully mounted and shielded to resist RFI/EMI interference. It offers secure installation using thumbscrew.

### Features and Benefits

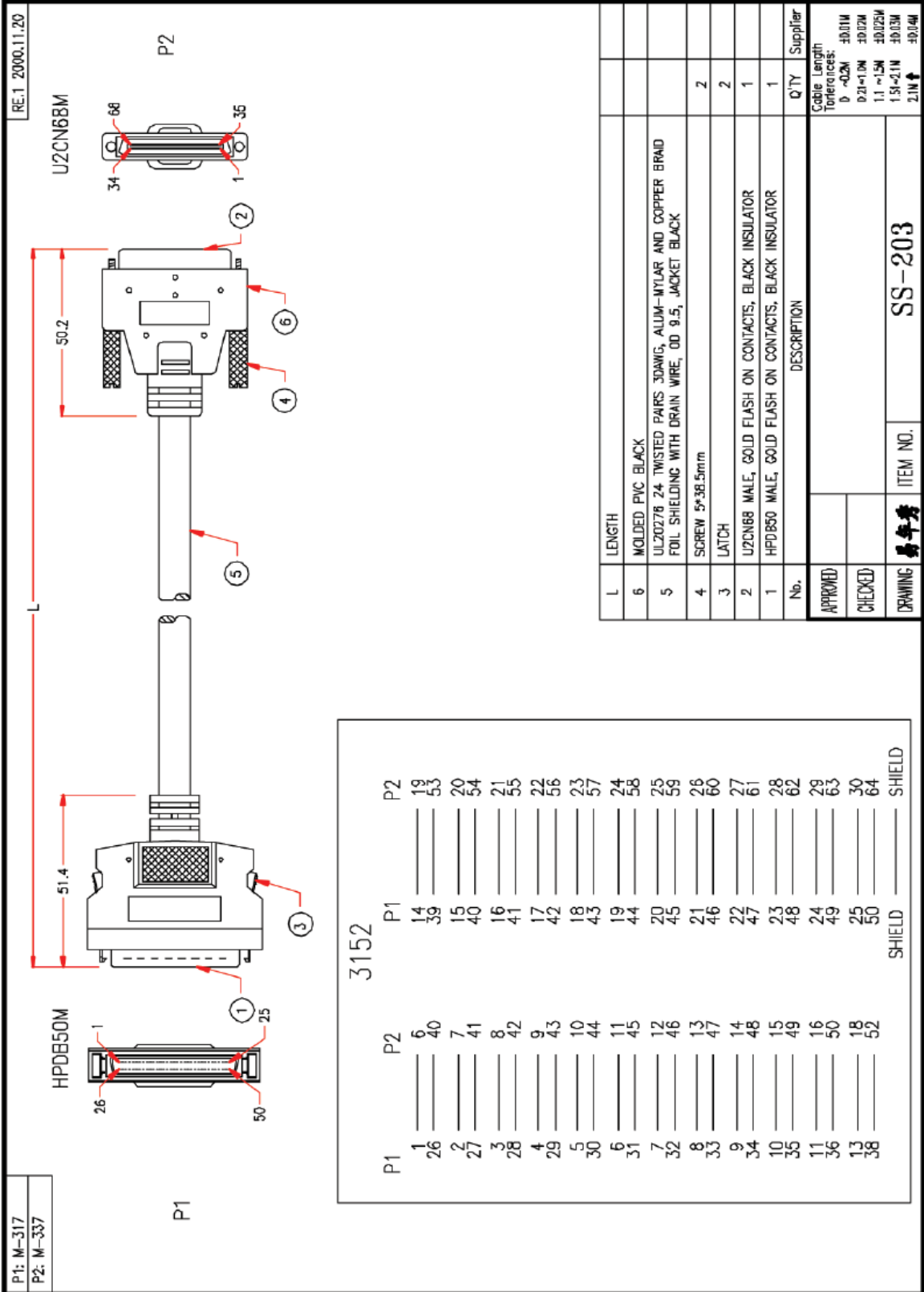
- Fully moulded and 66% shielded
- Thumbscrew security
- Male/male
- 6.6 m long



ENGLISH

### Specifications:

Cable Type	SCSI Cable Assembly
Connector A Gender	Male
Connector A Type	SCSI V
Connector A	Male SCSI V
Connector B Gender	Male
Connector B Type	SCSI II
Connector B	Male SCSI II
Fastener Type	Thumb Screw
Length	1 m
Outer Sheath Material	PVC
Sheath Colour	Black



P1: M-317  
P2: M-337

RE.1 2000.11.20

3152		P1	P2	SHIELD
1	6	14	19	
26	40	39	53	
2	7	15	20	
27	41	40	54	
3	8	16	21	
28	42	41	55	
4	9	17	22	
29	43	42	56	
5	10	18	23	
30	44	43	57	
6	11	19	24	
31	45	44	58	
7	12	20	25	
32	46	45	59	
8	13	21	26	
33	47	46	60	
9	14	22	27	
34	48	47	61	
10	15	23	28	
35	49	48	62	
11	16	24	29	
36	50	49	63	
13	18	25	30	
38	52	50	64	
		SHIELD	SHIELD	

DRAWING 3152 ITEM NO. SS-203