


1.0 Products covered by this Test Summary

Model Number	Description	Notes
APCRBC173-LI	APC Lithium Ion Replacement Battery Cartridge	

		
<p>Battery pack is a manufactured article consisting of a plastic and metal sealed case containing electronics and cylindrical lithium- ion battery/cells. Solid.</p>		

1.1 Batteries in Products

#	Model Number	Description	Notes
1	APCRBC173-LI, 911-7011,UBP56A09AC1, AU1803	Li-Ion Battery Pack ; 50.4 VDC; 260 Wh	

1.2 Cells in Batteries

#	Model Number	Description	Notes
2	US18650VTC4	Lithium-ion Cell; 3.6Vdc ; 2100mAh	

2.0 Manufacturers of Cells/Batteries

2.1 Battery Maker #1

Name	Address	Phone	Website
STL Technology Co., Ltd.	NO.1, WEST 15 TH STREET CIANHJEN DIST.KAOHSIUNG, TAIWAN	+886-7-841-1501	www.stl-tech.com
C-TECH. United Corporation	5F., No.669, Zhongzheng Road, Xinzhuang District, New Taipei City 24257, Taiwan	886-2-2901-6600	ww.c-techone.com/

2.1 Cell Maker #2

Name	Address	Phone	Website
Tohoku Murata Manufacturing Co., Ltd.	1-1 Shimosugishita, Takakura, Hiwada-machi, Koriyama-shi, Fukushima, 963-0531 Japan	+81-24-955-7770	www.murata.com

3.0 Test Laboratories of Cells / Batteries

3.1 Test for Battery #1

Name		Address	Phone	Website
STL Technology Co., Ltd.		NO.1, WEST 15 TH STREET CIANJHEN DIST.KAOHSIUNG, TAIWAN	+886-7-841-1501	www.stl-tech.com
Test ID No:	STL-2004010			
Date:	2021-06-01			
NOTES: The samples has passed the test items of Manual of Tests and Criteria (ST/SG/AC.10/11/Rev.7/Amend.1), Part III sub-section 38.3.				

	Lithium Ion Cell
XXX	Lithium Ion Battery

	Lithium Metal Cell
	Lithium Metal Battery

Name		Address	Phone	Website
Shenzhen CCJC Technology Co., Ltd.		1/F., Building B, Xinbaoyi Industry and Trade Building, Houting, Shajing, Bao'an District, Shenzhen, Guangdong, China	+86-755-23707853	www.ccjctek.com
Test ID No:	CCJC2020A2408S1			
Date:	2020-06-29			
NOTES: The samples has passed the test items of Manual of Tests and Criteria (ST/SG/AC.10/11/Rev.6/Amend.1). Part III sub-section 38.3.				

3.1 Test for Cell #2

Name		Address	Phone	Website
N/A		N/A	N/A	N/A
Test ID No:	N/A			
Date:	N/A			

XXX	Lithium Ion Cell
	Lithium Ion Battery

	Lithium Metal Cell
	Lithium Metal Battery

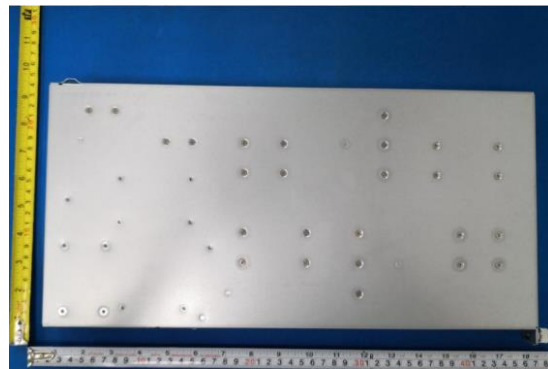
4.0 Parameters of Cells/Batteries

4.1 Battery #1

Parameters	Cell	Battery
Mass (Kg)	0.045	2.52
Lithium ion Indicate watt-hour rating (Wh)	7.6	260
Lithium metal Indicate lithium metal content in gram (g)	N/A	N/A

Physical Description of Cells / Batteries

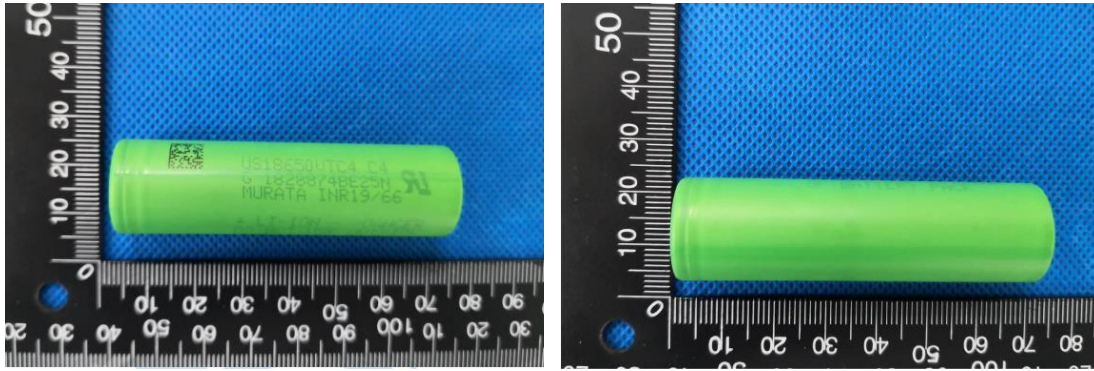
APCRBC173-LI, 911-7011,UBP56A09AC1, AU1803



APCRBC173-LI, 911-7011,UBP56A09AC1, AU1803 Label



Cell (Cell #2)



5.0 List of tests conducted and results

Test	Pass	Fail	N/A
T1 – Altitude simulation	X		
T2 – Thermal Tests	X		
T3 – Vibration	X		
T4 – Shock	X		
T5 – External Short Circuit	X		
T6 – Impact	X		
T7 – Overcharge	X		
T8 – Forced Discharge	X		

6.0 UN38.3 Test Conformation for the Cells inside the battery:

	Cell UN 38.3 Test Confirmed (Yes or No)
When no separate document for the cells is provided, this confirms that the cells inside the battery have successfully passed the UN 38.3 test. In this case under section 5.0 the T7 and T8 must be marked as “passed” and here under section 6.0 “Cell UN 38.3 Test confirmed” needs to be Yes.	YES

7.0 Reference to assembled battery testing requirements

	Not Applicable
	XXX

8.0 Reference to the edition on the Manual of Tests and Criteria applied

ST/SG/AC.10/11/Rev.6/Amend.1 and ST/SG/AC.10/11/Rev.7/Amend.1 Recommendations on the Transport of Dangerous Goods: Manual of Tests and Criteria, Part III, Sub-Section 38.3 Lithium metal and lithium ion batteries United Nations
--

9.0 Manufacture of the cell / battery is in accordance with quality management system as required by the regulations:

Schneider Electric certifies that all articles described in this Test Survey are in compliance with all applicable Schneider Electric Product Specifications, Manufacturing Processes, Quality Control Testing, Quality Plan per ISO9001: 2015, and Environmental guidelines.

10.0 Certification

Company: Schneider Electric – Secure Power Division
Signature:



Authorized representative:

Raymond P. Lizotte, Jr.
Director, Sustainability Office
EMAIL: raymond.lizotte@SE.com
Phone: +1 978-691-1468


Date of compilation: October 06, 2023
Place of expertise: Schneider Electric Andover R&D Center
Andover, MA 01810
United States



Company Seal

11.0 Attachments

Images of Test Report Identifiers

 新盛力科技股份有限公司
STL Technology Co., Ltd.

Your First Choice in Portable Power

Report Number: STL-2004010

Lithium Battery UN38.3

Test Report

1: SAMPLE DESCRIPTION
Sample Name : Rechargeable Lithium-ion Battery
Brand Name : APC by Schneider Electric
Model Name : APCRBC173-LI
Nominal Voltage : 50.4V
Rated Capacity : 5.16Ah / 260Wh

2: STANDARD
RECOMMENDATIONS ON TRANSPORT OF DANGEROUS GOODS, MANUAL OF TEST AND CRITERIA, SECTION 38.3 LITHIUM BATTERIES (ST/SG/AC.10/11/Rev.7)


3: TEST ITEM
1. Altitude simulation 2. Thermal test
3. Vibration 4. Shock
5. External short circuit 6. Impact (Cell only)
7. Overcharge 8. Forced discharge (Cell only)

4: CONCLUSION

ITEM	SAMPLE NUMBER	STANDARD	CONCLUSION
Altitude simulation	1~8	UN38.3-T1	Pass
Thermal test		UN38.3-T2	Pass
Vibration		UN38.3-T3	Pass
Shock		UN38.3-T4	Pass
External short circuit		UN38.3-T5	Pass
Impact	-----	UN38.3-T6	ND
Overcharge	9~16	UN38.3-T7	Pass
Forced discharge	-----	UN38.3-T8	ND

The submitted samples were complied with the stated requirements of ST/SG/AC.10/11/Rev.7

Compiled by: **Chingyueh Huang** Checked by: **CW Su** Approved by: **Wenhshing Chang**

 诚测检测

Page 1 of 2

Report No.: CCJC2020A2408S1

UN38.3 试验概要

UN38.3 Test Summary

单位信息 Company information			
委托方 Client	西勝國際股份有限公司 C-TECH UNITED CORP		
地址 Address	新北市新莊區中正路 663, 665 號 5 樓 5F, NO.663, 665, Zhongzheng Rd., Xinzhuang District, New Taipei City, Taiwan		
联系方式 Contact information	+886-2-2901-6600	Tiffany.Chen@c- techone.com	www.c-techone.com
制造商 Manufacturer	重慶西勝電子科技有限公司 Chongqing C-Tech Technology Co., Ltd.		
地址 Address	中國重慶市永川區興龍大道 2130 號 2 樓 2nd Building, No. 2130, Xinglong Avenue, Yongchuan District, Chongqing, China		
联系方式 Contact information	+88-023-4958-8388	june.liu@c-techone.com	www.c-techone.com
生产厂 Factory	重慶西勝電子科技有限公司 Chongqing C-Tech Technology Co., Ltd.		
地址 Address	中國重慶市永川區興龍大道 2130 號 2 樓 2nd Building, No. 2130, Xinglong Avenue, Yongchuan District, Chongqing, China		
联系方式 Contact information	+88-023-4958-8388	june.liu@c-techone.com	www.c-techone.com
测试实验室 Test laboratory	深圳誠測檢測技術有限公司 Shenzhen CCJC Technology Co., Ltd.		
地址 Address	廣東省深圳市寶安區沙井街道后亭社區第三工業區新寶益工貿大廈 B 幢 1 樓 A 座 1/F., Building B, Xinbaoyi Industry and Trade Building, Houting, Shajing, Bao'an District, Shenzhen, Guangdong, China		
联系方式 Contact information	+86-755-23707853	sales@ccjctek.com	www.ccjctek.com
电池信息 Battery information			
名称 Name	可充式锂离子电池组 Rechargeable Li-Ion Battery Pack	商标 Brand	/
型号 Model	911-7011	原始测试型号 Original tested model	/
标称电压 Nominal voltage	50.4V	容量 Rated Capacity	5.16Ah, 260Wh
描述 Description	锂离子电池组 Li-Ion Battery	锂含量 Lithium Content	/
质量 Mass	5.55Kg	外观 Appearance	银色近长方体电池 Silver almost cuboid battery