



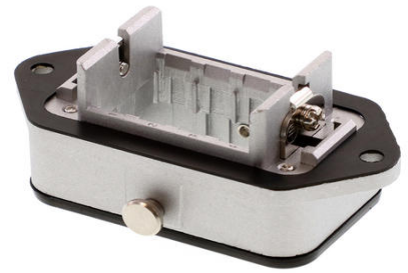
**Part Number :** [5008090000](#)

**Product Description :** Mini-HMC Shielded Panel-Mount I/O Receptacle Shell, 40 Circuits, 8 Rows, Polarizing Key Type A

**Series Number :** 500809

**Status :** Obsolete

**Product Category :** I/O Connectors



---

## Documents & Resources

[5008090000 stp.zip](#)

### Specifications

[AS-500811-001-001.pdf](#)

[PS-500810-001-001.pdf](#)

---

## Product Environment Compliance

### Compliance

GADSL/IMDS	Product not active
China RoHS	Product not active
EU ELV	Product not active
Low-Halogen Status	Product not active
REACH SVHC	Product not active
EU RoHS	Product not active

### Compliance Statements

- EU RoHS
- REACH SVHC
- Low-Halogen

### Industry Documents

- IPC 1752A Class C
- IPC 1752A Class D
- Molex Product Compliance Declaration
- IEC-62474
- chemSHERPA (xml)

### Substances of Interest

- PFAS

EU RoHS Certificate of Compliance

Additional Product Compliance Information

---

## Part Details

### General

Status	Obsolete
Category	I/O Connectors
Series	500809
Description	Mini-HMC Shielded Panel-Mount I/O Receptacle Shell, 40 Circuits, 8 Rows, Polarizing Key Type A
Application	Panel-Mount, Wire-to-Wire
Component Type	Panel Mount Shell
Product Name	Mini-HMC
Type	N/A
UPC	756054862551

### Electrical

Current - Maximum per Contact	2.5A
Shielded	Yes
Shield Type	Full Shield
Voltage - Maximum	250V AC (RMS)/DC

### Physical

Circuits (Loaded)	40
Circuits (maximum)	40
Durability (mating cycles max)	50
Gender	Receptacle
Keying to Mating Part	Yes
Lock to Mating Part	Yes
Material - Metal	Brass
Material - Plating Mating	Copper
Material - Resin	Polyester
Net Weight	70254.502/mg

Orientation	Vertical
Packaging Type	Tray
Panel Mount	Screws
PCB Locator	No
Pitch - Mating Interface	N/A
Polarized to Mating Part	Yes
Polarized to PCB	No
Temperature Range - Operating	-40° to +105°C
Termination Interface Style	Surface Mount
Waterproof / Dustproof	No

## Mates With / Use With

### Use with Part(s)

Description	Part Number
CRC Signal Female Terminal, Lead-Free, Gold (Au) Plating, 28-24 AWG, Reel	<u>561208428</u>
CRC Signal Female Terminal, Lead-Free, Gold (Au) Plating, 28-24 AWG, Bag	<u>561208528</u>
CRC Signal Female Terminal, Lead-Free, Chain, Gold (Au) Plating	<u>561218428</u>