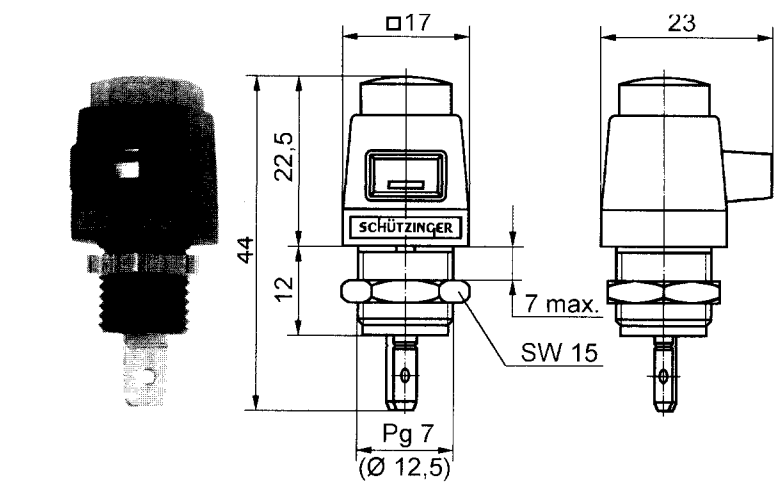


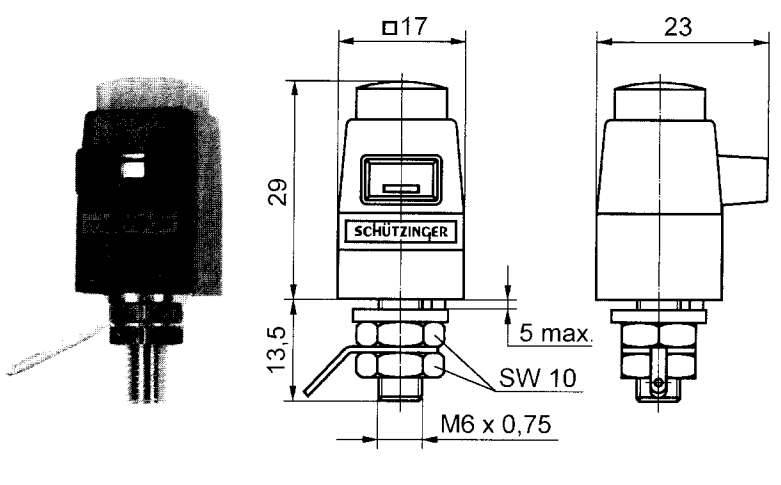
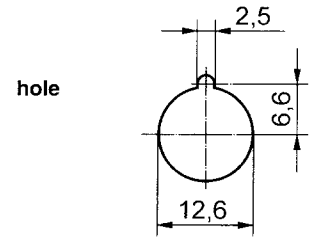
ø 4 mm - Safety - Programme  
test probes and quick-release terminals



**Safety quick-release terminal**  
- fully insulated

**order no. ESD 798 / .. (colour)**  
- contact parts **nickel-plated**  
- insulation PA 6.6 (Polyamid)  
- panel thickness 0.8 mm - 7 mm

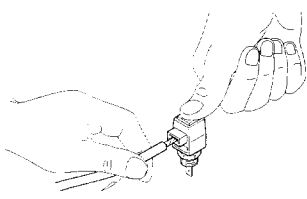
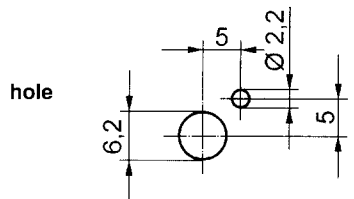
colours: see table



**Safety quick-release terminal**  
fitting not insulated

**order no. SDK 801 / .. (colour)**  
- contact parts **nickel-plated**  
- insulation PA 6.6 (Polyamid)  
- panel thickness 0.8 mm - 5 mm

colours: see table



**Functional description:**  
Wires and strands are connected between the spring jaws by pressing on the head of the terminal post.  
Every quick-release terminal has an insertion window. The window size is approx. 8 mm x 4 m. A strong compression spring guarantees good contact. The pressure of the compression spring amounts to approx. 19 N. The quick-release terminals are particularly suitable for quick connection and testing of series appliances.

General information			Technical data				
order no.	max. torque for the nuts	colours	terminal	transition resistance	rated voltage	rated current	operating temperature
ESD 798 / ..(colour) contact parts nickel-plated	85 Ncm	black red	FSH 2,8x0,5 or soldering	< 3 mΩ	300 V CAT II	16 A	- 25 °C ... + 90 °C
SDK 801 / ..(colour) contact parts nickel-plated	120 Ncm	black red	soldering loop or cable lug	< 3 mΩ	300 V CAT II	16 A	- 25 °C ... + 90 °C

other colours and springs on request

ø 4 safety