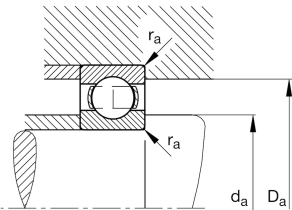
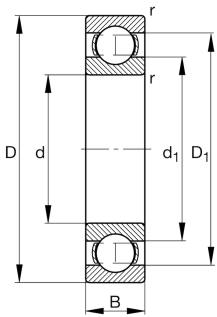


**FAG****6228**

Deep groove ball bearing

Deep groove ball bearing 62, single row, steel sheet metal cage

## Technical information



## Your current product variant

Sealing	Without	Not sealed
Cage	JN	Steel sheet metal
Tolerance class	PN	Normal (PN)
Dimensional / heat stabilization	S1	Rings dimensional stabilized up to 200°
Lubricant	Without	Bearing not greased
Radial internal clearance	CN (Group N)	Normal internal clearance
Bore type	Z	Cylindrical

## Main Dimensions &amp; Performance Data

d	140 mm	Bore diameter
D	250 mm	Outside diameter
B	42 mm	Width
$C_r$	188,000 N	Basic dynamic load rating, radial
$C_{0r}$	165,000 N	Basic static load rating, radial
$C_{ur}$	8,400 N	Fatigue load limit, radial
$n_G$	3,600 1/min	Limiting speed
$n_{gr}$	3,600 1/min	Reference speed
$\approx m$	7.7 kg	Weight



### Mounting dimensions

$d_{a \min}$	154 mm	Minimum diameter shaft shoulder
$D_{a \max}$	236 mm	Maximum diameter of housing shoulder
$r_{a \max}$	2.5 mm	Maximum fillet radius

### Dimensions

$r_{\min}$	3 mm	Minimum chamfer dimension
$D_1$	213.8 mm	Shoulder diameter outer ring
$d_1$	175.9 mm	Shoulder diameter inner ring

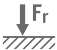
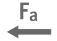




### Temperature range

$T_{\min}$	-30 °C	Operating temperature min.
$T_{\max}$	200 °C	Operating temperature max.

### Calculation factors

$f_0$	14.9	Calculation factor
-------	------	--------------------

### Characteristics

-  Radial load
-  Axial load in one direction
-  Axial load in two directions
-  Grease Lubrication
-  Oil Lubrication
-  Not sealed