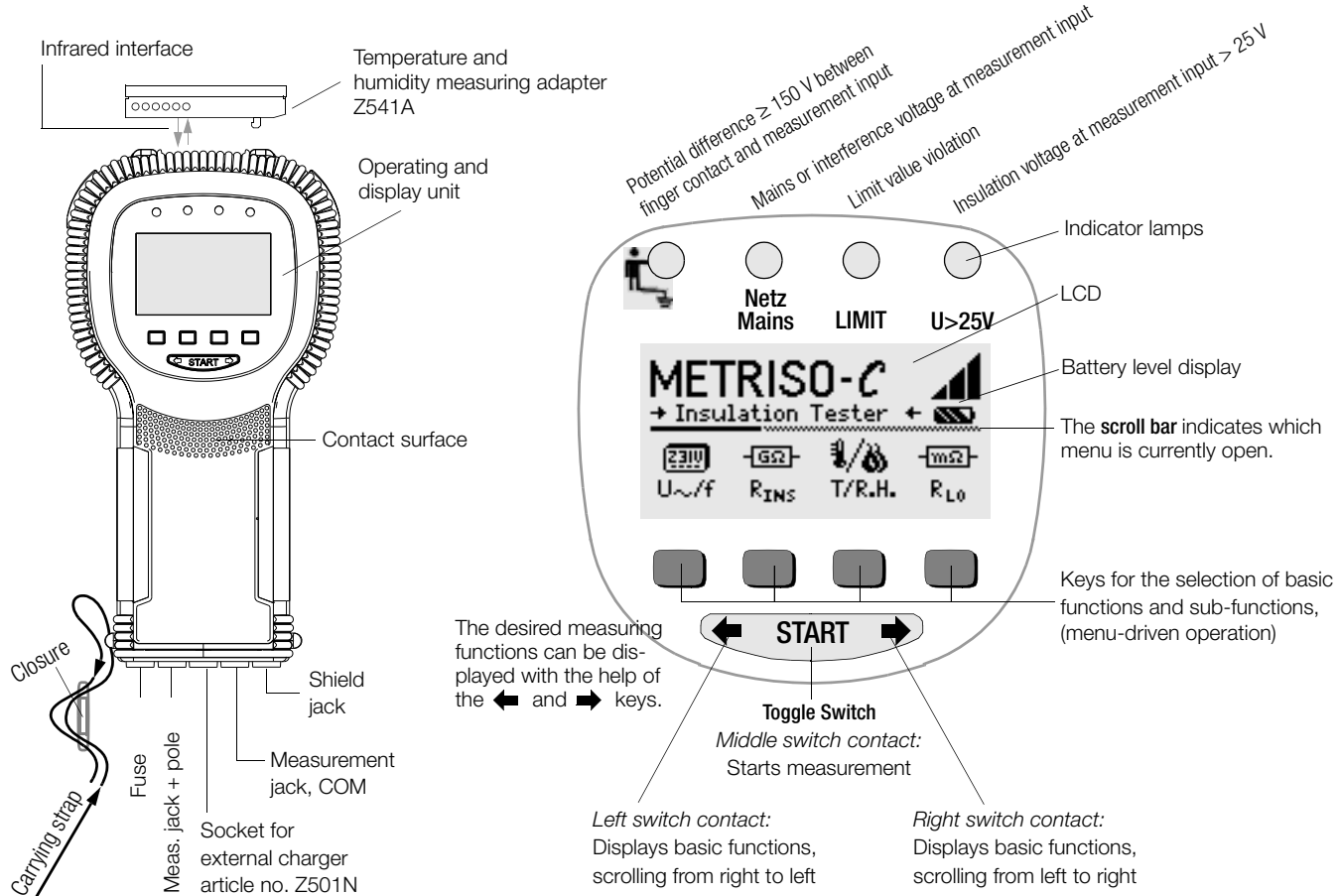


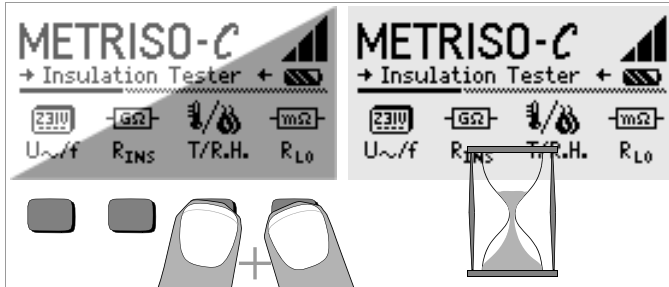
METRISO[®] C-GB *int.*

Insulation, Resistance and Contact Current Measuring Instrument

3-349-087-03
12/11.08







LCD after Switching on the Instrument

Please proceed as follows if the LCD display is not legible, i.e. too bright or too dark, after switching on the test instrument:

- 1 Simultaneously press the two right-hand keys to delete the memory which might be faulty.
- 2 Wait a few seconds to allow the display to be updated.
- 3 Readjust the contrast if necessary, see page 8.

Instructions for the Plug-on of the Following Accessory Adapters

- Interface converter IrDa-USB (Z501J)
 - Temperature and humidity measuring adapter (Z541A)
- ⇒ Connect the adapter with the IR interface of the test instrument, see drawing on page 2: Insert the guide rail of the adapter in the opening provided on top of the tester so that the adapter is located in the middle of the housing, resting on the two rubber cushions. Then push the adapter down to ensure that it is safely fastened.

PC software WinProfi for communication with METRISO®C

The PS3 CD-ROM includes the software WinProfi with the following content and functions:

- up-to-date test instrument software
 - for loading another language
 - for loading software version updates,
- Exchange of measured data between test instrument and PC
- Preparation, print-out and filing of test reports at the PC

The following interface converter is required for communication between test instrument and PC:

- IrDa-USB Converter (Z501J): IrDa (tester) – USB (PC)

Data Backup

Measurement data and electrical circuit assignments can be safely stored in a RAM as long as the associated battery supplies the required voltage. We advise you to regularly transmit your stored data to a PC in order to prevent potential loss of data in the test instrument. We assume no responsibility for any data loss.

For data processing and management we recommend the following PC software programs:

- PS3 (documentation, management, report generation and monitoring of deadlines)
- PC.doc-WORD/EXCEL (report and list generation)
- PC.doc-ACCESS (test data management)

Contents	Page
1 Applications	5
2 Safety Features and Precautions	5
3 Initial Start-Up	6
3.1 Battery Test	6
3.2 Installing and Replacing Batteries	6
3.3 User Guide in a Different Language	6
3.4 Selecting a Menu and Configuring Basic Settings	6
3.5 Downloading a Software Update, Managing Report Data	9
4 General Operation	12
4.1 Automatic Settings, Monitoring and Shutdown	12
4.2 Measurement Value Display	12
4.3 Online Help	12
5 Measuring Insulation Resistance	13
5.1 Insulation Measurement with Adjustable Test Voltage	14
5.2 Measurement with Rising Test Current	14
5.3 Setting the Limit Value	14
6 Database Functions	15
6.1 Creating a Data Record – Data Function	15
6.2 Saving Measurement Values – STORE Function	16
6.3 Querying Data Records – View Function	16
6.3.1 Deleting a Data Record from within a Memory Address – View Function	17
6.3.2 Deleting a Memory Address – Data Function	17
6.3.3 Delete All Memory Addresses – Data Function	18
6.4 Print Function	18
7 Measuring Alternating Voltage	19
8 Measuring Temperature and Humidity with Adapter Z541A (Accessory Adapter)	19
9 Measuring Low-Value Resistance (to 100 Ω)	20
9.1 Compensation for Measurement and Extension Cables (up to 10 Ω)	21

Contents	Page
9.2 Setting the Limit Value	21
10 Measuring Contact Current	22
10.1 Setting the Limit Value	22
11 Characteristic Values	23
12 List of Abbreviations and their Meanings	25
13 Maintenance	25
13.1 Self-Test	25
13.2 Battery Operation	26
13.3 Changing the Batteries of the Temperature and Humidity Measuring Adapter Z541A	26
13.4 Fuses	26
13.5 Housing	27
14 Repair and Replacement Parts Service DKD Calibration Center* and Rental Instruments Service	27
15 Product Support	28

1 Applications

This instrument fulfills the requirements of the applicable European and national EC guidelines. We confirm this with the CE marking. The relevant declaration of conformity can be obtained from GMC-I Messtechnik GmbH.

The METRISO[®]C test instrument allows for quick and efficient testing of protective measures in accordance with DIN VDE 0100, ÖVE-EN 1 (Austria), SEV 3755 (Switzerland) and other country specific regulations. The instrument is equipped with a microprocessor and complies with IEC/EN 61557/VDE 0413.

Part 1: General requirements

Part 2: Insulation resistance measuring instruments

Part 4: Measuring instruments for the measurement of resistance at earth conductors, protective conductors and bonding conductors

as well as requirements in accordance with VDE 0701-0702:

Repair, modification and testing of electrical devices

The test instrument is especially well suited for:

- Systems installation
- Initial start-up
- Periodic testing
- Troubleshooting in electrical systems

All required measurements can be performed for approval reports (e.g. for ZVEH) with the help of a set consisting of the PROFITEST[®]C and the METRISO[®]C.

Measurement values can be transmitted to a PC for printing and archiving via the integrated IR data interface at the METRISO[®]C. This is especially important where product liability is concerned.

The following measurements and tests can be performed with the METRISO[®]C:

- Insulation resistance
- Low-value resistance
- Contact current
- Voltage and frequency
- Temperature and humidity (with accessories)

The following can also be measured with a shielded measurement cable:

- Conductivity of floor coverings for electrostatic discharge

2 Safety Features and Precautions

The METRISO[®]C electronic measuring and test instrument is manufactured and tested in accordance with safety regulations IEC/EN 61010-1/VDE 0411-1 and EN 61557. If used for its intended purpose, the safety of the operator and the instrument is assured.

Read the operating instructions carefully and thoroughly before using your instrument, and observe all instructions included therein.

The measuring and test instrument may not be used:

- If the battery compartment cover has been removed
- If external damage is apparent
- With damaged connector cables or measuring adapters
- If it no longer functions flawlessly
- After excessive stress due to transport
- After lengthy periods of storage under unfavorable conditions (e.g. humidity, dust, extreme temperatures)
- While the batteries are being charged

Meanings of Symbols on the Instrument



Warning concerning a point of danger
(Attention: observe documentation!)



Protection class II device

CAT II

Measuring category II device



9 V DC charging socket for NA102 charging adapter
(part no. Z501N)



Approval mark by VDE test authority



Indicates EC conformity



This device may not be disposed of with the trash. Further information regarding the WEEE mark can be accessed on the Internet at www.gossenmetrawatt.com under the search term 'WEEE'.

3 Initial Start-Up

3.1 Battery Test

Five battery symbol segments ranging from depleted to fully charged continuously indicate the current battery level at the main menu.

3.2 Installing and Replacing Batteries

New batteries must be installed before initial start-up, or when **only one solid segment remains in the battery symbol**.



Attention!

The instrument must be disconnected from the measuring circuit (mains) at all poles before the battery compartment is opened.

Four 1.5 V baby cells in accordance with IEC LR14 are required for operation of the METRISO®C. Use alkaline-manganese batteries only. Rechargeable NiCd or NiMH batteries can be used as well. Be absolutely sure to refer to chapter 13.2, page 26, regarding the charging cycle and the charging adapter.

Always replace the batteries in complete sets.

Dispose of batteries in an environmentally sound fashion.

- Loosen the two slotted screws at the battery compartment cover on the housing rear panel and remove the cover.
- Insert four 1.5 V baby cells making certain they are poled in accordance with the symbols. Insert the two batteries which are half covered by the housing first.
- Replace the cover and retighten the screws.



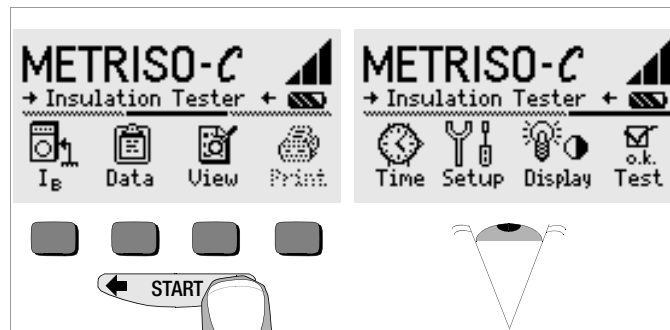
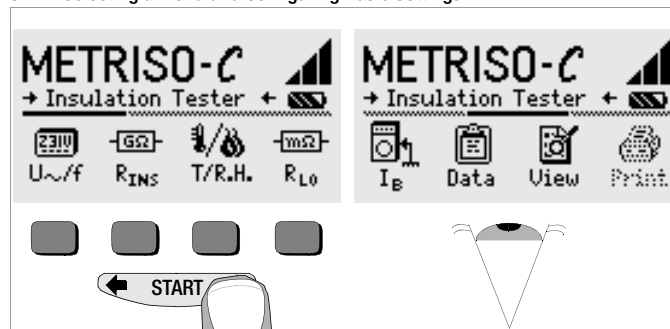
Attention!

The instrument may not be operated if the battery compartment cover has not been installed and properly tightened!

3.3 User Guide in a Different Language

By performing a software update it is possible to load another language for the user guide than the one included in the scope of supplies. Any language currently available is proposed for choice when WinProfi is being installed, see chapter 3.5.

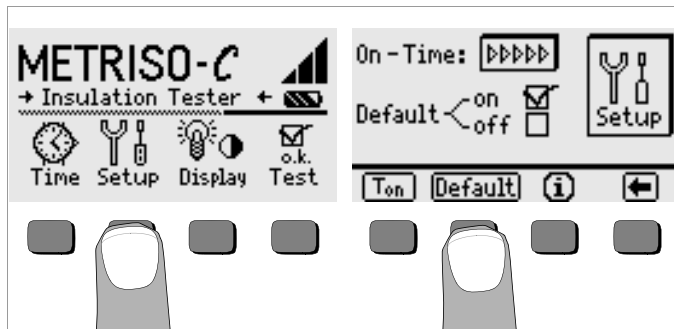
3.4 Selecting a Menu and Configuring Basic Settings



Press the ← or the → key in order to display the desired measuring function, the device settings or the database functions.

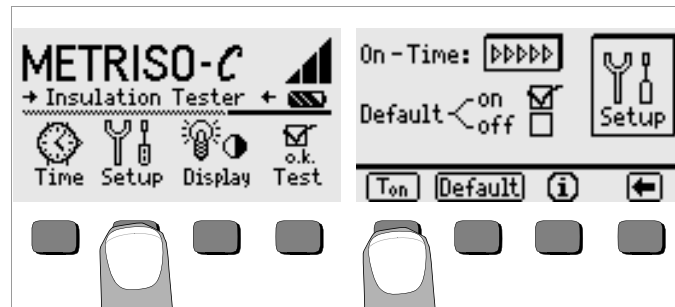
Default Settings – Last Used Settings

A selection can be made here as to whether the menus will be displayed according to the default settings, or if the last opened menu should be displayed.



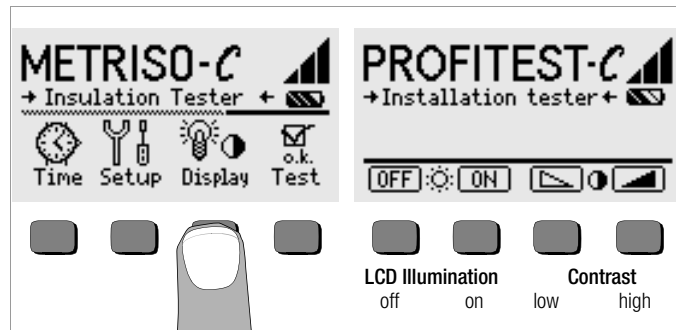
- ⇒ Activate the Setup key.
- ⇒ Press the Default key, if required:
- on** ✓ Settings such as T_{on} (= 20sec) are reset to the default settings each time the instrument is switched on.
- off** ✓ The last used settings remain when the instrument is switched on.
- ⇒ Press the key to quit the setup menu.

Setting On-Time, Manual Shutdown



- ⇒ Activate the Setup key.
- ⇒ Press the T_{on} key and then the 10sec, 20sec, 30sec or 60sec key depending upon the desired duration after which the test instrument should switch off automatically. Additional setting options can be displayed with the help of the and scroll keys. The ">>>>" setting indicates that no automatic shutdown will occur. The selected setting has a considerable influence on battery service life.
- ⇒ Press the key to quit the setup menu.

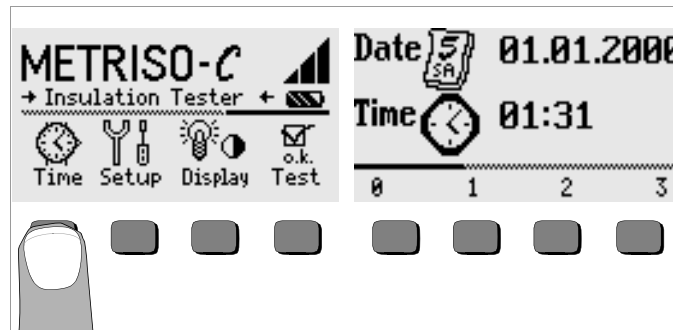
The instrument can be switched off manually by simultaneously activating the two outermost softkeys.



- Activate the Display key.
- In order to extend battery service life, display illumination can be switched off entirely.
Press the corresponding softkey to this end.

If LCD illumination is activated (= ON), it is automatically switched off several seconds after the last key has been activated in order to extend battery service life. As soon as a key is activated again, illumination is switched back on.

- Contrast can be optimized with the two keys at the far right.
- Press the **START** key to quit the setup menu. The data are saved to memory.



- Activate the Time key.
- The cursor appears at the first digit in the date. Enter the desired numeral with one of the softkeys.
Numerals which do not appear in the window can be displayed with the help of the ◀ or the ▶ key. Each time a numeral is selected, the cursor moves to the next position to the right.
- Date and time are saved as soon as the last numeral has been entered.
- Press the **START** key to quit the setup menu. The data are saved to memory.

3.5 Downloading a Software Update, Managing Report Data

If you require an updated test instrument software, it can be downloaded with the help of WinProfi PC software. The data file with the desired software version is transmitted to the test instrument via the serial interface. The previously installed language is overwritten.



Note

This software includes all of the functions required for communications between the METRISO[®]C and the PC. A description of the program is included in the online user's manual which can be accessed from WinProfi.



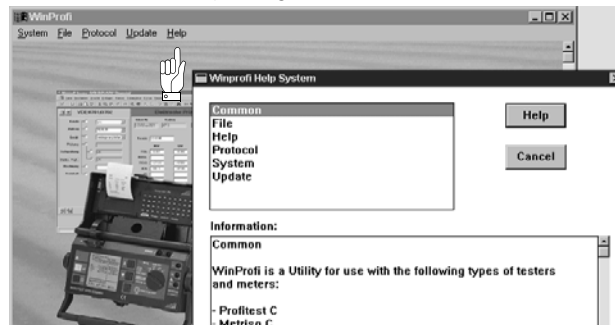
Programm WinProfi

A Install WinProfi to the PC and Start the Program

- First install the software to your PC.
Insert the CD into the CD drive, for example drive E.
Execute the file **E:\GMCDEMO**
- Click the globe icon.
- Follow the instructions which appear at the monitor.
The program is added to your START menu after installation.
- Establish a connection between your PC and the PROFITEST[®]0100S-II test instrument by using interface converter IrDa-USB.
- Start WinProfi.
- Switch on the test instrument.
- Set the on-time period of the METRISO[®]C to „>>>>>“, to give you enough time for adjusting the settings in WinProfi before the test instrument switches off again automatically, see chapter 3.3.

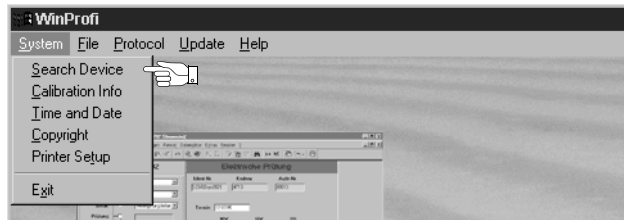
Display or print out online user's manual

The online manual contains information concerning the software which is not included in these operating instructions.



B Prerequisites for Software Update or Data Exchange

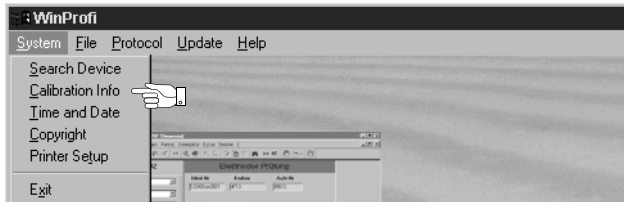
- ⇒ Find the interface to which the METRISO[®]C is connected.



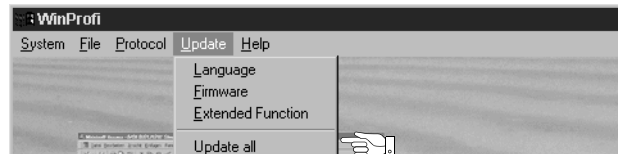
Note

Always start this function first, **before performing an update or changing report templates**. After starting this function, WinProfi loads the report files specifically necessary for the connected instrument. Due to the fact that WinProfi has been created for use with several types of test instruments, incorrect test reports may otherwise be loaded, or erroneous options may be made available.

- ⇒ Query information regarding current software version



C Transmission of a Software Update to the Test Instrument



- ⇒ PC: Select the Update All function from the Update menu. Follow the instructions which appear at the monitor.

Depending upon the utilized PC, transmission takes from 1 to 2 minutes.

The NETZ/MAINS LED of the METRISO[®]C test instrument lights up green and indicates that the instrument is ready to receive data. If the PC and the test instrument are correctly synchronized, the same LED lights up yellow. During programming sequences, the LIMIT and U>25V LEDs light up red and the NETZ/MAINS LED lights up yellow in alternating order. Upon completion of data transmission, the NETZ/MAINS LED briefly lights up green, afterwards all LEDs go out.

The message „Transmission done“ appears on the computer screen

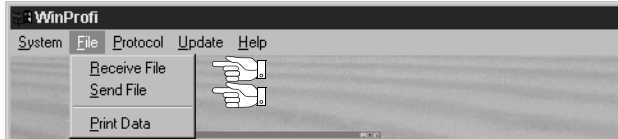


Attention!

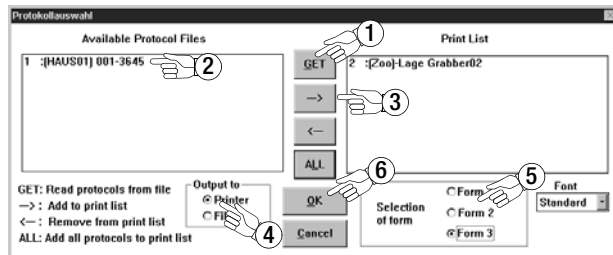
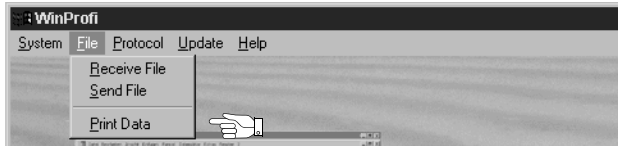
The instrument may not, under any circumstances, be switched off during transmission, nor may the connection between the instrument and the PC be interrupted!

D Managing Report Data

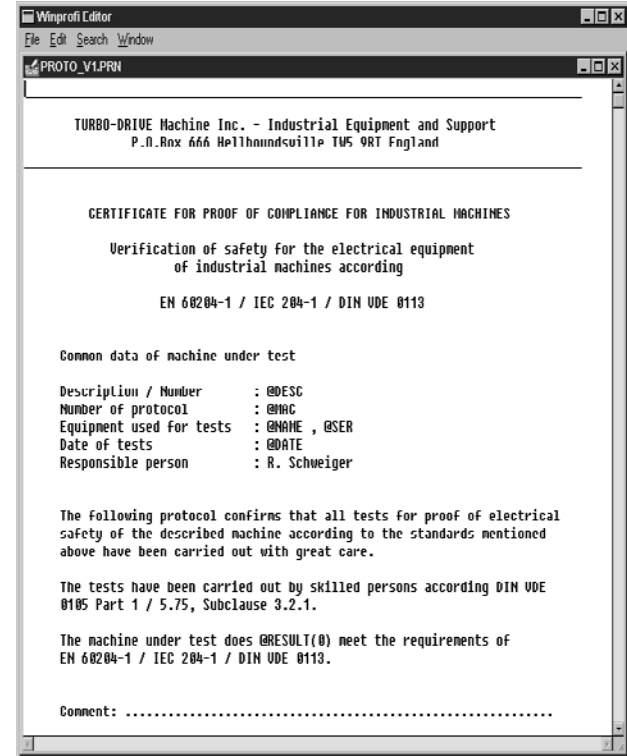
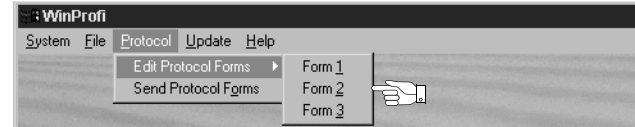
- Connect the METRISO[®]C test instrument with your PC via the IrDa-USB converter
- Start WinProfi.
- Switch on the test instrument.
- Set the on-time period of the METRISO[®]C to „>>>>>“, to give you enough time for adjusting the settings in WinProfi before the test instrument switches off again automatically, see chapter 3.3.
- Send or receive a data file



- Print data



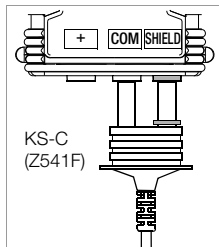
- Edit or transmit report templates



4 General Operation

The test cables are connected to the “+” and “COM” jacks.

The shielded cable should also be connected to the **COM** and **SHIELD** jacks for the measurement of electrostatic discharge capacity at floor coverings. (Accessory equipment KS-C „Cable set consisting of measurement cable and high-resistance measurement cable for METRISO C, for measurements in the $G\Omega$ range“, see connection diagram). Observe color codes when connecting the cables!



4.1 Automatic Settings, Monitoring and Shutdown

The instrument cannot be placed into operation, or it is shut down automatically, if battery voltage has fallen to below the lower limit value.

Measurement is automatically interrupted and/or the measuring function is disabled if voltage exceeds the allowable limit in the resistance range ($U > 25\text{ V}$).

The instrument switches itself off automatically, at the earliest after the current (automatic) measuring sequence has been completed, and after the predefined on-time has elapsed (see chapter 3.4). On-time is reset to the duration selected in the setup menu each time a key is activated.

Lamp Functions

Lamp	Status	Function
	red	Potential difference $\geq 150\text{ V}$ between finger contact and measurement input
Netz Mains	blinking red	Line voltage or interference voltage is present at the measurement inputs (insulation resistance and low resistance measurement are disabled)
LIMIT	red	<ul style="list-style-type: none"> – Measured insulation resistance is less than the selected limit value. – The measured low-value resistance is less than the allowable limit value.
U>25V	red	A voltage of greater than 25 V is present at the measurement inputs. The discharging process is not yet complete.

4.2 Measurement Value Display

The following is displayed at the LCD:

- Measurement values with abbreviated quantity type and units of measure
- The selected function

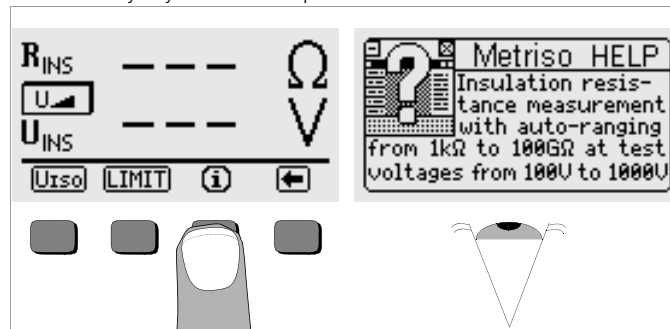
When automatic measuring sequences are used, the measurement values are displayed in digital format until the next measuring sequence is started, or until the instrument switches itself off automatically.

If the measuring range upper value is exceeded, the upper value is displayed preceded by the greater than symbol “>” in order to indicate over-ranging.

4.3 Online Help

Appropriate online help texts can be displayed at the LCD for each of the basic functions and sub-functions, **after the respective function has been selected in the corresponding menu.**

- Press the key to query online help.
- Press any key to exit the help function.



5 Measuring Insulation Resistance

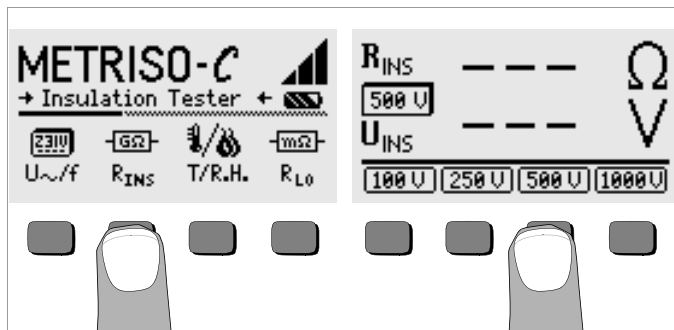
Insulation resistance can only be measured at voltage-free objects. If mains voltage or an interference voltage is applied to the measurement cables, insulation resistance is not measured and the Netz/Mains lamp lights up.



Note

Testing of Measurement Cables

We recommend short-circuiting the measurement cables with the test probes before carrying out the insulation measurement to check whether the instrument indicates almost zero W (see chapter 9). This helps to discover interruptions in the measurement cables which simulates a high insulation resistance.



- Press the R_{ISO} key.

The currently selected test voltage (nominal voltage) is displayed between R_{ISO} and U_{ISO} .

- Select another test voltage if necessary by pressing U_{ISO} and then the desired test voltage.
- Connect the device under test to the + and COM jacks.
- Start the measurement by pressing the **START** key.



Attention!

Do not touch the connector terminals at the instrument during performance of insulation resistance measurement!



Note

Three-Phase Current Systems

All conductors (L1, L2, L3 and N) must be measured against PE!

If the connector terminals are free, or if they have been connected to an ohmic power consumer for the performance of a measurement, a current with a value of approximately 1 mA would flow over your body at a voltage of 1000 V.

This electrical shock is not life endangering. However, the plainly perceptible shock may result in injury (as a result of startling etc.).

Capacitive Devices Under Test



Attention!

If measurement is performed at a capacitive object, e.g. a long cable, it is charged to a level of as great as 1000 V!

In this case, contact with the object is life-endangering!

After completion of insulation resistance measurement at capacitive objects, the device under test is automatically discharged via the instrument after the START key has been released. Contact with the object must therefore be maintained.

Do not disconnect the device under test until $U_{ISO} < 25 \text{ V}$ appears at the display.

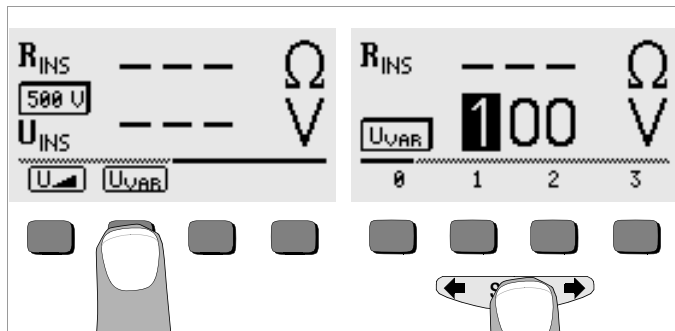


Note

The instrument's batteries are depleted rapidly during the measurement of insulation resistance. Only hold the START key depressed until the display value has stabilized.

5.1 Insulation Measurement with Adjustable Test Voltage

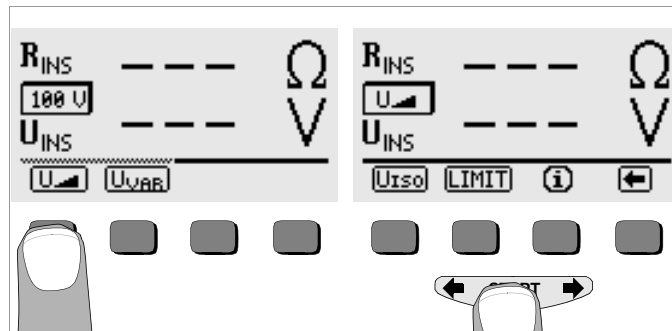
A DC test voltage within a range of 50 to 1000 V can be selected with the U_{VAR} function for measurements at sensitive components and in systems equipped with voltage limiting components.



- Select the U_{VAR} function from the U_{ISO} menu with the \leftarrow or the \rightarrow key and acknowledge with the U_{VAR} key.
- In order to enter the desired value:
Display the desired numerals, and if required the decimal point, with the help of the \leftarrow and \rightarrow keys. Select the desired numerals with the appropriate softkeys. Each time an entry is made, the cursor moves one place to the right. After a maximum of three numerals have been entered, exit the data entry window by pressing the \rightarrow softkey. If the selected voltage is not within the valid range, the cursor jumps back to the entry position for the first digit.
After the value has been completely entered and acknowledged with the **START** key, U_{VAR} is displayed between R_{ISO} and U_{ISO} .
- The remainder of the measurement procedure is identical to the test sequence used for predefined nominal voltages.

5.2 Measurement with Rising Test Current

The " U_{\triangle} " function can be used for the detection of weak points in insulation, as well as for the determination of response voltage at voltage limiting devices.



- Select the U_{\triangle} function from the U_{ISO} menu with the \leftarrow or the \rightarrow key and acknowledge with the U_{\triangle} key.

As long as the **START** key is depressed, test voltage is continuously increased. Insulation measurement begins:

- As soon as maximum voltage is reached (= variable test voltage, see chapter 5.1) or
- As soon as the **START** key is released
(when the desired voltage appears at the display) or
- As soon as a measurable test current is detected (e.g. after a discharge voltage sparkover).

Test voltage, any response or discharge voltages values and insulation resistance are all displayed.

5.3 Setting the Limit Value

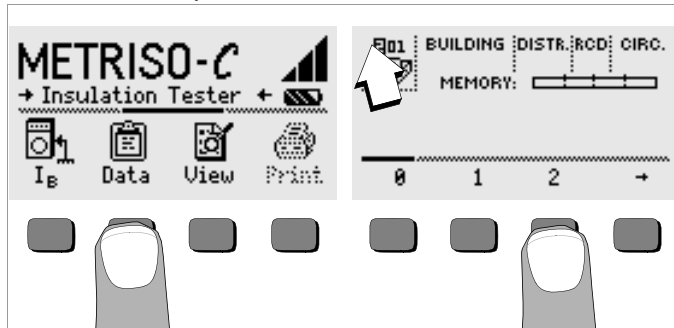
A limit value for insulation resistance can be selected with the **LIMIT** key. If measured values are detected below the limit value, the red **LIMIT** LED lights up.

6 Database Functions

The displayed measurement data for each measurement can be saved to an internal database, with or without a comment. A data record must be created and allocated to a specific memory address in order to be able to assign the individual measurement values to different buildings, distribution cabinets and measuring circuits.

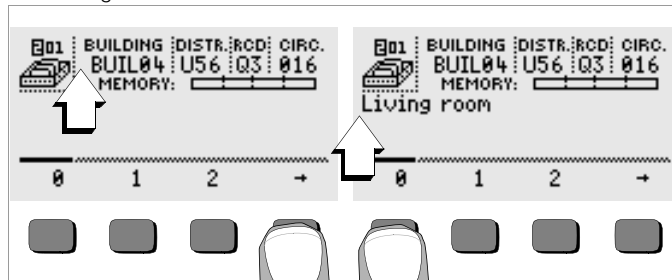
6.1 Creating a Data Record – Data Function

- Press the Data key.



- First create the desired memory address with the help of the softkeys. After acknowledging with the **START** key (press at center), the cursor appears at the first data entry position (BUILDING).

- With the help of the softkeys, entries can be made to the BUILDING, DISTRIBUTOR CABINET, RCD No. and CIRCUIT fields one after the other, and a designation can be entered for the electrical circuit.



Entering Data:

Display the desired alphanumeric character by pressing the **←** or the **→** key, and then select the character with the corresponding softkey.

Control characters can be entered in the same way and have the following meanings:

- ⇐ Move cursor to the left (without deleting data)
- ⇒ Move cursor to the right (without deleting data)
- ⏏ : Same function as the **START** key

After each character is selected, the cursor moves one position to the right. If **⏏** or the **START** key is activated (press at center), the cursor moves to the next entry field. After the fields BUILDING, DISTRIBUTOR CABINET, RCD No. and CIRCUIT have been completed, and after acknowledgement has been confirmed with the **⏏** softkey, the data fields are displayed as inverse images. After the **⏏** softkey has been activated once again, a designation for the selected electrical circuit can be entered.





Note


These entries are required by the PC software in order to enter measurement values into the database, and to generate reports with this information automatically.

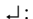
6.2 Saving Measurement Values – STORE Function

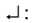
- Start the respective measurement. The STORE key is displayed after the measurement instead of the INFO key.
The STORE key is not displayed until after a given amount of time has elapsed for measurements which are performed without the **START** key. For example, the store key is not displayed after voltage measurements until a given amount of time has elapsed, so that the operator can first query the help text with the INFO key.
- The displayed measurement values are stored to the currently selected database memory address by briefly acknowledging with the STORE key. The key is briefly displayed as an inverse image during storage to memory.
- Pressing and holding the STORE key allows for the entry of a comment, and storage of the current measurement.

Entering a comment:

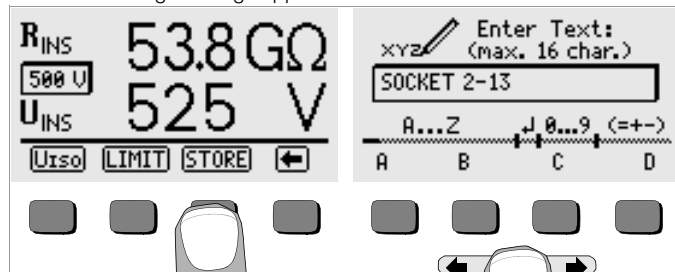
Display the desired alphanumeric character with the  or the  key and select the desired character with the corresponding softkey. Control characters are entered in the same way and have the following meanings:

: reverse and delete,

: same as the **START** key

After each character has been selected, the cursor moves one position to the right. Already entered characters can be deleted in reverse by pressing and holding any softkey (except for ).


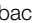
After entry of up to 15 characters, save the measurement values and the comment by acknowledging with the **START** key (press at center). The following message appears: "Data are stored".

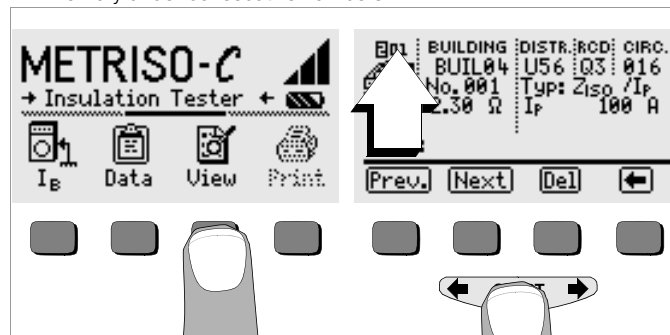


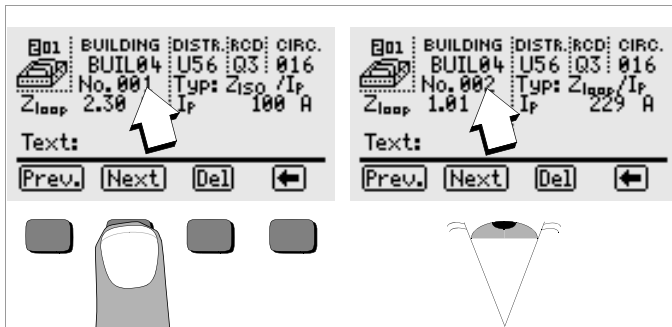
Note

The test reports included with the analysis software (e.g. PS3) have separate fields for measured values R_{ISON} (without load) and R_{ISOL} (with load). Enter an "N" as the first character for measurement of R_{ISON} (i.e. without load), so that the analysis software is able to determine which value is to be stored for the report. Otherwise, measured values are automatically stored as R_{ISOL} , i.e. with load.

6.3 Querying Data Records – View Function

- Select View.
- You can scroll forward through the memory addresses with the  key, or backwards with the  key.
- After selecting a memory address, the individual data records can be queried with the Prev. and Next softkeys, which have been stored to memory under consecutive numbers.

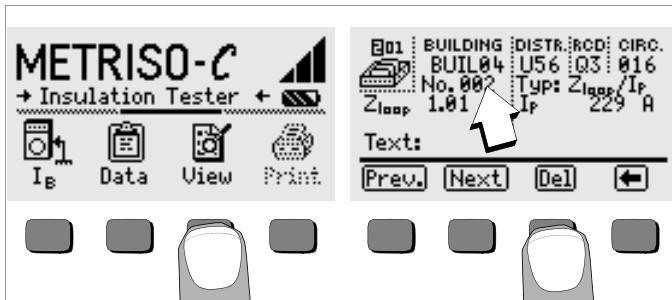




In case a measurement value is missing for the currently selected current circuit, perform the measurement and the value will be immediately stored.

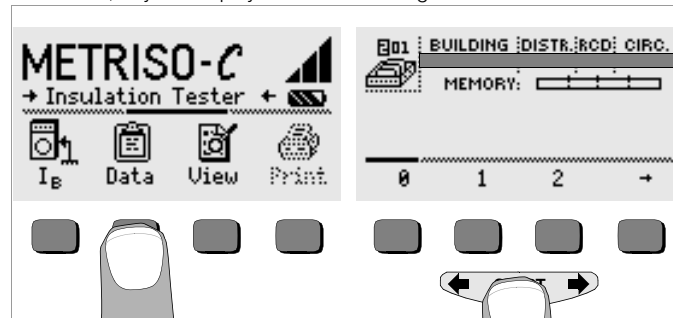
6.3.1 Deleting a Data Record from within a Memory Address – View Function

- Activate the Del key. No security request appears.
Data record numbering is changed as soon as an individual data record is deleted.



6.3.2 Deleting a Memory Address – Data Function

- Select Data.
- Enter blanks to the data fields BUILDING, DISTRIBUTOR CABINET, RCD No. and CIRCUIT. After all of these fields have been entirely overwritten with blanks, they are displayed as inverse images.

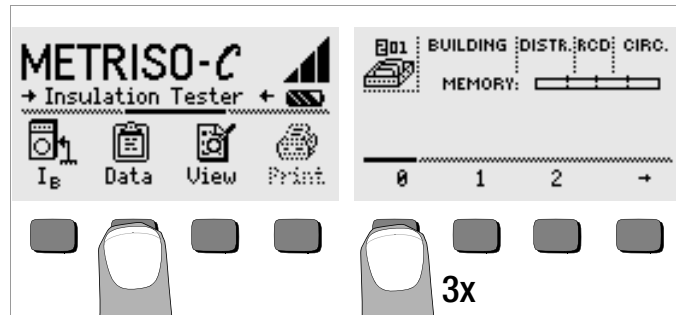


- Acknowledge with the **START** key (press at center). All data from the selected memory address are deleted.

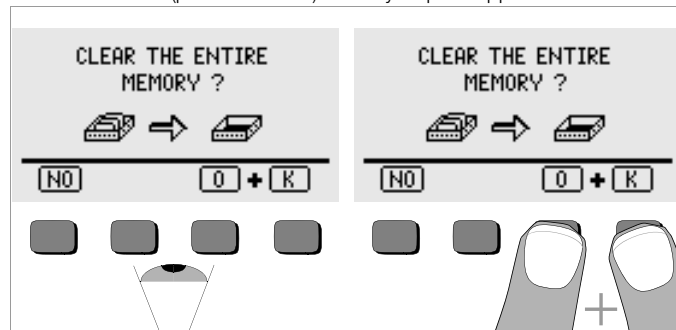
6.3.3 Delete All Memory Addresses – Data Function

Up to 250 data records can be stored to memory. The memory is full when the bar graph to the right of "MEMORY:" is entirely filled in. The entire memory, i.e. all data records from all memory addresses, can be deleted at once. We recommend uploading and saving your data to a PC before deletion.

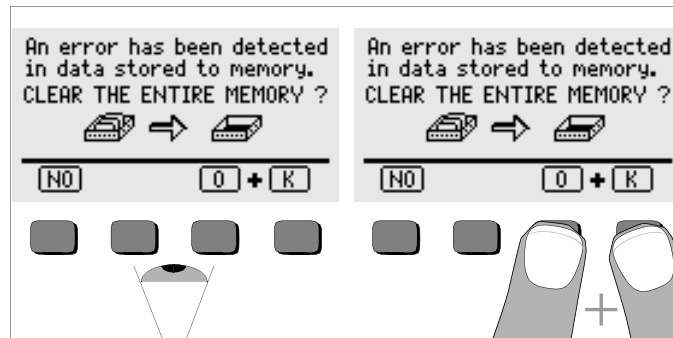
⇒ Select Data.



⇒ Enter memory address "000". After acknowledgement by pressing button **START** (press at center) a safety request appears.



⇒ By simultaneously activating O and K all data that have been saved are deleted from memory. The bar graph to the right of the parameter „MEMORY:“ is empty. To the left, memory address „001“ is displayed. New data can now be entered for the first address, or the database can be exited (press **↵** or **START** 9 times).



If the above message appears upon switching on the test instrument, all data can be saved to a PC before finally deleting the database in order to rectify the error.

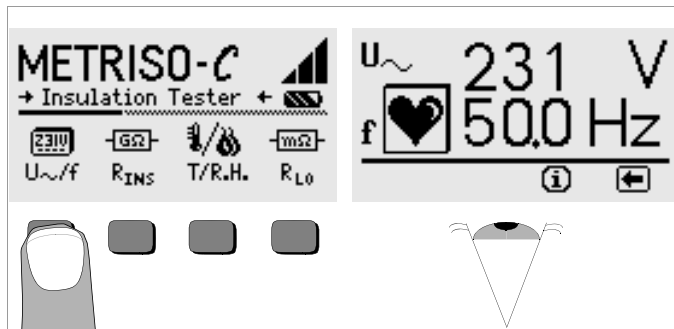
6.4 Print Function

Functions the symbols of which appear in gray or are displayed only in a faint raster screen, will not be available until after the next software update.

7 Measuring Alternating Voltage

Sinusoidal alternating voltage within a frequency range of 40 to 200 Hz can be measured with the test instrument.

- Press the U~/f key.
- Contact the measuring points with the measuring probes.



Note

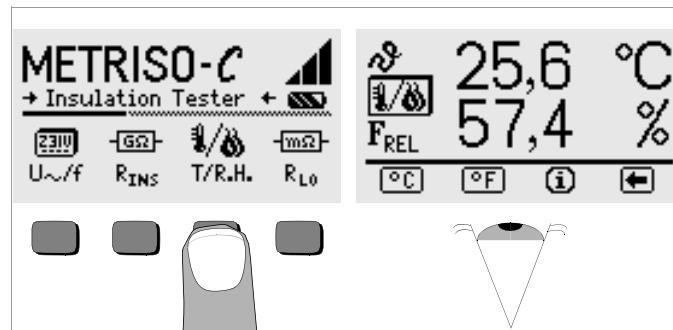
The input impedance for the voltage measuring range is 5 MΩ

8 Measuring Temperature and Humidity with Adapter Z541A (Accessory Adapter)

Temperatures within a range of -10.0 °C to +50.0 °C, as well as relative humidity from 10.0% to 90.0% can be measured with the temperature-humidity combination adapter.

- Connect the temperature-humidity adapter to the IR interface of the test instrument (see drawing on page 2) by inserting the guide pin of the adapter in the opening provided at the top of the test instrument such that the adapter is located on the two rubber pads in central position to the housing. Then push the adapter down to fix it tightly.

- Press the T/F_{REL} key. The adapter is activated via the interface.
- Select the desired temperature unit of measure, °C or °F, with the corresponding key. Temperature and humidity are displayed directly.
- We recommend moving the test instrument with the adapter to and fro for a few seconds to enable the adapter to adjust to the prevailing room climate more quickly. The air current can thus penetrate through the opening into the adapter housing more quickly. It would otherwise take several minutes to achieve this condition.
- When changing to another function, the adapter is deactivated.
- The measured values are only updated every 5 seconds to spare the adapter batteries.



Display at the Test Instrument

The „— —“ symbol shown on the display can be attributed to the following causes:

- incidence of sunlight
- depleted batteries in adapter Z541A
- adapter defective or not properly positioned

Adapter Z541A should not be exposed to intensive sunlight to prevent inadvertent activation via infrared (battery life!).

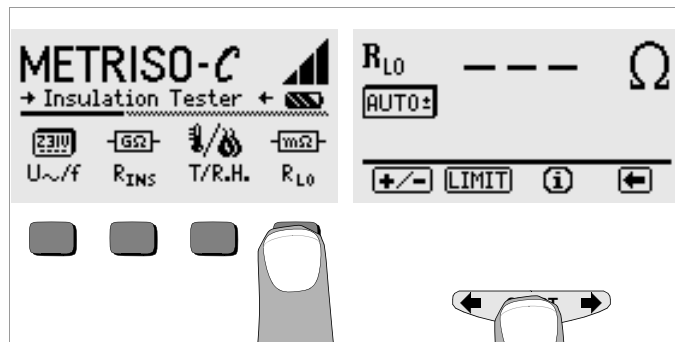
9 Measuring Low-Value Resistance (to 100 Ω)

According to the regulations, measurement of low-value resistance at protective conductors, earth conductors and bonding conductors must be performed with (automatic) measuring voltage polarity reversal, or with the flow of current in one direction (+ pole to PE), or the other (– pole to PE).



Attention!

Low-value resistance may only be measured at voltage-free objects.



Attention!

In order to be able to start the measurement, contact must first be established between the test probes and the device under test. If voltage is present at the device under test, or if resistance is greater than 100 Ω , no measurement is performed.

Automatic Polarity Reversal – AUTO \pm Function

With automatic polarity reversal, the instrument performs measurement first in one direction and then in the other, after the measuring sequence has been started.

The largest measured resistance value is always displayed. This presupposes that AUTO \pm is displayed underneath R_{LO}. If either of the values RLO/+ or RLO/– is displayed instead of AUTO \pm , press the \pm –key in the menu bar and then AUTO \pm .

Resistance values which do not demonstrate stabilized values until after settling in, should not be measured with automatic polarity reversal. Measurement with automatic polarity reversal may result in varying, excessively high measured values and thus to an ambiguous read-out.

Measurement with + Pole to PE, or – Pole to PE

In order to determine whether or not test results are independent of the direction of flow, measurement can be performed separately in both directions. Press the \pm –key in the menu bar to this end, and then either + or – depending upon the desired direction of flow.

Differing results indicate that voltage is present at the device under test (e.g. thermoelectromotive force or elemental voltage).

Measurement results may be distorted by parallel connected impedances from load current circuits and equalizing current, especially in systems equipped with “overcurrent protective devices” (formerly neutralization) without a separate protective conductor. A change in resistance during measurement (e.g. inductance), or poor contact may also result in distorted measurements.

The following are examples of resistance values which may change during measurement :

- Resistance values for incandescent light bulbs due to warming caused by test current
- Resistance with an excessively high inductive component

In order to assure unambiguous measurement results, it is necessary to recognize and eliminate any cause of error.

The instrument's batteries are depleted rapidly during resistance measurement. Only press the **START** key as long as necessary during measurement with current flow in a single direction.

9.1 Compensation for Measurement and Extension Cables (up to 10 Ω)

Measurement and extension cable ohmic resistance can be subtracted automatically from the measurement results. Proceed as follows:

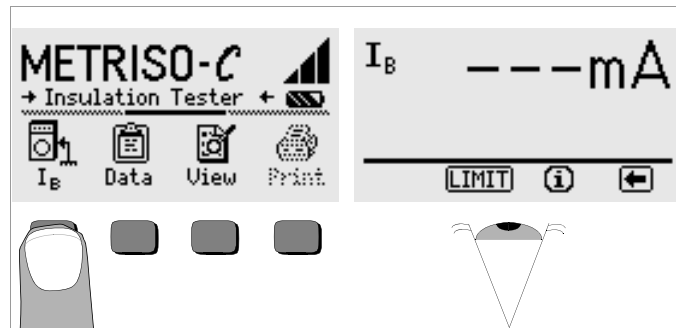
- Activate the \neq -key in the menu bar.
- Short circuit the two test probes at the ends of the measuring cables, with interconnected extension cables if used.
- Activate the Offset key. Cable resistance is displayed to the right of Offset.
- Connect the device under test.
- Start low-resistance measurement with the **START** key. The display value R_{LO} represents the measured value, from which the cable resistance value R_{Offset} has already been subtracted.

9.2 Setting the Limit Value

A resistance limit value can be selected with the "LIMIT" function. If a measured value exceeds this limit value, the red LIMIT LED lights up.

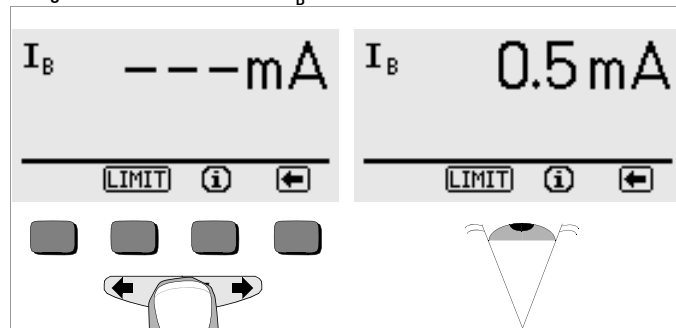
10 Measuring Contact Current

Substantiation of the absence of voltage can be provided by means of contact current measurement (DIN VDE 0701 part 240).



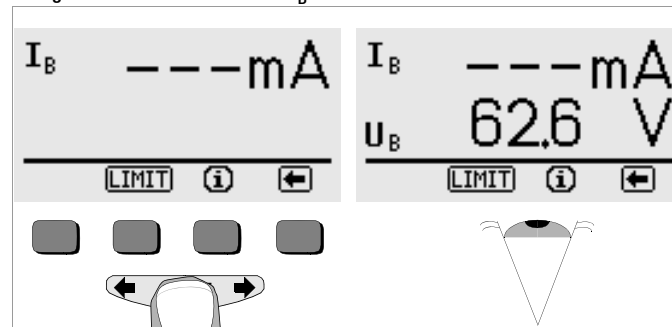
- ◇ Press the I_B key.
- ◇ Contact the measuring point with the + Pole and the COM jack with a protective conductor potential.

Voltage at the Device Under Test: $U_B < 25\text{ V}$

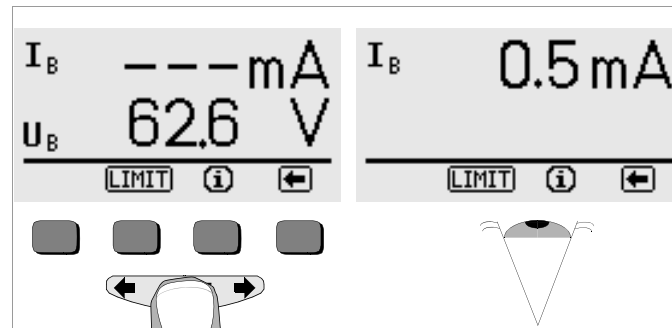


- ◇ Briefly press the **START** key in order to start the measurement. Contact current I_B is measured and displayed.

Voltage at the Device Under Test: $U_B > 25\text{ V}$



- ◇ Briefly press the **START** key in order to start the measurement. Contact voltage U_B is measured and displayed.



If the **START** key is press and held, I_B is measured and displayed.

10.1 Setting the Limit Value

A limit value for contact current can be selected with the **LIMIT** key. If a measured value exceeds this limit value, the red **LIMIT** LED lights up.

11 Characteristic Values

Measured Quantity	Display Range	Test Current	Measuring Range	Nominal Values / Impedance	Intrinsic Uncertainty	Measuring Uncertainty
R_{ISO}	000 k Ω ... 99.9 G Ω	1 mA ³⁾	20 k Ω ... 10.0 G Ω	$U_N = 100 \text{ V}^{2)}$	$\pm(5\% \text{ rdg.} + 3 \text{ d})$	$\pm(7\% \text{ rdg.} + 3 \text{ d})$
			0.20 M Ω ... 10.0 G Ω	$U_N = 250/500/1000 \text{ V}^{2)}$	$\pm(5\% \text{ rdg.} + 3 \text{ d})$	$\pm(7\% \text{ rdg.} + 3 \text{ d})$
			> 10.0 G Ω ... 99.9 G Ω	$U_N = 100/250/500/1000 \text{ V}^{2)}$	$\pm(8\% \text{ rdg.} + 3 \text{ d})$	$\pm(10\% \text{ rdg.} + 3 \text{ d})$
U_{ISO}	000 V ... 1.20 kV		50 ... 1.00 kV	5 M Ω	$\pm(2.5\% \text{ rdg.} + 3 \text{ d})$	$\pm(5\% \text{ rdg.} + 3 \text{ d})$
U_{\sim}	00.0 V ... 500 kV		10 ... 500 V	5 M Ω	$\pm(2.5\% \text{ rdg.} + 3 \text{ d})$	$\pm(5\% \text{ rdg.} + 3 \text{ d})$
f	15.0 ... 400 Hz		45 ... 200 Hz	5 M Ω	$\pm(0.5\% \text{ rdg.} + 2 \text{ d})$	$\pm(1\% \text{ rdg.} + 2 \text{ d})$
R_{LO}	0.00 ... 9.99 Ω	$I_N = 200 \text{ mA}$	0.15 ... 10 Ω	$U_0 = 4.5 \text{ V}$	$\pm(2.5\% \text{ rdg.} + 3 \text{ d})$	$\pm(5\% \text{ rdg.} + 3 \text{ d})$
	> 10.0 ... 99.9 Ω		> 10 ... 100 Ω		$\pm(8\% \text{ rdg.} + 3 \text{ d})$	$\pm(10\% \text{ rdg.} + 3 \text{ d})$
I_B	0.00 μA ... 9.99 mA		0.1 ... 10 mA AC	2 k Ω	$\pm(5\% \text{ rdg.} + 3 \text{ d})$	$\pm(6\% \text{ rdg.} + 3 \text{ d})$
$T^{1)}$	-10.0 ... +50.0 °C		0 ... +40 °C		$\pm 2 \text{ °C}$	
$F_{rel}^{1)}$	10.0 ... 90.0%		20 ... 80%		$\pm 5\%$	
Phase Test	LED PE > 100 V		100 ... 500 V	> 100 M Ω /50 Hz		

¹⁾ With external adapter Z5414A as accessory

²⁾ DC nominal voltage = $U_N + (0 \dots 15\%)$

³⁾ At nominal resistance $R_N = 1000 \text{ }\Omega/\text{V}$

Reference Conditions

Ambient Temperature	+ 23 °C $\pm 2 \text{ K}$
Relative Humidity	40 ... 60%
Battery Voltage	5.5 V $\pm 1\%$
Meas. Qty. Frequency	50 Hz $\pm 0.2 \text{ Hz}$
Live Voltage Waveshape	sine, deviation between RMS and rectified values < 1%

Power Supply

Batteries	4 ea. 1.5 V baby cells (4 x C-Size) (alkaline-manganese per IEC LR14) or 4 ea. NiCd rechargeable batteries
Nominal Range of Use	4.6 ... 6.5 V
Battery Test	symbolic display

Battery Saver Circuit

Display illumination can be switched off. The test instrument switches itself off automatically 10 to 60 seconds after the last key operation.

Service Life

On-time can be selected by the user. for R_{ISO} (1000 V/1 M Ω), R_{LO} with 20 s on-time and one measurement each with a duration of 5 s – with one set of batteries (alkaline-manganese): 1,600 measurements – with one set of storage batteries (2200 mAh): 1,000 measurements

Safety Shutdown

The instrument is switched off, or cannot be switched on, if supply voltage has dropped to below the critical level.

Charging Socket

Inserted rechargeable batteries can be recharged inside the instrument by connecting the NA102 battery charger (Z501N) to the charging socket.

Overload Capacity

R _{LO}	Electronic protection disables start-up if interference voltage is present.
U~	500 V~ continuous

Electrical Safety

Standard	IEC 1010-1:1990, IEC 1010-1/A2:1995 EN 61010-1:1993, EN 61010-1/A2:1995
VDE Requirement	VDE 0411 Part 1, 1994-03
Safety Class	II
Pollution degree	2
Measuring Category	Insulation measurement – 1000 V DC – no overvoltage Voltage measurement – 500 V – CAT II
Fuses	FF0.315-1000G

Electromagnetic Compatibility EMC

Interference Emission	EN 61326:2002 Class B
Interference Immunity	EN 61326:2002 EN 61000-4-2: 1995/A1: 1998 Feature A EN 61000-4-3: 1995/A1: 1998 Feature B

Ambient Conditions

Nominal Temperature	0 ... +40 °C
Operating Temperature	–10 ... +50 °C
Storage Temperature	–20 ... +60 °C (without batteries)
Relative Humidity	to 75% (max. 85% for storage and transport), no condensation allowed
Elevation	max. 2000 m
Deployment	indoors; outdoors only under the specified ambient conditions

Mechanical Design

Display	multiple dot matrix display 128 x 64 pixels (65 mm x 38 mm), illuminated
Dimensions	275 mm x 140 mm x 65 mm
Weight	approx. 1.2 kg with batteries

Protection	Housing IP 52 per DIN VDE 0470 Part 1/EN 60529 with pressure compensating diaphragm made of microporous ePTFE, non-aging, diam. 8 mm in battery compartment cover
------------	--

Extract from table on the meaning of IP codes

IP XY (1 st digit X)	Protection against foreign object entry	IP XY (2 nd digit Y)	Protection against entry of water
2	≥ 12.5 mm Ø	2	drops (with enclosure tilted 15°)
3	≥ 2.5 mm Ø	3	spraying water
4	≥ 1.0 mm Ø	4	splashing water
5	dust protected	5	water jets
6	dust-tight	6	powerful water jets

Data Interface

Type	infrared interface (SIR/IrDa) bidirectional, half-duplex
Format	9600 baud, 1 start bit, 1 stop bit, 8 data bits, no parity, no handshake
Range	max. 10 cm, recommended: < 4 cm

Display Values including Allowances for Measuring Error

Table for the determination of minimum display values for insulation resistance
by making allowances for the instrument's measuring error.


Limit Value	Minimum Display Value	Limit Value	Minimum Display Value
020 kΩ	025 kΩ		
100 kΩ	111 kΩ	100 MΩ	111 MΩ
200 kΩ	219 kΩ	200 MΩ	219 MΩ
500 kΩ	541 kΩ	500 MΩ	541 MΩ
0.20 MΩ	0.25 MΩ		
0.50 MΩ	0.57 MΩ		
1.00 MΩ	1.11 MΩ	1.00 GΩ	1.11 GΩ
2.00 MΩ	2.19 MΩ	2.00 GΩ	2.19 GΩ
5.00 MΩ	5.41 MΩ	5.00 GΩ	5.41 GΩ
10.0 MΩ	11.1 MΩ	10.0 GΩ	11.1 GΩ
20.0 MΩ	21.9 MΩ	20.0 GΩ	22.6 GΩ
50.0 MΩ	54.1 MΩ	50.0 GΩ	55.9 GΩ

Table for the determination of maximum display values for low resistances by making allowances for the instrument's measuring error.

Limit Value	Maximum Display Value	Limit Value	Maximum Display Value
0.15 Ω	0.11 Ω		
0.20 Ω	0.16 Ω	5.00 Ω	4.72 Ω
0.50 Ω	0.44 Ω	10.0 Ω	9.47 Ω
1.00 Ω	0.92 Ω	20.0 Ω	17.7 Ω
2.00 Ω	1.87 Ω	50.0 Ω	44.7 Ω

12 List of Abbreviations and their Meanings

Voltage

U	Test voltage or nominal voltage
U _{ISO} 	Rising test voltage for insulation testing
U~	Measured voltage (sinusoidal alternating voltage)

Temperature / Atmospheric Humidity

T / ϑ	Temperature
F _{REL}	Relative atmospheric humidity

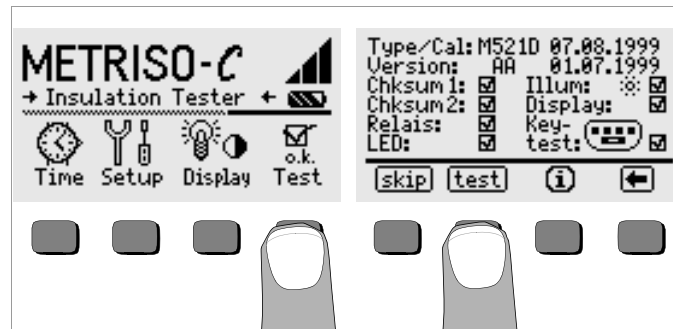
Resistance, Contact Current

LIMIT	Limit value for insulation resistance, low-value resistance or contact current
-------	--

Offset	Correction value of resistance for measurement cables
R _{INS}	Insulation resistance
R _{LO}	Low-value resistance (cable resistance)

13 Maintenance

13.1 Self-Test



➤ The self-test is started from the main menu with the Test key. The test has a duration of several seconds.

The following information is displayed in the two headers:

Type/Cal:	Device type / date of last calibration
Version:	Software version and issue date

Self-tests for the items Chksum through LED are performed automatically, one after the other, and are checked off or marked with a horizontal dash if they are not passed.

Chksum1/2: Status display for internal testing (Each test must be completed with a check mark. If not, the measuring and test instrument may no longer be used. Please contact our service center in this case.)

Relays: Each relay is switched twice.

LED: The U, LIMIT and NETZ/MAINS lamps each blink twice in red. The PE lamp cannot be tested automatically!

As soon as the tests in the left-hand column have been completed, the following tests must be started manually:

- **Illum:** Press the Test key twice in order to activate and deactivate display illumination.
- **Display:** Press the Test key after each test pattern appears in order to check the display elements.
- **Keytest:** Perform the key test by pressing each of the softkeys once, and by pressing the start key once in each of its three positions. The keys appear filled in at the key pictograph after they have been tested.

Individual tests can be skipped by pressing the skip key before starting the respective test. These tests are then identified with a horizontal dash, as is also the case for tests which have not been passed.

13.2 Battery Operation

When only one solid segment remains in the battery symbol, the batteries must be replaced, or recharged if rechargeable batteries are used.

Check the batteries at short, regular intervals or after lengthy periods of storage to make sure no leakage has occurred. If leakage has occurred, the electrolyte must be carefully and completely removed from the instrument with a damp cloth before new batteries are installed.

Charging the Batteries



Attention!

Use only the NA102 battery charger (article no. Z501N) with safe electrical isolation and a nominal secondary voltage of 9 V DC to recharge the batteries.

Before connecting the battery charger to the charging socket at the device, make sure of the following points:

- **Rechargeable batteries have been installed (not normal batteries).**
- The instrument has been disconnected from the measuring circuit at all poles.
- The voltage selector at the charger has been set to 9 V.

Connect the NA102 battery charger to the charging socket with the 3.5 mm jack plug. Set the voltage selector switch at the NA102 to 9 V. Switch the test instrument on.

The test instrument recognizes the fact that a battery charger has been connected and starts the charging cycle. The 5 segments of the battery symbol are continuously displayed in a sweeping pattern from left to right for the entire duration of the charging cycle.

Depleted batteries require a charging cycle of approximately 14 hours. If the batteries are exhausted to a great enough extent, the test instrument can no longer be switched on. If this is the case, leave the test instrument connected to the activated battery charger for about 30 minutes, and then proceed as described above.

13.3 Changing the Batteries of the Temperature and Humidity Measuring Adapter Z541A

Separate the bottom part of the housing from the top to change the batteries.

- Untighten the screw at the bottom of the housing and remove the housing lid.
- Insert two 1,5 V round cells of type LR1 (size N) in the battery compartment according to the indicated polarity symbols.
- Replace the housing lid (the opening at the bottom of the housing and the thread of the screw must be on top of each other) and press the lid until it engages. Retighten the screw carefully.

13.4 Fuses

If a fuse has blown due to an overload, an appropriate error message appears at the LCD. However, the instrument's voltage measuring ranges are still functional.



Attention!

Disconnect the instrument from the measuring circuit before opening the cap for replacing the fuse!

Replacing Fuses

- Remove the cap for the respective fuse with the help of a suitable tool (e.g. screwdriver) by pressing and turning counterclockwise.



Attention!

Incorrect fuses may cause severe damage to the test instrument.

Only original fuses from GMC-I Messtechnik GmbH assure the required protection by means of suitable breaking characteristics (article no. 3-578-222-02).

Bridging or repairing fuses is prohibited!

The instrument may be damaged if fuses with other current ratings, blowing or breaking characteristics are used!

- Remove the defective fuse and replace it with a new replacement fuse. Replacement fuses are located in the battery compartment.
- Insert the new fuse and the cap together, and lock into place by turning clockwise.
- Replace the battery compartment cover and secure it with the screws.

13.5 Housing

No special maintenance is required for the housing. Keep outside surfaces clean. Use a slightly dampened cloth or a special purifier for synthetic material for cleaning. Avoid the use of cleansers, abrasives and solvents.

Device Return and Environmentally Compatible Disposal

The instrument is a category 9 product (monitoring and control instrument) in accordance with ElektroG (*German Electrical and Electronic Device Law*). This device is not subject to the RoHS directive.

We identify our electrical and electronic devices (as of August 2005) in accordance with WEEE 2002/96/EG and ElektroG with the symbol shown to the right per DIN EN 50419.

These devices may not be disposed with the trash. Please contact our service department regarding the return of old devices.



14 Repair and Replacement Parts Service DKD Calibration Center* and Rental Instruments Service

If required please contact:

GMC-I Service GmbH

Service Center

Thomas-Mann-Straße 20

90471 Nürnberg, Germany

Phone: +49 911 8602-0

Fax: +49 911 8602-253

E-mail: service@gossenmetrawatt.com

This address is for Germany only.

Abroad, our representatives or establishments are at your disposal.

* **DKD Calibration Laboratory for Electrical Quantities DKD–K–19701** **accredited per DIN EN ISO/IEC 17025:2005**

Accredited measured quantities: direct voltage, direct current values, DC resistance, alternating voltage, alternating current values, AC active power, AC apparent power, DC power, capacitance, frequency, temperature

Competent Partner

GMC-I Messtechnik GmbH is certified in accordance with DIN EN ISO 9001:2000.

Our DKD calibration laboratory is accredited by the Deutscher Kalibrierdienst (*German Calibration Service*) in accordance with DIN EN ISO/IEC 17025:2005 by under registration number DKD–K–19701.

We offer a complete range of expertise in the field of metrology: from **test reports** and **proprietary calibration certificates** right on up to **DKD calibration certificates**.

Our spectrum of offerings is rounded out with free **test equipment management**. An **on-site DKD calibration station** is an integral part of our service department. If errors are discovered during calibration, our specialized personnel are capable of completing repairs using original replacement parts. As a full service calibration laboratory, we can calibrate instruments from other manufacturers as well.

15 Product Support

If required please contact:

GMC-I Messtechnik GmbH

Product Support Hotline

Phone: +49 911 8602-0

Fax: +49 911 8602-709

E-Mail support@gossenmetrawatt.com

Edited in Germany • Subject to change without notice • A pdf version is available on the Internet



GMC-I Messtechnik GmbH
Südwestpark 15
90449 Nürnberg • Germany

Telefon +49 911 8602-111
Telefax +49 911 8602-777
E-Mail info@gossenmetrawatt.com
www.gossenmetrawatt.com