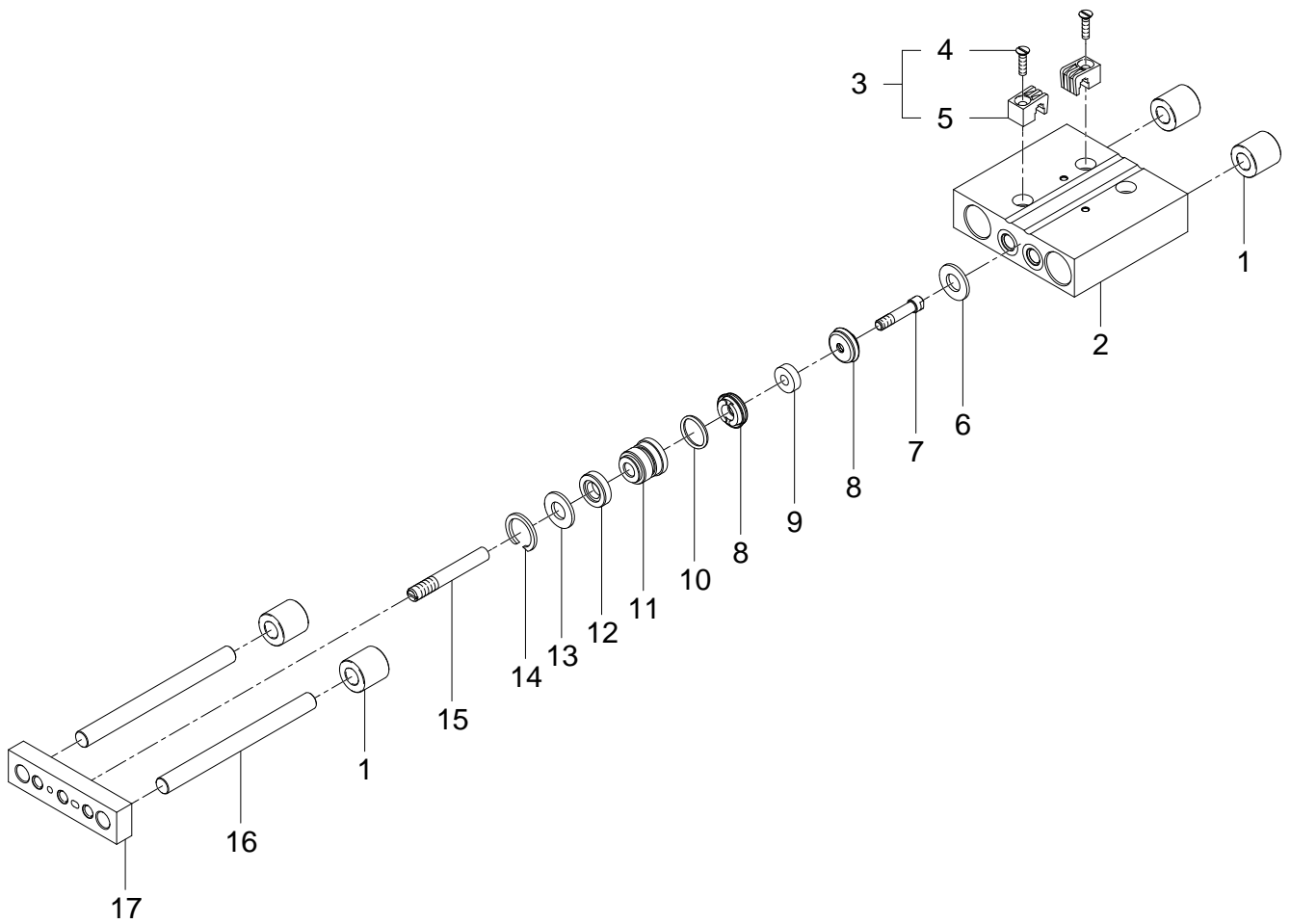


189467 DFC-10-5-P-A-GF Mini guided drive - Series: All



189467 DFC-10-5-P-A-GF Mini guided drive - Series: All

Pos.	Part no.	Type	Note	Qty.	Unit
A	665293	DFC-10-P-A Set of wearing parts	Spare parts: 8, 10, 12	1	PC
1		SINT-B50 5X10X10 Cylinder bearing	Not available	4	PC
2		DFC- 10 Housing	Not available	1	PC
3	685039	DFC- Sensor bracket		1	PC
4		DIN 963-M2X8-4.8 Countersunk screw	Not available separately, see position 3	2	PC
5		DFC-...-P-A Sensor bracket	Not available separately, see position 3	2	PC
6		DFC-10 Disc	Not available	1	PC
7	727366	M3X13,5 Shaft screw	Use locking compound 8181258 CYBERBOND TI 7680 Tightening torque 0.45 Nm / 0.3 lbf ft	1	PC
8		BA-K20E-010 Complete piston	Not available separately, see position A Lubricate with 684474 LUB-KC1 during assembly	1	PC
9	369764	7,85X3,1X2,48 Ring magnet		1	PC
10		B-8X1-N-NBR75 O-ring ISO3601	Not available separately, see position A	1	PC
11		DFC-10 Bearing cap	Not available	1	PC
12		WIFC1-4X7X2,8-TPE-U:Q Wiper seal	Not available separately, see position A	1	PC
13		5,4X10,9X1 Disc	Not available	1	PC
14	241674	DIN 472-11X1 Retaining ring		1	PC
15		ARI-04-X0015,1-BS Piston rod	Not available Use locking compound 8181258 CYBERBOND TI 7680	1	PC
16		DFC- 10- Guide rod	Not available	2	PC
17		DFC-10 Moment compensator	Not available	1	PC