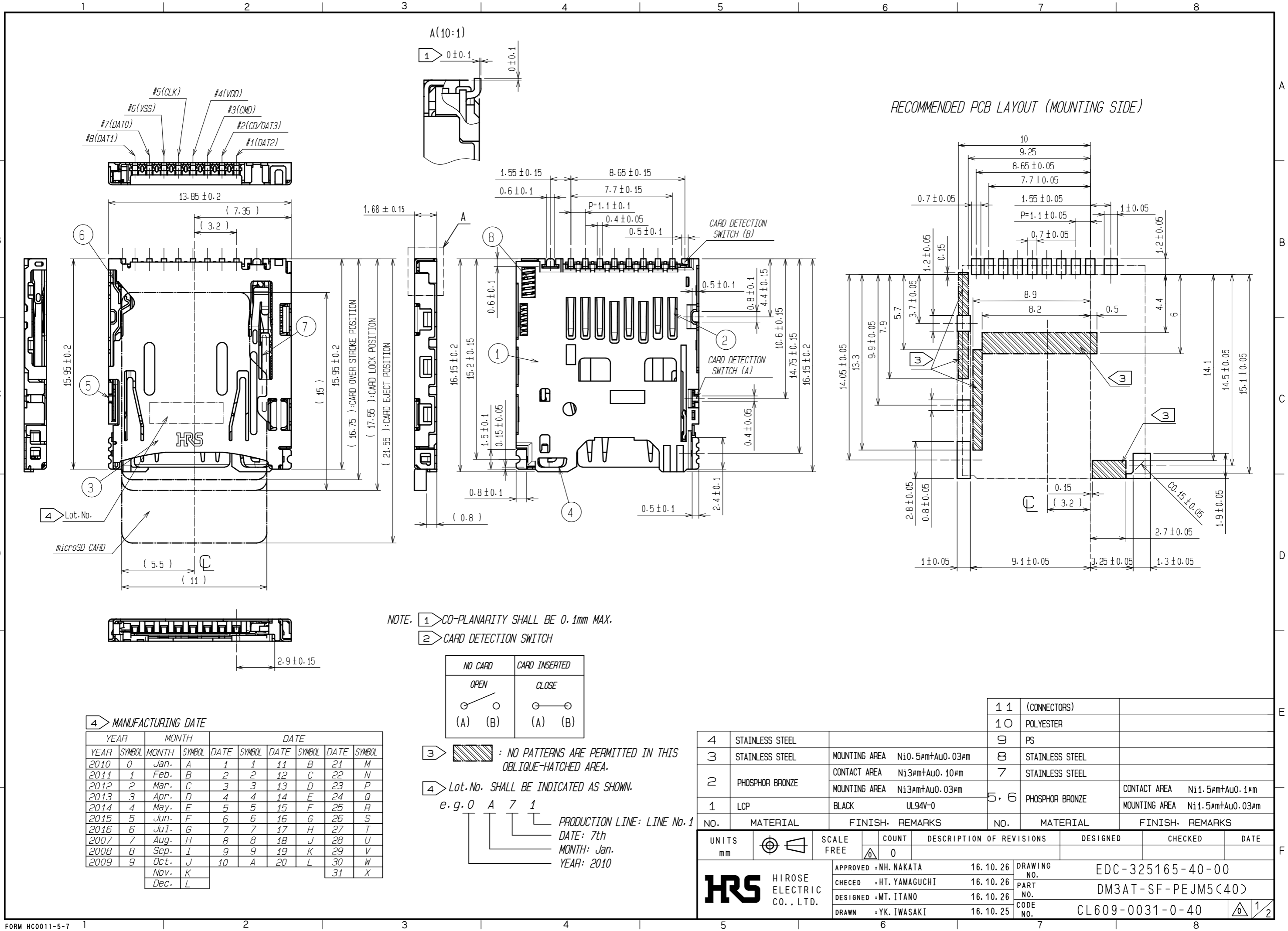


APPLICABLE STANDARD		microSD Memory Card Specifications Ver 1.10			
RATING	OPERATING TEMPERATURE RANGE	-25 °C TO +85 °C (NOTE1)	STORAGE TEMPERATURE RANGE	-40 °C TO +85 °C	
	VOLTAGE	AC 125V	OPERATING HUMIDITY RANGE	95%MAXIMUM (NON-CONDENSING)	
	CURRENT	0.5A			
SPECIFICATIONS					
ITEM	TEST METHOD		REQUIREMENTS	QT	AT
CONSTRUCTION					
GENERAL EXAMINATION	VISUALLY AND BY MEASURING INSTRUMENT.		ACCORDING TO DRAWING.	X	X
MARKING	CONFIRMED VISUALLY.			X	X
ELECTRIC CHARACTERISTICS					
CONTACT RESISTANCE MILLIVOLT LEVEL METHOD IEC60512-2-2a	OPEN VOLTAGE 20 mV AC MAX, TEST CURRENT 1mA.		INITIALLY 100 mΩ MAXIMUM (NOTE 2).	X	-
VOLTAGE PROOF IEC60512-2-4a	500 Vrms AC IS APPLIED FOR 1 MINUTE.		①NO FLASHOVER OR BREAKDOWN. ②CURRENT LEAKAGE 1mA MAXIMUM.	X	X
INSULATION RESISTANCE IEC60512-2-3a	MEASURE WITHIN 1 MINUTE AFTER APPLYING 500 V DC.		INITIALLY 1000 MΩ MINIMUM.	X	-
MECHANICAL CHARACTERISTICS					
CARD INSERTION FORCE	MEASURED BY APPLICABLE CORD AT 25mm/min.		THE INITIAL STAGE:12 N MAX. AFTER MECHANICAL OPERATION:15N MAX.	X	-
CARD EJECTION FORCE					
MECHANICAL OPERATION [OFFICE ENVIRONMENT] EIA364B class1.1	10,000 TIMES INSERTIONS AND WITH DRAWAL SHALL BE MADE AT THE CYCLE RATE LESS THAN 10 CYCLE PER 1 MINUTE. NOTE: AFTER EACH 10 CYCLES STOP THE INSRETION AND REST THE CONNECTOR FOR 5 TO 10 MINUTES. CARD SURFACE SHALL BE CLEANED BY AIR BLOW: AT EACH 100 CYCLES INTERVAL(10 TIMES) FROM START TO 1,000TH CYCLE. AT EACH 1,000 CYCLES INTERVAL (9 TIMES) FROM 1,001TH CYCLE TO 10,000TH CYCLE.		① CONTACT RESISTANCE: AFTER TEST 40 mΩ MAXIMUM CHANGE. (CONTACT RESISTANCE REVERSION BY INSERTION AND EXTRACTION IS AVAILABLE) ② NO MECHANICAL DAMAGE SHALL OCCUR ON THE PARTS.	X	-
VIBRATION AND HIGH FREQUENCY IEC60512-4-6d	FREQUENCY 10 TO 55 TO 10 Hz/min, SINGLE AMPLITUDE 0.75 mm FOR 4 h IN 3 DIRECTIONS, TOTAL 12 h.		① NO ELECTRICAL DISCONTINUITY OF 100 ns. ② NO MECHANICAL DAMAGE SHALL OCCUR ON THE PARTS.	X	-
SHOCK IEC60512-4-6c	ACCELERATION 490m/s ² STANDARD HOLDING TIME 11 ms, SEMI-SINE WAVE FOR 3TIMES IN 3 DIRECTIONS, TOTAL 18 TIMES.			X	-
COUNT	DESCRIPTION OF REVISIONS	DESIGNED	CHECKED	DATE	
△	1				
REMARK			APPROVED	NH. NAKATA	16. 10. 26
NOTE1:INCLUDE THE TEMPERATURE RISE BY CURRENT.			CHECKED	HT. YAMAGUCHI	16. 10. 26
NOTE 2:CONTACT RESISTANCE INCLUDES CONDUCTOR RESISTANCE.UNLESS OTHERWISE SPECIFIED, THE TEST SHOULD BE DONE UNDER TEMP. 15 TO 35°C, AIR PRESSURE 86 TO 106kPa, RELATIVE HUMIDITY 25 TO 85%.			DESIGNED	MT. ITANO	16. 10. 26
			DRAWN	YK. IWASAKI	16. 10. 25
Note QT:Qualification Test AT:Assurance Test X:Applicable Test		DRAWING NO.		ELC-325165-40-00	
HRS	SPECIFICATION SHEET		PART NO.	DM3AT-SF-PEJM5 (40)	
	HIROSE ELECTRIC CO., LTD.		CODE NO.	CL609-0031-0-40	△ 1/2

SPECIFICATIONS					
ITEM	TEST METHOD		REQUIREMENTS	QT	AT
ENVIRONMENTAL CHARACTERISTICS					
DAMP HEAT, CYCLIC IEC60512-6-11m	10 CYCLES (1 CYCLE=24 HOURS) WITH CONNECTORS ENGAGED. 		① CONTACT RESISTANCE: 40 mΩ MAXIMUM CHANGE AFTER TESTING. ② INSULATION RESISTANCE: 100 MΩ MINIMUM AFTER TESTING. ③ NO MECHANICAL DAMAGE OR HEAVY CORROSION SHALL OCCUR ON THE PARTS.	X	-
RAPID CHANGE OF TEMPERATURE IEC60512-6-11d	5 CYCLES (1 CYCLE=1 HOUR) WITH CONNECTORS ENGAGED. TEMPERATURE:-55 TO +85°C			X	-
DRY HEAT IEC60512-6-11i	EXPOSED AT 85 °C FOR 96 HOURS WITH CONNECTORS ENGAGED.			X	-
COLD IEC60512-6-11j	EXPOSED AT -25 °C FOR 96 HOURS WITH CONNECTORS ENGAGED.			X	-
DAMP HEAT, STEADY STATE IEC60512-6-11c	EXPOSED AT 40 °C, 90 TO 95 % RH, 96 HOURS WITH CONNECTORS ENGAGED.			X	-
HYDROGEN SULFIDE JEIDA 38	EXPOSED IN 3 PPM HYDROGEN SULFIDE, APPROX. 40°C, 80% RH, 96 HOURS, WITH CONNECTORS ENGAGED.			X	-
Note QT:Qualification Test AT:Assurance Test X:Applicable Test			DRAWING NO.	ELC-325165-40-00	
HRS	SPECIFICATION SHEET		PART NO.	DM3AT-SF-PEJM5 (40)	
	HIROSE ELECTRIC CO., LTD.		CODE NO	CL609-0031-0-40	2/2

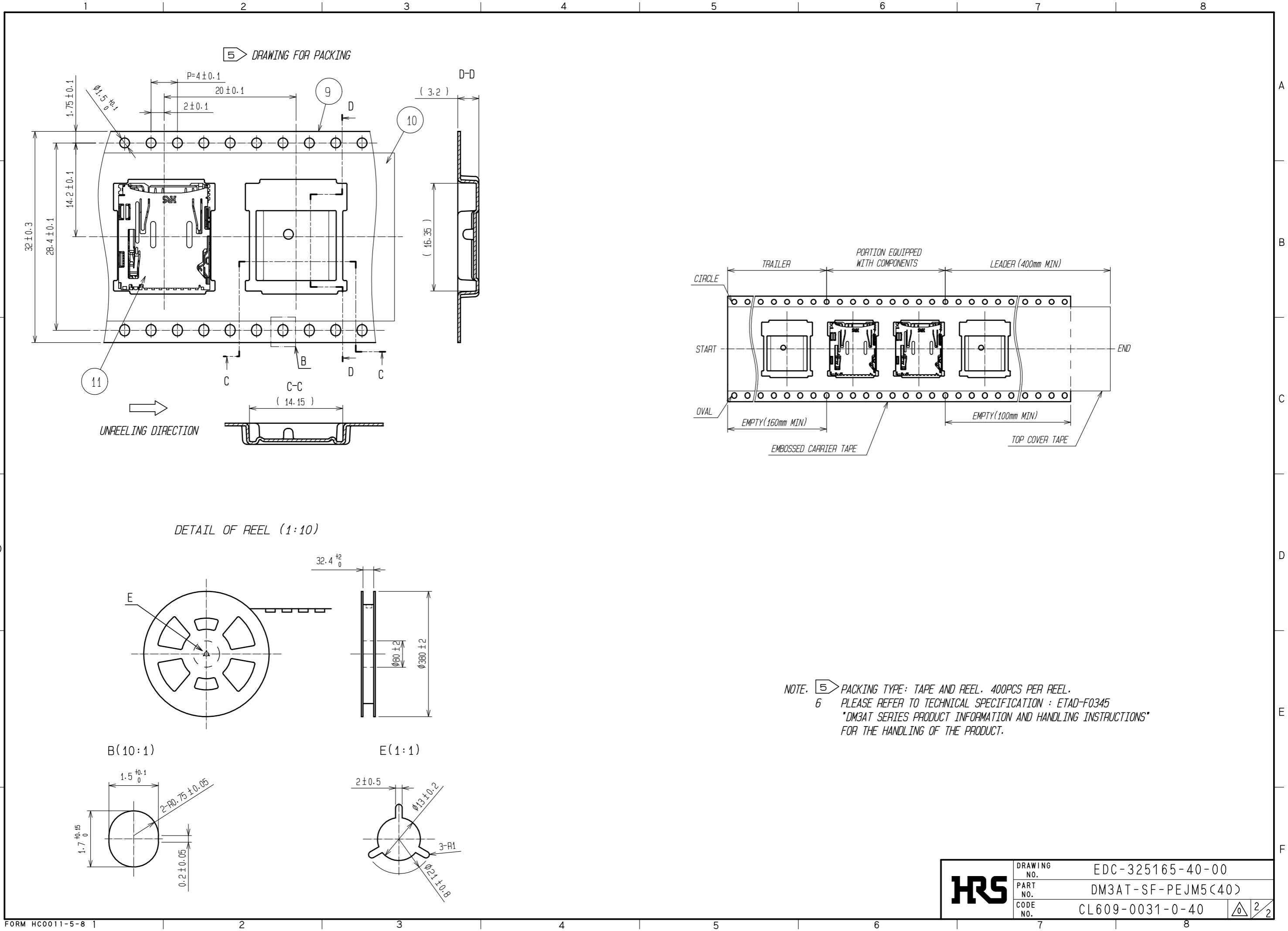


NO.	MATERIAL	FINISH	REMARKS	NO.	MATERIAL	FINISH	REMARKS
4	STAINLESS STEEL			1 1	(CONNECTORS)		
3	STAINLESS STEEL	MOUNTING AREA Ni0.5μm+Au0.03μm		1 0	POLYESTER		
2	PHOSPHOR BRONZE	CONTACT AREA Ni3μm+Au0.10μm		9	PS		
1	LCP	BLACK UL94V-0		8	STAINLESS STEEL		
				7	STAINLESS STEEL		
				5, 6	PHOSPHOR BRONZE	CONTACT AREA Ni1.5μm+Au0.1μm	
						MOUNTING AREA Ni1.5μm+Au0.03μm	

UNITS	SCALE	COUNT	DESCRIPTION OF REVISIONS	DESIGNED	CHECKED	DATE
mm	FREE	0				

APPROVED	DATE	DRAWING NO.	DESIGNED	DATE
NH. NAKATA	16.10.26	EDC-325165-40-00	HT. YAMAGUCHI	16.10.26
HT. YAMAGUCHI	16.10.26	PART NO.	MT. ITANO	16.10.26
MT. ITANO	16.10.26	DM3AT-SF-PEJ5(40)	YK. IWASAKI	16.10.25
YK. IWASAKI	16.10.25	CODE NO.		
		CL609-0031-0-40		

2018/03/22 21:06:26(JST) Karen Lawrence
 RoHS2(10 substances conformity)
 DRAWING FOR REFERENCE: This is subject to change without notice
 In cases where the application will demand a high level of reliability, such as automotive, please contact a company representative for further information.



NOTE. 5 PACKING TYPE: TAPE AND REEL. 400PCS PER REEL.
 6 PLEASE REFER TO TECHNICAL SPECIFICATION : ETAD-F0345
 DM3AT SERIES PRODUCT INFORMATION AND HANDLING INSTRUCTIONS
 FOR THE HANDLING OF THE PRODUCT.

HRS	DRAWING NO.	EDC-325165-40-00
	PART NO.	DM3AT-SF-PEJM5(40)
	CODE NO.	CL609-0031-0-40
		2/2