



APPLICATION FOR RoHS DIRECTIVE (2011/65/EU)

On Behalf of

Shanghai Anviz Technology Co. Ltd

CARD ACCESS CONTROL

VP30

Prepared for : Shanghai Anviz Technology Co. Ltd

Address: 2th Floor, 4289Jindu Road, Shanghai China

Prepared By : Shenzhen Alpha Product Testing Co., Ltd.

Address: Building B, East Area of Nanchang Second Industrial Zone,
Gushu 2nd Road, Bao'an District, Shenzhen 518126, P.R.
China

Date of Test: July 18 - 21, 2016

Date of Report: July 21, 2016

Report Number: T1861388 03

Version Number: REV0

TEST REPORT
IEC 62321-2:2013, IEC 62321-1:2013, IEC 62321-3-1:2013,
IEC 62321-5:2013, IEC 62321-4:2013,
IEC 62321:2008, IEC 62321-7-1:2015, IEC 62321-6:2015
Restriction of Hazardous Substance



Report Reference No.: T1861388 03
Tested by (name + signature): Rev Yuan
Approved by (name + signature): Susan Chen
Date of issue.....: July 21, 2016

Testing Laboratory: Shenzhen Alpha Product Testing Co., Ltd.
Address.....: Building B, East Area of Nanchang Second Industrial Zone, Gushu 2nd Road, Bao'an District, Shenzhen 518126, P.R. China
Testing location / procedure: TL [] SMT [] TMP []
Testing location / address.....: (Same as above.)

Applicant's name: Shanghai Anviz Technology Co. Ltd
Address.....: 2th Floor, 4289Jindu Road, Shanghai China

Test specification:
Standard: IEC 62321-2:2013, IEC 62321-1:2013, IEC 62321-3-1:2013, IEC 62321-5:2013, IEC 62321-4:2013, IEC 62321:2008, IEC 62321-7-1:2015, IEC 62321-6:2015
Test procedure: RoHS procedure
Non-standard test method.....: N/A

Test item description: CARD ACCESS CONTROL
Model/Type reference.....: VP30
Trademark: **ANVIZ**
Manufacturer.....: Shanghai Anviz Technology Co. Ltd
Address.....: 2th Floor, 4289Jindu Road, Shanghai China

Possible test case verdicts:
 BL = Below Limit, OL = Over Limit, LOD = Limit of Detection, -- = Not Regulated
 X : the region where further investigation is necessary.
 N.D. = Not Detected (<MDL)
 Negative = absence of CrVI coating(below 0.10µg/cm²), Inconclusive = Grey zone (between 0.10µg/cm² and 0.13µg/cm²), Positive = presence of CrVI coating(above 0.13µg/cm²)

Testing
Date of receipt of test item: July 18, 2016
Date (s) of performance of tests: July 18 - 21, 2016

General remarks:
 1. The test results presented in this report relate only to the object tested.
 2. This report shall not be reproduced, except in full, without the written approval of the Issuing testing laboratory.
 3. When placing electrical equipment on the market, every importer should indicate on the electrical equipment his name, Registered trade name or registered trade mark and the postal address at which he can be contacted. Exceptions should be provided for in cases where the size or nature of the electrical equipment does not allow it. This includes cases where the importer would have to open the packaging to put his name and address on the electrical equipment.

TEST REPORT

Report No.: T1861388 03

Date: July 21, 2016

Page 2 of 23

Test Result

With reference to IEC 62321-2:2013, review was performed for the samples disjoined from the submitted articles.

With reference to IEC 62321-1:2013, tests were performed for the samples indicated by the photos in the report.

(1) As per IEC 62321-3-1:2013, screened by XRF spectroscopy.

No.	Component Description	Test Item	XRF Result
1	Black plastic shell	Cadmium (Cd)	BL
		Lead (Pb)	BL
		Mercury (Hg)	BL
		Chromium (Cr)	BL
		Bromine (Br)	BL
2	Transparent plastic block of shell	Cadmium (Cd)	BL
		Lead (Pb)	BL
		Mercury (Hg)	BL
		Chromium (Cr)	BL
		Bromine (Br)	BL
3	Blue plastic key-press of shell	Cadmium (Cd)	BL
		Lead (Pb)	BL
		Mercury (Hg)	BL
		Chromium (Cr)	BL
		Bromine (Br)	BL
4	Black plastic key-press of shell	Cadmium (Cd)	BL
		Lead (Pb)	BL
		Mercury (Hg)	BL
		Chromium (Cr)	BL
		Bromine (Br)	BL
5	Screw	Cadmium (Cd)	BL
		Lead (Pb)	BL
		Mercury (Hg)	BL
		Chromium (Cr)	BL
		Bromine (Br)	--
6	Silver color metal frame of toggle switch	Cadmium (Cd)	BL
		Lead (Pb)	BL
		Mercury (Hg)	BL
		Chromium (Cr)	BL
		Bromine (Br)	--
7	Black plastic handle of toggle switch	Cadmium (Cd)	BL
		Lead (Pb)	BL
		Mercury (Hg)	BL
		Chromium (Cr)	BL
		Bromine (Br)	BL

TEST REPORT

Report No.: T1861388 03

Date: July 21, 2016

Page 3 of 23

Test Result

No.	Component Description	Test Item	XRF Result
8	Silver color metal frame of network interface	Cadmium (Cd)	BL
		Lead (Pb)	BL
		Mercury (Hg)	BL
		Chromium (Cr)	BL
		Bromine (Br)	--
9	Black plastic base of network interface	Cadmium (Cd)	BL
		Lead (Pb)	BL
		Mercury (Hg)	BL
		Chromium (Cr)	BL
		Bromine (Br)	BL
10	Gray plastic of connecting wire terminal base	Cadmium (Cd)	BL
		Lead (Pb)	BL
		Mercury (Hg)	BL
		Chromium (Cr)	BL
		Bromine (Br)	BL
11	Silver color metal sheet of connecting wire terminal base	Cadmium (Cd)	BL
		Lead (Pb)	BL
		Mercury (Hg)	BL
		Chromium (Cr)	BL
		Bromine (Br)	--
12	Black wire covering of connecting row line	Cadmium (Cd)	BL
		Lead (Pb)	BL
		Mercury (Hg)	BL
		Chromium (Cr)	BL
		Bromine (Br)	BL
13	White plastic terminal of connecting row line	Cadmium (Cd)	BL
		Lead (Pb)	BL
		Mercury (Hg)	BL
		Chromium (Cr)	BL
		Bromine (Br)	BL
14	Gray wire covering of gray row line	Cadmium (Cd)	BL
		Lead (Pb)	BL
		Mercury (Hg)	BL
		Chromium (Cr)	BL
		Bromine (Br)	BL
15	Silver color metal washer of shell key-press	Cadmium (Cd)	BL
		Lead (Pb)	BL
		Mercury (Hg)	BL
		Chromium (Cr)	BL
		Bromine (Br)	--

TEST REPORT

Report No.: T1861388 03

Date: July 21, 2016

Page 4 of 23

Test Result

No.	Component Description	Test Item	XRF Result
16	Transparent backlight paster of screen	Cadmium (Cd)	BL
		Lead (Pb)	BL
		Mercury (Hg)	BL
		Chromium (Cr)	BL
		Bromine (Br)	BL
17	Red wire covering of connecting wire(screen LED)	Cadmium (Cd)	BL
		Lead (Pb)	BL
		Mercury (Hg)	BL
		Chromium (Cr)	BL
		Bromine (Br)	BL
18	Black wire covering of connecting wire(screen LED)	Cadmium (Cd)	BL
		Lead (Pb)	BL
		Mercury (Hg)	BL
		Chromium (Cr)	BL
		Bromine (Br)	BL
19	Screen	Cadmium (Cd)	BL
		Lead (Pb)	BL
		Mercury (Hg)	BL
		Chromium (Cr)	BL
		Bromine (Br)	BL
20	Silver color metal of USB terminal base	Cadmium (Cd)	BL
		Lead (Pb)	BL
		Mercury (Hg)	BL
		Chromium (Cr)	BL
		Bromine (Br)	--
21	Black plastic of USB terminal base	Cadmium (Cd)	BL
		Lead (Pb)	BL
		Mercury (Hg)	BL
		Chromium (Cr)	BL
		Bromine (Br)	BL
22	Silver color metal sheet of microswitch	Cadmium (Cd)	BL
		Lead (Pb)	BL
		Mercury (Hg)	BL
		Chromium (Cr)	BL
		Bromine (Br)	--
23	Black plastic shell of microswitch	Cadmium (Cd)	BL
		Lead (Pb)	BL
		Mercury (Hg)	BL
		Chromium (Cr)	BL
		Bromine (Br)	BL

TEST REPORT

Report No.: T1861388 03

Date: July 21, 2016

Page 5 of 23

Test Result

No.	Component Description	Test Item	XRF Result
24	Copper metal sheet of microswitch	Cadmium (Cd)	BL
		Lead (Pb)	BL
		Mercury (Hg)	BL
		Chromium (Cr)	BL
		Bromine (Br)	--
25	Brownness plastic of button cell base	Cadmium (Cd)	BL
		Lead (Pb)	BL
		Mercury (Hg)	BL
		Chromium (Cr)	BL
		Bromine (Br)	BL
26	Copper electrode of button cell base	Cadmium (Cd)	BL
		Lead (Pb)	BL
		Mercury (Hg)	BL
		Chromium (Cr)	BL
		Bromine (Br)	--
27	Black plastic of USB wire terminal	Cadmium (Cd)	BL
		Lead (Pb)	BL
		Mercury (Hg)	BL
		Chromium (Cr)	BL
		Bromine (Br)	BL
28	Silver color metal of big USB terminal(USB wire)	Cadmium (Cd)	BL
		Lead (Pb)	BL
		Mercury (Hg)	BL
		Chromium (Cr)	BL
		Bromine (Br)	--
29	White plastic of big USB terminal (USB wire)	Cadmium (Cd)	BL
		Lead (Pb)	BL
		Mercury (Hg)	BL
		Chromium (Cr)	BL
		Bromine (Br)	BL
30	Black thick wire of USB wire	Cadmium (Cd)	BL
		Lead (Pb)	BL
		Mercury (Hg)	BL
		Chromium (Cr)	BL
		Bromine (Br)	BL
31	Red thin wire covering of USB wire	Cadmium (Cd)	BL
		Lead (Pb)	BL
		Mercury (Hg)	BL
		Chromium (Cr)	BL
		Bromine (Br)	BL

TEST REPORT

Report No.: T1861388 03

Date: July 21, 2016

Page 6 of 23

Test Result

No.	Component Description	Test Item	XRF Result
32	Black thin wire covering of USB wire	Cadmium (Cd)	BL
		Lead (Pb)	BL
		Mercury (Hg)	BL
		Chromium (Cr)	BL
		Bromine (Br)	BL
33	White thin wire covering of USB wire	Cadmium (Cd)	BL
		Lead (Pb)	BL
		Mercury (Hg)	BL
		Chromium (Cr)	BL
		Bromine (Br)	BL
34	Green thin wire covering of USB wire	Cadmium (Cd)	BL
		Lead (Pb)	BL
		Mercury (Hg)	BL
		Chromium (Cr)	BL
		Bromine (Br)	BL
35	Silver color metal of small USB terminal(USB wire)	Cadmium (Cd)	BL
		Lead (Pb)	BL
		Mercury (Hg)	BL
		Chromium (Cr)	BL
		Bromine (Br)	--
36	Black plastic of small USB terminal(USB wire)	Cadmium (Cd)	BL
		Lead (Pb)	BL
		Mercury (Hg)	BL
		Chromium (Cr)	BL
		Bromine (Br)	BL
37	PCB tin solder	Cadmium (Cd)	BL
		Lead (Pb)	BL
		Mercury (Hg)	BL
		Chromium (Cr)	BL
		Bromine (Br)	--
38	Silver color metal frame of reset key-press	Cadmium (Cd)	BL
		Lead (Pb)	BL
		Mercury (Hg)	BL
		Chromium (Cr)	BL
		Bromine (Br)	--
39	Black plastic handle of reset key-press	Cadmium (Cd)	BL
		Lead (Pb)	BL
		Mercury (Hg)	BL
		Chromium (Cr)	BL
		Bromine (Br)	BL

TEST REPORT

Report No.: T1861388 03

Date: July 21, 2016

Page 7 of 23

Test Result

No.	Component Description	Test Item	XRF Result
40	Relay	Cadmium (Cd)	BL
		Lead (Pb)	BL
		Mercury (Hg)	BL
		Chromium (Cr)	BL
		Bromine (Br)	BL
41	Capacitor	Cadmium (Cd)	BL
		Lead (Pb)	BL
		Mercury (Hg)	BL
		Chromium (Cr)	BL
		Bromine (Br)	BL
42	Capacitor	Cadmium (Cd)	BL
		Lead (Pb)	BL
		Mercury (Hg)	BL
		Chromium (Cr)	BL
		Bromine (Br)	BL
43	Capacitor	Cadmium (Cd)	BL
		Lead (Pb)	BL
		Mercury (Hg)	BL
		Chromium (Cr)	BL
		Bromine (Br)	BL
44	Capacitor	Cadmium (Cd)	BL
		Lead (Pb)	BL
		Mercury (Hg)	BL
		Chromium (Cr)	BL
		Bromine (Br)	BL
45	Diode	Cadmium (Cd)	BL
		Lead (Pb)	BL
		Mercury (Hg)	BL
		Chromium (Cr)	BL
		Bromine (Br)	BL
46	Diode	Cadmium (Cd)	BL
		Lead (Pb)	BL
		Mercury (Hg)	BL
		Chromium (Cr)	BL
		Bromine (Br)	BL
47	Resistor	Cadmium (Cd)	BL
		Lead (Pb)	BL
		Mercury (Hg)	BL
		Chromium (Cr)	BL
		Bromine (Br)	BL

TEST REPORT

Report No.: T1861388 03

Date: July 21, 2016

Page 8 of 23

Test Result

No.	Component Description	Test Item	XRF Result
48	Resistor	Cadmium (Cd)	BL
		Lead (Pb)	BL
		Mercury (Hg)	BL
		Chromium (Cr)	BL
		Bromine (Br)	BL
49	Resistor	Cadmium (Cd)	BL
		Lead (Pb)	BL
		Mercury (Hg)	BL
		Chromium (Cr)	BL
		Bromine (Br)	BL
50	Resistor	Cadmium (Cd)	BL
		Lead (Pb)	BL
		Mercury (Hg)	BL
		Chromium (Cr)	BL
		Bromine (Br)	BL
51	Resistor	Cadmium (Cd)	BL
		Lead (Pb)	BL
		Mercury (Hg)	BL
		Chromium (Cr)	BL
		Bromine (Br)	BL
52	Resistor	Cadmium (Cd)	BL
		Lead (Pb)	BL
		Mercury (Hg)	BL
		Chromium (Cr)	BL
		Bromine (Br)	BL
53	Triode	Cadmium (Cd)	BL
		Lead (Pb)	BL
		Mercury (Hg)	BL
		Chromium (Cr)	BL
		Bromine (Br)	BL
54	Triode	Cadmium (Cd)	BL
		Lead (Pb)	BL
		Mercury (Hg)	BL
		Chromium (Cr)	BL
		Bromine (Br)	BL
55	Inductor	Cadmium (Cd)	BL
		Lead (Pb)	BL
		Mercury (Hg)	BL
		Chromium (Cr)	BL
		Bromine (Br)	BL

TEST REPORT

Report No.: T1861388 03

Date: July 21, 2016

Page 9 of 23

Test Result

No.	Component Description	Test Item	XRF Result
56	Paster fuse	Cadmium (Cd)	BL
		Lead (Pb)	BL
		Mercury (Hg)	BL
		Chromium (Cr)	BL
		Bromine (Br)	BL
57	Paster fuse	Cadmium (Cd)	BL
		Lead (Pb)	BL
		Mercury (Hg)	BL
		Chromium (Cr)	BL
		Bromine (Br)	BL
58	LED	Cadmium (Cd)	BL
		Lead (Pb)	BL
		Mercury (Hg)	BL
		Chromium (Cr)	BL
		Bromine (Br)	BL
59	IC	Cadmium (Cd)	BL
		Lead (Pb)	BL
		Mercury (Hg)	BL
		Chromium (Cr)	BL
		Bromine (Br)	BL
60	IC	Cadmium (Cd)	BL
		Lead (Pb)	BL
		Mercury (Hg)	BL
		Chromium (Cr)	BL
		Bromine (Br)	BL
61	PCB	Cadmium (Cd)	BL
		Lead (Pb)	BL
		Mercury (Hg)	BL
		Chromium (Cr)	BL
		Bromine (Br)	BL
62	Buzzer	Cadmium (Cd)	BL
		Lead (Pb)	BL
		Mercury (Hg)	BL
		Chromium (Cr)	BL
		Bromine (Br)	BL
63	Capacitor	Cadmium (Cd)	BL
		Lead (Pb)	BL
		Mercury (Hg)	BL
		Chromium (Cr)	BL
		Bromine (Br)	BL

TEST REPORT

Report No.: T1861388 03

Date: July 21, 2016

Page 10 of 23

Test Result

No.	Component Description	Test Item	XRF Result
64	Capacitor	Cadmium (Cd)	BL
		Lead (Pb)	BL
		Mercury (Hg)	BL
		Chromium (Cr)	BL
		Bromine (Br)	BL
65	Capacitor	Cadmium (Cd)	BL
		Lead (Pb)	BL
		Mercury (Hg)	BL
		Chromium (Cr)	BL
		Bromine (Br)	BL
66	Capacitor	Cadmium (Cd)	BL
		Lead (Pb)	BL
		Mercury (Hg)	BL
		Chromium (Cr)	BL
		Bromine (Br)	BL
67	Capacitor	Cadmium (Cd)	BL
		Lead (Pb)	BL
		Mercury (Hg)	BL
		Chromium (Cr)	BL
		Bromine (Br)	BL
68	Diode	Cadmium (Cd)	BL
		Lead (Pb)	BL
		Mercury (Hg)	BL
		Chromium (Cr)	BL
		Bromine (Br)	BL
69	Diode	Cadmium (Cd)	BL
		Lead (Pb)	BL
		Mercury (Hg)	BL
		Chromium (Cr)	BL
		Bromine (Br)	BL
70	Resistor	Cadmium (Cd)	BL
		Lead (Pb)	BL
		Mercury (Hg)	BL
		Chromium (Cr)	BL
		Bromine (Br)	BL
71	Resistor	Cadmium (Cd)	BL
		Lead (Pb)	BL
		Mercury (Hg)	BL
		Chromium (Cr)	BL
		Bromine (Br)	BL

TEST REPORT

Report No.: T1861388 03

Date: July 21, 2016

Page 11 of 23

Test Result

No.	Component Description	Test Item	XRF Result
72	Resistor	Cadmium (Cd)	BL
		Lead (Pb)	BL
		Mercury (Hg)	BL
		Chromium (Cr)	BL
		Bromine (Br)	BL
73	Resistor	Cadmium (Cd)	BL
		Lead (Pb)	BL
		Mercury (Hg)	BL
		Chromium (Cr)	BL
		Bromine (Br)	BL
74	Resistor	Cadmium (Cd)	BL
		Lead (Pb)	BL
		Mercury (Hg)	BL
		Chromium (Cr)	BL
		Bromine (Br)	BL
75	Resistor	Cadmium (Cd)	BL
		Lead (Pb)	BL
		Mercury (Hg)	BL
		Chromium (Cr)	BL
		Bromine (Br)	BL
76	Exclusion	Cadmium (Cd)	BL
		Lead (Pb)	BL
		Mercury (Hg)	BL
		Chromium (Cr)	BL
		Bromine (Br)	BL
77	Triode	Cadmium (Cd)	BL
		Lead (Pb)	BL
		Mercury (Hg)	BL
		Chromium (Cr)	BL
		Bromine (Br)	BL
78	Triode	Cadmium (Cd)	BL
		Lead (Pb)	BL
		Mercury (Hg)	BL
		Chromium (Cr)	BL
		Bromine (Br)	BL
79	Inductor	Cadmium (Cd)	BL
		Lead (Pb)	BL
		Mercury (Hg)	BL
		Chromium (Cr)	BL
		Bromine (Br)	BL

TEST REPORT

Report No.: T1861388 03

Date: July 21, 2016

Page 12 of 23

Test Result

No.	Component Description	Test Item	XRF Result
80	Inductor	Cadmium (Cd)	BL
		Lead (Pb)	BL
		Mercury (Hg)	BL
		Chromium (Cr)	BL
		Bromine (Br)	BL
81	Inductor	Cadmium (Cd)	BL
		Lead (Pb)	BL
		Mercury (Hg)	BL
		Chromium (Cr)	BL
		Bromine (Br)	BL
82	Crystal	Cadmium (Cd)	BL
		Lead (Pb)	BL
		Mercury (Hg)	BL
		Chromium (Cr)	BL
		Bromine (Br)	--
83	Crystal	Cadmium (Cd)	BL
		Lead (Pb)	BL
		Mercury (Hg)	BL
		Chromium (Cr)	BL
		Bromine (Br)	--
84	Crystal	Cadmium (Cd)	BL
		Lead (Pb)	BL
		Mercury (Hg)	BL
		Chromium (Cr)	BL
		Bromine (Br)	--
85	LED	Cadmium (Cd)	BL
		Lead (Pb)	BL
		Mercury (Hg)	BL
		Chromium (Cr)	BL
		Bromine (Br)	BL
86	LED	Cadmium (Cd)	BL
		Lead (Pb)	BL
		Mercury (Hg)	BL
		Chromium (Cr)	BL
		Bromine (Br)	BL
87	IC	Cadmium (Cd)	BL
		Lead (Pb)	BL
		Mercury (Hg)	BL
		Chromium (Cr)	BL
		Bromine (Br)	BL

TEST REPORT

Report No.: T1861388 03

Date: July 21, 2016

Page 13 of 23

Test Result

No.	Component Description	Test Item	XRF Result
88	IC	Cadmium (Cd)	BL
		Lead (Pb)	BL
		Mercury (Hg)	BL
		Chromium (Cr)	BL
		Bromine (Br)	BL
89	IC	Cadmium (Cd)	BL
		Lead (Pb)	BL
		Mercury (Hg)	BL
		Chromium (Cr)	BL
		Bromine (Br)	BL
90	IC	Cadmium (Cd)	BL
		Lead (Pb)	BL
		Mercury (Hg)	BL
		Chromium (Cr)	BL
		Bromine (Br)	BL
91	IC	Cadmium (Cd)	BL
		Lead (Pb)	BL
		Mercury (Hg)	BL
		Chromium (Cr)	BL
		Bromine (Br)	BL
92	PCB	Cadmium (Cd)	BL
		Lead (Pb)	BL
		Mercury (Hg)	BL
		Chromium (Cr)	BL
		Bromine (Br)	BL
93	Screen brown FPC	Cadmium (Cd)	BL
		Lead (Pb)	BL
		Mercury (Hg)	BL
		Chromium (Cr)	BL
		Bromine (Br)	BL
94	Screen paster	Cadmium (Cd)	BL
		Lead (Pb)	BL
		Mercury (Hg)	BL
		Chromium (Cr)	BL
		Bromine (Br)	BL
95	Screen paster	Cadmium (Cd)	BL
		Lead (Pb)	BL
		Mercury (Hg)	BL
		Chromium (Cr)	BL
		Bromine (Br)	BL

TEST REPORT

Report No.: T1861388 03

Date: July 21, 2016

Page 14 of 23

Test Result

No.	Component Description	Test Item	XRF Result
96	Screen LED	Cadmium (Cd)	BL
		Lead (Pb)	BL
		Mercury (Hg)	BL
		Chromium (Cr)	BL
		Bromine (Br)	BL
97	Screen LED PCB	Cadmium (Cd)	BL
		Lead (Pb)	BL
		Mercury (Hg)	BL
		Chromium (Cr)	BL
		Bromine (Br)	BL
98	Gray wire covering of copper wire coil connecting wire	Cadmium (Cd)	BL
		Lead (Pb)	BL
		Mercury (Hg)	BL
		Chromium (Cr)	BL
		Bromine (Br)	BL
99	Copper wire coil	Cadmium (Cd)	BL
		Lead (Pb)	BL
		Mercury (Hg)	BL
		Chromium (Cr)	BL
		Bromine (Br)	--
100	Capacitor	Cadmium (Cd)	BL
		Lead (Pb)	BL
		Mercury (Hg)	BL
		Chromium (Cr)	BL
		Bromine (Br)	BL
101	Capacitor	Cadmium (Cd)	BL
		Lead (Pb)	BL
		Mercury (Hg)	BL
		Chromium (Cr)	BL
		Bromine (Br)	BL
102	Diode	Cadmium (Cd)	BL
		Lead (Pb)	BL
		Mercury (Hg)	BL
		Chromium (Cr)	BL
		Bromine (Br)	BL
103	Resistor	Cadmium (Cd)	BL
		Lead (Pb)	BL
		Mercury (Hg)	BL
		Chromium (Cr)	BL
		Bromine (Br)	BL

TEST REPORT

Report No.: T1861388 03

Date: July 21, 2016

Page 15 of 23

Test Result

No.	Component Description	Test Item	XRF Result
104	Resistor	Cadmium (Cd)	BL
		Lead (Pb)	BL
		Mercury (Hg)	BL
		Chromium (Cr)	BL
		Bromine (Br)	BL
105	Resistor	Cadmium (Cd)	BL
		Lead (Pb)	BL
		Mercury (Hg)	BL
		Chromium (Cr)	BL
		Bromine (Br)	BL
106	Triode	Cadmium (Cd)	BL
		Lead (Pb)	BL
		Mercury (Hg)	BL
		Chromium (Cr)	BL
		Bromine (Br)	BL
107	IC	Cadmium (Cd)	BL
		Lead (Pb)	BL
		Mercury (Hg)	BL
		Chromium (Cr)	BL
		Bromine (Br)	BL
108	IC	Cadmium (Cd)	BL
		Lead (Pb)	BL
		Mercury (Hg)	BL
		Chromium (Cr)	BL
		Bromine (Br)	BL
109	IC	Cadmium (Cd)	BL
		Lead (Pb)	BL
		Mercury (Hg)	BL
		Chromium (Cr)	BL
		Bromine (Br)	BL
110	PCB	Cadmium (Cd)	BL
		Lead (Pb)	BL
		Mercury (Hg)	BL
		Chromium (Cr)	BL
		Bromine (Br)	BL
111	Screw	Cadmium (Cd)	BL
		Lead (Pb)	BL
		Mercury (Hg)	BL
		Chromium (Cr)	BL
		Bromine (Br)	--

TEST REPORT

Report No.: T1861388 03

Date: July 21, 2016

Page 16 of 23

Test Result

Remark:

- (1) (a) There are the results on total Br while test items on restricted substances are PBBs and PBDEs. There is the result on total Cr while test item on restricted substances is Cr(VI).
 (b) Results are obtained by EDXRF for primary screening, and further chemical testing by ICP-OES (for Cd, Pb, Hg), UV-Vis (for Cr(VI)) and GC-MS (for PBBs, PBDEs) is recommended to be performed, if the concentration exceeds the below warning value according to IEC62321 (unit: mg/kg).

Element	Polymer Material	Metallic Material	Composite Material
Cadmium (Cd)	$BL \leq (70-3\sigma) < X < (130+3\sigma) \leq OL$	$BL \leq (70-3\sigma) < X < (130+3\sigma) \leq OL$	$LOD < X < (150+3\sigma) \leq OL$
Lead (Pb)	$BL \leq (700-3\sigma) < X < (1300+3\sigma) \leq OL$	$BL \leq (700-3\sigma) < X < (1300+3\sigma) \leq OL$	$BL \leq (500-3\sigma) < X < (1500+3\sigma) \leq OL$
Mercury (Hg)	$BL \leq (700-3\sigma) < X < (1300+3\sigma) \leq OL$	$BL \leq (700-3\sigma) < X < (1300+3\sigma) \leq OL$	$BL \leq (500-3\sigma) < X < (1500+3\sigma) \leq OL$
Bromine (Br)	$BL \leq (300-3\sigma) < X$	--	$BL \leq (250-3\sigma) < X$
Chromium (Cr)	$BL \leq (700-3\sigma) < X$	$BL \leq (700-3\sigma) < X$	$BL \leq (500-3\sigma) < X$

(c) mg/kg = milligram per kilogram

- (2) (a) mg/kg = 0.0001%, MDL = Method Detection Limit.

(b) Test Method for Chemical Confirmation

Test Item	Test Method	Test Instrument	MDL (mg/kg)	EU RoHS Limit (mg/kg)
Cd	IEC 62321-5:2013	ICP-OES	2	100
Pb	IEC 62321-5:2013	ICP-OES	2	1000
Hg	IEC 62321-4:2013	ICP-OES	2	1000
Cr(VI)	IEC 62321:2008 (non-metal)	UV-Vis	1	1000
	IEC 62321-7-1:2015 (metal)	UV-Vis	0.1($\mu\text{g}/\text{cm}^2$)	0.1($\mu\text{g}/\text{cm}^2$)
PBBs, PBDEs	IEC 62321-6:2015	GC-MS	5	1000

- (c) According to IEC 62321-7-1:2015, result on Cr(VI) for metal sample is shown as Positive/Inconclusive/Negative.

TEST REPORT

Tested sample photos



TEST REPORT

Tested sample photos



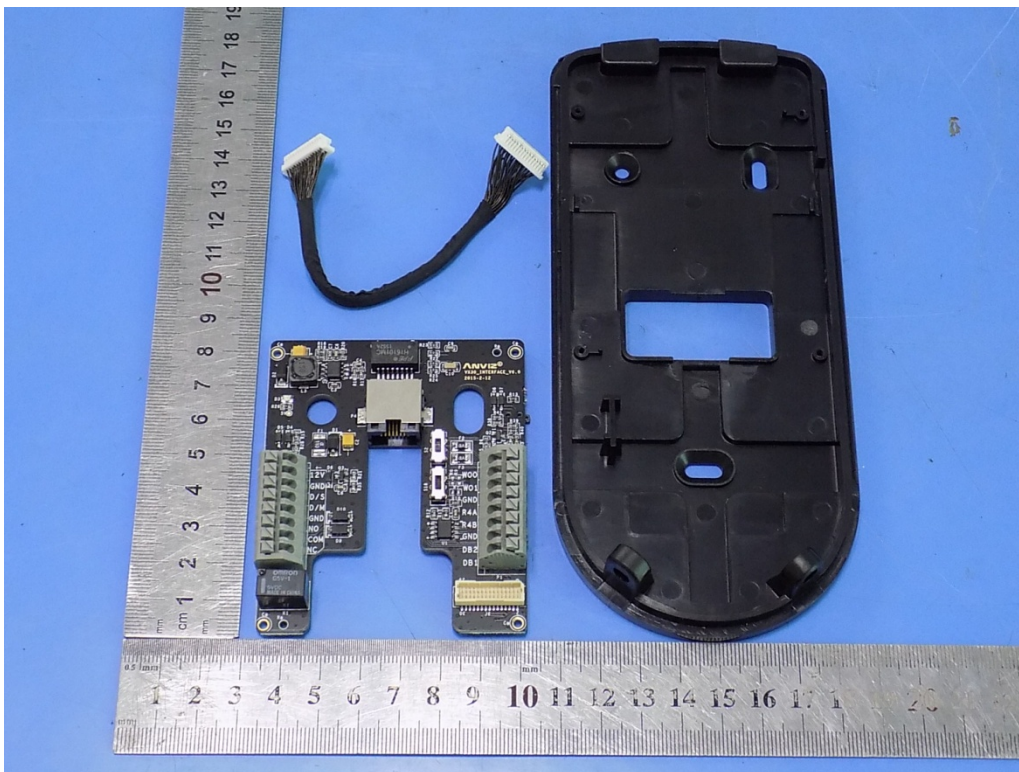
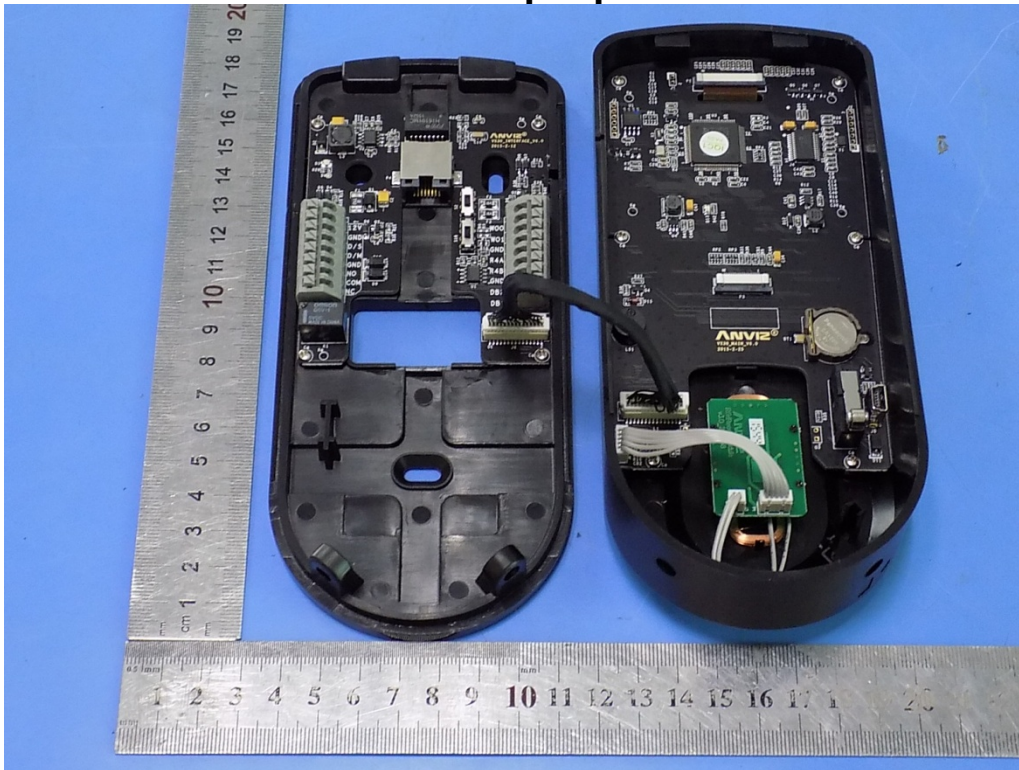
TEST REPORT

Report No.: T1861388 03

Date: July 21, 2016

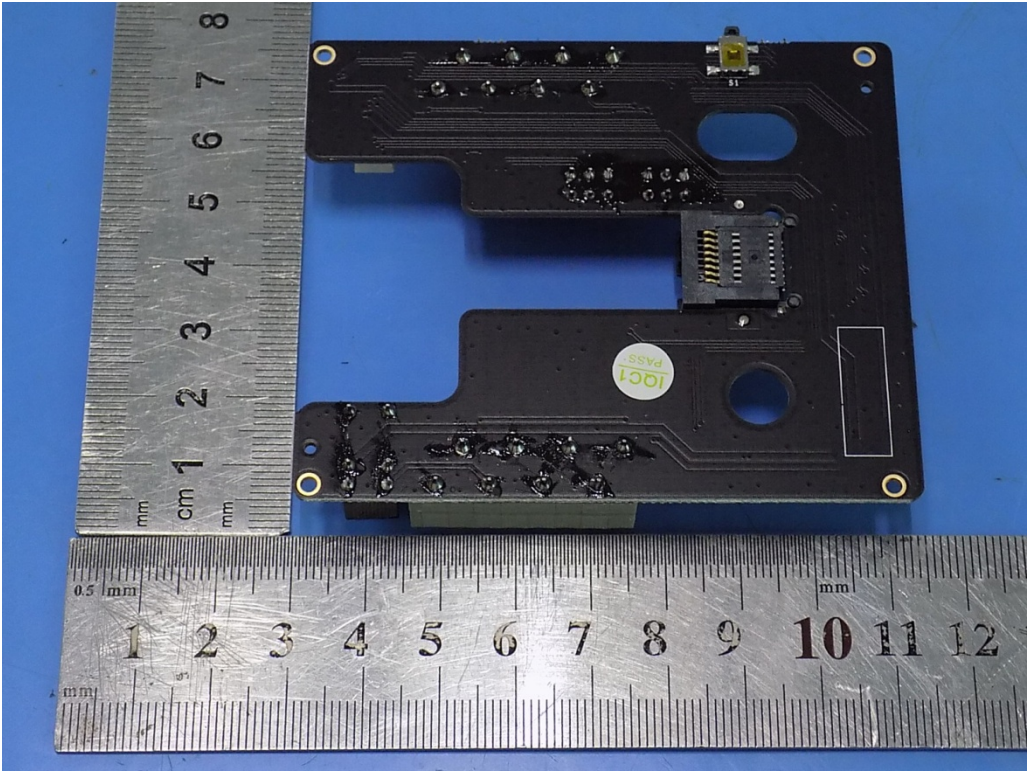
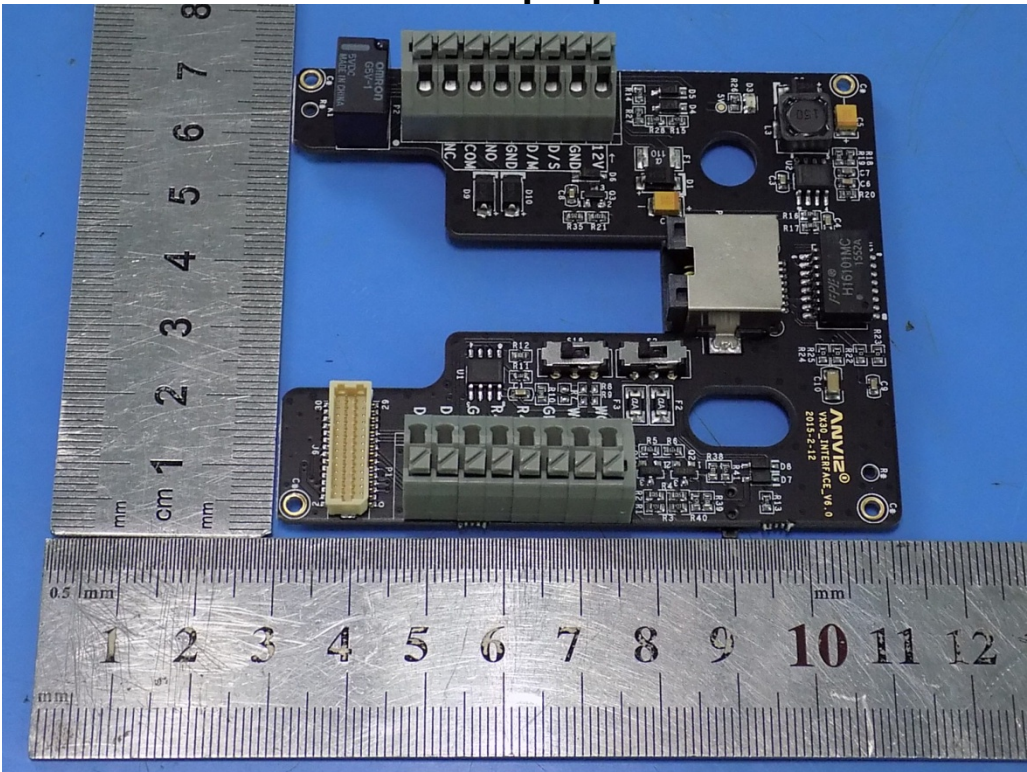
Page 19 of 23

Tested sample photos



TEST REPORT

Tested sample photos



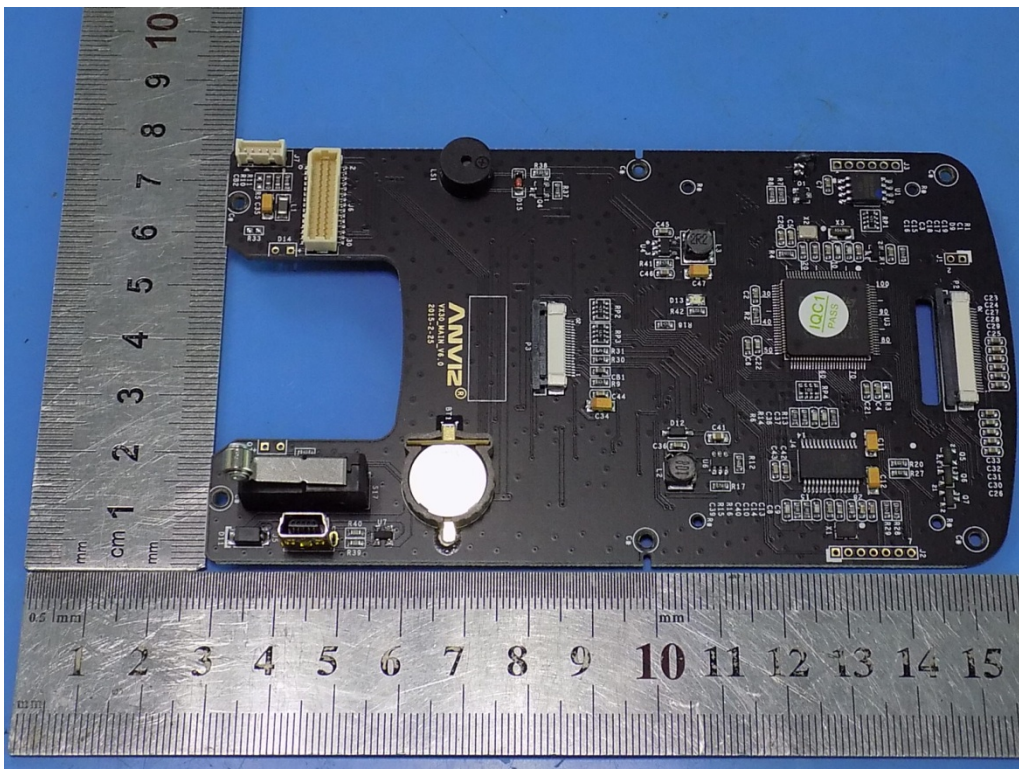
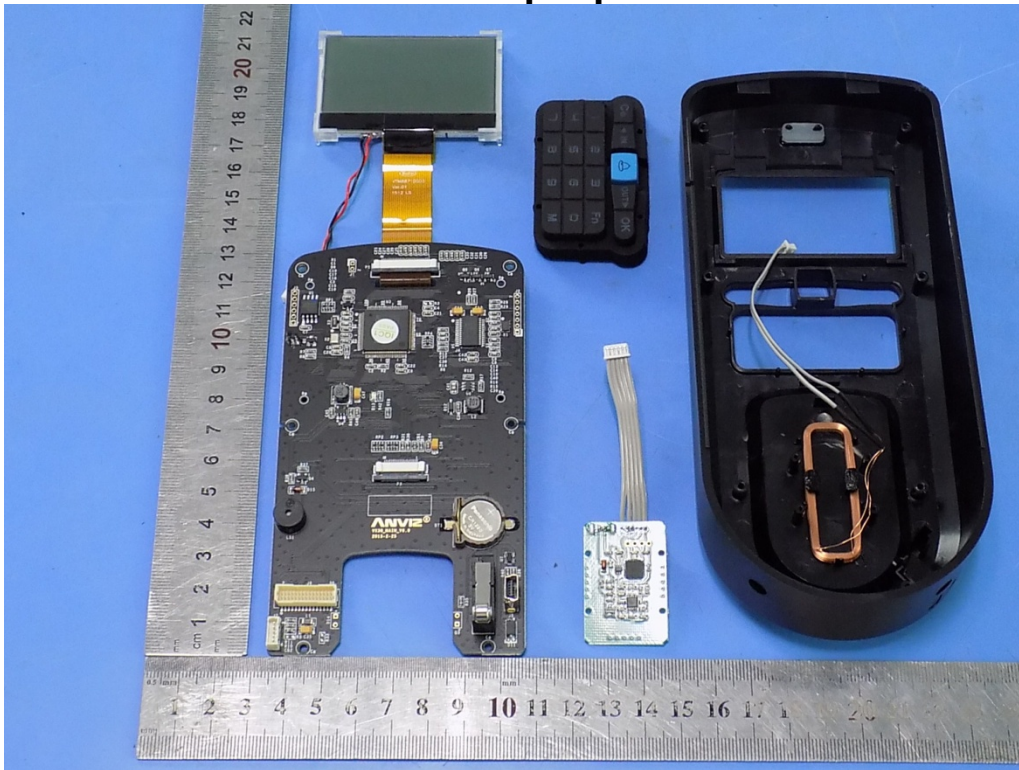
TEST REPORT

Report No.: T1861388 03

Date: July 21, 2016

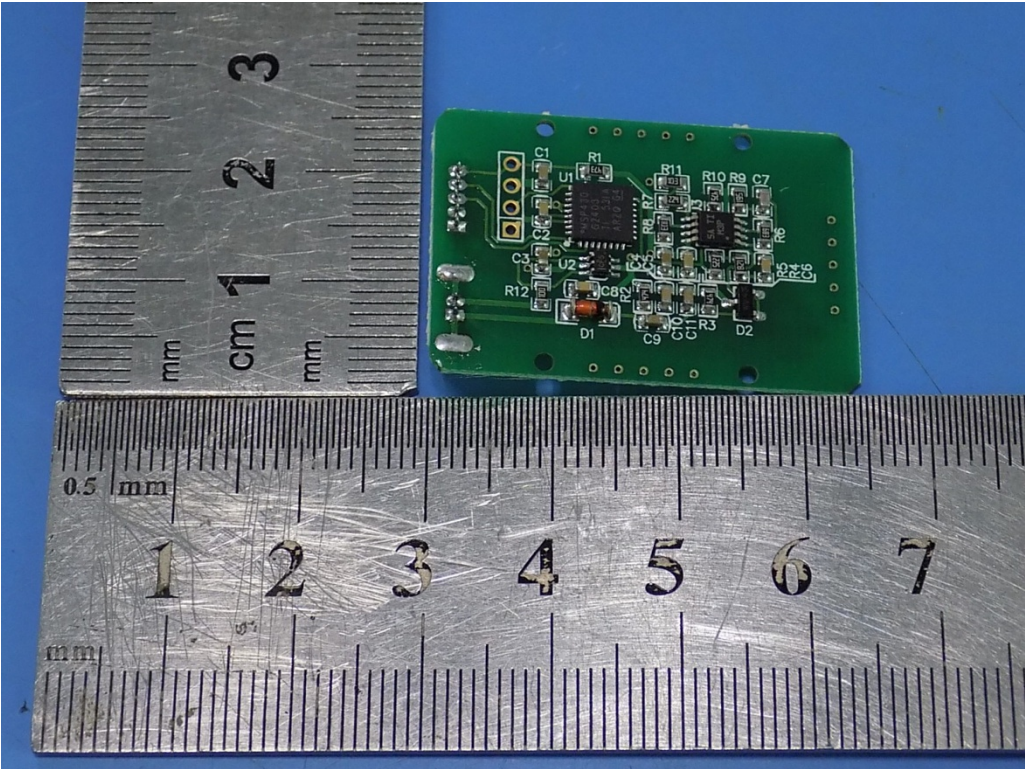
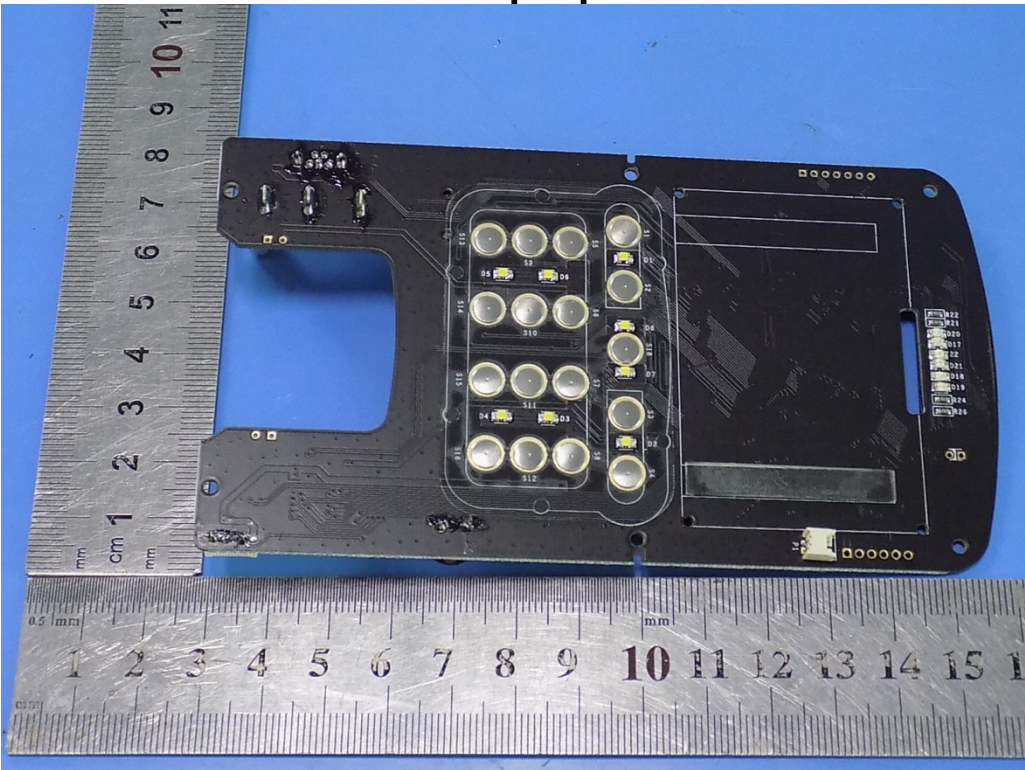
Page 21 of 23

Tested sample photos



TEST REPORT

Tested sample photos



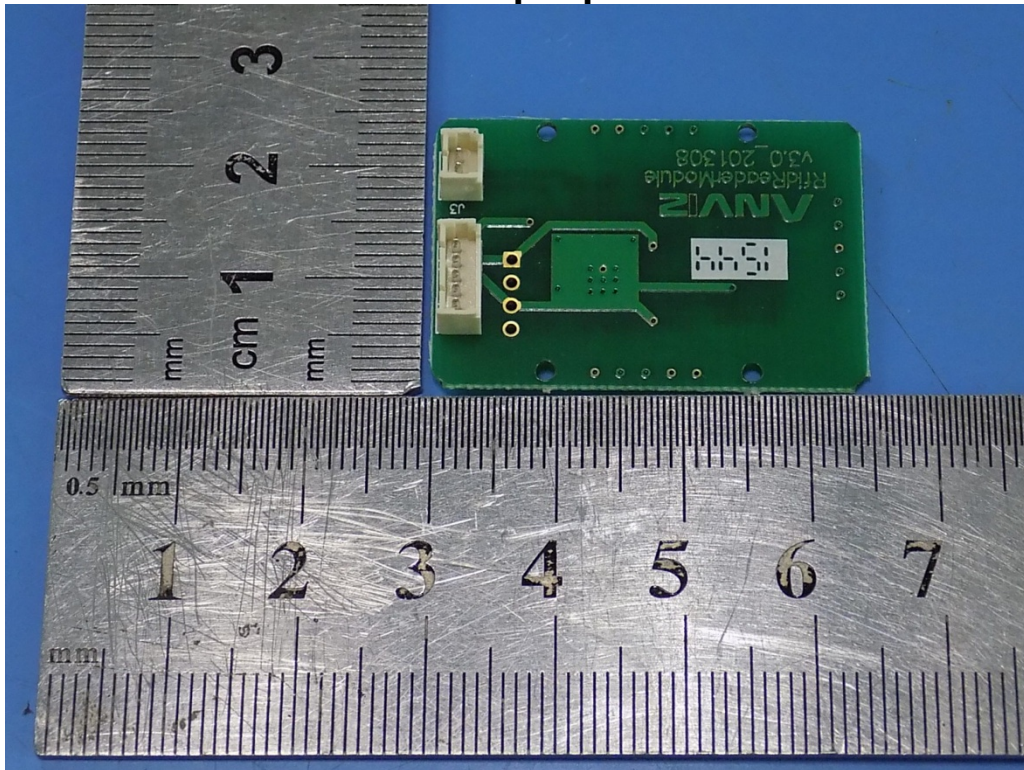
TEST REPORT

Report No.: T1861388 03

Date: July 21, 2016

Page 23 of 23

Tested sample photos



--- End of report ---