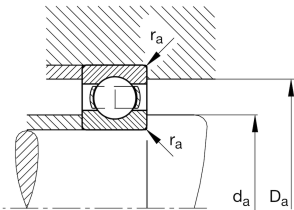
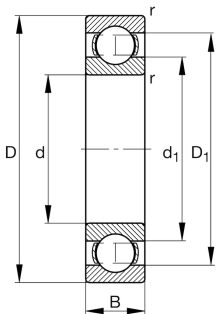


**FAG****6228-C3**

## Deep groove ball bearing

Deep groove ball bearing 62, single row, steel  
sheet metal cage

## Technical information



## Your current product variant

Sealing	Without	Not sealed
Cage	JN	Steel sheet metal
Tolerance class	PN	Normal (PN)
Dimensional / heat stabilization	S1	Rings dimensional stabilized up to 200°
Lubricant	Without	Bearing not greased
Radial internal clearance	C3 (Group 3)	Internal clearance larger than CN
Bore type	Z	Cylindrical

## Main Dimensions &amp; Performance Data

d	140 mm	Bore diameter
D	250 mm	Outside diameter
B	42 mm	Width
$C_r$	188,000 N	Basic dynamic load rating, radial
$C_{0r}$	165,000 N	Basic static load rating, radial
$C_{ur}$	8,400 N	Fatigue load limit, radial
$n_G$	3,600 1/min	Limiting speed
$n_{gr}$	3,600 1/min	Reference speed
$\approx m$	7.804 kg	Weight



Mounting dimensions

$d_{a\ min}$	154 mm	Minimum diameter shaft shoulder
$D_{a\ max}$	236 mm	Maximum diameter of housing shoulder
$r_{a\ max}$	2.5 mm	Maximum fillet radius

Dimensions

$r_{\ min}$	3 mm	Minimum chamfer dimension
$D_{\ 1}$	213.8 mm	Shoulder diameter outer ring
$d_{\ 1}$	175.9 mm	Shoulder diameter inner ring

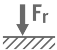





Temperature range

$T_{\ min}$	-30 °C	Operating temperature min.
$T_{\ max}$	200 °C	Operating temperature max.

Calculation factors

$f_{\ 0}$	14.9	Calculation factor
-----------	------	--------------------

Characteristics

	Radial load
	Axial load in one direction
	Axial load in two directions
	Grease Lubrication
	Oil Lubrication
	Not sealed