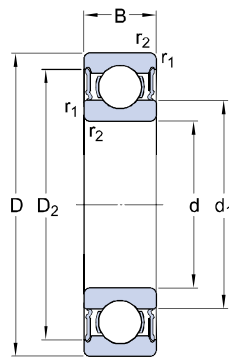




Deep groove ball bearings, single row, stainless steel

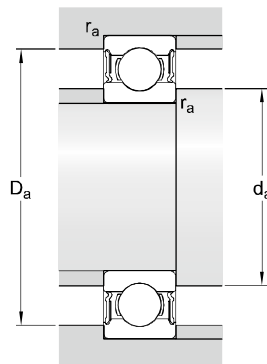
W 6201-2RS1/VP311

Dimensions



d		12	mm
D		32	mm
B		10	mm
d ₁	≈	18.5	mm
D ₂	≈	27.9	mm
r _{1,2}	mi n.	0.6	mm

Abutment dimensions



d _a	mi n.	16	mm
d _a	ma x.	18	mm
D _a	ma x.	28.5	mm
r _a	ma x.	0.6	mm

Calculation data

Basic dynamic load rating	C	5.7	kN
Basic static load rating	C ₀	3	kN
Fatigue load limit	P _u	0.12	kN
Limiting speed		15000	r/min
Calculation factor	k _r	0.03	
Calculation factor	f ₀	12	

Mass

Mass bearing		0.0362	kg
--------------	--	--------	----