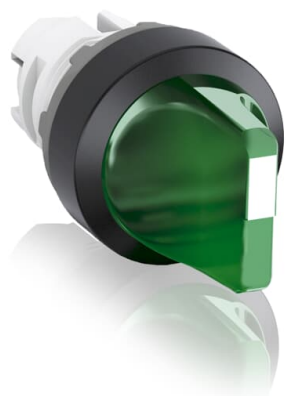


PRODUCT-DETAILS

# M2SS1-11G

## M2SS1-11G Selector Switch



### General Information

Extended Product Type	M2SS1-11G
Product ID	1SFA611200R1102
EAN	7320500283332
Catalog Description	M2SS1-11G Selector Switch
Long Description	Modular Selector Switch - 2-Pos Maintained - Short handle - Green - Illuminated - Black plastic - No contact block

### Ordering

E-Number (Finland)	2338283
E-Number (Norway)	4372402
E-Number (Sweden)	3715802
EAN	7320500283332
Minimum Order Quantity	10 piece
Customs Tariff Number	8536501999

### Dimensions

Product Net Width	0.03 m
Product Net Height	0.03 m
Product Net Depth / Length	0.05 m
Product Net Weight	0.024 kg

---

**Container Information**


---

Package Level 1 Units	bag 1 piece
Package Level 1 Width	0.11 m
Package Level 1 Height	0.03 m
Package Level 1 Depth / Length	0.15 m
Package Level 1 Gross Weight	0.024 kg
Package Level 1 EAN	7320500283332

---



---

**Environmental**


---

Ambient Air Temperature	Operation -25 ... +70 °C Storage -40 ... +85 °C
RoHS Status	Following EU Directive 2011/65/EU and Amendment 2015/863 July 22, 2019

---



---

**Additional Information**


---

Actuator Type	Short handle
Bezel Material	Black Plastic
Block	No contact block
Color	Green
Degree of Protection	Front IP66
Function	Maintained
Illumination	Illuminated
Maintained Positions	B, C
Mechanical Durability	0.5 million
Mounting Position	Horizontally mounted
Product Main Type	M2SS1
Product Name	Selector Switch
Product Range	Modular
Product Type	M2SS
RoHS Date	0635 4
Sub-Function	2-position

---



---

**Certificates and Declarations (Document Number)**


---

cULus Certificate	9AKK107046A9925
Data Sheet, Technical Information	1SFC151007C02_
Declaration of Conformity - CE	2CMT2015-005452
DNV GL Certificate	E-14107
Environmental Information	1SAC200072H0001
Instructions and Manuals	1SFC151011M0201
RoHS Information	2CMT2015-005452

---



---

**Classifications**


---

ETIM 4	EC002024 - Accessories for control circuit devices
ETIM 5	EC000222 - Front element for selector switch
ETIM 6	EC000222 - Front element for selector switch
ETIM 7	EC000222 - Front element for selector switch

---

Object Classification Code	S
UNSPSC	39121500
WEEE Category	Product Not in WEEE Scope
eClass	V11.0 : 27371213

---

## Categories

---

Low Voltage Products and Systems → Control Products → Pilot Devices → Modular Plastic Range

