

**1 B**

Code	No.	(*)	O ^{AF}	L	a ₁	a ₂	b ₁	b ₂	h	↕	⊞	£
6005120	1 B 1/4AF		1/4	100	5.0	3.4	10.2	16.2	9.5	16	5	6.45
6005200	1 B 5/16AF		5/16	125	6.5	4.0	12.5	19.2	11.5	27	5	6.55
6005390	1 B 3/8AF		3/8	148	8.2	4.7	14.8	22.2	14.0	45	5	7.30
6005470	1 B 7/16AF		7/16	158	9.0	5.0	17.0	25.8	15.0	53	5	7.85
6005550	1 B 1/2AF		1/2	185	10.2	6.0	19.2	29.2	16.5	85	5	8.55
6005630	1 B 9/16AF		9/16	198	11.0	6.3	21.5	32.0	17.5	99	5	9.60
6005710	1 B 5/8AF		5/8	220	12.0	7.0	23.5	36.0	20.0	136	5	10.80
6005980	1 B 11/16AF		11/16	245	13.2	7.7	25.8	40.0	22.5	192	5	12.85
6006010	1 B 3/4AF		3/4	258	13.5	8.0	27.8	42.0	23.5	209	5	13.90
6006280	1 B 13/16AF		13/16	280	14.5	8.7	30.2	45.8	26.0	269	5	16.08
6006360	1 B 7/8AF		7/8	292	14.5	9.0	32.5	48.2	27.0	308	5	19.57
6006440	1 B 15/16AF		15/16	318	15.5	9.5	34.8	52.0	29.5	403	5	21.51
6006520	1 B 1AF		1	340	17.5	10.3	36.8	55.2	32.0	473	5	23.09
6006600	1 B 1.1/16AF		1.1/16	352	17.5	10.5	39.0	58.0	33.0	559	5	23.73
6006790	1 B 1.1/8AF		1.1/8	370	19.5	11.0	41.0	61.8	34.5	587	5	29.06
6006870	1 B 1.1/4AF		1.1/4	412	20.5	11.8	45.8	70.5	39.0	861	5	34.82
6006950	1 B 1.5/16AF		1.5/16	412	20.5	11.8	48.5	70.5	39.0	789	1	36.31
6007090	1 B 1.3/8AF		1.3/8	460	23.5	12.8	51.5	76.2	43.0	1099	1	67.19
6007170	1 B 1.7/16AF		1.7/16	460	23.5	12.8	53.0	76.2	43.0	1085	1	69.36
6007250	1 B 1.1/2AF		1.1/2	460	24.2	13.2	56.0	79.2	43.0	1113	1	70.52
2316390	1 B 1.9/16AF (*)		1.9/16	470	22.0	13.5	62.0	85.0	124.0	1	P.O.A.	

Code	No.	(*)	O ^{AF}	L	a ₁	a ₂	b ₁	b ₂	h	↕	⊞	£
6007330	1 B 1.5/8AF		1.5/8	520	25.5	14.0	60.5	85.0	49.0	1457	1	82.43
2316374	1 B 1.11/16AF (*)		1.11/16	470	22.0	13.5	62.0	85.0	152.0	1	P.O.A.	
6007410	1 B 1.3/4AF		1.3/4	550	27.5	15.0	66.0	95.5	53.0	1896	1	99.88
6007680	1 B 1.13/16AF		1.13/16	550	27.5	15.0	68.0	95.5	53.0	1870	1	101.01
6007760	1 B 1.7/8AF		1.7/8	550	27.5	15.0	69.0	95.5	53.0	1821	1	101.75
2316382	1 B 1.15/16AF (*)		1.15/16	560	26.0	16.5	75.0	103.0	221.0	1	P.O.A.	
6007840	1 B 2AF		2	580	29.5	16.0	74.5	103.0	57.0	2280	1	122.94
6007920	1 B 2.1/16AF		2.1/16	580	29.5	16.0	75.0	103.0	57.0	2250	1	133.00
2316412	1 B 2.1/8AF (*)		2.1/8	610	28.0	84.5	113.0		304.0	1	P.O.A.	
6008060	1 B 2.3/16AF		2.3/16	620	30.5	17.0	82.0	112.5	62.0	2855	1	164.62
6008140	1 B 2.1/4AF		2.1/4	620	30.5	17.0	83.0	112.5	62.0	2820	1	165.92
2316439	1 B 2.5/16AF (*)		2.5/16	660	31.0	20.0	90.0	123.0	344.0	1	P.O.A.	
6008220	1 B 2.3/8AF		2.3/8	660	32.0	18.0	90.0	121.0	67.0	3510	1	236.99
6008300	1 B 2.7/16AF		2.7/16	660	32.0	18.0	91.0	121.0	67.0	3630	1	238.07
2316404	1 B 2.1/2AF (*)		2.1/2	710	33.0	22.0	98.0	133.0	455.0	1	P.O.A.	
2316447	1 B 2.9/16AF (*)		2.9/16	710	33.0	22.0	98.0	133.0	455.0	1	P.O.A.	
2316420	1 B 2.3/4AF (*)		2.3/4	760	35.0	24.0	105.0	143.0	561.0	1	P.O.A.	
2316455	1 B 3AF (*)		3	810	38.0	26.0	110.0	153.0	665.0	1	P.O.A.	
2316471	1 B 3.1/8AF (*)		3.1/8	860	41.0	28.0	119.0	163.0	840.0	1	P.O.A.	
2316463	1 B 3.1/4AF (*)		3.1/4	860	41.0	28.0	19.0	163.0	840.0	1	P.O.A.	

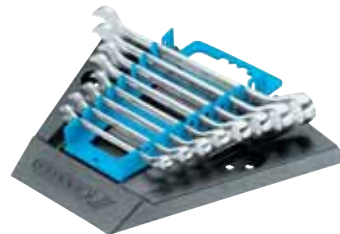
1 B

Code	No.	Whitw.	L	a ₁	a ₂	b ₁	b ₂	h	↕	⊞	£
6009540	1 B 1/8W		1/8	138	7.5	4.3	13.5	21.2	12.5	35	5
6009620	1 B 3/16W		3/16	158	9.0	5.0	17.5	26.0	15.0	53	5
6009700	1 B 1/4W		1/4	185	10.2	6.0	20.0	30.0	16.5	82	5
6009890	1 B 5/16W		5/16	210	11.5	6.7	22.5	34.0	19.0	115	5
6009970	1 B 3/8W		3/8	245	13.2	7.7	26.5	40.0	22.5	190	5
6010040	1 B 7/16W		7/16	280	14.5	8.7	30.2	45.8	26.0	274	5

Code	No.	Whitw.	L	a ₁	a ₂	b ₁	b ₂	h	↕	⊞	£
6010120	1 B 1/2W		1/2	305	15.5	9.3	34.0	50.5	28.0	343	5
6010200	1 B 9/16W		9/16	340	17.5	10.3	37.0	56.0	32.0	477	10
6010390	1 B 5/8W		5/8	370	19.5	11.0	40.2	61.8	34.5	573	1
6010470	1 B 11/16W		11/16	390	19.5	11.2	43.8	65.2	36.0	713	1
6010550	1 B 3/4W		3/4	412	20.5	11.8	48.0	70.5	39.0	803	1

1 B**COMBINATION SPANNER SET**

- Selection of sizes most in use
- Acc. to DIN 3113 Form B, ISO 3318, ISO 7738
- GEDORE vanadium steel 31CrV3, chrome-plated, polished rings
- With same size each end, ring 10° offset from shaft, with UD profile
- WVH = Set in tool holder



WVH 1B-080

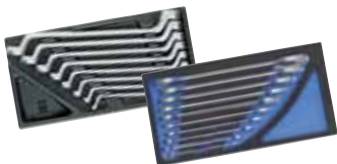
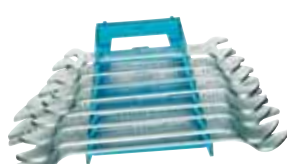


Code	No.	Contents	↕	⊞	£
6011870	1 B-08	10 12 13 14 17 19 22 24	2600	1	
6011950	1 B-080	8 9 10 11 13 14 17 19	1000	1	
1751212	WVH 1 B-080	8 9 10 11 13 14 17 19	1130	1	
6012250	1 B-011	8 9 10 11 12 13 14 15 17 19 22	1190	1	
6013140	1 B-110	7 8 10 11 12 13 14 16 17 18 19	1050	1	
6012170	1 B-012	10 11 12 13 14 17 19 22 24 27 30 32	3390	1	
6012840	1 B-0112	6 7 8 9 10 11 12 13 14 15 17 19	925	1	
6012410	1 B-015	8 9 10 11 12 13 14 15 16 17 18 19 21 22 23	2060	1	
6000160	1 B-0115	6 7 8 9 10 11 12 13 17 19 22 24 27 30 32	3385	1	

Code	No.	Contents	↕	⊞	£
6012680	1 B-017	6 7 8 9 10 11 12 13 14 15 16 17 18 19 20 21 22	2300	1	
6013060	1 B-020	8 9 10 11 12 13 14 15 16 17 18 19 21 22 23 24 26 27 30 32	5500	1	
6012920	1 B-026	6 7 8 9 10 11 12 13 14 15 16 17 18 19 20 21 22 23 24 25 26 27 28 29 30 32	7500	1	



Code	No.	Contents	↕	⊞	£
6013300	1 B-08 A	3/8 7/16 1/2 9/16 5/8 3/4 7/8 1"	1410	1	
6013650	1 B-014 A	5/16 3/8 7/16 1/2 9/16 5/8 11/16 3/4 13/16 7/8 1 1.1/16 1.1/8 1.1/4"	3488	1	

1500 ES / CT**98 - 115****VH 1****52****637****167**