



## Ordering number C11917\_SATU-O

Family	Satu	FWHM	26+42 degrees
Type	Lens array	Efficiency	85 %
LED	LUXEON Rebel ES	cd/lm	2.000
Color	Clear	Gerber File	Available
Diameter	21.8 mm		
Height	8.9 mm		
Style	Round		
Optic Material	PMMA		
Holder Material	-		
Fastening	Pin, glue		
Status	Ready		

**NOTE:** The typical divergence will be changed by different color, chip size and chip position tolerance. The typical total divergence is the full angle measured where the luminous intensity is half of the peak value.



## PRODUCT DATASHEET

### Satu series

last update 5/9/2012

PHILIPS  
LUMILEDS

#### GENERAL INFORMATION

- Product series especially designed & optimized for LUXEON Rebel ES series of LEDs.
- Special care taken to make light distribution as uniform as possible.
- Lens material optical grade PMMA with high UV and temperature resistance. Allows use of high current and temperature conditions.

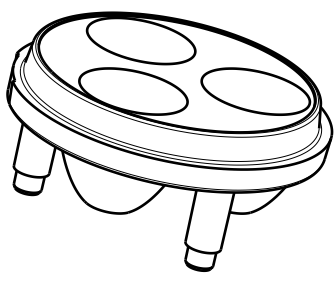
Please find more information about used material from below:

[http://ledil.fi/sites/default/files/Documents/Technical/Material/PMMA%20N%20UL94\\_Yellow%20Card.pdf](http://ledil.fi/sites/default/files/Documents/Technical/Material/PMMA%20N%20UL94_Yellow%20Card.pdf)

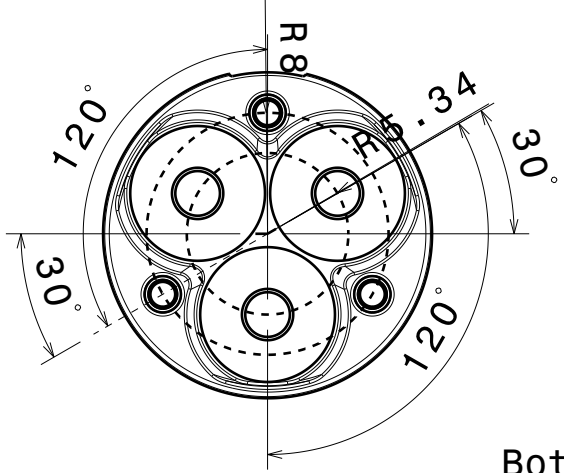
<http://ledil.fi/sites/default/files/Documents/Technical/Material/PMMA%20N%20PLEXIGLAS-Datasheet.pdf>

D C B A

4

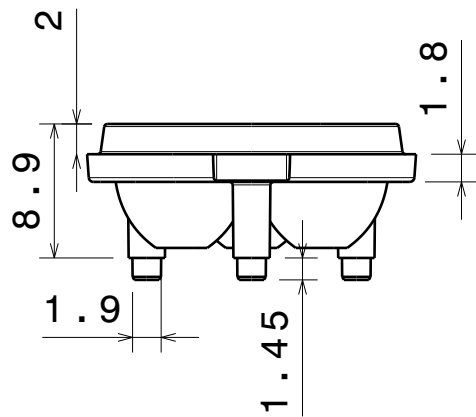


Isometric view



Bottom view

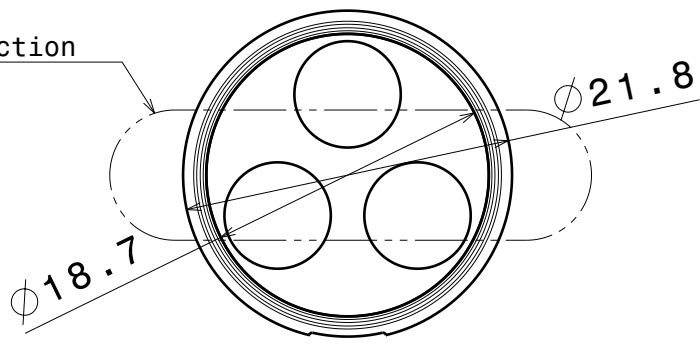
3



Front view

2


Oval beam direction



Top view

Material: PMMA

1

This drawing is our property. It can't be reproduced or communicated without our written agreement.		 LEDIL L T F F e e i n d			
		DRAWING TITLE			
DRAWN BY o	DATE 31.05.2010	Datasheet Satu Lens			
CHECKED BY p	DATE 31.05.2010	SIZE A4	DRAWING NUMBER		REV 1
DESIGNED BY hh/ol	DATE 31.05.2010	SCALE 2 : 1	WEIGHT (g)	SHEET	1 / 1

4

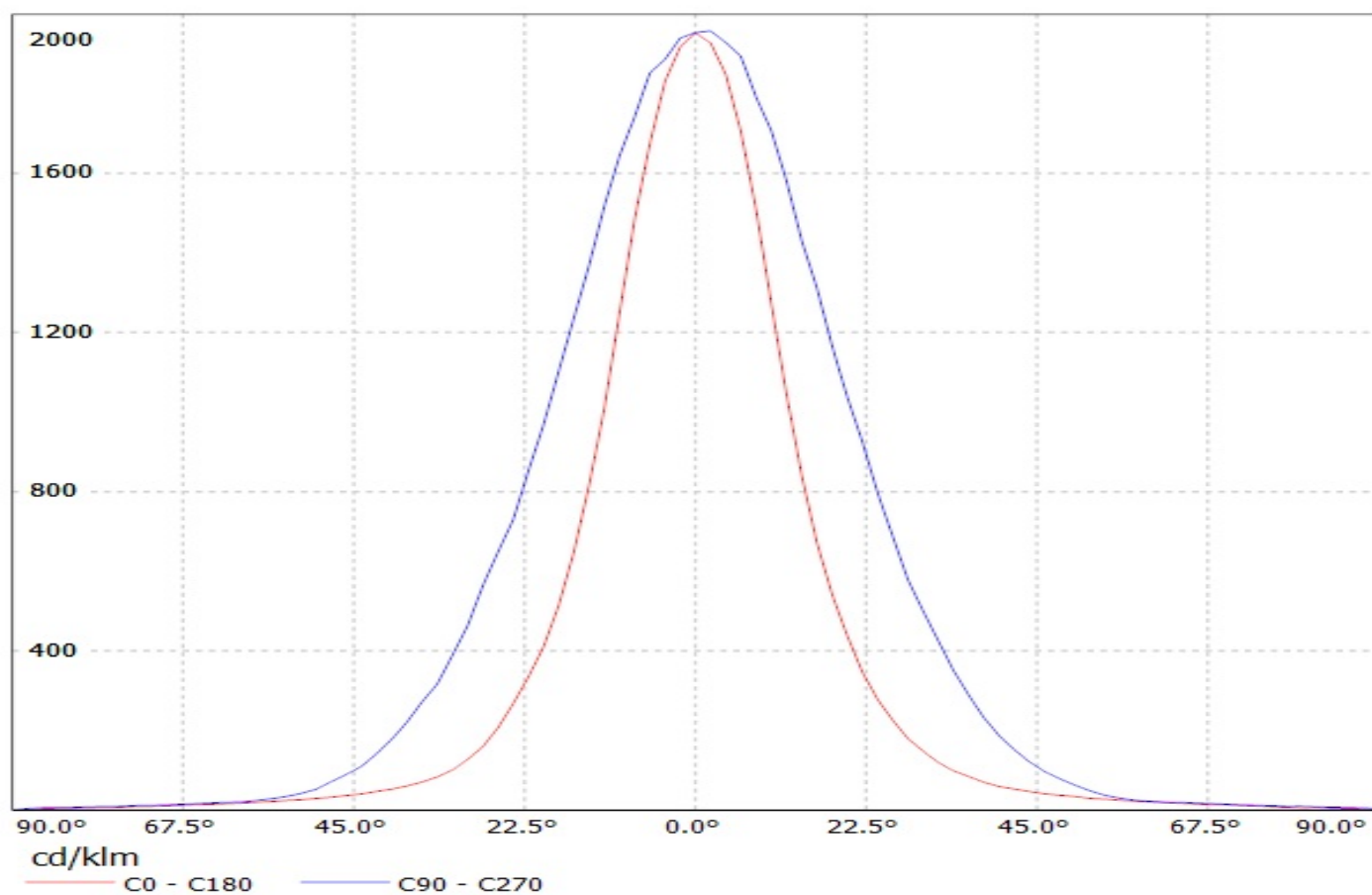
3

2

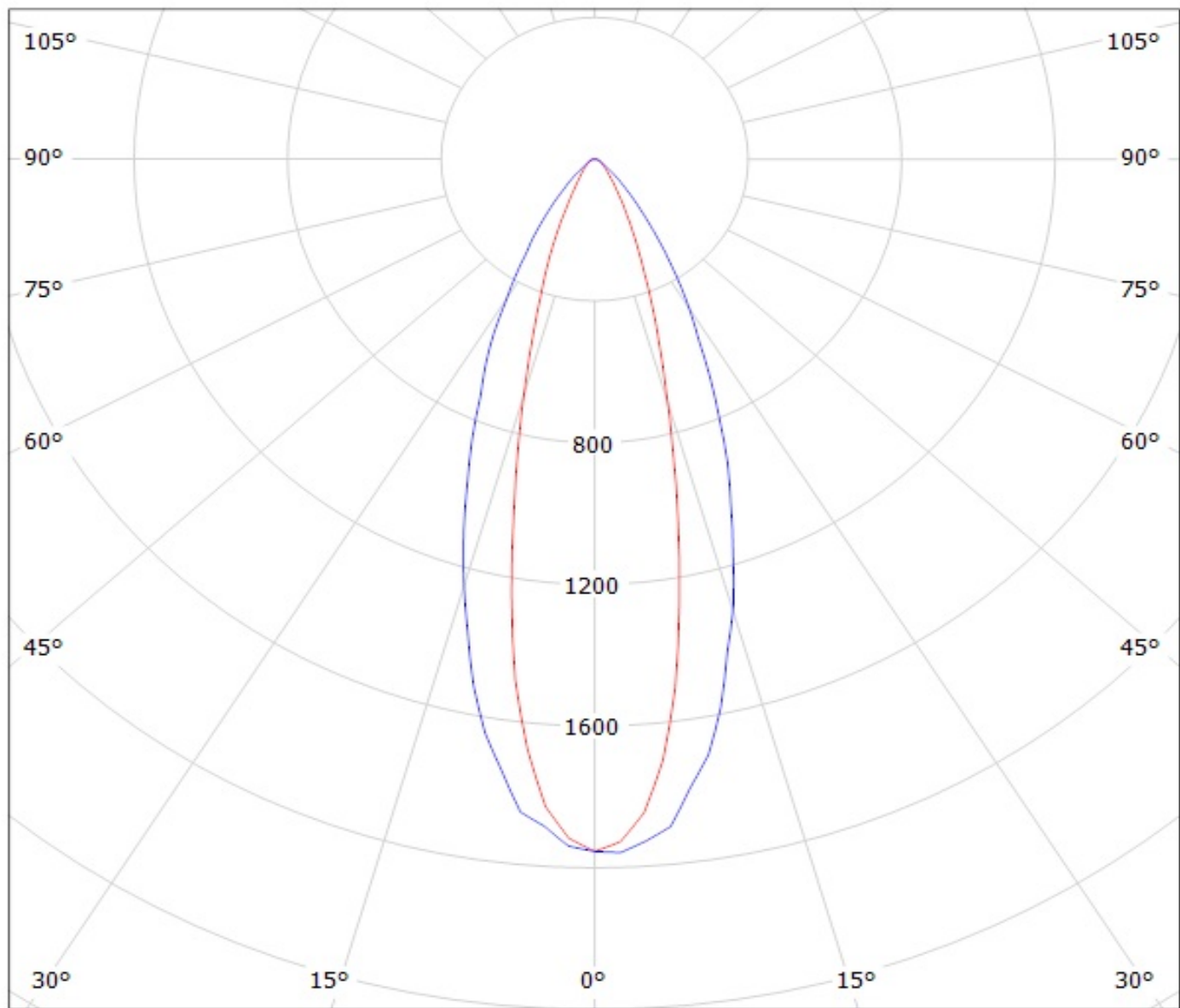
1

D A

Luminaire: Ledil Oy C11917\_SATU-O (Luxeon Rebel-ES 251lm @ 250mA) Efficiency=85%  
Lamps: 1 x Luxeon Rebel-ES 251lm @ 250mA



Luminaire: Ledil Oy C11917\_SATU-O (Luxeon Rebel-ES 251lm @ 250mA) Efficiency=85%  
Lamps: 1 x Luxeon Rebel-ES 251lm @ 250mA



cd/klm

— C0 - C180

— C90 - C270