


## PST 1,3/15-5,0

Order No.: 1933312

The figure shows a 10-position version of the product



Header, Nominal current: 12 A, Rated voltage (III/2): 320 V, Number of positions: 15, Pitch: 5 mm, Color: Black, Contact surface: Tin, Assembly: Soldering, Voltage and current depend on the plug-in terminal block used. The value of the weaker component is always valid. Over 16 pos. upon request. The pin strip is made of highly temperature resistant plastic and is thus suitable for the reflow process.

| Commercial data          |  |
|--------------------------|--|
| EAN                      | <br>4 017918 918804 |
| Note                     | Made-to-order  |
| Pack                     | 50   |
| Customs tariff           | 85366990   |
| Gross weight in pieces   | 2.60 g   |
| Country of Origin        | DE   |
| Catalog page information | Page 538 (CC-2011)   |

### Product notes

WEEE/RoHS-compliant since:  
01/01/2003



Please note that the data given here has been taken from the online catalog. For comprehensive information and data, please refer to the user documentation at <http://www.download.phoenixcontact.com>. The General Terms and Conditions of Use apply to Internet downloads.

| Technical data         |        |
|------------------------|--------|
| Dimensions / positions |        |
| Length                 | 2.8 mm |
| Pitch                  | 5 mm   |
| Dimension a            | 70 mm  |

|                     |        |
|---------------------|--------|
| Number of positions | 15     |
| Pin dimensions      | 1,3 mm |
| Hole diameter       | 1.5 mm |

#### Technical data

|   |                                 |
|---|---------------------------------|
| Range of articles                       | PST 1,3/..-V                    |
| Insulating material group               | IIIa                            |
| Rated surge voltage (III/3)             | 4 kV                            |
| Rated surge voltage (III/2)             | 4 kV                            |
| Rated surge voltage (II/2)              | 4 kV                            |
| Rated voltage (III/2)                   | 320 V                           |
| Rated voltage (II/2)                    | 400 V                           |
| Connection in acc. with standard        | EN-VDE                          |
| Nominal current $I_N$                   | 12 A (depends on the plug used) |
| Nominal voltage $U_N$                   | 250 V                           |
| Maximum load current                    | 12 A (depends on the plug used) |
| Insulating material                     | PA                              |
| Inflammability class according to UL 94 | V0                              |
| Color                                   | Black                           |
| Nominal voltage, UL/CUL Use Group B     | 300 V                           |
| Nominal current, UL/CUL Use Group B     | 16 A                            |
| Nominal voltage, UL/CUL Use Group D     | 300 V                           |
| Nominal current, UL/CUL Use Group D     | 10 A                            |

#### Certificates



Certification

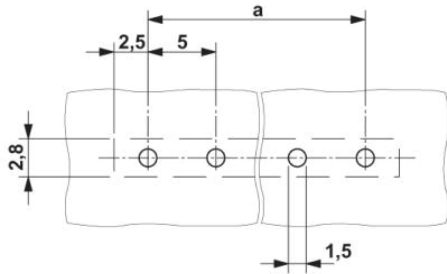
CSA, cULus Recognized, GOST, SEV, CCA

Certifications applied for:

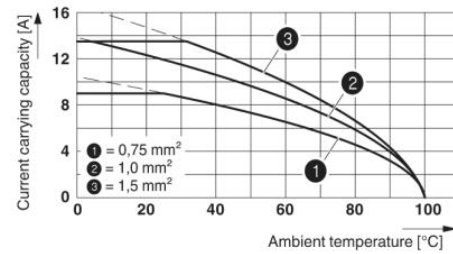
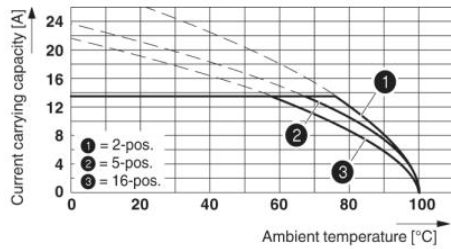
Certification Ex:

## Drawings

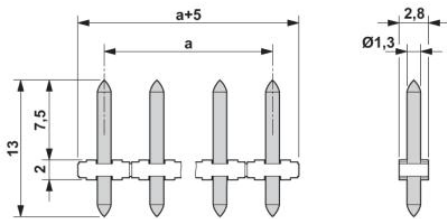
### Drilling plan/solder pad geometry



### Diagram



### Dimensioned drawing



---

**Address**

PHOENIX CONTACT Ltd  
Halesfield 13  
Telford / Shropshire / TF7 4PG,England  
Phone 01952 681 700  
Fax 01952 681 799  
<http://www.phoenixcontact.co.uk>



Phoenix Contact Ltd.  
Technical modifications reserved;