



Image may differ from product. See technical specification for details.

UC 315

Insert bearing with set screw locking and extended inner ring

Insert bearings are based on sealed deep groove ball bearings. This variant is suitable for applications with both constant and alternating directions of rotation. It has an inner ring extended on both sides and is locked onto the shaft by tightening two (set) screws on the inner ring, making it easy to mount.

- Designed for a constant and alternating rotation
- Quick and easy to mount onto the shaft
- Reduce noise and vibration levels

Overview

Dimensions

Shaft diameter	75 mm
Bore diameter	75 mm
Outside diameter	160 mm
Width, total	82 mm
Width, inner ring	82 mm
Width, outer ring	43 mm

Performance

Basic dynamic load rating	114 kN
Basic static load rating	76.5 kN
Limiting speed	2 300 r/min
Note	Limiting speed with shaft tolerance h6

Properties

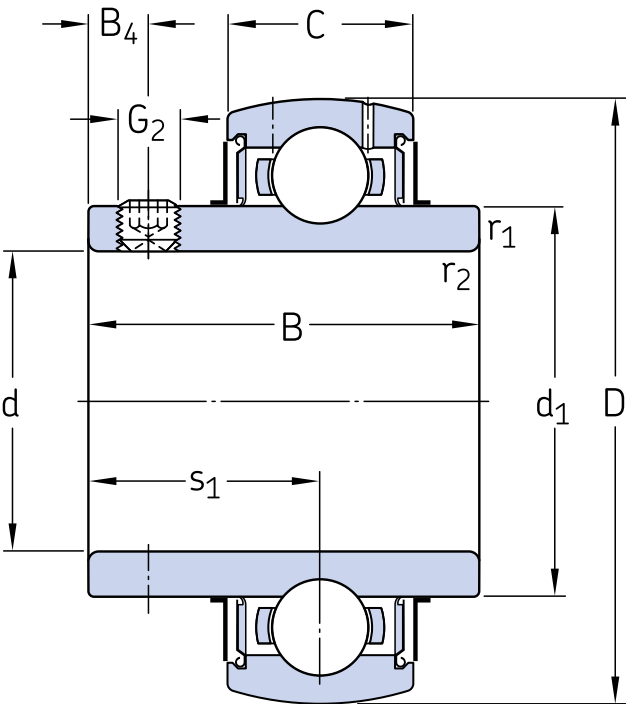
Retaining feature, inner ring	Set screws
Bore type	Cylindrical
Rolling elements	Balls
Outer ring type	Spherical
Inner ring extension	On both sides
Cage	Sheet metal
Rubber seating ring	Without
Material, bearing	Bearing steel
Coating	Without
Sealing	Seal and flinger on both sides
Sealing type	Contact, standard
Lubricant	Grease
Relubrication feature	With

Logistics

Product net weight	4.65 kg
eClass code	23-05-16-02

UNSPSC code	31171536
-------------	----------

Technical specification



Dimensions

d	75 mm	Bore diameter
D	160 mm	Outside diameter
B	82 mm	Width of inner ring
C	43 mm	Width of outer ring
d ₁	≈ 101.3 mm	Outside diameter of inner ring
B ₄	14 mm	Distance face to thread centre
r _{1,2}	min. 3.5 mm	Chamfer dimension of inner ring
S ₁	50 mm	Distance from locking device side face to raceway centre

Calculation data

Basic dynamic load rating	C	114 kN
Basic static load rating	C ₀	76.5 kN
Fatigue load limit	P _u	3 kN
Limiting speed		2 300 r/min
		Limiting speed with shaft tolerance h6

Calculation factor	f_0	13
--------------------	-------	----

Mounting information

Set screw	G ₂	M14x1.5
Hexagonal key size for set screw	N	6 mm
Recommended tightening torque for set screw		38.5 N·m

Tolerances and clearances

GENERAL BEARING SPECIFICATIONS

- [Tolerances: table 1, table 2](#)
- [Radial internal clearance: Standard inner ring, Other bearings](#)

BEARING INTERFACES

- [Shaft tolerances](#)



Terms of use