

Skirting and Dado Trunking System

Technical specification

Electrical

Voltage rating:
63A, 250V a.c.

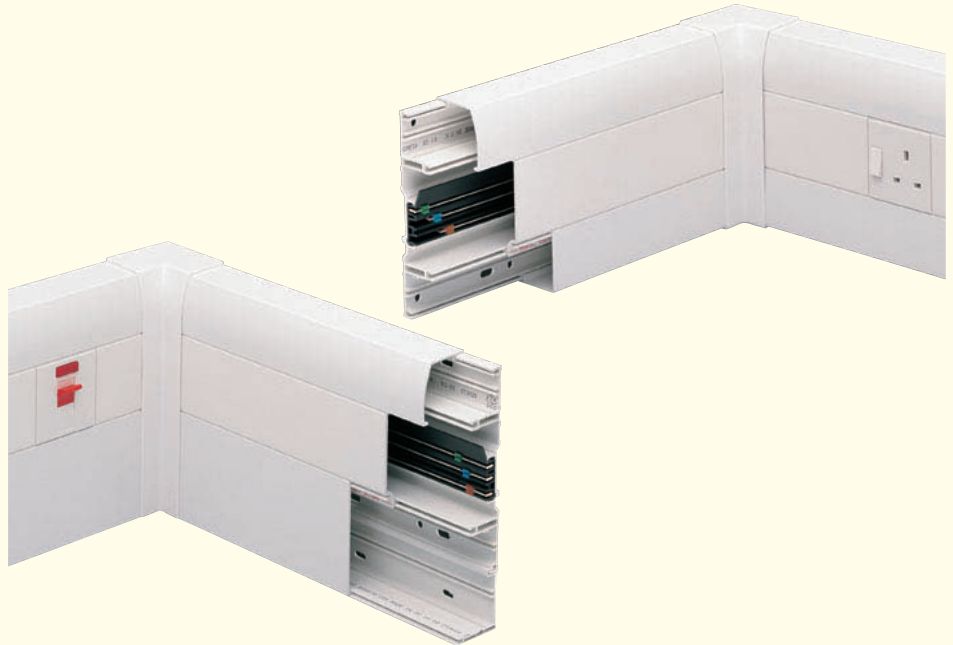
Voltage drop:
L to N = 3.47 mV/A/metre run
L to E = 3.47 mV/A/metre run
N to E = 3.47 mV/A/metre run

Earth fault loop impedance:
L to E = 3.47 mΩ/m run

Conditional short circuit rating:
(Fuse links BS 88 – 100A and BS 1361 100A)

Prospective current 16.5 KA

Mechanical withstand 10.0 KA peak min.



Description

Powerlink Plus is a trunking distribution system which contains within its profile a 63 Amp single phase set of busbars and facilities for carrying telecommunications and data services cables. Co-ordinated within the system is a wide variety of electrical and extra low voltage (ELV) outlets.

On the mains side these include specially designed sockets, both switched and unswitched, non-standard switchsockets, switches, connection units and, via a simple interface, facilities for mounting all standard MK outlets.

ELV outlets include a master telephone socket outlet, an isolated co-axial socket outlet, "handset" telephone linejack outlet, computer sockets, a blank box and cover to accommodate other ELV requirements and, via a simple interface, facilities for mounting all single gang, standard MKELV outlets. Also available are BNC type, LU6C/RJ45 outlets, Euro Outlets and a blank to accommodate other ELV requirements.



Features

- Wide variety of visually and physically compatible mains and ELV outlets
- Complete segregation between mains and ELV
- Stylish and elegant appearance
- Easy to assemble, extend and modify
- Durable and impact resistant
- Attractive styling
- Suitable for skirting or dado mounting
- 3 compartment trunking
- Manufactured to high precision standards
- All extrusions manufactured from 90% recycled material*

For a full range of corresponding products, see pages 309-319 in the product selector.

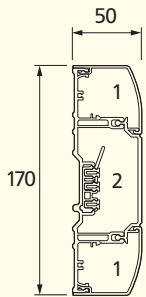
* Based on 2008 consumption.

Skirting and Dado Trunking System

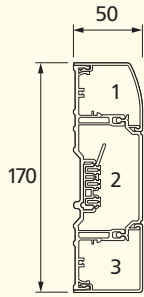
Dimensions (mm)

The dado trunking is divided into three compartments. Two identical outer compartments are mainly for ELV cables with a third central compartment containing the busbars with a cable way above. The cable carrying capacity can be increased by introducing an extension trunking below the surface track.

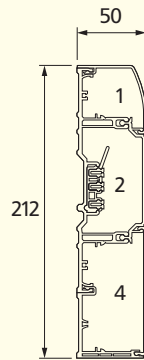
Cross section through Dado trunking



Cross section through Skirting and Dado trunking



Cross section through Skirting and Dado trunking with extension



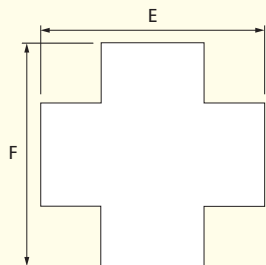
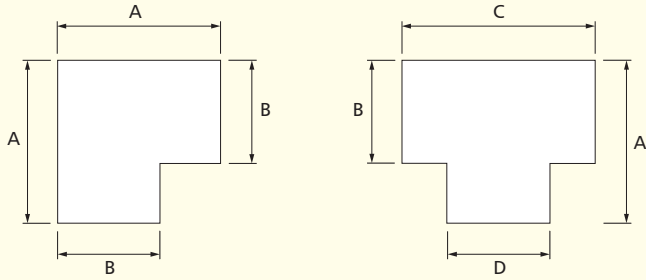
WALL THICKNESS	
Trunking base	2.4mm
Centre compartment cover	2.5mm
Curved cover	1.5mm
Extension cover	2.5mm
Extension base	3.0mm

WEIGHT (KG)			
Type		Number of compartments with screening	
		1	2
Dado trunking without busbar (1903)	2.4	3.0	3.6
Dado trunking with busbar (1963)	3.0	3.6	4.2
Extension trunking (1913)	1.0	2.3	–

POWERLINK PLUS CABLE CAPACITY												
Type of Conductor	Size	Cable Factor	Cmpt 1 (curved)	Cmpt 2 (without busbar)	Cmpt 2 (with busbar)	Cmpt 3 (square)	Cmpt 4 (extension)					
			Full Term CSA 100% Fill (mm²)									
			943	2968	2528	1044	2685					
			Term at 45% Fill (mm²)									
			424	1335	1137	469	1208					
Power Cables			Number of Cables at 45% Fill									
PVC Stranded	1.5mm ²	8.6	49	155	132	54	140					
	2.5mm ²	12.6	33	105	90	37	95					
	4mm ²	16.6	25	80	68	28	72					
	6mm ²	21.2	20	62	53	22	56					
Data Cables			Number of Cables at 45% Fill (a) and Full Capacity (b)									
			a	b	a	b	a	b	a	b	a	b
Cat5E UTP	5.5mm dia.	30.2	14	31	44	98	0	0	15	34	40	88
Cat5E STP	6.0mm dia.	36.0	11	26	37	82	0	0	13	29	33	74
Cat6 UTP	6.5mm dia.	42.2	10	22	31	70	0	0	11	24	28	63
Cat6 STP	7.0mm dia.	49.0	8	19	27	60	0	0	9	21	24	54

Skirting and Dado Trunking System

Components

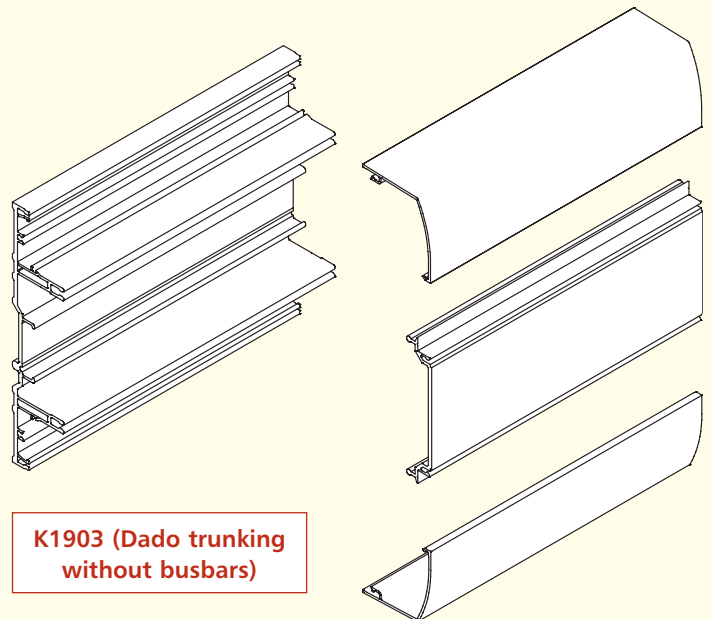


Flat angles and tees

These components are fabricated sections and space must be allowed for their inclusion in runs of trunking. All other components snap on over standard trunking profiles.

DIMENSIONS (MM)					
Flat Angle	A	B	Flat Cross	E	F
Dado	270	170		370	370
Skirting	270	170		–	–
Skirting (with extension)	315	215		–	–

DIMENSIONS (MM)				
Flat Tee	A	B	C	D
Dado	270	170	320	170



K1903 (Dado trunking without busbars)

Skirting and Dado Trunking System

Component selection guide

Trunking	End Cap
K1963	K1904
K1903	K1904
K1962	K1944
K1902	K1944
K1913	K1914

Trunking	Flat Cross
K1963	K1974
K1903	K1974

Trunking	Flat Angle Up	Flat Angle Down
K1963	K1992	K1992
K1903	K1992	K1992
K1962	K1957	K1958
K1902	K1957	K1958
K1916	K1994	K1993

Trunking	Ext Corner
K1963	K1906
K1903	K1906
K1962	K1912
K1902	K1912
K1913	K1916

Trunking	Int Corner
K1963	K1905
K1903	K1905
K1962	K1911
K1902	K1911
K1913	K1915

Trunking	Coupler
K1963	K1908
K1903	K1908
K1962	K1945
K1902	K1945
K1916	K1918

Trunking	Flat Tee Up	Flat Tee Down
K1963	K1973	K1972
K1903	K1973	K1972

Cable link assembly	
1919	

Cable termination	
10mm ²	1923
25mm ²	1924

Plug in busbar coupler	
1925	

* Minimum distance