

SETRON, Switch disconnecter 3LD, emergency switching-off switch, 4- pole, Iu: 32 A, operating power / at AC-23 A 400 V: 11.5 kW, front-mounted, rotary operating mechanism, Red / yellow, central mounting 22.5 mm of the handle



Model	
Product brand name	SETRON
Product designation	3LD Switch disconnecter
Design of the product	EMERGENCY-STOP switch
Display version / for switch position indicator manual operation	1 ON - 0 OFF
Design of the operating mechanism	Short rotary knob
Design of handle	rotary operating mechanism, red/yellow
Type of the driving mechanism / motor drive	No
General technical data	
Number of poles	4
Type of device	fixed mounting
Type of switch	front mounted
Size of switch disconnecter	2
Electrical endurance (switching cycles)	
• at AC-23 A / at 690 V	6 000
I2t value / with closed switch / at 690 V / for combination switch + gG fuse / maximum	9 kA2.s

Let-through I <sub>2t</sub> value / with closed switch / at 440 V / for combination switch + gG fuse / maximum	9 kA <sup>2</sup> .s
Mechanical service life (switching cycles) / typical	100 000
Operating frequency / maximum	50 1/h

### Voltage

Insulation voltage / rated value	690 V
Surge voltage resistance / rated value	6 kV
Operating current / at AC / rated value	32 A
Operating voltage	
<ul style="list-style-type: none"> <li>at AC / at 50/60 Hz / rated value</li> </ul>	690 V

### Protection class

Protection class IP	IP65
Degree of protection NEMA rating	1, 3R, 4X, 12
Protection class IP / on the front	IP65

### Dissipation

Power loss [W]	
<ul style="list-style-type: none"> <li>for rated value of the current / at AC / in hot operating state / per pole</li> </ul>	1.8 W
<ul style="list-style-type: none"> <li>per conductor / typical</li> </ul>	1.8 W

### Current

Operating current	
<ul style="list-style-type: none"> <li>at AC-23 A / at 690 V / rated value</li> </ul>	13 A
<ul style="list-style-type: none"> <li>at AC-23 A / at 400 V / rated value</li> </ul>	22 A
<ul style="list-style-type: none"> <li>at AC-22 A / at 690 V / rated value</li> </ul>	32 A
<ul style="list-style-type: none"> <li>at AC-21 / at 690 V / rated value</li> </ul>	32 A
<ul style="list-style-type: none"> <li>at AC-21 A / at 240 V / rated value</li> </ul>	32 A
<ul style="list-style-type: none"> <li>at AC-21 A / at 440 V / rated value</li> </ul>	32 A
<ul style="list-style-type: none"> <li>at AC-22 A / at 240 V / rated value</li> </ul>	32 A
<ul style="list-style-type: none"> <li>at AC-22 A / at 440 V / rated value</li> </ul>	32 A
<ul style="list-style-type: none"> <li>at AC-23 A / at 240 V / rated value</li> </ul>	22 A
<ul style="list-style-type: none"> <li>at AC-23 A / at 440 V / rated value</li> </ul>	22 A
Operating current / of upstream fuse / rated value	40 A
Let-through current / with closed switch	
<ul style="list-style-type: none"> <li>at 440 V / for combination switch + gG fuse / maximum</li> </ul>	4.5 kA
<ul style="list-style-type: none"> <li>at 690 V / for combination switch + gG fuse / maximum permissible</li> </ul>	4.5 kA
Short-time withstand current (I <sub>cw</sub> )	
<ul style="list-style-type: none"> <li>limited to 1 s / rated value</li> </ul>	640 A
<ul style="list-style-type: none"> <li>at 690 V / limited to 1 s / rated value</li> </ul>	640 A

### Main circuit

Operating frequency	
<ul style="list-style-type: none"> <li>• initial value</li> <li>• Full-scale value</li> </ul>	<p>50 Hz</p> <p>60 Hz</p>
Operating power	
<ul style="list-style-type: none"> <li>• at AC-23 A / at 240 V / rated value</li> <li>• at AC-23 A / at 400 V / at 50/60 Hz / rated value</li> <li>• at AC-23 A / at 400 V / rated value</li> <li>• at AC-23 A / at 440 V / rated value</li> <li>• at AC-23 A / at 690 V / rated value</li> <li>• at AC-3 / at 240 V / rated value</li> <li>• at AC-3 / at 400 V / rated value</li> <li>• at AC-3 / at 690 V / rated value</li> </ul>	<p>6 kW</p> <p>11.5 kW</p> <p>11.5 kW</p> <p>11.5 kW</p> <p>11.5 kW</p> <p>5.5 kW</p> <p>9.5 kW</p> <p>9.5 kW</p>
Operating current / rated value	32 A

### Auxiliary circuit

Number of CO contacts / for auxiliary contacts	0
Number of NC contacts / for auxiliary contacts	0
Number of NO contacts / for auxiliary contacts	0
Operating voltage / of auxiliary contacts / at AC / maximum	500 V
Continuous current / of the auxiliary contact / rated value	10 A
Insulation voltage / of the auxiliary switch / rated value	500 V

### Suitability

Suitability for use	
<ul style="list-style-type: none"> <li>• Main switch</li> <li>• switch disconnecter</li> <li>• EMERGENCY OFF switch</li> <li>• safety switch</li> <li>• maintenance/repair switch</li> </ul>	<p>Yes</p> <p>Yes</p> <p>Yes</p> <p>Yes</p> <p>Yes</p>

### Appearance

Color / of the actuating element	red
----------------------------------	-----

### Product details

<ul style="list-style-type: none"> <li>• Product function / can be locked into OFF position</li> </ul>	Yes
Number of bracket locks / maximum	3
Hasp thickness / of the bracket locks / minimum	4 mm
Hasp thickness / of the bracket locks / maximum	8 mm
Product extension / optional	
<ul style="list-style-type: none"> <li>• motor drive</li> <li>• Voltage trigger</li> </ul>	<p>No</p> <p>No</p>

## Short circuit

Conditional short-circuit current / with line-side fuse protection	
• at 690 V / by gG fuse / rated value	50 kA

## according UL

Operating current / at AC / acc. to UL 508 / rated value	32 A
Operating voltage / at AC / at 50/60 Hz / acc. to UL 508 / rated value	600 V
Active power [hp] / at AC / at 480 V / acc. to UL 508 / rated value	20
Active power [hp] / at AC / at 600 V / acc. to UL 508 / rated value	20
Short-time withstand current (SCCR) / at 600 V / acc. to UL 508	5 kA
Continuous current / of upstream fuse / according to UL / rated value	80 A
Type of fuse / according to UL	RK5

## Number

Number of connectable NC contacts / for auxiliary contacts / attachable / maximum	1
Number of connectable NO contacts / for auxiliary contacts / attachable / maximum	1
Number of connectable CO contacts / for auxiliary contacts / attachable / maximum	0

## Connections

AWG number / as coded connectable conductor cross section / solid	
• maximum	8
• minimum	14
Type of connectable conductor cross-sections / for copper conductor	
• solid	1x (1,5...16mm <sup>2</sup> )
• finely stranded / with core end processing	1x (1,5...10mm <sup>2</sup> )
• stranded	1x (1,5...16mm <sup>2</sup> )
Type of connectable conductor cross-sections / for auxiliary contacts	
• solid	2x (0.75 ... 2.5 mm <sup>2</sup> ), 1x 4 mm <sup>2</sup>
• finely stranded / with core end processing	2x (0.75 ... 1.5 mm <sup>2</sup> ), 1x 2.5 mm <sup>2</sup>
• stranded	2x (0.75 ... 2.5 mm <sup>2</sup> ), 1x 4 mm <sup>2</sup>
Type of electrical connection	
• for main current circuit	box terminal
• for auxiliary contacts	connection terminals

## Requirements

### Design of the fuse link

- for short-circuit protection of the main circuit / required
- for short-circuit protection of the auxiliary switch / required

fuse gL/gG: 40 A

fuse gL/gG: 10 A

## Mechanical Design

### Height

83 mm

### Width

67 mm

### Depth

116.5 mm

### Mounting type

Built-in unit fixed-mounted version

### Mounting type

- front mounting with 4-hole attachment
- front mounting with central attachment
- rail mounting

No

Yes

No

### Net weight

253 g

## Environmental conditions

### Ambient temperature / during operation

- minimum
- maximum

-25 °C

55 °C

### Ambient temperature / during storage / minimum

-25 °C

## Certificates

### Reference code

- acc. to DIN EN 61346-2
- acc. to DIN EN 81346-2

S

SF

## General Product Approval

## Declaration of Conformity



CCC



CSA



UL



VDE

[Miscellaneous](#)



EG-Konf.

### Test Certificates

[Special Test Certificate](#)

### Shipping Approval



LRS

### other

[Environmental Conformations](#)

## Further information

**Information- and Downloadcenter (Catalogs, Brochures,...)**

<http://www.siemens.com/lowvoltage/catalogs>

**Industry Mall (Online ordering system)**

<https://mall.industry.siemens.com/mall/en/en/Catalog/product?mlfb=3LD2254-1TL53>

**Service&Support (Manuals, Certificates, Characteristics, FAQs,...)**

<https://support.industry.siemens.com/cs/ww/en/ps/3LD2254-1TL53>

**Image database (product images, 2D dimension drawings, 3D models, device circuit diagrams, ...)**

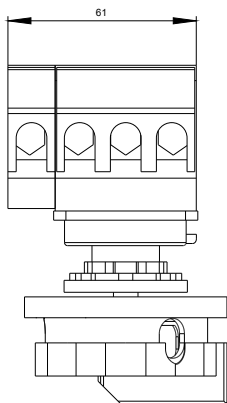
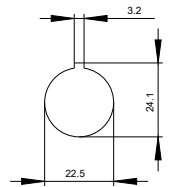
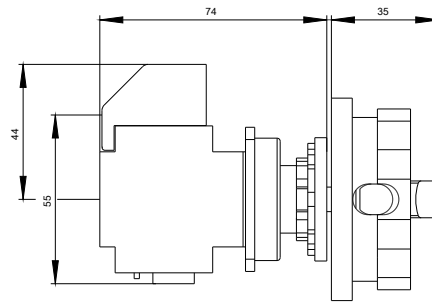
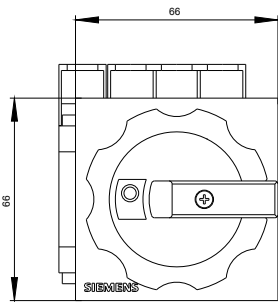
[http://www.automation.siemens.com/bilddb/cax\\_en.aspx?mlfb=3LD2254-1TL53](http://www.automation.siemens.com/bilddb/cax_en.aspx?mlfb=3LD2254-1TL53)

**CAX-Online-Generator**

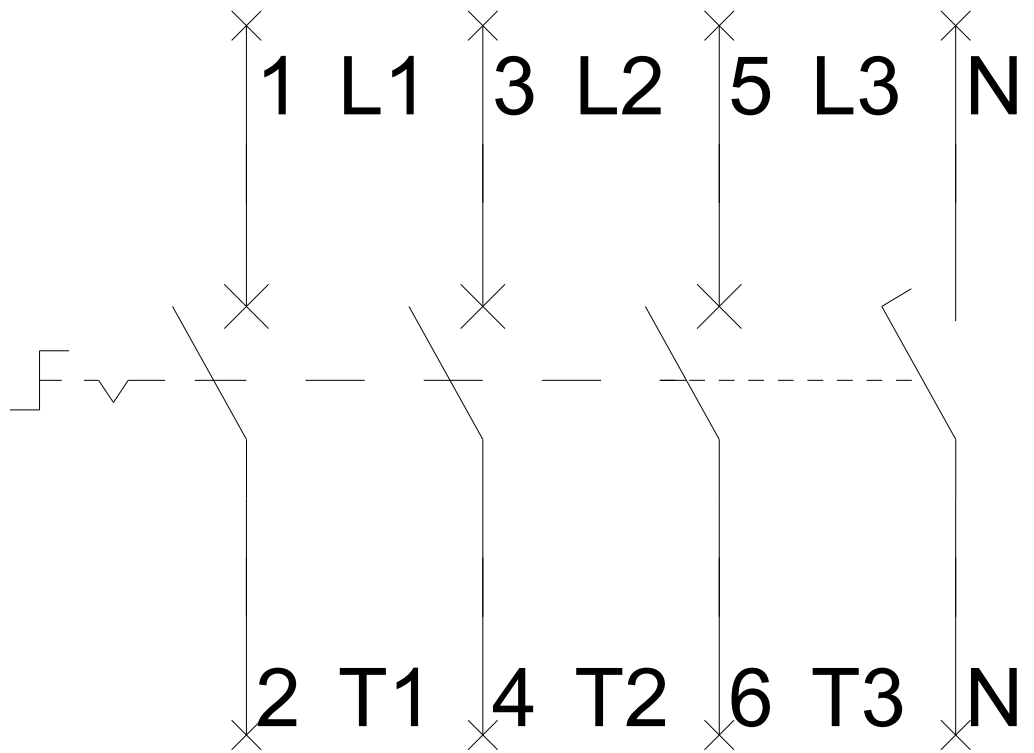
<http://www.siemens.com/cax>

**Tender specifications**

<http://www.siemens.com/specifications>



**-Q1**



-CI

