

ICS25-F22S-9005 - Connection plate



1072520
<https://www.phoenixcontact.com/in/products/1072520>

Please be informed that the data shown in this PDF document is generated from our online catalog. Please find the complete data in the user documentation. Our general terms of use for downloads are valid.

DIN rail housing, ICS filler, closed, width: 25 mm, height: 7.25 mm, depth: 22.4 mm, color: black (similar RAL 9005)



Your advantages

- Flexible use, thanks to the modular system and unique modularity in the connection technology
- Standardized connections such as RJ45, USB, D-SUB and antenna sockets as components that can be integrated
- Optimal space utilization, as well as adaptability of design, colors, and printing
- Customized processing for any customer-specific connection technology
- Easy and fast push-in mounting of assembled printed-circuit boards, thanks to stable guide rails

Commercial data

Item number	1072520
Packing unit	10 pc
Minimum order quantity	10 pc
Sales key	*****
Product key	ACHAEE
GTIN	4055626763491
Weight per piece (including packing)	2.1 g
Weight per piece (excluding packing)	1.48 g
Customs tariff number	85389099
Country of origin	PL

ICS25-F22S-9005 - Connection plate



1072520

<https://www.phoenixcontact.com/in/products/1072520>

Technical data

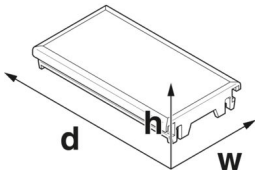
Notes

Assembly note	Please observe the application note in the download area.
---------------	---

Product properties

Product type	Connection plate
Housing type	DIN rail housing
Housing series	ICS
Product family	ICS25
Type	ICS filler, closed
Ventilation openings present	no

Dimensions

Dimensional drawing	
Width	25 mm
Height	7.25 mm
Depth	22.4 mm

PCB design

PCB thickness	1.4 mm ... 1.8 mm
---------------	-------------------

Material specifications

Color (Housing)	black (RAL 9005)
Flammability rating according to UL 94	V0
CTI according to IEC 60112	600
Housing material	PA
Surface characteristics	untreated

Environmental and real-life conditions

Vibration test

Specification	IEC 60068-2-6:2007-12
Frequency	10 - 150 - 10 Hz
Sweep speed	1 octave/min
Amplitude	0.15 mm (10 Hz ... 58.1 Hz)
Acceleration	2g (58.1 Hz ... 150 Hz)
Test duration per axis	2.5 h
Test directions	X-, Y- and Z-axis

ICS25-F22S-9005 - Connection plate



1072520

<https://www.phoenixcontact.com/in/products/1072520>

Glow-wire test

Specification	IEC 60695-2-11:2014-02
Temperature	850 °C
Time of exposure	30 s

Thermal stability / ball thrust test

Specification	IEC 60695-10-2:2014-02
Temperature	125 °C
Test duration	1 h
Force	20 N

Mechanical strength / tumbling barrel

Specification	IEC 60068-2-31:2008-05
Height of fall	50 cm
Frequency	50

Shocks

Specification	IEC 60068-2-27:2008-02
Pulse shape	Half-sine
Acceleration	15g
Shock duration	11 ms
Number of shocks per direction	3
Test directions	X-, Y- and Z-axis (pos. and neg.)

Test for substances that would hinder coating with paint or varnish

Specification	VDMA 24364:2018-05
Result	Test passed

Ambient conditions

Max. IP code to attain	IP20
Ambient temperature (operation)	-40 °C ... 105 °C (depending on power dissipation)
Ambient temperature (storage/transport)	-40 °C ... 55 °C
Ambient temperature (assembly)	-5 °C ... 100 °C
Relative humidity (storage/transport)	80 %

PCB data

Number of PCB holders	2
Type of PCB mount	Slot
Thickness of the PCB	1.4 mm ... 1.8 mm

Mounting

Mounting type	Slot
---------------	------

Packaging specifications

Outer packaging type	Resealable bag
----------------------	----------------

ICS25-F22S-9005 - Connection plate

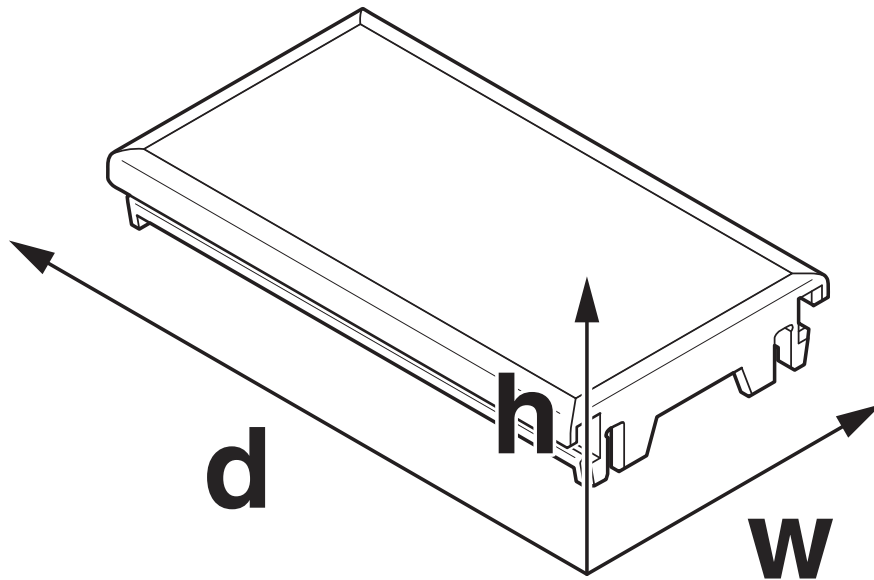


1072520

<https://www.phoenixcontact.com/in/products/1072520>

Drawings

Dimensional drawing



Schematic figure for illustrating the item dimensions. The figure is not of the desired product. For further details, refer to the product drawings in the "Downloads" tab.

ICS25-F22S-9005 - Connection plate



1072520

<https://www.phoenixcontact.com/in/products/1072520>

Approvals

🔗 To download certificates, visit the product detail page: <https://www.phoenixcontact.com/in/products/1072520>



UL Recognized

Approval ID: E240868

ICS25-F22S-9005 - Connection plate



1072520

<https://www.phoenixcontact.com/in/products/1072520>

Classifications

ECLASS

ECLASS-11.0	27182702
ECLASS-13.0	27190605

ETIM

ETIM 9.0	EC002779
----------	----------

UNSPSC

UNSPSC 21.0	31261500
-------------	----------

ICS25-F22S-9005 - Connection plate



1072520

<https://www.phoenixcontact.com/in/products/1072520>

Environmental product compliance

EU RoHS	
Fulfills EU RoHS substance requirements	Yes, No exemptions
China RoHS	
Environment friendly use period (EFUP)	EFUP-E
	No hazardous substances above the limits
EU REACH SVHC	
REACH candidate substance (CAS No.)	No substance above 0.1 wt%

ICS25-F22S-9005 - Connection plate



1072520

<https://www.phoenixcontact.com/in/products/1072520>

Mandatory accessories

ICS25-B100X98-V-9005 - Mounting base housing

1072534

<https://www.phoenixcontact.com/in/products/1072534>



DIN rail housing, Lower housing part with metal foot catch, Level 1: with vents, width: 25 mm, height: 100 mm, depth: 108.35 mm, color: black (similar RAL 9005), cross connection: DIN rail connector (optional), number of positions cross connector: 8

ICS25-B100X98-V-7035 - Mounting base housing

2203881

<https://www.phoenixcontact.com/in/products/2203881>



DIN rail housing, Lower housing part with metal foot catch, Level 1: with vents, width: 25 mm, height: 100 mm, depth: 108.35 mm, color: light gray (similar RAL 7035), cross connection: DIN rail connector (optional), number of positions cross connector: 8

ICS25-F22S-9005 - Connection plate

1072520

<https://www.phoenixcontact.com/in/products/1072520>



ICS25-B100X98-V-5015 - Mounting base housing

1072379

<https://www.phoenixcontact.com/in/products/1072379>



DIN rail housing, Lower housing part with metal foot catch, Level 1: with vents, width: 25 mm, height: 100 mm, depth: 108.35 mm, color: blue (similar RAL 5015), cross connection: DIN rail connector (optional), number of positions cross connector: 8

ICS25-B100X98-V-1018 - Mounting base housing

1091366

<https://www.phoenixcontact.com/in/products/1091366>



DIN rail housing, Lower housing part with metal foot catch, Level 1: with vents, width: 25 mm, height: 100 mm, depth: 108.35 mm, color: yellow (similar RAL 1018), cross connection: DIN rail connector (optional), number of positions cross connector: 8

ICS25-F22S-9005 - Connection plate

1072520

<https://www.phoenixcontact.com/in/products/1072520>



ICS25-B100X98-O-9005 - Mounting base housing

1105223

<https://www.phoenixcontact.com/in/products/1105223>



DIN rail housing, Lower housing part with metal foot catch, width: 25 mm, height: 100 mm, depth: 108.35 mm, color: black (similar RAL 9005), cross connection: DIN rail connector (optional), number of positions cross connector: 8

ICS25-B100X98-O-7035 - Mounting base housing

1105221

<https://www.phoenixcontact.com/in/products/1105221>



DIN rail housing, Lower housing part with metal foot catch, width: 25 mm, height: 100 mm, depth: 108.35 mm, color: light gray (similar RAL 7035), cross connection: DIN rail connector (optional), number of positions cross connector: 8

ICS25-F22S-9005 - Connection plate

1072520

<https://www.phoenixcontact.com/in/products/1072520>



ICS25-B100X120-V-9005 - Mounting base housing

1072527

<https://www.phoenixcontact.com/in/products/1072527>



DIN rail housing, Lower housing part with metal foot catch, Level 1: with vents, width: 25 mm, height: 100 mm, depth: 130.9 mm, color: black (similar RAL 9005), cross connection: DIN rail connector (optional), number of positions cross connector: 8

ICS25-B100X120-V-7035 - Mounting base housing

2203884

<https://www.phoenixcontact.com/in/products/2203884>



DIN rail housing, Lower housing part with metal foot catch, Level 1: with vents, width: 25 mm, height: 100 mm, depth: 130.9 mm, color: light gray (similar RAL 7035), cross connection: DIN rail connector (optional), number of positions cross connector: 8

ICS25-F22S-9005 - Connection plate

1072520

<https://www.phoenixcontact.com/in/products/1072520>



ICS25-B100X120-O-9005 - Mounting base housing

1355951

<https://www.phoenixcontact.com/in/products/1355951>



DIN rail housing, Lower housing part with metal foot catch, width: 25 mm, height: 100 mm, depth: 130.9 mm, color: black (similar RAL 9005), cross connection: DIN rail connector (optional), number of positions cross connector: 8

ICS25-B100X120-O-7035 - Mounting base housing

1355945

<https://www.phoenixcontact.com/in/products/1355945>



DIN rail housing, Lower housing part with metal foot catch, width: 25 mm, height: 100 mm, depth: 130.9 mm, color: light gray (similar RAL 7035), cross connection: DIN rail connector (optional), number of positions cross connector: 8

ICS25-F22S-9005 - Connection plate

1072520

<https://www.phoenixcontact.com/in/products/1072520>



ICS25-B100X120-O-5015 - Mounting base housing

1355948

<https://www.phoenixcontact.com/in/products/1355948>



DIN rail housing, Lower housing part with metal foot catch, width: 25 mm, height: 100 mm, depth: 130.9 mm, color: blue (similar RAL 5015), cross connection: DIN rail connector (optional), number of positions cross connector: 8

ICS25-B100X120-O-1018 - Mounting base housing

1355954

<https://www.phoenixcontact.com/in/products/1355954>



DIN rail housing, Lower housing part with metal foot catch, width: 25 mm, height: 100 mm, depth: 130.9 mm, color: yellow (similar RAL 1018), cross connection: DIN rail connector (optional), number of positions cross connector: 8

ICS25-F22S-9005 - Connection plate

1072520

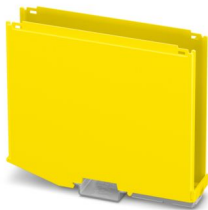
<https://www.phoenixcontact.com/in/products/1072520>



ICS25-B122X98-O-1018 - Mounting base housing

1355955

<https://www.phoenixcontact.com/in/products/1355955>



DIN rail housing, Lower housing part with metal foot catch, width: 25 mm, height: 122.5 mm, depth: 108.35 mm, color: yellow (similar RAL 1018), cross connection: DIN rail connector (optional), number of positions cross connector: 8

ICS25-B122X98-O-5015 - Mounting base housing

1355949

<https://www.phoenixcontact.com/in/products/1355949>



DIN rail housing, Lower housing part with metal foot catch, width: 25 mm, height: 122.5 mm, depth: 108.35 mm, color: blue (similar RAL 5015), cross connection: DIN rail connector (optional), number of positions cross connector: 8

ICS25-F22S-9005 - Connection plate

1072520

<https://www.phoenixcontact.com/in/products/1072520>



ICS25-B122X98-O-7035 - Mounting base housing

1355946

<https://www.phoenixcontact.com/in/products/1355946>



DIN rail housing, Lower housing part with metal foot catch, width: 25 mm, height: 122.5 mm, depth: 108.35 mm, color: light gray (similar RAL 7035), cross connection: DIN rail connector (optional), number of positions cross connector: 8

ICS25-B122X98-O-9005 - Mounting base housing

1355952

<https://www.phoenixcontact.com/in/products/1355952>



DIN rail housing, Lower housing part with metal foot catch, width: 25 mm, height: 122.5 mm, depth: 108.35 mm, color: light gray (similar RAL 7035), cross connection: DIN rail connector (optional), number of positions cross connector: 8

ICS25-F22S-9005 - Connection plate

1072520

<https://www.phoenixcontact.com/in/products/1072520>



ICS25-B122X98-V-5015 - Mounting base housing

1072372

<https://www.phoenixcontact.com/in/products/1072372>



DIN rail housing, Lower housing part with metal foot catch, Level 1: with vents, width: 25 mm, height: 122.5 mm, depth: 108.35 mm, color: blue (similar RAL 5015), cross connection: DIN rail connector (optional), number of positions cross connector: 8

ICS25-B122X98-V-7035 - Mounting base housing

2203885

<https://www.phoenixcontact.com/in/products/2203885>



DIN rail housing, Lower housing part with metal foot catch, Level 1: with vents, width: 25 mm, height: 122.5 mm, depth: 108.35 mm, color: light gray (similar RAL 7035), cross connection: DIN rail connector (optional), number of positions cross connector: 8

ICS25-F22S-9005 - Connection plate

1072520

<https://www.phoenixcontact.com/in/products/1072520>



ICS25-B122X98-V-9005 - Mounting base housing

1072526

<https://www.phoenixcontact.com/in/products/1072526>



DIN rail housing, Lower housing part with metal foot catch, Level 1: with vents, width: 25 mm, height: 122.5 mm, depth: 108.35 mm, color: black (similar RAL 9005), cross connection: DIN rail connector (optional), number of positions cross connector: 8

ICS50-B100X98-O-O-5015 - Mounting base housing

1118656

<https://www.phoenixcontact.com/in/products/1118656>



DIN rail housing, Lower housing part with metal foot catch, width: 50.1 mm, height: 100 mm, depth: 108.35 mm, color: blue (similar RAL 5015), cross connection: DIN rail connector (optional), number of positions cross connector: 8

ICS25-F22S-9005 - Connection plate

1072520

<https://www.phoenixcontact.com/in/products/1072520>



ICS50-B100X98-O-O-7035 - Mounting base housing

1118644

<https://www.phoenixcontact.com/in/products/1118644>



DIN rail housing, Lower housing part with metal foot catch, width: 50.1 mm, height: 100 mm, depth: 108.35 mm, color: light gray (similar RAL 7035), cross connection: DIN rail connector (optional), number of positions cross connector: 8

ICS50-B100X98-O-O-9005 - Mounting base housing

1118654

<https://www.phoenixcontact.com/in/products/1118654>



DIN rail housing, Lower housing part with metal foot catch, width: 50.1 mm, height: 100 mm, depth: 108.35 mm, color: black (similar RAL 9005), cross connection: DIN rail connector (optional), number of positions cross connector: 8

ICS25-F22S-9005 - Connection plate

1072520

<https://www.phoenixcontact.com/in/products/1072520>



ICS50-B100X98-V-V-1018 - Mounting base housing

1305039

<https://www.phoenixcontact.com/in/products/1305039>



DIN rail housing, Lower housing part with metal foot catch, Level 1: with vents, width: 50.1 mm, height: 100 mm, depth: 108.35 mm, color: yellow (similar RAL 1018), cross connection: DIN rail connector (optional), number of positions cross connector: 8

ICS50-B100X98-V-V-5015 - Mounting base housing

1076921

<https://www.phoenixcontact.com/in/products/1076921>



DIN rail housing, Lower housing part with metal foot catch, Level 1: with vents, width: 50.1 mm, height: 100 mm, depth: 108.35 mm, color: blue (similar RAL 5015), cross connection: DIN rail connector (optional), number of positions cross connector: 8

ICS25-F22S-9005 - Connection plate

1072520

<https://www.phoenixcontact.com/in/products/1072520>



ICS50-B100X98-V-V-7035 - Mounting base housing

1076998

<https://www.phoenixcontact.com/in/products/1076998>



DIN rail housing, Lower housing part with metal foot catch, Level 1: with vents, width: 50.1 mm, height: 100 mm, depth: 108.35 mm, color: light gray (similar RAL 7035), cross connection: DIN rail connector (optional), number of positions cross connector: 8

ICS50-B100X98-V-V-9005 - Mounting base housing

1076893

<https://www.phoenixcontact.com/in/products/1076893>



DIN rail housing, Lower housing part with metal foot catch, Level 1: with vents, width: 50.1 mm, height: 100 mm, depth: 108.35 mm, color: black (similar RAL 9005), cross connection: DIN rail connector (optional), number of positions cross connector: 8

ICS25-F22S-9005 - Connection plate

1072520

<https://www.phoenixcontact.com/in/products/1072520>



ICS50-B122X98-O-O-5015 - Mounting base housing

1118652

<https://www.phoenixcontact.com/in/products/1118652>



DIN rail housing, Lower housing part with metal foot catch, width: 50.1 mm, height: 122.5 mm, depth: 108.35 mm, color: blue (similar RAL 5015), cross connection: DIN rail connector (optional), number of positions cross connector: 8

ICS50-B122X98-O-O-7035 - Mounting base housing

1118647

<https://www.phoenixcontact.com/in/products/1118647>



DIN rail housing, Lower housing part with metal foot catch, width: 50.1 mm, height: 122.5 mm, depth: 108.35 mm, color: light gray (similar RAL 7035), cross connection: DIN rail connector (optional), number of positions cross connector: 8

ICS25-F22S-9005 - Connection plate

1072520

<https://www.phoenixcontact.com/in/products/1072520>



ICS50-B122X98-O-O-9005 - Mounting base housing

1118643

<https://www.phoenixcontact.com/in/products/1118643>



DIN rail housing, Lower housing part with metal foot catch, width: 50.1 mm, height: 122.5 mm, depth: 108.35 mm, color: black (similar RAL 9005), cross connection: DIN rail connector (optional), number of positions cross connector: 8

ICS50-B122X98-V-V-5015 - Mounting base housing

1076907

<https://www.phoenixcontact.com/in/products/1076907>



DIN rail housing, Lower housing part with metal foot catch, Level 1: with vents, width: 50.1 mm, height: 122.5 mm, depth: 108.35 mm, color: blue (similar RAL 5015), cross connection: DIN rail connector (optional), number of positions cross connector: 8

ICS25-F22S-9005 - Connection plate

1072520

<https://www.phoenixcontact.com/in/products/1072520>



ICS50-B122X98-V-V-7035 - Mounting base housing

1077064

<https://www.phoenixcontact.com/in/products/1077064>



DIN rail housing, Lower housing part with metal foot catch, Level 1: with vents, width: 50.1 mm, height: 122.5 mm, depth: 108.35 mm, color: light gray (similar RAL 7035), cross connection: DIN rail connector (optional), number of positions cross connector: 8

ICS50-B122X98-V-V-9005 - Mounting base housing

1076880

<https://www.phoenixcontact.com/in/products/1076880>



DIN rail housing, Lower housing part with metal foot catch, Level 1: with vents, width: 50.1 mm, height: 122.5 mm, depth: 108.35 mm, color: black (similar RAL 9005), cross connection: DIN rail connector (optional), number of positions cross connector: 8

ICS25-F22S-9005 - Connection plate

1072520

<https://www.phoenixcontact.com/in/products/1072520>



ICS25-B77X75-O-5015 - Mounting base housing

1072454

<https://www.phoenixcontact.com/in/products/1072454>



DIN rail housing, Lower housing part with metal foot catch, width: 25 mm, height: 77.5 mm, depth: 85.8 mm, color: blue (similar RAL 5015), cross connection: DIN rail connector (optional), number of positions cross connector: 8

ICS25-B77X75-O-9005 - Mounting base housing

1072560

<https://www.phoenixcontact.com/in/products/1072560>



DIN rail housing, Lower housing part with metal foot catch, width: 25 mm, height: 77.5 mm, depth: 85.8 mm, color: black (similar RAL 9005), cross connection: DIN rail connector (optional), number of positions cross connector: 8

ICS25-F22S-9005 - Connection plate

1072520

<https://www.phoenixcontact.com/in/products/1072520>



ICS25-B77X75-O-7035 - Mounting base housing

2203876

<https://www.phoenixcontact.com/in/products/2203876>



DIN rail housing, Lower housing part with metal foot catch, width: 25 mm, height: 77.5 mm, depth: 85.8 mm, color: light gray (similar RAL 7035), cross connection: DIN rail connector (optional), number of positions cross connector: 8

Accessories

ICS25-C100X12-7035 - Upper housing part

2203882

<https://www.phoenixcontact.com/in/products/2203882>



DIN rail housing, Upper part, closed, width: 25 mm, height: 100 mm, depth: 14.35 mm, color: light gray (similar RAL 7035)

ICS25-F22S-9005 - Connection plate

1072520

<https://www.phoenixcontact.com/in/products/1072520>



ICS25-C100X12-9005 - Upper housing part

1072531

<https://www.phoenixcontact.com/in/products/1072531>

DIN rail housing, Upper part, closed, width: 25 mm, height: 100 mm, depth: 14.35 mm, color: black (similar RAL 9005)

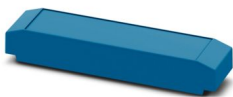


ICS25-C100X12-5015 - Upper housing part

1072378

<https://www.phoenixcontact.com/in/products/1072378>

DIN rail housing, Upper part, closed, width: 25 mm, height: 100 mm, depth: 14.35 mm, color: blue (similar RAL 5015)



ICS25-F22S-9005 - Connection plate

1072520

<https://www.phoenixcontact.com/in/products/1072520>



ICS25-C100X12-1018 - Upper housing part

1099162

<https://www.phoenixcontact.com/in/products/1099162>

DIN rail housing, Upper part, closed, width: 25 mm, height: 100 mm, depth: 14.35 mm, color: yellow (similar RAL 1018)



ICS25-C100X12-DKP-7035 - Upper housing part with display

1215686

<https://www.phoenixcontact.com/in/products/1215686>

DIN rail housing, Upper part, integrated 0.96" display, resolution: 80 x 160 Pixel(s), interface: 4-wire SPI half duplex, width: 25 mm, height: 100 mm, depth: 14.35 mm



ICS25-F22S-9005 - Connection plate

1072520

<https://www.phoenixcontact.com/in/products/1072520>



ICS25-C100X12-DKP-9005 - Upper housing part with display

1524410

<https://www.phoenixcontact.com/in/products/1524410>

DIN rail housing, Upper part, integrated 0.96" display, width: 25 mm, height: 100 mm, depth: 14.35 mm, color: black (similar RAL 9005)



ICS25-TL100X12-7035 - Upper housing part

2203883

<https://www.phoenixcontact.com/in/products/2203883>

DIN rail housing, Upper part, with transparent hinged cover, width: 25 mm, height: 101 mm, depth: 14.35 mm, color: light gray (similar RAL 7035)



ICS25-F22S-9005 - Connection plate

1072520

<https://www.phoenixcontact.com/in/products/1072520>



ICS25-TL100X12-9005 - Upper housing part

1072528

<https://www.phoenixcontact.com/in/products/1072528>

DIN rail housing, Upper part, with transparent hinged cover, width: 25 mm, height: 101 mm, depth: 14.35 mm, color: black (similar RAL 9005)

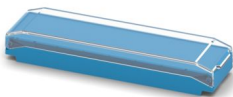


ICS25-TL100X12-5015 - Upper housing part

1072377

<https://www.phoenixcontact.com/in/products/1072377>

DIN rail housing, Upper part, with transparent hinged cover, width: 25 mm, height: 101 mm, depth: 14.35 mm, color: blue (similar RAL 5015)



ICS25-F22S-9005 - Connection plate

1072520

<https://www.phoenixcontact.com/in/products/1072520>



ICS25-C122X12-5015 - Upper housing part

1072375

<https://www.phoenixcontact.com/in/products/1072375>

DIN rail housing, Upper part, closed, width: 25 mm, height: 122.5 mm, depth: 14.35 mm, color: blue (similar RAL 5015)



ICS25-C122X12-9005 - Upper housing part

1072525

<https://www.phoenixcontact.com/in/products/1072525>

DIN rail housing, Upper part, closed, width: 25 mm, height: 122.5 mm, depth: 14.35 mm, color: black (similar RAL 9005)



ICS25-F22S-9005 - Connection plate

1072520

<https://www.phoenixcontact.com/in/products/1072520>



ICS25-C122X12-DKP-7035 - Upper housing part with display

1215685

<https://www.phoenixcontact.com/in/products/1215685>

DIN rail housing, Upper part, integrated 0.96" display, resolution: 80 x 160 Pixel(s), interface: 4-wire SPI half duplex, width: 25 mm, height: 122 mm



ICS25-C122X12-7035 - Upper housing part

2203886

<https://www.phoenixcontact.com/in/products/2203886>

DIN rail housing, Upper part, closed, width: 25 mm, height: 122.5 mm, depth: 14.35 mm, color: light gray (similar RAL 7035)



ICS25-F22S-9005 - Connection plate

1072520

<https://www.phoenixcontact.com/in/products/1072520>



ICS25-TL122X12-7035 - Upper housing part

2203887

<https://www.phoenixcontact.com/in/products/2203887>

DIN rail housing, Upper part, with transparent hinged cover, width: 25 mm, height: 123.5 mm, depth: 14.35 mm, color: light gray (similar RAL 7035)

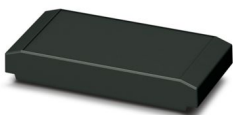


ICS50-C100X12-9005 - Upper housing part

1076892

<https://www.phoenixcontact.com/in/products/1076892>

DIN rail housing, Upper part, closed, width: 50.1 mm, height: 100 mm, depth: 14.35 mm, color: black (similar RAL 9005)



ICS25-F22S-9005 - Connection plate

1072520

<https://www.phoenixcontact.com/in/products/1072520>

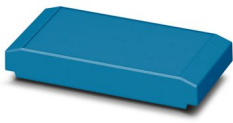


ICS50-C100X12-5015 - Upper housing part

1076919

<https://www.phoenixcontact.com/in/products/1076919>

DIN rail housing, Upper part, closed, width: 50.1 mm, height: 100 mm, depth: 14.35 mm, color: blue (similar RAL 5015)



ICS50-C100X12-7035 - Upper housing part

1076995

<https://www.phoenixcontact.com/in/products/1076995>

DIN rail housing, Upper part, closed, width: 50.1 mm, height: 100 mm, depth: 14.35 mm, color: light gray (similar RAL 7035)



ICS25-F22S-9005 - Connection plate

1072520

<https://www.phoenixcontact.com/in/products/1072520>



ICS50-C100X12-D2,4-TRG-7035 - Upper housing part with touch display

1077656

<https://www.phoenixcontact.com/in/products/1077656>

DIN rail housing, Upper part, integrated 2.4" resistive touch display, resolution: 320 x 240 Pixel(s), interface: 4-wire SPI half duplex, width: 50.1 mm, height: 100 mm, depth: 14.35 mm



ICS50-C100X12-D2,4-TRG-7035-VPE1 - Upper housing part with touch display

1226370

<https://www.phoenixcontact.com/in/products/1226370>

DIN rail housing, Upper part, integrated 2.4" resistive touch display, resolution: 320 x 240 Pixel(s), interface: 4-wire SPI half duplex, width: 50.1 mm, height: 100 mm, depth: 14.35 mm



ICS25-F22S-9005 - Connection plate

1072520

<https://www.phoenixcontact.com/in/products/1072520>



ICS50-C100X12-D2,4-TRG-1018 - Upper housing part with touch display

1304990

<https://www.phoenixcontact.com/in/products/1304990>

DIN rail housing, Upper part, integrated 2.4" resistive touch display, interface: 4-wire SPI half duplex, width: 50 mm, height: 100 mm, depth: 12 mm



ICS50-TL100X12-9005 - Upper housing part

1076882

<https://www.phoenixcontact.com/in/products/1076882>

DIN rail housing, Upper part, with transparent hinged cover, width: 50.1 mm, height: 101 mm, depth: 14.35 mm, color: black (similar RAL 9005)



ICS25-F22S-9005 - Connection plate



1072520

<https://www.phoenixcontact.com/in/products/1072520>

ICS50-TL100X12-5015 - Upper housing part

1076913

<https://www.phoenixcontact.com/in/products/1076913>

DIN rail housing, Upper part, with transparent hinged cover, width: 50.1 mm, height: 101 mm, depth: 14.35 mm, color: blue (similar RAL 5015)



ICS50-TL100X12-7035 - Upper housing part

1076994

<https://www.phoenixcontact.com/in/products/1076994>

DIN rail housing, Upper part, with transparent hinged cover, width: 50.1 mm, height: 101 mm, depth: 14.35 mm, color: light gray (similar RAL 7035)



ICS25-F22S-9005 - Connection plate



1072520

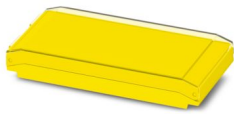
<https://www.phoenixcontact.com/in/products/1072520>

ICS50-TL100X12-1018 - Upper housing part

1308377

<https://www.phoenixcontact.com/in/products/1308377>

DIN rail housing, Upper part, with transparent hinged cover, width: 50 mm, height: 100 mm, depth: 14.35 mm, color: yellow (similar RAL 1018)



ICS50-TL122X12-9005 - Upper housing part

1076870

<https://www.phoenixcontact.com/in/products/1076870>

DIN rail housing, Upper part, with transparent hinged cover, width: 50.1 mm, height: 123.5 mm, depth: 14.35 mm, color: black (similar RAL 9005)



ICS25-F22S-9005 - Connection plate

1072520

<https://www.phoenixcontact.com/in/products/1072520>



ICS50-C122X12-9005 - Upper housing part

1076876

<https://www.phoenixcontact.com/in/products/1076876>

DIN rail housing, Upper part, closed, width: 50.1 mm, height: 122.5 mm, depth: 14.35 mm, color: black (similar RAL 9005)



ICS50-TL122X12-5015 - Upper housing part

1076903

<https://www.phoenixcontact.com/in/products/1076903>

DIN rail housing, Upper part, with transparent hinged cover, width: 50.1 mm, height: 123.5 mm, depth: 14.35 mm, color: blue (similar RAL 5015)



ICS25-F22S-9005 - Connection plate

1072520

<https://www.phoenixcontact.com/in/products/1072520>



ICS50-C122X12-5015 - Upper housing part

1076904

<https://www.phoenixcontact.com/in/products/1076904>

DIN rail housing, Upper part, closed, width: 50.1 mm, height: 122.5 mm, depth: 14.35 mm, color: blue (similar RAL 5015)



ICS50-TL122X12-7035 - Upper housing part

1076991

<https://www.phoenixcontact.com/in/products/1076991>

DIN rail housing, Upper part, with transparent hinged cover, width: 50.1 mm, height: 123.5 mm, depth: 14.35 mm, color: light gray (similar RAL 7035)



ICS25-F22S-9005 - Connection plate

1072520

<https://www.phoenixcontact.com/in/products/1072520>



ICS50-C122X12-7035 - Upper housing part

1076992

<https://www.phoenixcontact.com/in/products/1076992>

DIN rail housing, Upper part, closed, width: 50.1 mm, height: 122.5 mm, depth: 14.35 mm, color: light gray (similar RAL 7035)



ICS50-C122X12-D2,4-TRG-7035 - Upper housing part with touch display

1357462

<https://www.phoenixcontact.com/in/products/1357462>

DIN rail housing, Upper part, integrated 2.4" resistive touch display, interface: 4-wire SPI half duplex, width: 50.1 mm, height: 122.5 mm, depth: 14.35 mm



ICS25-F22S-9005 - Connection plate

1072520

<https://www.phoenixcontact.com/in/products/1072520>



ICS50-C122X12-D2,4-TRG-7035 VPE1 - Upper housing part with touch display

1525286

<https://www.phoenixcontact.com/in/products/1525286>

DIN rail housing, Upper part, integrated 2.4" resistive touch display, interface: 4-wire SPI half duplex, width: 50.1 mm, height: 122.5 mm, depth: 14.35 mm



ICS25-TL77X12-7035 - Upper housing part

1019570

<https://www.phoenixcontact.com/in/products/1019570>

DIN rail housing, Upper part, with transparent hinged cover, width: 25 mm, height: 78.5 mm, depth: 14.35 mm, color: light gray (similar RAL 7035)



ICS25-F22S-9005 - Connection plate



1072520

<https://www.phoenixcontact.com/in/products/1072520>

ICS25-C77X12-7035 - Upper housing part

1019703

<https://www.phoenixcontact.com/in/products/1019703>

DIN rail housing, Upper part, closed, width: 25 mm, height: 77.5 mm, depth: 14.35 mm, color: light gray (similar RAL 7035)

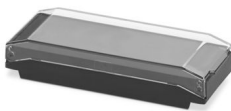


ICS25-TL77X12-9005 - Upper housing part

1072555

<https://www.phoenixcontact.com/in/products/1072555>

DIN rail housing, Upper part, with transparent hinged cover, width: 25 mm, height: 78.5 mm, depth: 14.35 mm, color: black (similar RAL 9005)



ICS25-F22S-9005 - Connection plate

1072520

<https://www.phoenixcontact.com/in/products/1072520>



ICS25-C77X12-9005 - Upper housing part

1072559

<https://www.phoenixcontact.com/in/products/1072559>

DIN rail housing, Upper part, closed, width: 25 mm, height: 77.5 mm, depth: 14.35 mm, color: black (similar RAL 9005)



ICS25-TL77X12-5015 - Upper housing part

2203877

<https://www.phoenixcontact.com/in/products/2203877>

DIN rail housing, Upper part, with transparent hinged cover, width: 25 mm, height: 78.5 mm, depth: 14.35 mm, color: blue (similar RAL 5015)



ICS25-F22S-9005 - Connection plate

1072520

<https://www.phoenixcontact.com/in/products/1072520>



ICS25-F22V-7035 - Connection plate

1079495

<https://www.phoenixcontact.com/in/products/1079495>

DIN rail housing, ICS filler, with vents, width: 25 mm, height: 7.25 mm, depth: 22.4 mm, color: light gray (similar RAL 7035)



ICS25-F22V-9005 - Connection plate

1104313

<https://www.phoenixcontact.com/in/products/1104313>

DIN rail housing, ICS filler, with vents, width: 25 mm, height: 7.25 mm, depth: 22.4 mm, color: black (similar RAL 9005)



ICS25-F22S-9005 - Connection plate

1072520

<https://www.phoenixcontact.com/in/products/1072520>



ICS25-F22V-5015 - Connection plate

1104318

<https://www.phoenixcontact.com/in/products/1104318>

DIN rail housing, ICS filler, with vents, width: 25 mm, height: 7.25 mm, depth: 22.4 mm, color: blue (similar RAL 5015)



ICS25-F22V-1018 - Connection plate

1287382

<https://www.phoenixcontact.com/in/products/1287382>

DIN rail housing, ICS filler, with vents, width: 25 mm, height: 7.25 mm, depth: 22.4 mm, color: yellow (similar RAL 1018)



ICS25-F22S-9005 - Connection plate

1072520

<https://www.phoenixcontact.com/in/products/1072520>



ICS25-F45V-7035 - Connection plate

1079492

<https://www.phoenixcontact.com/in/products/1079492>

DIN rail housing, ICS filler, with vents, width: 25 mm, height: 7.25 mm, depth: 44.9 mm, color: light gray (similar RAL 7035)



ICS25-F45V-9005 - Connection plate

1104312

<https://www.phoenixcontact.com/in/products/1104312>

DIN rail housing, ICS filler, with vents, width: 25 mm, height: 7.25 mm, depth: 44.9 mm, color: black (similar RAL 9005)



ICS25-F22S-9005 - Connection plate

1072520

<https://www.phoenixcontact.com/in/products/1072520>



ICS25-F45V-5015 - Connection plate

1104317

<https://www.phoenixcontact.com/in/products/1104317>

DIN rail housing, ICS filler, with vents, width: 25 mm, height: 7.25 mm, depth: 44.9 mm, color: blue (similar RAL 5015)



ICS25-F45V-1018 - Connection plate

1287380

<https://www.phoenixcontact.com/in/products/1287380>

DIN rail housing, ICS filler, with vents, width: 25 mm, height: 7.25 mm, depth: 44.9 mm, color: yellow (similar RAL 1018)



ICS25-F22S-9005 - Connection plate

1072520

<https://www.phoenixcontact.com/in/products/1072520>



ICS25-F67V-1018 - Connection plate

1287406

<https://www.phoenixcontact.com/in/products/1287406>

DIN rail housing, ICS filler, with vents, width: 25 mm, height: 7.25 mm, depth: 67.3 mm, color: yellow (similar RAL 1018)



ICS25-F67V-9005 - Connection plate

1287407

<https://www.phoenixcontact.com/in/products/1287407>

DIN rail housing, ICS filler, with vents, width: 25 mm, height: 7.25 mm, depth: 67.3 mm, color: black (similar RAL 9005)



ICS25-F22S-9005 - Connection plate

1072520

<https://www.phoenixcontact.com/in/products/1072520>



ICS25-F67V-5015 - Connection plate

1287408

<https://www.phoenixcontact.com/in/products/1287408>

DIN rail housing, ICS filler, with vents, width: 25 mm, height: 7.25 mm, depth: 67.3 mm, color: blue (similar RAL 5015)



ICS25-F67V-7035 - Connection plate

1287409

<https://www.phoenixcontact.com/in/products/1287409>

DIN rail housing, ICS filler, with vents, width: 25 mm, height: 7.25 mm, depth: 67.3 mm, color: light gray (similar RAL 7035)



ICS25-F22S-9005 - Connection plate

1072520

<https://www.phoenixcontact.com/in/products/1072520>



ICS25-F90V-1018 - Connection plate

1287402

<https://www.phoenixcontact.com/in/products/1287402>

DIN rail housing, ICS filler, with vents, width: 25 mm, height: 7.25 mm, depth: 89.8 mm, color: yellow (similar RAL 1018)



ICS25-F90V-9005 - Connection plate

1287403

<https://www.phoenixcontact.com/in/products/1287403>

DIN rail housing, ICS filler, with vents, width: 25 mm, height: 7.25 mm, depth: 89.8 mm, color: black (similar RAL 9005)



ICS25-F22S-9005 - Connection plate

1072520

<https://www.phoenixcontact.com/in/products/1072520>



ICS25-F90V-5015 - Connection plate

1287404

<https://www.phoenixcontact.com/in/products/1287404>

DIN rail housing, ICS filler, with vents, width: 25 mm, height: 7.25 mm, depth: 89.8 mm, color: blue (similar RAL 5015)



ICS25-F90V-7035 - Connection plate

1287405

<https://www.phoenixcontact.com/in/products/1287405>

DIN rail housing, ICS filler, with vents, width: 25 mm, height: 7.25 mm, depth: 89.8 mm, color: light gray (similar RAL 7035)



ICS25-F22S-9005 - Connection plate

1072520

<https://www.phoenixcontact.com/in/products/1072520>



ICS25-F112V-1018 - Connection plate

1287396

<https://www.phoenixcontact.com/in/products/1287396>

DIN rail housing, ICS filler, with vents, width: 25 mm, height: 7.25 mm, depth: 112.3 mm, color: yellow (similar RAL 1018)



ICS25-F112V-9005 - Connection plate

1287399

<https://www.phoenixcontact.com/in/products/1287399>

DIN rail housing, ICS filler, with vents, width: 25 mm, height: 7.25 mm, depth: 112.3 mm, color: black (similar RAL 9005)



ICS25-F22S-9005 - Connection plate

1072520

<https://www.phoenixcontact.com/in/products/1072520>



ICS25-F112V-5015 - Connection plate

1287400

<https://www.phoenixcontact.com/in/products/1287400>

DIN rail housing, ICS filler, with vents, width: 25 mm, height: 7.25 mm, depth: 112.3 mm, color: blue (similar RAL 5015)



ICS25-F112V-7035 - Connection plate

1287401

<https://www.phoenixcontact.com/in/products/1287401>

DIN rail housing, ICS filler, with vents, width: 25 mm, height: 7.25 mm, depth: 112.3 mm, color: light gray (similar RAL 7035)



ICS25-F22S-9005 - Connection plate

1072520

<https://www.phoenixcontact.com/in/products/1072520>



ICS25-F22S-7035 - Connection plate

2203890

<https://www.phoenixcontact.com/in/products/2203890>

DIN rail housing, ICS filler, closed, width: 25 mm, height: 7.25 mm, depth: 22.4 mm, color: light gray (similar RAL 7035)



ICS25-F22S-9005 - Connection plate

1072520

<https://www.phoenixcontact.com/in/products/1072520>

DIN rail housing, ICS filler, closed, width: 25 mm, height: 7.25 mm, depth: 22.4 mm, color: black (similar RAL 9005)



ICS25-F22S-9005 - Connection plate

1072520

<https://www.phoenixcontact.com/in/products/1072520>



ICS25-F22S-5015 - Connection plate

1071794

<https://www.phoenixcontact.com/in/products/1071794>

DIN rail housing, ICS filler, closed, width: 25 mm, height: 7.25 mm, depth: 22.4 mm, color: blue (similar RAL 5015)



ICS25-F22S-1018 - Connection plate

1099531

<https://www.phoenixcontact.com/in/products/1099531>

DIN rail housing, ICS filler, closed, width: 25 mm, height: 7.25 mm, depth: 22.4 mm, color: yellow (similar RAL 1018)



ICS25-F22S-9005 - Connection plate

1072520

<https://www.phoenixcontact.com/in/products/1072520>



ICS25-F45S-7035 - Connection plate

2203891

<https://www.phoenixcontact.com/in/products/2203891>

DIN rail housing, ICS filler, closed, width: 25 mm, height: 7.25 mm, depth: 44.9 mm, color: light gray (similar RAL 7035)



ICS25-F45S-9005 - Connection plate

1072519

<https://www.phoenixcontact.com/in/products/1072519>

DIN rail housing, ICS filler, closed, width: 25 mm, height: 7.25 mm, depth: 44.9 mm, color: black (similar RAL 9005)



ICS25-F22S-9005 - Connection plate

1072520

<https://www.phoenixcontact.com/in/products/1072520>



ICS25-F45S-5015 - Connection plate

1071767

<https://www.phoenixcontact.com/in/products/1071767>

DIN rail housing, ICS filler, closed, width: 25 mm, height: 7.25 mm, depth: 44.9 mm, color: blue (similar RAL 5015)



ICS25-F45S-1018 - Connection plate

1099555

<https://www.phoenixcontact.com/in/products/1099555>

DIN rail housing, ICS filler, closed, width: 25 mm, height: 7.25 mm, depth: 44.9 mm, color: yellow (similar RAL 1018)



ICS25-F22S-9005 - Connection plate

1072520

<https://www.phoenixcontact.com/in/products/1072520>



ICS25-F67S-7035 - Connection plate

1287434

<https://www.phoenixcontact.com/in/products/1287434>

DIN rail housing, ICS filler, closed, width: 25 mm, height: 7.25 mm, depth: 67.3 mm, color: light gray (similar RAL 7035)



ICS25-F67S-9005 - Connection plate

1287431

<https://www.phoenixcontact.com/in/products/1287431>

DIN rail housing, ICS filler, closed, width: 25 mm, height: 7.25 mm, depth: 67.3 mm, color: black (similar RAL 9005)



ICS25-F22S-9005 - Connection plate

1072520

<https://www.phoenixcontact.com/in/products/1072520>



ICS25-F67S-5015 - Connection plate

1287433

<https://www.phoenixcontact.com/in/products/1287433>

DIN rail housing, ICS filler, closed, width: 25 mm, height: 7.25 mm, depth: 67.3 mm, color: blue (similar RAL 5015)



ICS25-F67S-1018 - Connection plate

1287430

<https://www.phoenixcontact.com/in/products/1287430>

DIN rail housing, ICS filler, closed, width: 25 mm, height: 7.25 mm, depth: 67.3 mm, color: yellow (similar RAL 1018)



ICS25-F22S-9005 - Connection plate

1072520

<https://www.phoenixcontact.com/in/products/1072520>



ICS25-F90S-7035 - Connection plate

1287425

<https://www.phoenixcontact.com/in/products/1287425>

DIN rail housing, ICS filler, closed, width: 25 mm, height: 7.25 mm, depth: 89.8 mm, color: light gray (similar RAL 7035)



ICS25-F90S-9005 - Connection plate

1287415

<https://www.phoenixcontact.com/in/products/1287415>

DIN rail housing, ICS filler, closed, width: 25 mm, height: 7.25 mm, depth: 89.8 mm, color: black (similar RAL 9005)



ICS25-F22S-9005 - Connection plate

1072520

<https://www.phoenixcontact.com/in/products/1072520>



ICS25-F90S-5015 - Connection plate

1287416

<https://www.phoenixcontact.com/in/products/1287416>

DIN rail housing, ICS filler, closed, width: 25 mm, height: 7.25 mm, depth: 89.8 mm, color: blue (similar RAL 5015)



ICS25-F90S-1018 - Connection plate

1287414

<https://www.phoenixcontact.com/in/products/1287414>

DIN rail housing, ICS filler, closed, width: 25 mm, height: 7.25 mm, depth: 89.8 mm, color: yellow (similar RAL 1018)



ICS25-F22S-9005 - Connection plate

1072520

<https://www.phoenixcontact.com/in/products/1072520>



ICS25-F112S-7035 - Connection plate

1287413

<https://www.phoenixcontact.com/in/products/1287413>

DIN rail housing, ICS filler, closed, width: 25 mm, height: 7.25 mm, depth: 112.3 mm, color: light gray (similar RAL 7035)



ICS25-F112S-9005 - Connection plate

1287411

<https://www.phoenixcontact.com/in/products/1287411>

DIN rail housing, ICS filler, closed, width: 25 mm, height: 7.25 mm, depth: 112.3 mm, color: black (similar RAL 9005)



ICS25-F22S-9005 - Connection plate

1072520

<https://www.phoenixcontact.com/in/products/1072520>



ICS25-F112S-5015 - Connection plate

1287412

<https://www.phoenixcontact.com/in/products/1287412>

DIN rail housing, ICS filler, closed, width: 25 mm, height: 7.25 mm, depth: 112.3 mm, color: blue (similar RAL 5015)



ICS25-F112S-1018 - Connection plate

1287410

<https://www.phoenixcontact.com/in/products/1287410>

DIN rail housing, ICS filler, closed, width: 25 mm, height: 7.25 mm, depth: 112.3 mm, color: yellow (similar RAL 1018)



ICS25-F22S-9005 - Connection plate

1072520

<https://www.phoenixcontact.com/in/products/1072520>



ICS25-F22A-7035 - Connection plate

2203894

<https://www.phoenixcontact.com/in/products/2203894>



DIN rail housing, ICS filler, with antenna function cutout, width: 25 mm, height: 7.25 mm, depth: 22.4 mm, color: light gray (similar RAL 7035)

ICS25-F22A6-7035 - Connection plate

1287369

<https://www.phoenixcontact.com/in/products/1287369>



DIN rail housing, ICS filler, with antenna function cutout, width: 25 mm, height: 7.25 mm, depth: 22.4 mm, color: light gray (similar RAL 7035)

ICS25-F22S-9005 - Connection plate

1072520

<https://www.phoenixcontact.com/in/products/1072520>



ICS25-F22A-9005 - Connection plate

1072502

<https://www.phoenixcontact.com/in/products/1072502>

DIN rail housing, ICS filler, with antenna function cutout, width: 25 mm, height: 7.25 mm, depth: 22.4 mm, color: black (similar RAL 9005)

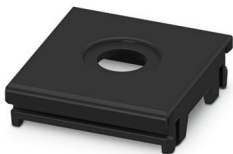


ICS25-F22A6-9005 - Connection plate

1287367

<https://www.phoenixcontact.com/in/products/1287367>

DIN rail housing, ICS filler, with antenna function cutout, width: 25 mm, height: 7.25 mm, depth: 22.4 mm, color: black (similar RAL 9005)



ICS25-F22S-9005 - Connection plate

1072520

<https://www.phoenixcontact.com/in/products/1072520>

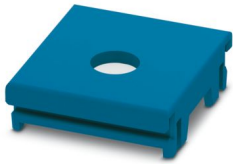


ICS25-F22A-5015 - Connection plate

1071642

<https://www.phoenixcontact.com/in/products/1071642>

DIN rail housing, ICS filler, with antenna function cutout, width: 25 mm, height: 7.25 mm, depth: 22.4 mm, color: blue (similar RAL 5015)

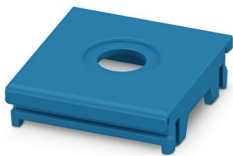


ICS25-F22A6-5015 - Connection plate

1287368

<https://www.phoenixcontact.com/in/products/1287368>

DIN rail housing, ICS filler, with antenna function cutout, width: 25 mm, height: 7.25 mm, depth: 22.4 mm, color: blue (similar RAL 5015)



ICS25-F22S-9005 - Connection plate

1072520

<https://www.phoenixcontact.com/in/products/1072520>



ICS25-F22A-1018 - Connection plate

1287376

<https://www.phoenixcontact.com/in/products/1287376>

DIN rail housing, ICS filler, with antenna function cutout, width: 25 mm, height: 7.25 mm, depth: 22.4 mm, color: yellow (similar RAL 1018)



ICS25-F22A6-1018 - Connection plate

1287366

<https://www.phoenixcontact.com/in/products/1287366>

DIN rail housing, ICS filler, with antenna function cutout, width: 25 mm, height: 7.25 mm, depth: 22.4 mm, color: yellow (similar RAL 1018)



ICS25-F22S-9005 - Connection plate

1072520

<https://www.phoenixcontact.com/in/products/1072520>



ICS25-F22U-7035 - Connection plate

1053046

<https://www.phoenixcontact.com/in/products/1053046>

DIN rail housing, ICS filler, with USB function cutout, width: 25 mm, height: 7.25 mm, depth: 22.4 mm, color: light gray (similar RAL 7035)



ICS25-F22U-9005 - Connection plate

1072494

<https://www.phoenixcontact.com/in/products/1072494>

DIN rail housing, ICS filler, with USB function cutout, width: 25 mm, height: 7.25 mm, depth: 22.4 mm, color: black (similar RAL 9005)



ICS25-F22S-9005 - Connection plate

1072520

<https://www.phoenixcontact.com/in/products/1072520>

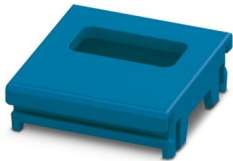


ICS25-F22U-5015 - Connection plate

1071629

<https://www.phoenixcontact.com/in/products/1071629>

DIN rail housing, ICS filler, with USB function cutout, width: 25 mm, height: 7.25 mm, depth: 22.4 mm, color: blue (similar RAL 5015)



ICS25-F22U-1018 - Connection plate

1287377

<https://www.phoenixcontact.com/in/products/1287377>

DIN rail housing, ICS filler, with USB function cutout, width: 25 mm, height: 7.25 mm, depth: 22.4 mm, color: yellow (similar RAL 1018)



ICS25-F22S-9005 - Connection plate

1072520

<https://www.phoenixcontact.com/in/products/1072520>



ICS25-F22J-7035 - Connection plate

2203895

<https://www.phoenixcontact.com/in/products/2203895>

DIN rail housing, ICS filler, with RJ45 function cutout, width: 25 mm, height: 7.25 mm, depth: 22.4 mm, color: light gray (similar RAL 7035)



ICS25-F22J-9005 - Connection plate

1072501

<https://www.phoenixcontact.com/in/products/1072501>

DIN rail housing, ICS filler, with RJ45 function cutout, width: 25 mm, height: 7.25 mm, depth: 22.4 mm, color: black (similar RAL 9005)



ICS25-F22S-9005 - Connection plate

1072520

<https://www.phoenixcontact.com/in/products/1072520>

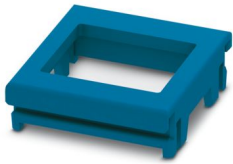


ICS25-F22J-5015 - Connection plate

1071641

<https://www.phoenixcontact.com/in/products/1071641>

DIN rail housing, ICS filler, with RJ45 function cutout, width: 25 mm, height: 7.25 mm, depth: 22.4 mm, color: blue (similar RAL 5015)

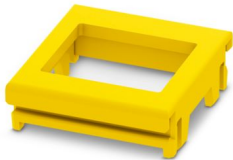


ICS25-F22J-1018 - Connection plate

1287378

<https://www.phoenixcontact.com/in/products/1287378>

DIN rail housing, ICS filler, with RJ45 function cutout, width: 25 mm, height: 7.25 mm, depth: 22.4 mm, color: yellow (similar RAL 1018)



ICS25-F22S-9005 - Connection plate

1072520

<https://www.phoenixcontact.com/in/products/1072520>



ICS25-F22M12-7035 - Connection plate

1558623

<https://www.phoenixcontact.com/in/products/1558623>

DIN rail housing, ICS filler, with M12 function cutout, width: 25 mm, height: 7.25 mm, depth: 22.4 mm, color: light gray (similar RAL 7035)

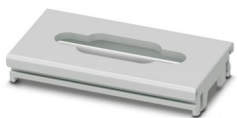


ICS25-F45D9-7035 - Connection plate

1053054

<https://www.phoenixcontact.com/in/products/1053054>

DIN rail housing, ICS filler, with D-SUB 9 function cutout, width: 25 mm, height: 7.25 mm, depth: 44.9 mm, color: light gray (similar RAL 7035)



ICS25-F22S-9005 - Connection plate

1072520

<https://www.phoenixcontact.com/in/products/1072520>



ICS25-F45D9-9005 - Connection plate

1072500

<https://www.phoenixcontact.com/in/products/1072500>

DIN rail housing, ICS filler, with D-SUB 9 function cutout, width: 25 mm, height: 7.25 mm, depth: 44.9 mm, color: black (similar RAL 9005)

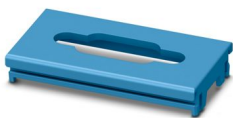


ICS25-F45D9-5015 - Connection plate

1071639

<https://www.phoenixcontact.com/in/products/1071639>

DIN rail housing, ICS filler, with D-SUB 9 function cutout, width: 25 mm, height: 7.25 mm, depth: 44.9 mm, color: blue (similar RAL 5015)



ICS25-F22S-9005 - Connection plate

1072520

<https://www.phoenixcontact.com/in/products/1072520>



ICS25-F45D9-1018 - Connection plate

1287374

<https://www.phoenixcontact.com/in/products/1287374>

DIN rail housing, ICS filler, with D-SUB 9 function cutout, width: 25 mm, height: 7.25 mm, depth: 44.9 mm, color: yellow (similar RAL 1018)



ICS25-F45D15-7035 - Connection plate

2203896

<https://www.phoenixcontact.com/in/products/2203896>

DIN rail housing, ICS filler, with D-SUB 15 function cutout, width: 25 mm, height: 7.25 mm, depth: 44.9 mm, color: light gray (similar RAL 7035)



ICS25-F22S-9005 - Connection plate

1072520

<https://www.phoenixcontact.com/in/products/1072520>



ICS25-F45D15-9005 - Connection plate

1072495

<https://www.phoenixcontact.com/in/products/1072495>

DIN rail housing, ICS filler, with D-SUB 15 function cutout, width: 25 mm, height: 7.25 mm, depth: 44.9 mm, color: black (similar RAL 9005)



ICS25-F45D15-5015 - Connection plate

1071634

<https://www.phoenixcontact.com/in/products/1071634>

DIN rail housing, ICS filler, with D-SUB 15 function cutout, width: 25 mm, height: 7.25 mm, depth: 44.9 mm, color: blue (similar RAL 5015)



ICS25-F22S-9005 - Connection plate

1072520

<https://www.phoenixcontact.com/in/products/1072520>



ICS25-F45D15-1018 - Connection plate

1287375

<https://www.phoenixcontact.com/in/products/1287375>

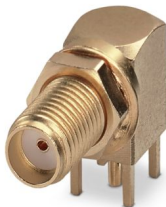
DIN rail housing, ICS filler, with D-SUB 15 function cutout, width: 25 mm, height: 7.25 mm, depth: 44.9 mm, color: yellow (similar RAL 1018)



CUC-COX-J1M-A/KBS - Coaxial PCB connector

1340153

<https://www.phoenixcontact.com/in/products/1340153>



Coaxial PCB connector, degree of protection: IP20, number of positions: 1, 12 Gbps, material: Metal, connection method: Solder connection, cable outlet: straight, for additional information, see the product range drawing in the Download Center

ICS25-F22S-9005 - Connection plate

1072520

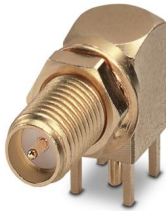
<https://www.phoenixcontact.com/in/products/1072520>



CUC-COX-J1M-A/LBS - Coaxial PCB connector

1340152

<https://www.phoenixcontact.com/in/products/1340152>



Coaxial PCB connector, degree of protection: IP20, number of positions: 1, 12 Gbps, material: Metal, connection method: Solder connection, cable outlet: straight

CUC-USB2.0-J1ST-AH/UAF-THT - USB PCB connectors

1332631

<https://www.phoenixcontact.com/in/products/1332631>



USB PCB connectors, degree of protection: IP20, number of positions: 4, 480 Mbps, material: Metal, connection method: Solder connection, USB 2.0

ICS25-F22S-9005 - Connection plate

1072520

<https://www.phoenixcontact.com/in/products/1072520>



CUC-USB2.0-J1ST-AH/UAF-SMD - USB PCB connectors

1332634

<https://www.phoenixcontact.com/in/products/1332634>



USB PCB connectors, degree of protection: IP20, number of positions: 4, 480 Mbps, material: Metal, connection method: Solder connection, USB 2.0

CUC-USB3.0-J1ST-AH/UAF-THT - USB PCB connectors

1332637

<https://www.phoenixcontact.com/in/products/1332637>



USB PCB connectors, degree of protection: IP20, number of positions: 9, 5 Gbps, material: Metal, connection method: Solder connection, USB 3.0

ICS25-F22S-9005 - Connection plate

1072520

<https://www.phoenixcontact.com/in/products/1072520>



CUC-SP-J1ST-AR4LB - RJ45 PCB connector

1149868

<https://www.phoenixcontact.com/in/products/1149868>



RJ45 PCB connector, degree of protection: IP20, number of positions: 8, 10
Gbps, material: Metal, connection method: THT wave

CUC-SP-J1ST-AR4LB-LED - RJ45 PCB connector

1149866

<https://www.phoenixcontact.com/in/products/1149866>



RJ45 PCB connector, degree of protection: IP20, number of positions: 8, 10
Gbps, material: Metal, connection method: THT wave

ICS25-F22S-9005 - Connection plate

1072520

<https://www.phoenixcontact.com/in/products/1072520>



VS-09-ST-DSUB-ER - Contact insert

1688382

<https://www.phoenixcontact.com/in/products/1688382>

D-SUB contact insert, shell size 1, with 9 signal contacts, type of contact pin, for PCB mounting, angled, fixing with M3 thread and solder pins, for panel mounting frame VS-09-...



VS-09-BU-DSUB-ER - Contact insert

1688405

<https://www.phoenixcontact.com/in/products/1688405>

D-SUB contact insert, shell size 1, with 9 signal contacts, type of contact socket, for PCB mounting, angled, fixing with M3 thread and solder pins, for panel mounting frame VS-09-...



ICS25-F22S-9005 - Connection plate

1072520

<https://www.phoenixcontact.com/in/products/1072520>



VS-15-ST-DSUB-ER - Contact insert

1688081

<https://www.phoenixcontact.com/in/products/1688081>

D-SUB contact insert, shell size 2, with 15 signal contacts, type of contact pin, for PCB mounting, angled, fixing with M3 thread and solder pins, for panel mounting frame VS-15-...



VS-15-BU-DSUB-ER - Contact insert

1688120

<https://www.phoenixcontact.com/in/products/1688120>

D-SUB contact insert, shell size 2, with 15 signal contacts, type of contact socket, for PCB mounting, angled, fixing with M3 thread and solder pins, for panel mounting frame VS-15-...



ICS25-F22S-9005 - Connection plate

1072520

<https://www.phoenixcontact.com/in/products/1072520>

ICC25-TP1,5/5L3,5-1018 - PCB terminal block

1477248

<https://www.phoenixcontact.com/in/products/1477248>

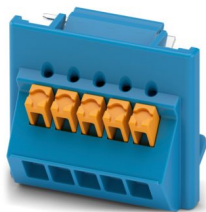


Printed circuit board terminal, nominal current: 8 A, rated voltage (III/2): 150 V, nominal cross section: 1.5 mm², number of potentials: 5, number of rows: 1, number of positions per row: 5, product range: ICC...-TP1,5/..L3,5, pitch: 3.5 mm, connection method: Push-in spring connection, mounting: Wave soldering, conductor/PCB connection direction: 0 °, color: yellow, Pin layout: Linear pinning, number of solder pins per potential: 1, type of packaging: packed in cardboard. Product with pin output on left side

ICC25-TP1,5/5L3,5-5015 - PCB terminal block

1477246

<https://www.phoenixcontact.com/in/products/1477246>



Printed circuit board terminal, nominal current: 8 A, rated voltage (III/2): 150 V, nominal cross section: 1.5 mm², number of potentials: 5, number of rows: 1, number of positions per row: 5, product range: ICC...-TP1,5/..L3,5, pitch: 3.5 mm, connection method: Push-in spring connection, mounting: Wave soldering, conductor/PCB connection direction: 0 °, color: blue, Pin layout: Linear pinning, number of solder pins per potential: 1, type of packaging: packed in cardboard. Product with pin output on left side

ICS25-F22S-9005 - Connection plate



1072520

<https://www.phoenixcontact.com/in/products/1072520>

ICC25-TP1,5/5L3,5-7035 - PCB terminal block

1474497

<https://www.phoenixcontact.com/in/products/1474497>



Printed circuit board terminal, nominal current: 8 A, rated voltage (III/2): 150 V, nominal cross section: 1.5 mm², number of potentials: 5, number of rows: 1, number of positions per row: 5, product range: ICC...-TP1,5/..L3,5, pitch: 3.5 mm, connection method: Push-in spring connection, mounting: Wave soldering, conductor/PCB connection direction: 0 °, color: light gray, Pin layout: Linear pinning, number of solder pins per potential: 1, type of packaging: packed in cardboard. Product with pin output on left side

ICC25-TP1,5/5L3,5-9005 - PCB terminal block

1477245

<https://www.phoenixcontact.com/in/products/1477245>



Printed circuit board terminal, nominal current: 8 A, rated voltage (III/2): 150 V, nominal cross section: 1.5 mm², number of potentials: 5, number of rows: 1, number of positions per row: 5, product range: ICC...-TP1,5/..L3,5, pitch: 3.5 mm, connection method: Push-in spring connection, mounting: Wave soldering, conductor/PCB connection direction: 0 °, color: black, Pin layout: Linear pinning, number of solder pins per potential: 1, type of packaging: packed in cardboard. Product with pin output on left side

ICS25-F22S-9005 - Connection plate



1072520

<https://www.phoenixcontact.com/in/products/1072520>

ICC25-TP1,5/5R3,5-1018 - PCB terminal block

1477331

<https://www.phoenixcontact.com/in/products/1477331>



Printed circuit board terminal, nominal current: 8 A, rated voltage (III/2): 150 V, nominal cross section: 1.5 mm², number of potentials: 5, number of rows: 1, number of positions per row: 5, product range: ICC...-TP1,5/..R3,5, pitch: 3.5 mm, connection method: Push-in spring connection, mounting: Wave soldering, conductor/PCB connection direction: 0 °, color: yellow, Pin layout: Linear pinning, number of solder pins per potential: 1, type of packaging: packed in cardboard. Product with pin output on right side

ICC25-TP1,5/5R3,5-5015 - PCB terminal block

1477330

<https://www.phoenixcontact.com/in/products/1477330>



Printed circuit board terminal, nominal current: 8 A, rated voltage (III/2): 150 V, nominal cross section: 1.5 mm², number of potentials: 5, number of rows: 1, number of positions per row: 5, product range: ICC...-TP1,5/..R3,5, pitch: 3.5 mm, connection method: Push-in spring connection, mounting: Wave soldering, conductor/PCB connection direction: 0 °, color: blue, Pin layout: Linear pinning, number of solder pins per potential: 1, type of packaging: packed in cardboard. Product with pin output on right side

ICS25-F22S-9005 - Connection plate



1072520

<https://www.phoenixcontact.com/in/products/1072520>

ICC25-TP1,5/5R3,5-7035 - PCB terminal block

1474499

<https://www.phoenixcontact.com/in/products/1474499>



Printed circuit board terminal, nominal current: 8 A, rated voltage (III/2): 150 V, nominal cross section: 1.5 mm², number of potentials: 5, number of rows: 1, number of positions per row: 5, product range: ICC...-TP1,5/..R3,5, pitch: 3.5 mm, connection method: Push-in spring connection, mounting: Wave soldering, conductor/PCB connection direction: 0 °, color: light gray, Pin layout: Linear pinning, Solder pin [P]: 2.8 mm, number of solder pins per potential: 1, type of packaging: packed in cardboard. Product with pin output on right side

ICC25-TP1,5/5R3,5-9005 - PCB terminal block

1477328

<https://www.phoenixcontact.com/in/products/1477328>



Printed circuit board terminal, nominal current: 8 A, rated voltage (III/2): 150 V, nominal cross section: 1.5 mm², number of potentials: 5, number of rows: 1, number of positions per row: 5, product range: ICC...-TP1,5/..R3,5, pitch: 3.5 mm, connection method: Push-in spring connection, mounting: Wave soldering, conductor/PCB connection direction: 0 °, color: black, Pin layout: Linear pinning, number of solder pins per potential: 1, type of packaging: packed in cardboard. Product with pin output on right side

ICS25-F22S-9005 - Connection plate

1072520

<https://www.phoenixcontact.com/in/products/1072520>

ICC25-TP2,5/4L5,0-1018 - PCB terminal block

1477323

<https://www.phoenixcontact.com/in/products/1477323>

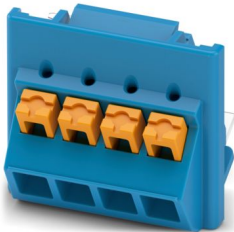


Printed circuit board terminal, nominal current: 18 A, rated voltage (III/2): 300 V, nominal cross section: 2.5 mm², number of potentials: 4, number of rows: 1, number of positions per row: 4, product range: ICC...-TP2,5/..L5,0, pitch: 5 mm, connection method: Push-in spring connection, mounting: Wave soldering, conductor/PCB connection direction: 0 °, color: yellow, Pin layout: Linear pinning, number of solder pins per potential: 1, type of packaging: packed in cardboard. Product with pin output on left side

ICC25-TP2,5/4L5,0-5015 - PCB terminal block

1477322

<https://www.phoenixcontact.com/in/products/1477322>



Printed circuit board terminal, nominal current: 18 A, rated voltage (III/2): 300 V, nominal cross section: 2.5 mm², number of potentials: 4, number of rows: 1, number of positions per row: 4, product range: ICC...-TP2,5/..L5,0, pitch: 5 mm, connection method: Push-in spring connection, mounting: Wave soldering, conductor/PCB connection direction: 0 °, color: blue, Pin layout: Linear pinning, number of solder pins per potential: 1, type of packaging: packed in cardboard. Product with pin output on left side

ICS25-F22S-9005 - Connection plate



1072520

<https://www.phoenixcontact.com/in/products/1072520>

ICC25-TP2,5/4L5,0-7035 - PCB terminal block

1474487

<https://www.phoenixcontact.com/in/products/1474487>



Printed circuit board terminal, nominal current: 18 A, rated voltage (III/2): 300 V, nominal cross section: 2.5 mm², number of potentials: 4, number of rows: 1, number of positions per row: 4, product range: ICC...-TP2,5/..L5,0, pitch: 5 mm, connection method: Push-in spring connection, mounting: Wave soldering, conductor/PCB connection direction: 0 °, color: light gray, Pin layout: Linear pinning, number of solder pins per potential: 1, type of packaging: packed in cardboard. Product with pin output on left side

ICC25-TP2,5/4L5,0-9005 - PCB terminal block

1477321

<https://www.phoenixcontact.com/in/products/1477321>



Printed circuit board terminal, nominal current: 18 A, rated voltage (III/2): 300 V, nominal cross section: 2.5 mm², number of potentials: 4, number of rows: 1, number of positions per row: 4, product range: ICC...-TP2,5/..L5,0, pitch: 5 mm, connection method: Push-in spring connection, mounting: Wave soldering, conductor/PCB connection direction: 0 °, color: black, Pin layout: Linear pinning, number of solder pins per potential: 1, type of packaging: packed in cardboard. Product with pin output on left side

ICS25-F22S-9005 - Connection plate



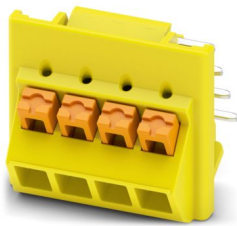
1072520

<https://www.phoenixcontact.com/in/products/1072520>

ICC25-TP2,5/4R5,0-1018 - PCB terminal block

1477327

<https://www.phoenixcontact.com/in/products/1477327>

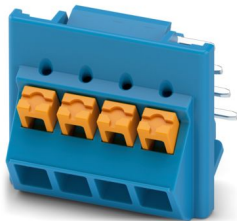


Printed circuit board terminal, nominal current: 18 A, rated voltage (III/2): 300 V, nominal cross section: 2.5 mm², number of potentials: 4, number of rows: 1, number of positions per row: 4, product range: ICC..-TP2,5/..R5,0, pitch: 5 mm, connection method: Push-in spring connection, mounting: Wave soldering, conductor/PCB connection direction: 0 °, color: yellow, Pin layout: Linear pinning, number of solder pins per potential: 1, type of packaging: packed in cardboard. Product with pin output on right side

ICC25-TP2,5/4R5,0-5015 - PCB terminal block

1477325

<https://www.phoenixcontact.com/in/products/1477325>



Printed circuit board terminal, nominal current: 18 A, rated voltage (III/2): 300 V, nominal cross section: 2.5 mm², number of potentials: 4, number of rows: 1, number of positions per row: 4, product range: ICC..-TP2,5/..R5,0, pitch: 5 mm, connection method: Push-in spring connection, mounting: Wave soldering, conductor/PCB connection direction: 0 °, color: blue, Pin layout: Linear pinning, number of solder pins per potential: 1, type of packaging: packed in cardboard. Product with pin output on right side

ICS25-F22S-9005 - Connection plate



1072520

<https://www.phoenixcontact.com/in/products/1072520>

ICC25-TP2,5/4R5,0-7035 - PCB terminal block

1474491

<https://www.phoenixcontact.com/in/products/1474491>



Printed circuit board terminal, nominal current: 18 A, rated voltage (III/2): 300 V, nominal cross section: 2.5 mm², number of potentials: 4, number of rows: 1, number of positions per row: 4, product range: ICC..-TP2,5/..R5,0, pitch: 5 mm, connection method: Push-in spring connection, mounting: Wave soldering, conductor/PCB connection direction: 0 °, color: light gray, Pin layout: Linear pinning, number of solder pins per potential: 1, type of packaging: packed in cardboard. Product with pin output on right side

ICC25-TP2,5/4R5,0-9005 - PCB terminal block

1477324

<https://www.phoenixcontact.com/in/products/1477324>



Printed circuit board terminal, nominal current: 18 A, rated voltage (III/2): 300 V, nominal cross section: 2.5 mm², number of potentials: 4, number of rows: 1, number of positions per row: 4, product range: ICC..-TP2,5/..R5,0, pitch: 5 mm, connection method: Push-in spring connection, mounting: Wave soldering, conductor/PCB connection direction: 0 °, color: black, Pin layout: Linear pinning, number of solder pins per potential: 1, type of packaging: packed in cardboard. Product with pin output on right side

ICS25-F22S-9005 - Connection plate



1072520

<https://www.phoenixcontact.com/in/products/1072520>

ICC25-TS1,5/5L3,5-1018 - PCB terminal block

1380328

<https://www.phoenixcontact.com/in/products/1380328>



Printed circuit board terminal, nominal current: 16 A, rated voltage (III/2): 150 V, nominal cross section: 1.5 mm², number of potentials: 5, number of rows: 1, number of positions per row: 5, product range: ICC...TS1,5/..L3,5, pitch: 3.5 mm, connection method: Screw connection with tension sleeve, screw head form: L Slotted, mounting: Wave soldering, conductor/PCB connection direction: 0 °, color: yellow, Pin layout: Linear pinning, number of solder pins per potential: 1, type of packaging: packed in cardboard. Product with pin output on left side

ICC25-TS1,5/5L3,5-5015 - PCB terminal block

1380316

<https://www.phoenixcontact.com/in/products/1380316>



Printed circuit board terminal, nominal current: 16 A, rated voltage (III/2): 150 V, nominal cross section: 1.5 mm², number of potentials: 5, number of rows: 1, number of positions per row: 5, product range: ICC...TS1,5/..L3,5, pitch: 3.5 mm, connection method: Screw connection with tension sleeve, screw head form: L Slotted, mounting: Wave soldering, conductor/PCB connection direction: 0 °, color: blue, Pin layout: Linear pinning, number of solder pins per potential: 1, type of packaging: packed in cardboard. Product with pin output on left side

ICS25-F22S-9005 - Connection plate



1072520

<https://www.phoenixcontact.com/in/products/1072520>

ICC25-TS1,5/5L3,5-7035 - PCB terminal block

1380295

<https://www.phoenixcontact.com/in/products/1380295>



Printed circuit board terminal, nominal current: 16 A, rated voltage (III/2): 150 V, nominal cross section: 1.5 mm², number of potentials: 5, number of rows: 1, number of positions per row: 5, product range: ICC...TS1,5/..L3,5, pitch: 3.5 mm, connection method: Screw connection with tension sleeve, screw head form: L Slotted, mounting: Wave soldering, conductor/PCB connection direction: 0 °, color: light gray, Pin layout: Linear pinning, number of solder pins per potential: 1, type of packaging: packed in cardboard. Product with pin output on left side

ICC25-TS1,5/5L3,5-9005 - PCB terminal block

1380308

<https://www.phoenixcontact.com/in/products/1380308>



Printed circuit board terminal, nominal current: 16 A, rated voltage (III/2): 150 V, nominal cross section: 1.5 mm², number of potentials: 5, number of rows: 1, number of positions per row: 5, product range: ICC...TS1,5/..L3,5, pitch: 3.5 mm, connection method: Screw connection with tension sleeve, screw head form: L Slotted, mounting: Wave soldering, conductor/PCB connection direction: 0 °, color: black, Pin layout: Linear pinning, number of solder pins per potential: 1, type of packaging: packed in cardboard. Product with pin output on left side

ICS25-F22S-9005 - Connection plate



1072520

<https://www.phoenixcontact.com/in/products/1072520>

ICC25-TS1,5/5R3,5-1018 - PCB terminal block

1380329

<https://www.phoenixcontact.com/in/products/1380329>



Printed circuit board terminal, nominal current: 16 A, rated voltage (III/2): 150 V, nominal cross section: 1.5 mm², number of potentials: 5, number of rows: 1, number of positions per row: 5, product range: ICC...-TS1,5/..R3,5, pitch: 3.5 mm, connection method: Screw connection with tension sleeve, screw head form: L Slotted, mounting: Wave soldering, conductor/PCB connection direction: 0 °, color: yellow, Pin layout: Linear pinning, number of solder pins per potential: 1, type of packaging: packed in cardboard. Product with pin output on right side

ICC25-TS1,5/5R3,5-5015 - PCB terminal block

1380317

<https://www.phoenixcontact.com/in/products/1380317>



Printed circuit board terminal, nominal current: 16 A, rated voltage (III/2): 150 V, nominal cross section: 1.5 mm², number of potentials: 5, number of rows: 1, number of positions per row: 5, product range: ICC...-TS1,5/..R3,5, pitch: 3.5 mm, connection method: Screw connection with tension sleeve, screw head form: L Slotted, mounting: Wave soldering, conductor/PCB connection direction: 0 °, color: blue, Pin layout: Linear pinning, number of solder pins per potential: 1, type of packaging: packed in cardboard. Product with pin output on right side

ICS25-F22S-9005 - Connection plate



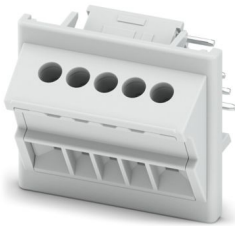
1072520

<https://www.phoenixcontact.com/in/products/1072520>

ICC25-TS1,5/5R3,5-7035 - PCB terminal block

1380298

<https://www.phoenixcontact.com/in/products/1380298>



Printed circuit board terminal, nominal current: 16 A, rated voltage (III/2): 150 V, nominal cross section: 1.5 mm², number of potentials: 5, number of rows: 1, number of positions per row: 5, product range: ICC...-TS1,5/..R3,5, pitch: 3.5 mm, connection method: Screw connection with tension sleeve, screw head form: L Slotted, mounting: Wave soldering, conductor/PCB connection direction: 0 °, color: light gray, Pin layout: Linear pinning, number of solder pins per potential: 1, type of packaging: packed in cardboard. Product with pin output on right side

ICC25-TS1,5/5R3,5-9005 - PCB terminal block

1380309

<https://www.phoenixcontact.com/in/products/1380309>



Printed circuit board terminal, nominal current: 16 A, rated voltage (III/2): 150 V, nominal cross section: 1.5 mm², number of potentials: 5, number of rows: 1, number of positions per row: 5, product range: ICC...-TS1,5/..R3,5, pitch: 3.5 mm, connection method: Screw connection with tension sleeve, screw head form: L Slotted, mounting: Wave soldering, conductor/PCB connection direction: 0 °, color: black, Pin layout: Linear pinning, number of solder pins per potential: 1, type of packaging: packed in cardboard. Product with pin output on right side

ICS25-F22S-9005 - Connection plate



1072520

<https://www.phoenixcontact.com/in/products/1072520>

ICC25-TS2,5/4L5,0-1018 - PCB terminal block

1380324

<https://www.phoenixcontact.com/in/products/1380324>



Printed circuit board terminal, nominal current: 24 A, rated voltage (III/2): 300 V, nominal cross section: 2.5 mm², number of potentials: 4, number of rows: 1, number of positions per row: 4, product range: ICC...-TS2,5/..L5,0, pitch: 5 mm, connection method: Screw connection with tension sleeve, screw head form: H1L Slotted Phillips recess, mounting: Wave soldering, conductor/PCB connection direction: 0 °, color: yellow, Pin layout: Linear pinning, number of solder pins per potential: 1, type of packaging: packed in cardboard. Product with pin output on left side

ICC25-TS2,5/4L5,0-5015 - PCB terminal block

1380314

<https://www.phoenixcontact.com/in/products/1380314>



Printed circuit board terminal, nominal current: 24 A, rated voltage (III/2): 300 V, nominal cross section: 2.5 mm², number of potentials: 4, number of rows: 1, number of positions per row: 4, product range: ICC...-TS2,5/..L5,0, pitch: 5 mm, connection method: Screw connection with tension sleeve, screw head form: H1L Slotted Phillips recess, mounting: Wave soldering, conductor/PCB connection direction: 0 °, color: blue, Pin layout: Linear pinning, number of solder pins per potential: 1, type of packaging: packed in cardboard. Product with pin output on left side

ICS25-F22S-9005 - Connection plate



1072520

<https://www.phoenixcontact.com/in/products/1072520>

ICC25-TS2,5/4L5,0-7035 - PCB terminal block

1380293

<https://www.phoenixcontact.com/in/products/1380293>



Printed circuit board terminal, nominal current: 24 A, rated voltage (III/2): 300 V, nominal cross section: 2.5 mm², number of potentials: 4, number of rows: 1, number of positions per row: 4, product range: ICC...-TS2,5/..L5,0, pitch: 5 mm, connection method: Screw connection with tension sleeve, screw head form: H1L Slotted Phillips recess, mounting: Wave soldering, conductor/PCB connection direction: 0 °, color: light gray, Pin layout: Linear pinning, number of solder pins per potential: 1, type of packaging: packed in cardboard. Product with pin output on left side

ICC25-TS2,5/4L5,0-9005 - PCB terminal block

1380305

<https://www.phoenixcontact.com/in/products/1380305>



Printed circuit board terminal, nominal current: 24 A, rated voltage (III/2): 300 V, nominal cross section: 2.5 mm², number of potentials: 4, number of rows: 1, number of positions per row: 4, product range: ICC...-TS2,5/..L5,0, pitch: 5 mm, connection method: Screw connection with tension sleeve, screw head form: H1L Slotted Phillips recess, mounting: Wave soldering, conductor/PCB connection direction: 0 °, color: black, Pin layout: Linear pinning, number of solder pins per potential: 1, type of packaging: packed in cardboard. Product with pin output on left side

ICS25-F22S-9005 - Connection plate



1072520

<https://www.phoenixcontact.com/in/products/1072520>

ICC25-TS2,5/4R5,0-1018 - PCB terminal block

1380326

<https://www.phoenixcontact.com/in/products/1380326>

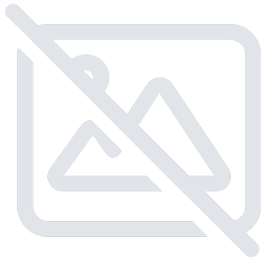


Printed circuit board terminal, nominal current: 24 A, rated voltage (III/2): 300 V, nominal cross section: 2.5 mm², number of potentials: 4, number of rows: 1, number of positions per row: 4, product range: ICC..-TS2,5/..R5,0, pitch: 5 mm, connection method: Screw connection with tension sleeve, screw head form: H1L Slotted Phillips recess, mounting: Wave soldering, conductor/PCB connection direction: 0 °, color: yellow, Pin layout: Linear pinning, number of solder pins per potential: 1, type of packaging: packed in cardboard. Product with pin output on right side

ICC25-TS2,5/4R5,0-5015 - PCB terminal block

1380315

<https://www.phoenixcontact.com/in/products/1380315>



Printed circuit board terminal, nominal current: 24 A, rated voltage (III/2): 300 V, nominal cross section: 2.5 mm², number of potentials: 4, number of rows: 1, number of positions per row: 4, product range: ICC..-TS2,5/..R5,0, pitch: 5 mm, connection method: Screw connection with tension sleeve, screw head form: H1L Slotted Phillips recess, mounting: Wave soldering, conductor/PCB connection direction: 0 °, color: blue, Pin layout: Linear pinning, number of solder pins per potential: 1, type of packaging: packed in cardboard. Product with pin output on right side

ICS25-F22S-9005 - Connection plate



1072520

<https://www.phoenixcontact.com/in/products/1072520>

ICC25-TS2,5/4R5,0-7035 - PCB terminal block

1380294

<https://www.phoenixcontact.com/in/products/1380294>



Printed circuit board terminal, nominal current: 24 A, rated voltage (III/2): 300 V, nominal cross section: 2.5 mm², number of potentials: 4, number of rows: 1, number of positions per row: 4, product range: ICC..-TS2,5/..R5,0, pitch: 5 mm, connection method: Screw connection with tension sleeve, screw head form: H1L Slotted Phillips recess, mounting: Wave soldering, conductor/PCB connection direction: 0 °, color: light gray, Pin layout: Linear pinning, number of solder pins per potential: 1, type of packaging: packed in cardboard. Product with pin output on right side

ICC25-TS2,5/4R5,0-9005 - PCB terminal block

1380306

<https://www.phoenixcontact.com/in/products/1380306>



Printed circuit board terminal, nominal current: 24 A, rated voltage (III/2): 300 V, nominal cross section: 2.5 mm², number of potentials: 4, number of rows: 1, number of positions per row: 4, product range: ICC..-TS2,5/..R5,0, pitch: 5 mm, connection method: Screw connection with tension sleeve, screw head form: H1L Slotted Phillips recess, mounting: Wave soldering, conductor/PCB connection direction: 0 °, color: black, Pin layout: Linear pinning, number of solder pins per potential: 1, type of packaging: packed in cardboard. Product with pin output on right side

ICS25-F22S-9005 - Connection plate



1072520

<https://www.phoenixcontact.com/in/products/1072520>

ICC25-H/4L5,0-1018 - PCB header

1112639

<https://www.phoenixcontact.com/in/products/1112639>



PCB headers, nominal cross section: 2.5 mm², color: yellow, nominal current: 16 A, rated voltage (III/2): 320 V, contact surface: Sn, contact connection type: Pin, number of potentials: 4, number of rows: 1, number of positions: 4, number of connections: 4, product range: ICC...-H/...L5,0, pitch: 5 mm, mounting: Wave soldering, pin layout: Linear pinning, solder pin [P]: 3.5 mm, number of solder pins per potential: 1, plug-in system: ICC 2,5, Pin connector pattern alignment: Standard, locking: Snap-in locking, mounting method: without, type of packaging: Box packaging, Product with pin output on left side

ICC25-H/4L5,0-5015 - PCB header

1071451

<https://www.phoenixcontact.com/in/products/1071451>



PCB headers, nominal cross section: 2.5 mm², color: blue, nominal current: 16 A, rated voltage (III/2): 320 V, contact surface: Sn, contact connection type: Pin, number of potentials: 4, number of rows: 1, number of positions: 4, number of connections: 4, product range: ICC...-H/...L5,0, pitch: 5 mm, mounting: Wave soldering, pin layout: Linear pinning, solder pin [P]: 3.5 mm, number of solder pins per potential: 1, plug-in system: ICC 2,5, Pin connector pattern alignment: Standard, locking: Snap-in locking, mounting method: without, type of packaging: Box packaging, Product with pin output on left side

ICS25-F22S-9005 - Connection plate



1072520

<https://www.phoenixcontact.com/in/products/1072520>

ICC25-H/4L5,0-6021 - PCB header

1207794

<https://www.phoenixcontact.com/in/products/1207794>



PCB headers, nominal cross section: 2.5 mm², color: green, nominal current: 16 A, rated voltage (III/2): 320 V, contact surface: Sn, contact connection type: Pin, number of potentials: 4, number of rows: 1, number of positions: 4, number of connections: 4, product range: ICC...-H/...L5,0, pitch: 5 mm, mounting: Wave soldering, pin layout: Linear pinning, solder pin [P]: 3.5 mm, number of solder pins per potential: 1, plug-in system: ICC 2,5, Pin connector pattern alignment: Standard, locking: Snap-in locking, mounting method: without, type of packaging: Box packaging, Product with pin output on left side

ICC25-H/4L5,0-7035 - PCB header

2203902

<https://www.phoenixcontact.com/in/products/2203902>



PCB headers, nominal cross section: 2.5 mm², color: light gray, nominal current: 16 A, rated voltage (III/2): 320 V, contact surface: Sn, contact connection type: Pin, number of potentials: 4, number of rows: 1, number of positions: 4, number of connections: 4, product range: ICC...-H/...L5,0, pitch: 5 mm, mounting: Wave soldering, pin layout: Linear pinning, solder pin [P]: 3.5 mm, number of solder pins per potential: 1, plug-in system: ICC 2,5, Pin connector pattern alignment: Standard, locking: Snap-in locking, mounting method: without, type of packaging: Box packaging, Product with pin output on left side

ICS25-F22S-9005 - Connection plate



1072520

<https://www.phoenixcontact.com/in/products/1072520>

ICC25-H/4L5,0-9005 - PCB header

1072486

<https://www.phoenixcontact.com/in/products/1072486>



PCB headers, nominal cross section: 2.5 mm², color: black, nominal current: 16 A, rated voltage (III/2): 320 V, contact surface: Sn, contact connection type: Pin, number of potentials: 4, number of rows: 1, number of positions: 4, number of connections: 4, product range: ICC...-H/...L5,0, pitch: 5 mm, mounting: Wave soldering, pin layout: Linear pinning, solder pin [P]: 3.5 mm, number of solder pins per potential: 1, plug-in system: ICC 2,5, Pin connector pattern alignment: Standard, locking: Snap-in locking, mounting method: without, type of packaging: Box packaging, Product with pin output on left side

ICC25-H/4R5,0-1018 - PCB header

1112640

<https://www.phoenixcontact.com/in/products/1112640>



PCB headers, nominal cross section: 2.5 mm², color: yellow, nominal current: 16 A, rated voltage (III/2): 320 V, contact surface: Sn, contact connection type: Pin, number of potentials: 4, number of rows: 1, number of positions: 4, number of connections: 4, product range: ICC...-H/...R5,0, pitch: 5 mm, mounting: Wave soldering, pin layout: Linear pinning, solder pin [P]: 3.5 mm, number of solder pins per potential: 1, plug-in system: ICC 2,5, Pin connector pattern alignment: Standard, locking: Snap-in locking, mounting method: without, type of packaging: Box packaging, Product with pin output on right side

ICS25-F22S-9005 - Connection plate



1072520

<https://www.phoenixcontact.com/in/products/1072520>

ICC25-H/4R5,0-5015 - PCB header

1071449

<https://www.phoenixcontact.com/in/products/1071449>



PCB headers, nominal cross section: 2.5 mm², color: blue, nominal current: 16 A, rated voltage (III/2): 320 V, contact surface: Sn, contact connection type: Pin, number of potentials: 4, number of rows: 1, number of positions: 4, number of connections: 4, product range: ICC...-H/...R5,0, pitch: 5 mm, mounting: Wave soldering, pin layout: Linear pinning, solder pin [P]: 3.5 mm, number of solder pins per potential: 1, plug-in system: ICC 2,5, Pin connector pattern alignment: Standard, locking: Snap-in locking, mounting method: without, type of packaging: Box packaging, Product with pin output on right side

ICC25-H/4R5,0-6021 - PCB header

1475131

<https://www.phoenixcontact.com/in/products/1475131>



PCB headers, nominal cross section: 2.5 mm², color: green, nominal current: 16 A, rated voltage (III/2): 320 V, contact surface: Sn, contact connection type: Pin, number of potentials: 4, number of rows: 1, number of positions: 4, number of connections: 4, product range: ICC...-H/...R5,0, pitch: 5 mm, mounting: Wave soldering, pin layout: Linear pinning, solder pin [P]: 3.5 mm, number of solder pins per potential: 1, plug-in system: ICC 2,5, Pin connector pattern alignment: Standard, locking: Snap-in locking, mounting method: without, type of packaging: Box packaging, Product with pin output on right side

ICS25-F22S-9005 - Connection plate



1072520

<https://www.phoenixcontact.com/in/products/1072520>

ICC25-H/4R5,0-7035 - PCB header

2203903

<https://www.phoenixcontact.com/in/products/2203903>



PCB headers, nominal cross section: 2.5 mm², color: light gray, nominal current: 16 A, rated voltage (III/2): 320 V, contact surface: Sn, contact connection type: Pin, number of potentials: 4, number of rows: 1, number of positions: 4, number of connections: 4, product range: ICC...H/...R5,0, pitch: 5 mm, mounting: Wave soldering, pin layout: Linear pinning, solder pin [P]: 3.5 mm, number of solder pins per potential: 1, plug-in system: ICC 2,5, Pin connector pattern alignment: Standard, locking: Snap-in locking, mounting method: without, type of packaging: Box packaging, Product with pin output on right side

ICC25-H/4R5,0-9005 - PCB header

1072485

<https://www.phoenixcontact.com/in/products/1072485>



PCB headers, nominal cross section: 2.5 mm², color: black, nominal current: 16 A, rated voltage (III/2): 320 V, contact surface: Sn, contact connection type: Pin, number of potentials: 4, number of rows: 1, number of positions: 4, number of connections: 4, product range: ICC...H/...R5,0, pitch: 5 mm, mounting: Wave soldering, pin layout: Linear pinning, solder pin [P]: 3.5 mm, number of solder pins per potential: 1, plug-in system: ICC 2,5, Pin connector pattern alignment: Standard, locking: Snap-in locking, mounting method: without, type of packaging: Box packaging, Product with pin output on right side

ICS25-F22S-9005 - Connection plate



1072520

<https://www.phoenixcontact.com/in/products/1072520>

ICC25-H/5L3,5-1018 - PCB header

1357417

<https://www.phoenixcontact.com/in/products/1357417>



PCB headers, color: yellow, nominal current: 8 A, rated voltage (III/2): 150 V, contact surface: Sn, contact connection type: Pin, number of potentials: 5, number of rows: 1, number of positions: 5, number of connections: 5, product range: ICC...-H/...L3,5, pitch: 3.5 mm, mounting: Wave soldering, pin layout: Linear pinning, solder pin [P]: 2.8 mm, number of solder pins per potential: 1, plug-in system: ICC 1,5, Pin connector pattern alignment: Standard, locking: Snap-in locking, mounting method: without, type of packaging: Box packaging, Product with pin output on left side

ICC25-H/5L3,5-5015 - PCB header

1522853

<https://www.phoenixcontact.com/in/products/1522853>



PCB headers, color: blue, nominal current: 8 A, rated voltage (III/2): 150 V, contact surface: Sn, contact connection type: Pin, number of potentials: 5, number of rows: 1, number of positions: 5, number of connections: 5, product range: ICC...-H/...L3,5, pitch: 3.5 mm, mounting: Wave soldering, pin layout: Linear pinning, solder pin [P]: 2.8 mm, number of solder pins per potential: 1, plug-in system: ICC 1,5, Pin connector pattern alignment: Standard, locking: Snap-in locking, mounting method: without, type of packaging: Box packaging, Product with pin output on left side

ICS25-F22S-9005 - Connection plate



1072520

<https://www.phoenixcontact.com/in/products/1072520>

ICC25-H/5L3,5-7035 - PCB header

1084018

<https://www.phoenixcontact.com/in/products/1084018>

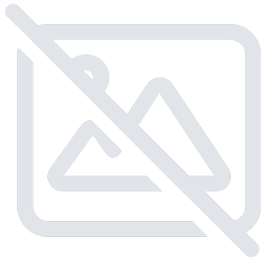


PCB headers, color: light gray, nominal current: 8 A, rated voltage (III/2): 150 V, contact surface: Sn, contact connection type: Pin, number of potentials: 5, number of rows: 1, number of positions: 5, number of connections: 5, product range: ICC...-H/...L3,5, pitch: 3.5 mm, mounting: Wave soldering, pin layout: Linear pinning, solder pin [P]: 2.8 mm, number of solder pins per potential: 1, plug-in system: ICC 1,5, Pin connector pattern alignment: Standard, locking: Snap-in locking, mounting method: without, type of packaging: Box packaging, Product with pin output on left side

ICC25-H/5L3,5-9005 - PCB header

1524091

<https://www.phoenixcontact.com/in/products/1524091>



PCB headers, color: black, nominal current: 8 A, rated voltage (III/2): 150 V, contact surface: Sn, contact connection type: Pin, number of potentials: 5, number of rows: 1, number of positions: 5, number of connections: 5, product range: ICC...-H/...L3,5, pitch: 3.5 mm, mounting: Wave soldering, pin layout: Linear pinning, solder pin [P]: 2.8 mm, number of solder pins per potential: 1, plug-in system: ICC 1,5, Pin connector pattern alignment: Standard, locking: Snap-in locking, mounting method: without, type of packaging: Box packaging, Product with pin output on left side

ICS25-F22S-9005 - Connection plate



1072520

<https://www.phoenixcontact.com/in/products/1072520>

ICC25-H/5R3,5-1018 - PCB header

1357416

<https://www.phoenixcontact.com/in/products/1357416>



PCB headers, color: yellow, nominal current: 8 A, rated voltage (III/2): 150 V, contact surface: Sn, contact connection type: Pin, number of potentials: 5, number of rows: 1, number of positions: 5, number of connections: 5, product range: ICC...-H/...R3,5, pitch: 3.5 mm, mounting: Wave soldering, pin layout: Linear pinning, solder pin [P]: 2.8 mm, number of solder pins per potential: 1, plug-in system: ICC 1,5, Pin connector pattern alignment: Standard, locking: Snap-in locking, mounting method: without, type of packaging: Box packaging, Product with pin output on right side

ICC25-H/5R3,5-5015 - PCB header

1643166

<https://www.phoenixcontact.com/in/products/1643166>



PCB headers, color: blue, nominal current: 8 A, rated voltage (III/2): 150 V, contact surface: Sn, contact connection type: Pin, number of potentials: 5, number of rows: 1, number of positions: 5, number of connections: 5, product range: ICC...-H/...R3,5, pitch: 3.5 mm, mounting: Wave soldering, pin layout: Linear pinning, solder pin [P]: 2.8 mm, number of solder pins per potential: 1, plug-in system: ICC 1,5, Pin connector pattern alignment: Standard, locking: Snap-in locking, mounting method: without, type of packaging: Box packaging, Product with pin output on right side

ICS25-F22S-9005 - Connection plate



1072520

<https://www.phoenixcontact.com/in/products/1072520>

ICC25-H/5R3,5-7035 - PCB header

1084017

<https://www.phoenixcontact.com/in/products/1084017>



PCB headers, color: light gray, nominal current: 8 A, rated voltage (III/2): 150 V, contact surface: Sn, contact connection type: Pin, number of potentials: 5, number of rows: 1, number of positions: 5, number of connections: 5, product range: ICC...-H/...R3,5, pitch: 3.5 mm, mounting: Wave soldering, pin layout: Linear pinning, solder pin [P]: 2.8 mm, number of solder pins per potential: 1, plug-in system: ICC 1,5, Pin connector pattern alignment: Standard, locking: Snap-in locking, mounting method: without, type of packaging: Box packaging, Product with pin output on right side

ICC25-H/5R3,5-9005 - PCB header

1524100

<https://www.phoenixcontact.com/in/products/1524100>



PCB headers, color: black, nominal current: 8 A, rated voltage (III/2): 150 V, contact surface: Sn, contact connection type: Pin, number of potentials: 5, number of rows: 1, number of positions: 5, number of connections: 5, product range: ICC...-H/...R3,5, pitch: 3.5 mm, mounting: Wave soldering, pin layout: Linear pinning, solder pin [P]: 2.8 mm, number of solder pins per potential: 1, plug-in system: ICC 1,5, Pin connector pattern alignment: Standard, locking: Snap-in locking, mounting method: without, type of packaging: Box packaging, Product with pin output on right side

ICS25-F22S-9005 - Connection plate



1072520

<https://www.phoenixcontact.com/in/products/1072520>

TBUS8-25,0-PPPPPPPP-5015 - DIN rail bus connectors

1071426

<https://www.phoenixcontact.com/in/products/1071426>

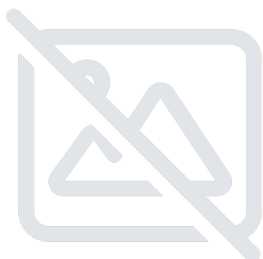


DIN rail connector, color: blue, nominal current: 6 A (parallel contacts), rated voltage (III/2): 32 V, number of positions: 8, product range: TBUS8-25..., pitch: 2.54 mm, mounting: DIN rail mounting, locking: without, mounting method: without, type of packaging: packed in cardboard, Item with gold-plated contacts, bus connectors for connecting with electronics housings, 8 parallel contacts

TBUS8-25,0-PPPPPPPP-7035 - DIN rail bus connectors

2202891

<https://www.phoenixcontact.com/in/products/2202891>



DIN rail connector, color: light gray, nominal current: 6 A (parallel contacts), rated voltage (III/2): 32 V, number of positions: 8, product range: TBUS8-25..., pitch: 2.54 mm, mounting: DIN rail mounting, locking: without, mounting method: without, type of packaging: packed in cardboard, Item with gold-plated contacts, bus connectors for connecting with electronics housings, 8 parallel contacts

ICS25-F22S-9005 - Connection plate

1072520

<https://www.phoenixcontact.com/in/products/1072520>



TBUS8-25,0-PPPPPPPP-9005 - DIN rail bus connectors

1072478

<https://www.phoenixcontact.com/in/products/1072478>

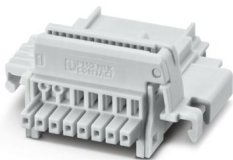


DIN rail connector, color: black, nominal current: 6 A (parallel contacts), rated voltage (III/2): 32 V, number of positions: 8, product range: TBUS8-25..., pitch: 2.54 mm, mounting: DIN rail mounting, locking: without, mounting method: without, type of packaging: packed in cardboard, Item with gold-plated contacts, bus connectors for connecting with electronics housings, 8 parallel contacts

TBUS8-25,0-PPPPPPPS-7035 - DIN rail bus connectors

2202890

<https://www.phoenixcontact.com/in/products/2202890>



DIN rail connector, color: light gray, nominal current: 6 A, 4 A (parallel contacts) (Serial contacts), rated voltage (III/2): 32 V, number of positions: 8, product range: TBUS8-25..., pitch: 2.54 mm, mounting: DIN rail mounting, locking: without, mounting method: without, type of packaging: packed in cardboard, Item with gold-plated contacts, bus connectors for connecting with electronics housings, 7 parallel contacts/1 serial contact

ICS25-F22S-9005 - Connection plate



1072520

<https://www.phoenixcontact.com/in/products/1072520>

TBUS8-25,0-PPPPPPPS-7035VPE100 - DIN rail bus connectors

1442879

<https://www.phoenixcontact.com/in/products/1442879>



DIN rail connector, color: light gray, nominal current: 6 A, 4 A (parallel contacts) (Serial contacts), rated voltage (III/2): 32 V, number of positions: 8, product range: TBUS8-25..., pitch: 2.54 mm, mounting: DIN rail mounting, locking: without, mounting method: without, type of packaging: packed in cardboard, Item with gold-plated contacts, bus connectors for connecting with electronics housings, 7 parallel contacts/1 serial contact

TBUS8-25,0-PPPPPPPS-9005 - DIN rail bus connectors

1072472

<https://www.phoenixcontact.com/in/products/1072472>



DIN rail connector, color: black, nominal current: 6 A, 4 A (parallel contacts) (Serial contacts), rated voltage (III/2): 32 V, number of positions: 8, product range: TBUS8-25..., pitch: 2.54 mm, mounting: DIN rail mounting, locking: without, mounting method: without, type of packaging: packed in cardboard, Item with gold-plated contacts, bus connectors for connecting with electronics housings, 7 parallel contacts/1 serial contact

ICS25-F22S-9005 - Connection plate



1072520

<https://www.phoenixcontact.com/in/products/1072520>

TBUS8-25,0-PPPPPPSS-7035 - DIN rail bus connectors

2202895

<https://www.phoenixcontact.com/in/products/2202895>



DIN rail connector, color: light gray, nominal current: 6 A, 4 A (parallel contacts) (Serial contacts), rated voltage (III/2): 32 V, number of positions: 8, product range: TBUS8-25..., pitch: 2.54 mm, mounting: DIN rail mounting, locking: without, mounting method: without, type of packaging: packed in cardboard, Item with gold-plated contacts, bus connectors for connecting with electronics housings, 6 parallel contacts/2 serial contacts

TBUS8-25,0-PPPPSSSS-7035 - DIN rail bus connectors

1156781

<https://www.phoenixcontact.com/in/products/1156781>



DIN rail connector, color: light gray, nominal current: 6 A, 4 A (parallel contacts) (Serial contacts), rated voltage (III/2): 32 V, number of positions: 8, product range: TBUS8-25..., pitch: 2.54 mm, mounting: DIN rail mounting, locking: without, mounting method: without, type of packaging: packed in cardboard, Item with gold-plated contacts, bus connectors for connecting with electronics housings, 4 parallel contacts/4 serial contacts

ICS25-F22S-9005 - Connection plate

1072520

<https://www.phoenixcontact.com/in/products/1072520>



TBUS8-25,0-PPPPSSSS-9005 - DIN rail bus connectors

1174596

<https://www.phoenixcontact.com/in/products/1174596>



DIN rail connector, color: black, nominal current: 6 A, 4 A (parallel contacts) (Serial contacts), rated voltage (III/2): 32 V, number of positions: 8, product range: TBUS8-25..., pitch: 2.54 mm, mounting: DIN rail mounting, locking: without, mounting method: without, type of packaging: packed in cardboard, Item with gold-plated contacts, bus connectors for connecting with electronics housings, 4 parallel contacts/4 serial contacts

TBUS8-25-BRIDGE-7035 - DIN rail bus connectors

1387008

<https://www.phoenixcontact.com/in/products/1387008>



DIN rail bus adapter for ICS, overall width: 25 mm, 8 parallel positions, color: light grey (similar to RAL 7035)

ICS25-F22S-9005 - Connection plate



1072520

<https://www.phoenixcontact.com/in/products/1072520>

TBUS8-SPL-KIT-7035 - DIN rail bus connectors

1488805

<https://www.phoenixcontact.com/in/products/1488805>



DIN rail connector, nominal cross section: 0.5 mm², color: light gray, nominal current: 6 A (parallel contacts), rated voltage (III/2): 32 V, contact surface: Au, contact connection type: Socket, number of potentials: 8, number of positions: 8, number of connections: 8, product range: TBUS8..2,54, pitch: 2.54 mm, connection method: Push-in spring connection, mounting: DIN rail mounting, conductor/PCB connection direction: 0 °, locking: Snap-in locking, mounting method: without, type of packaging: packed in cardboard, Integrated end bracket function

TBUS8-TAP-KIT-7035 - DIN rail bus connectors

1488806

<https://www.phoenixcontact.com/in/products/1488806>



DIN rail connector, nominal cross section: 0.5 mm², color: light gray, nominal current: 6 A (parallel contacts), rated voltage (III/2): 32 V, contact surface: Au, contact connection type: Socket, number of potentials: 8, number of positions: 8, number of connections: 8, product range: TBUS8..2,54, pitch: 2.54 mm, connection method: Push-in spring connection, mounting: DIN rail mounting, conductor/PCB connection direction: 0 °, locking: Snap-in locking, mounting method: without, type of packaging: packed in cardboard, Integrated end bracket function

ICS25-F22S-9005 - Connection plate



1072520

<https://www.phoenixcontact.com/in/products/1072520>

PSPT 2,5/ 4-ST BK - PCB connector

2202757

<https://www.phoenixcontact.com/in/products/2202757>



PCB connector, nominal cross section: 2.5 mm², color: black, nominal current: 16 A, rated voltage (III/2): 300 V, contact surface: Sn, contact connection type: Socket, number of potentials: 4, number of rows: 1, number of positions: 4, number of connections: 4, product range: PSPT 2,5/..-ST, pitch: 5 mm, connection method: Push-in spring connection, conductor/PCB connection direction: 0 °, locking clip: - Locking clip, locking: without, mounting method: without, type of packaging: packed in cardboard, Color of the spring lever: orange

PSPT 2,5/ 4-ST BU - PCB connector

1036975

<https://www.phoenixcontact.com/in/products/1036975>



PCB connector, nominal cross section: 2.5 mm², color: blue, nominal current: 16 A, rated voltage (III/2): 300 V, contact surface: Sn, contact connection type: Socket, number of potentials: 4, number of rows: 1, number of positions: 4, number of connections: 4, product range: PSPT 2,5/..-ST, pitch: 5 mm, connection method: Push-in spring connection, conductor/PCB connection direction: 0 °, locking clip: - Locking clip, locking: without, mounting method: without, type of packaging: packed in cardboard, Color of the spring lever: orange

ICS25-F22S-9005 - Connection plate



1072520

<https://www.phoenixcontact.com/in/products/1072520>

PSPT 2,5/ 4-ST GY - PCB connector

1036976

<https://www.phoenixcontact.com/in/products/1036976>



PCB connector, nominal cross section: 2.5 mm², color: gray, nominal current: 16 A, rated voltage (III/2): 300 V, contact surface: Sn, contact connection type: Socket, number of potentials: 4, number of rows: 1, number of positions: 4, number of connections: 4, product range: PSPT 2,5/..-ST, pitch: 5 mm, connection method: Push-in spring connection, conductor/PCB connection direction: 0 °, locking clip: - Locking clip, locking: without, mounting method: without, type of packaging: packed in cardboard, Color of the spring lever: orange

PSPT 2,5/ 4-ST GYBN - PCB connector

1086730

<https://www.phoenixcontact.com/in/products/1086730>



PCB connector, nominal cross section: 2.5 mm², color: grey brown, nominal current: 16 A, rated voltage (III/2): 300 V, contact surface: Sn, contact connection type: Socket, number of rows: 1, number of positions: 4, pitch: 5 mm, connection method: Push-in spring connection, conductor/PCB connection direction: 0 °, locking clip: - Locking clip, locking: without, mounting method: without

ICS25-F22S-9005 - Connection plate



1072520

<https://www.phoenixcontact.com/in/products/1072520>

PSPT 2,5/ 4-ST KMGY - PCB connector

2202344

<https://www.phoenixcontact.com/in/products/2202344>

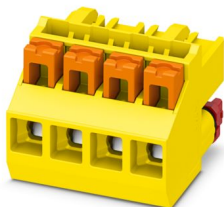


PCB connector, nominal cross section: 2.5 mm², color: light gray, nominal current: 16 A, rated voltage (III/2): 300 V, contact surface: Sn, contact connection type: Socket, number of potentials: 4, number of rows: 1, number of positions: 4, number of connections: 4, product range: PSPT 2,5/...-ST, pitch: 5 mm, connection method: Push-in spring connection, conductor/PCB connection direction: 0 °, locking clip: - Locking clip, locking: without, mounting method: without, type of packaging: packed in cardboard, Color of the spring lever: orange

ICC25-PPC2,5/4-5,0-AA-1018 - PCB connector

1360576

<https://www.phoenixcontact.com/in/products/1360576>



PCB connector, nominal cross section: 2.5 mm², color: yellow, nominal current: 16 A, rated voltage (III/2): 320 V, contact surface: Sn, contact connection type: Socket, number of potentials: 4, number of rows: 1, number of positions: 4, number of connections: 4, product range: ICC...-PPC2,5/...-5,0, pitch: 5 mm, connection method: Push-in spring connection, conductor/PCB connection direction: 0 °, locking clip: - Locking clip, plug-in system: ICC 2,5, locking: without, mounting method: without, type of packaging: packed in cardboard, Color of the spring lever: orange

ICS25-F22S-9005 - Connection plate

1072520

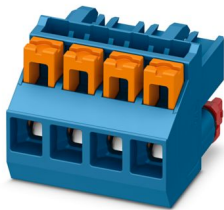
<https://www.phoenixcontact.com/in/products/1072520>



ICC25-PPC2,5/4-5,0-AA-5015 - PCB connector

1272011

<https://www.phoenixcontact.com/in/products/1272011>

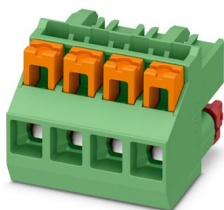


PCB connector, nominal cross section: 2.5 mm², color: blue, nominal current: 16 A, rated voltage (III/2): 320 V, contact surface: Sn, contact connection type: Socket, number of potentials: 4, number of rows: 1, number of positions: 4, number of connections: 4, product range: ICC...-PPC2,5/...-5,0, pitch: 5 mm, connection method: Push-in spring connection, conductor/PCB connection direction: 0 °, locking clip: - Locking clip, plug-in system: ICC 2,5, locking: without, mounting method: without, type of packaging: packed in cardboard, Color of the spring lever: orange

ICC25-PPC2,5/4-5,0-AA-6021 - PCB connector

1475114

<https://www.phoenixcontact.com/in/products/1475114>



PCB connector, nominal cross section: 2.5 mm², color: green, nominal current: 16 A, rated voltage (III/2): 320 V, contact surface: Sn, contact connection type: Socket, number of potentials: 4, number of rows: 1, number of positions: 4, number of connections: 4, product range: ICC...-PPC2,5/...-5,0, pitch: 5 mm, connection method: Push-in spring connection, conductor/PCB connection direction: 0 °, locking clip: - Locking clip, plug-in system: ICC 2,5, locking: without, mounting method: without, type of packaging: packed in cardboard, Color of the spring lever: orange

ICS25-F22S-9005 - Connection plate

1072520

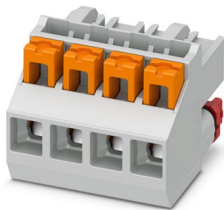
<https://www.phoenixcontact.com/in/products/1072520>



ICC25-PPC2,5/4-5,0-AA-7035 - PCB connector

1084034

<https://www.phoenixcontact.com/in/products/1084034>



PCB connector, nominal cross section: 2.5 mm², color: light gray, nominal current: 16 A, rated voltage (III/2): 320 V, contact surface: Sn, contact connection type: Socket, number of potentials: 4, number of rows: 1, number of positions: 4, number of connections: 4, product range: ICC...-PPC2,5/...-5,0, pitch: 5 mm, connection method: Push-in spring connection, conductor/PCB connection direction: 0 °, locking clip: - Locking clip, plug-in system: ICC 2,5, locking: without, mounting method: without, type of packaging: packed in cardboard, Color of the spring lever: orange

ICC25-PPC2,5/4-5,0-AA-9005 - PCB connector

1227025

<https://www.phoenixcontact.com/in/products/1227025>



PCB connector, nominal cross section: 2.5 mm², color: black, nominal current: 16 A, rated voltage (III/2): 320 V, contact surface: Sn, contact connection type: Socket, number of potentials: 4, number of rows: 1, number of positions: 4, number of connections: 4, product range: ICC...-PPC2,5/...-5,0, pitch: 5 mm, connection method: Push-in spring connection, conductor/PCB connection direction: 0 °, locking clip: - Locking clip, plug-in system: ICC 2,5, locking: without, mounting method: without, type of packaging: packed in cardboard, Color of the spring lever: orange

ICS25-F22S-9005 - Connection plate



1072520

<https://www.phoenixcontact.com/in/products/1072520>

ICC25-PPC1,5/5-3,5-AA-1018 - PCB connector

1360577

<https://www.phoenixcontact.com/in/products/1360577>



PCB connector, nominal cross section: 1.5 mm², color: yellow, nominal current: 8 A, rated voltage (III/2): 150 V, contact surface: Sn, contact connection type: Socket, number of potentials: 5, number of rows: 1, number of positions: 5, number of connections: 5, product range: ICC...-PPC1,5/...-3,5, pitch: 3.5 mm, connection method: Push-in spring connection, conductor/PCB connection direction: 0 °, locking clip: - Locking clip, plug-in system: ICC 1,5, locking: without, mounting method: without, type of packaging: packed in cardboard, Color of the spring lever: orange

ICC25-PPC1,5/5-3,5-AA-5015 - PCB connector

1522851

<https://www.phoenixcontact.com/in/products/1522851>



PCB connector, nominal cross section: 1.5 mm², color: blue, nominal current: 8 A, rated voltage (III/2): 150 V, contact surface: Sn, contact connection type: Socket, number of potentials: 5, number of rows: 1, number of positions: 5, number of connections: 5, product range: ICC...-PPC1,5/...-3,5, pitch: 3.5 mm, connection method: Push-in spring connection, conductor/PCB connection direction: 0 °, locking clip: - Locking clip, plug-in system: ICC 1,5, locking: without, mounting method: without, type of packaging: packed in cardboard, Color of the spring lever: orange

ICS25-F22S-9005 - Connection plate



1072520

<https://www.phoenixcontact.com/in/products/1072520>

ICC25-PPC1,5/5-3,5-AA-7035 - PCB connector

1102108

<https://www.phoenixcontact.com/in/products/1102108>



PCB connector, nominal cross section: 1.5 mm², color: light gray, nominal current: 8 A, rated voltage (III/2): 150 V, contact surface: Sn, contact connection type: Socket, number of potentials: 5, number of rows: 1, number of positions: 5, number of connections: 5, product range: ICC...-PPC1,5/...-3,5, pitch: 3.5 mm, connection method: Push-in spring connection, conductor/PCB connection direction: 0 °, locking clip: - Locking clip, plug-in system: ICC 1,5, locking: without, mounting method: without, type of packaging: packed in cardboard, Color of the spring lever: orange

ICC25-PPC1,5/5-3,5-AA-BK - PCB connector

1561123

<https://www.phoenixcontact.com/in/products/1561123>



PCB connector, nominal cross section: 1.5 mm², color: black, nominal current: 8 A, rated voltage (III/2): 150 V, contact surface: Sn, contact connection type: Socket, number of potentials: 5, number of rows: 1, number of positions: 5, number of connections: 5, product range: ICC...-PPC1,5/...-3,5, pitch: 3.5 mm, connection method: Push-in spring connection, conductor/PCB connection direction: 0 °, locking clip: - Locking clip, plug-in system: ICC 1,5, locking: without, mounting method: without, type of packaging: packed in cardboard, Color of the spring lever: orange

ICS25-F22S-9005 - Connection plate



1072520

<https://www.phoenixcontact.com/in/products/1072520>

MSTBT 2,5 HC/ 4-STP BU - PCB connector

1009166

<https://www.phoenixcontact.com/in/products/1009166>



PCB connector, nominal cross section: 2.5 mm², color: blue, nominal current: 16 A (see derating curve), rated voltage (III/2): 320 V, contact surface: Sn, contact connection type: Socket, number of potentials: 4, number of rows: 1, number of positions: 4, number of connections: 4, product range: MSTBT 2,5 HC/...-STP, pitch: 5 mm, connection method: Screw connection with tension sleeve, conductor/PCB connection direction: 0 °, locking clip: - Locking clip, plug-in system: COMBICON MSTB 2,5 HC, locking: without, mounting method: without, type of packaging: packed in cardboard

MSTBT 2,5 HC/ 4-STP GN - PCB connector

1206561

<https://www.phoenixcontact.com/in/products/1206561>



PCB connector, nominal cross section: 2.5 mm², color: green, nominal current: 16 A (see derating curve), rated voltage (III/2): 320 V, contact surface: Sn, contact connection type: Socket, number of potentials: 4, number of rows: 1, number of positions: 4, number of connections: 4, product range: MSTBT 2,5 HC/...-STP, pitch: 5 mm, connection method: Screw connection with tension sleeve, conductor/PCB connection direction: 0 °, locking clip: - Locking clip, plug-in system: COMBICON MSTB 2,5 HC, locking: without, mounting method: without, type of packaging: packed in cardboard

ICS25-F22S-9005 - Connection plate



1072520

<https://www.phoenixcontact.com/in/products/1072520>

MSTBT 2,5 HC/ 4-STP YE - PCB connector

1511787

<https://www.phoenixcontact.com/in/products/1511787>



PCB connector, nominal cross section: 2.5 mm², color: yellow, nominal current: 16 A (see derating curve), rated voltage (III/2): 320 V, contact surface: Sn, contact connection type: Socket, number of potentials: 4, number of rows: 1, number of positions: 4, number of connections: 4, product range: MSTBT 2,5 HC/...-STP, pitch: 5 mm, connection method: Screw connection with tension sleeve, conductor/PCB connection direction: 0 °, locking clip: - Locking clip, plug-in system: COMBICON MSTB 2,5 HC, locking: without, mounting method: without, type of packaging: packed in cardboard

MSTBT 2,5 HC/ 4-STP 7042 - PCB connector

1546540

<https://www.phoenixcontact.com/in/products/1546540>



PCB connector, nominal cross section: 2.5 mm², color: gray, nominal current: 16 A (see derating curve), rated voltage (III/2): 320 V, contact surface: Sn, contact connection type: Socket, number of potentials: 4, number of rows: 1, number of positions: 4, number of connections: 4, product range: MSTBT 2,5 HC/...-STP, pitch: 5 mm, connection method: Screw connection with tension sleeve, conductor/PCB connection direction: 0 °, locking clip: - Locking clip, plug-in system: COMBICON MSTB 2,5 HC, locking: without, mounting method: without, type of packaging: packed in cardboard

ICS25-F22S-9005 - Connection plate



1072520

<https://www.phoenixcontact.com/in/products/1072520>

MSTBT 2,5 HC/ 4-STP GY7035 - PCB connector

2200332

<https://www.phoenixcontact.com/in/products/2200332>



PCB connector, nominal cross section: 2.5 mm², color: light gray, nominal current: 16 A (see derating curve), rated voltage (III/2): 320 V, contact surface: Sn, contact connection type: Socket, number of potentials: 4, number of rows: 1, number of positions: 4, number of connections: 4, product range: MSTBT 2,5 HC/...-STP, pitch: 5 mm, connection method: Screw connection with tension sleeve, conductor/PCB connection direction: 0 °, locking clip: - Locking clip, plug-in system: COMBICON MSTB 2,5 HC, locking: without, mounting method: without, type of packaging: packed in cardboard

MSTBT 2,5 HC/ 4-STP BK - PCB connector

2200482

<https://www.phoenixcontact.com/in/products/2200482>



PCB connector, nominal cross section: 2.5 mm², color: black, nominal current: 16 A (see derating curve), rated voltage (III/2): 320 V, contact surface: Sn, contact connection type: Socket, number of potentials: 4, number of rows: 1, number of positions: 4, number of connections: 4, product range: MSTBT 2,5 HC/...-STP, pitch: 5 mm, connection method: Screw connection with tension sleeve, conductor/PCB connection direction: 0 °, locking clip: - Locking clip, plug-in system: COMBICON MSTB 2,5 HC, locking: without, mounting method: without, type of packaging: packed in cardboard

ICS25-F22S-9005 - Connection plate



1072520

<https://www.phoenixcontact.com/in/products/1072520>

MSTBT 2,5 HC/ 4-STP BUGY - PCB connector

2201085

<https://www.phoenixcontact.com/in/products/2201085>



PCB connector, nominal cross section: 2.5 mm², color: blue, nominal current: 16 A (see derating curve), rated voltage (III/2): 320 V, contact surface: Sn, contact connection type: Socket, number of potentials: 4, number of rows: 1, number of positions: 4, number of connections: 4, product range: MSTBT 2,5 HC/...-STP, pitch: 5 mm, connection method: Screw connection with tension sleeve, conductor/PCB connection direction: 0 °, locking clip: - Locking clip, plug-in system: COMBICON MSTB 2,5 HC, locking: without, mounting method: without, type of packaging: packed in cardboard

ICC25-PSC2,5/4-5,0-AA-7035 - PCB connector

1084027

<https://www.phoenixcontact.com/in/products/1084027>



PCB connector, nominal cross section: 2.5 mm², color: light gray, nominal current: 16 A, rated voltage (III/2): 320 V, contact surface: Sn, contact connection type: Socket, number of potentials: 4, number of rows: 1, number of positions: 4, number of connections: 4, product range: ICC...-PSC2,5/...-5,0, pitch: 5 mm, connection method: Screw connection with tension sleeve, conductor/PCB connection direction: 0 °, locking clip: - Locking clip, plug-in system: ICC 2,5, locking: without, mounting method: without, type of packaging: packed in cardboard

ICS25-F22S-9005 - Connection plate



1072520

<https://www.phoenixcontact.com/in/products/1072520>

ICC25-PSC2,5/4-5,0-AA-1018 - PCB connector

1367873

<https://www.phoenixcontact.com/in/products/1367873>



PCB connector, nominal cross section: 2.5 mm², color: yellow, nominal current: 16 A, rated voltage (III/2): 320 V, contact surface: Sn, contact connection type: Socket, number of potentials: 4, number of rows: 1, number of positions: 4, number of connections: 4, product range: ICC...-PSC2,5/...-5,0, pitch: 5 mm, connection method: Screw connection with tension sleeve, conductor/PCB connection direction: 0 °, locking clip: - Locking clip, plug-in system: ICC 2,5, locking: without, mounting method: without, type of packaging: packed in cardboard

ICC25-PSC2,5/4-5,0-AA-9005 - PCB connector

1428287

<https://www.phoenixcontact.com/in/products/1428287>



PCB connector, nominal cross section: 2.5 mm², color: black, nominal current: 16 A, rated voltage (III/2): 320 V, contact surface: Sn, contact connection type: Socket, number of potentials: 4, number of rows: 1, number of positions: 4, number of connections: 4, product range: ICC...-PSC2,5/...-5,0, pitch: 5 mm, connection method: Screw connection with tension sleeve, conductor/PCB connection direction: 0 °, locking clip: - Locking clip, plug-in system: ICC 2,5, locking: without, mounting method: without, type of packaging: packed in cardboard

ICS25-F22S-9005 - Connection plate



1072520

<https://www.phoenixcontact.com/in/products/1072520>

ICC25-PSC1,5/5-3,5-AA-7035 - PCB connector

1084024

<https://www.phoenixcontact.com/in/products/1084024>



PCB connector, nominal cross section: 1.5 mm², color: light gray, nominal current: 8 A, rated voltage (III/2): 150 V, contact surface: Sn, contact connection type: Socket, number of potentials: 5, number of rows: 1, number of positions: 5, number of connections: 5, product range: ICC...-PSC1,5/...-3,5, pitch: 3.5 mm, connection method: Screw connection with tension sleeve, screw head form: L Slotted, conductor/PCB connection direction: 0 °, locking clip: - Locking clip, plug-in system: ICC 1,5, locking: without, mounting method: without, type of packaging: packed in cardboard

ICC25-PSC1,5/5-3,5-AA-BK - PCB connector

1560994

<https://www.phoenixcontact.com/in/products/1560994>



PCB connector, nominal cross section: 1.5 mm², color: black, nominal current: 8 A, rated voltage (III/2): 150 V, contact surface: Sn, contact connection type: Socket, number of potentials: 5, number of rows: 1, number of positions: 5, number of connections: 5, product range: ICC...-PSC1,5/...-3,5, pitch: 3.5 mm, connection method: Screw connection with tension sleeve, screw head form: L Slotted, conductor/PCB connection direction: 0 °, locking clip: - Locking clip, plug-in system: ICC 1,5, locking: without, mounting method: without, type of packaging: packed in cardboard

ICS25-F22S-9005 - Connection plate

1072520

<https://www.phoenixcontact.com/in/products/1072520>



ICE25-F45H-A1 - Heatsink

1328703

<https://www.phoenixcontact.com/in/products/1328703>



Heatsink for housing series: ICS, type: Heatsink fillers, material: Aluminum, anodized, product range: ICS25, width: 44.9 mm, height: 25 mm, Individual milling possible.

ICE25-F22H-A1 - Heatsink

1328704

<https://www.phoenixcontact.com/in/products/1328704>



Heatsink for housing series: ICS, type: Heatsink fillers, material: Aluminum, anodized, product range: ICS25, width: 22.4 mm, height: 25 mm, Individual milling possible.

ICS25-F22S-9005 - Connection plate



1072520

<https://www.phoenixcontact.com/in/products/1072520>

ICE25-R100X45-A1 - Heatsink

1328714

<https://www.phoenixcontact.com/in/products/1328714>



Heatsink for housing series: ICS, material: Aluminum, anodized, product range: ICS25-..100X.., width: 44.9 mm, height: 25 mm, Individual milling possible.

ICE25-R100X22-A1 - Heatsink

1328715

<https://www.phoenixcontact.com/in/products/1328715>



Heatsink for housing series: ICS, material: Aluminum, anodized, product range: ICS25-..100X.., width: 22.4 mm, height: 25 mm, Individual milling possible.

ICS25-F22S-9005 - Connection plate



1072520

<https://www.phoenixcontact.com/in/products/1072520>

HS LC-H-D3/ R1XC1 - Fiber optic

2202313

<https://www.phoenixcontact.com/in/products/2202313>



Multiple light guides, passive, rigid, Cylinder head, emission surface: planar, number of displays: 1, (1 row, 1 column), pitch: 5.08 mm, ESD protection: <10 kV, can be used for the ME, ME-MAX, ME-IO, ME PLC, and EH housing ranges (housing must be processed)

HS LC-H-5X2/ R1XC1 - Fiber optic

2202314

<https://www.phoenixcontact.com/in/products/2202314>



Single light guide, passive, rigid, Rectangular, straight, emission surface: planar, number of displays: 1, (1 row, 1 column), ESD protection: <10 kV, can be used for the ME, ME-MAX, ME-IO, ME PLC, and EH housing ranges (housing must be processed)

ICS25-F22S-9005 - Connection plate



1072520

<https://www.phoenixcontact.com/in/products/1072520>

HS LC-H-D3/ R2XC1-5,08 - Fiber optic

2202315

<https://www.phoenixcontact.com/in/products/2202315>

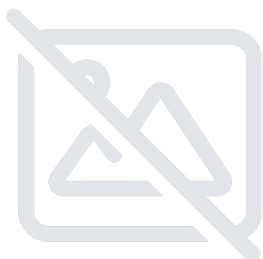


Multiple light guides, passive, rigid, Cylinder head, emission surface: planar, number of displays: 2, (2 rows, 1 column), pitch: 5.08 mm, ESD protection: <5 kV, can be used for the ME, ME-MAX, ME-IO, ME PLC, and EH housing ranges (housing must be processed)

HS LC-H-D2/ R2XC1-2,54 - Fiber optic

2202316

<https://www.phoenixcontact.com/in/products/2202316>



Multiple light guides with glare protection, passive, rigid, Raised head, emission surface: spherical, number of displays: 2, (2 rows, 1 column), pitch: 2.54 mm, ESD protection: <8 kV, can be used for the ME, ME-MAX, ME-IO, ME PLC, and EH housing ranges (housing must be processed)

ICS25-F22S-9005 - Connection plate



1072520

<https://www.phoenixcontact.com/in/products/1072520>

HS LC-H-D2/ R2XC2-2,54 - Fiber optic

2202317

<https://www.phoenixcontact.com/in/products/2202317>

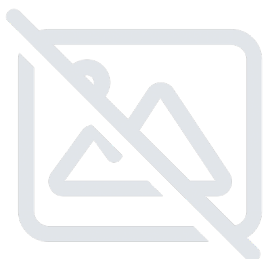


Multiple light guides with glare protection, passive, rigid, Raised head, emission surface: spherical, number of displays: 4, (2 rows, 2 columns), pitch: 2.54 mm, ESD protection: <8 kV, can be used for the ME, ME-MAX, ME-IO, ME PLC, and EH housing ranges (housing must be processed)

HS LC-H-D2/ R2XC4-2,54 - Fiber optic

2202531

<https://www.phoenixcontact.com/in/products/2202531>



Multiple light guides with glare protection, passive, rigid, Raised head, emission surface: spherical, number of displays: 8, (2 rows, 4 columns), pitch: 2.54 mm, ESD protection: <8 kV, can be used for the ME, ME-MAX, ME-IO, ME PLC, and EH housing ranges (housing must be processed)

ICS25-F22S-9005 - Connection plate



1072520

<https://www.phoenixcontact.com/in/products/1072520>

HS LC-H-D2/ R2XC5-2,54 - Fiber optic

2202318

<https://www.phoenixcontact.com/in/products/2202318>

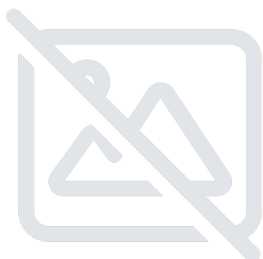


Multiple light guides with glare protection, passive, rigid, Raised head, emission surface: spherical, number of displays: 10, (2 rows, 5 columns), pitch: 2.54 mm, ESD protection: <8 kV, can be used for the ME, ME-MAX, ME-IO, ME PLC, and EH housing ranges (housing must be processed)

HS LC-H-D2/ R2XC10-2,54 - Fiber optic

2202319

<https://www.phoenixcontact.com/in/products/2202319>



Multiple light guides with glare protection, passive, rigid, Raised head, emission surface: spherical, number of displays: 20, (2 rows, 10 columns), pitch: 2.54 mm, ESD protection: <8 kV, can be used for the ME, ME-MAX, ME-IO, ME PLC, and EH housing ranges (housing must be processed)

ICS25-F22S-9005 - Connection plate



1072520

<https://www.phoenixcontact.com/in/products/1072520>

HS LC-H-D2/ R3XC1-2,54 - Fiber optic

1393207

<https://www.phoenixcontact.com/in/products/1393207>

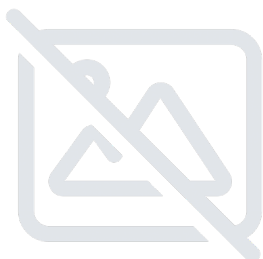


Multiple light guides with glare protection, passive, rigid, Raised head, emission surface: spherical, number of displays: 3, (3 rows, 1 column), pitch: 2.54 mm, ESD protection: <8 kV, can be used for the ME, ME-MAX, ME-IO, ME PLC, and EH housing ranges (housing must be processed)

HS LC-H-D2/ R3XC10-2,54 - Fiber optic

1104374

<https://www.phoenixcontact.com/in/products/1104374>



Multiple light guides with glare protection, passive, rigid, Raised head, emission surface: spherical, number of displays: 30, (3 rows, 10 columns), pitch: 2.54 mm, ESD protection: <8 kV, can be used for the ME, ME-MAX, ME-IO, ME PLC, and EH housing ranges (housing must be processed)

ICS25-F22S-9005 - Connection plate



1072520

<https://www.phoenixcontact.com/in/products/1072520>

HS LC-H-D2/ R4XC4-2,54 - Fiber optic

2202532

<https://www.phoenixcontact.com/in/products/2202532>



Multiple light guides with glare protection, passive, rigid, Raised head, emission surface: spherical, number of displays: 16, (4 rows, 4 columns), pitch: 2.54 mm, ESD protection: <8 kV, can be used for the ME, ME-MAX, ME-IO, ME PLC, and EH housing ranges (housing must be processed)

HS LC-H-D2/ R4XC2-2,54 - Fiber optic

2202320

<https://www.phoenixcontact.com/in/products/2202320>



Multiple light guides with glare protection, passive, rigid, Raised head, emission surface: spherical, number of displays: 8, (4 rows, 2 columns), pitch: 2.54 mm, ESD protection: <8 kV, can be used for the ME, ME-MAX, ME-IO, ME PLC, and EH housing ranges (housing must be processed)

ICS25-F22S-9005 - Connection plate



1072520

<https://www.phoenixcontact.com/in/products/1072520>

HS LC-H-D2/ R4XC5-2,54 - Fiber optic

2202321

<https://www.phoenixcontact.com/in/products/2202321>



Multiple light guides with glare protection, passive, rigid, Raised head, emission surface: spherical, number of displays: 20, (4 rows, 5 columns), pitch: 2.54 mm, ESD protection: <8 kV, can be used for the ME, ME-MAX, ME-IO, ME PLC, and EH housing ranges (housing must be processed)

HS LC-H-D2/ R4XC9-2,54 - Fiber optic

2202322

<https://www.phoenixcontact.com/in/products/2202322>



Multiple light guides with glare protection, passive, rigid, Raised head, emission surface: spherical, number of displays: 36, (4 rows, 9 columns), pitch: 2.54 mm, ESD protection: <8 kV, can be used for the ME, ME-MAX, ME-IO, ME PLC, and EH housing ranges (housing must be processed)

ICS25-F22S-9005 - Connection plate



1072520

<https://www.phoenixcontact.com/in/products/1072520>

HS LC-H-D2/ R4XC10-2,54 - Fiber optic

2202323

<https://www.phoenixcontact.com/in/products/2202323>



Multiple light guides with glare protection, passive, rigid, Raised head, emission surface: spherical, number of displays: 40, (4 rows, 10 columns), pitch: 2.54 mm, ESD protection: <8 kV, can be used for the ME, ME-MAX, ME-IO, ME PLC, and EH housing ranges (housing must be processed)

HS LC-H-D2C/ R2XC1-2,54 - Fiber optic

1036658

<https://www.phoenixcontact.com/in/products/1036658>



Multiple light guides with glare protection, passive, rigid, Raised head, conical, emission surface: spherical, number of displays: 2, (2 rows, 1 column), pitch: 2.54 mm, ESD protection: <8 kV, can be used for the ME, ME-MAX, ME-IO, ME PLC, and EH housing ranges (housing must be processed)

ICS25-F22S-9005 - Connection plate



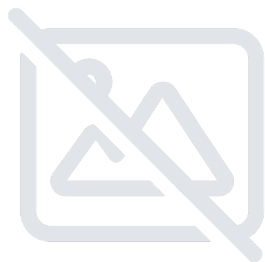
1072520

<https://www.phoenixcontact.com/in/products/1072520>

HS LC-H-D2C/ R2XC2-2,54 - Fiber optic

1043044

<https://www.phoenixcontact.com/in/products/1043044>



Multiple light guides with glare protection, passive, rigid, Raised head, conical, emission surface: spherical, number of displays: 4, (2 rows, 2 columns), pitch: 2.54 mm, ESD protection: <8 kV, can be used for the ME, ME-MAX, ME-IO, ME PLC, and EH housing ranges (housing must be processed)

HS LC-H-D2C/ R2XC4-2,54 - Fiber optic

1036724

<https://www.phoenixcontact.com/in/products/1036724>



Multiple light guides with glare protection, passive, rigid, Raised head, conical, emission surface: spherical, number of displays: 8, (2 rows, 4 columns), pitch: 2.54 mm, ESD protection: <8 kV, can be used for the ME, ME-MAX, ME-IO, ME PLC, and EH housing ranges (housing must be processed)

ICS25-F22S-9005 - Connection plate



1072520

<https://www.phoenixcontact.com/in/products/1072520>

HS LC-H-D2C/ R2XC5-2,54 - Fiber optic

1071310

<https://www.phoenixcontact.com/in/products/1071310>

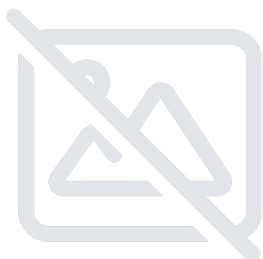


Multiple light guides with glare protection, passive, rigid, Raised head, conical, emission surface: spherical, number of displays: 10, (2 rows, 5 columns), pitch: 2.54 mm, ESD protection: <8 kV, can be used for the ME, ME-MAX, ME-IO, ME PLC, and EH housing ranges (housing must be processed)

HS LC-H-D2C/ R2XC10-2,54 - Fiber optic

1071314

<https://www.phoenixcontact.com/in/products/1071314>



Multiple light guides with glare protection, passive, rigid, Raised head, conical, emission surface: spherical, number of displays: 20, (2 rows, 10 columns), pitch: 2.54 mm, ESD protection: <8 kV, can be used for the ME, ME-MAX, ME-IO, ME PLC, and EH housing ranges (housing must be processed)

ICS25-F22S-9005 - Connection plate



1072520

<https://www.phoenixcontact.com/in/products/1072520>

HS LC-H-D2C/ R4XC2-2,54 - Fiber optic

1071316

<https://www.phoenixcontact.com/in/products/1071316>

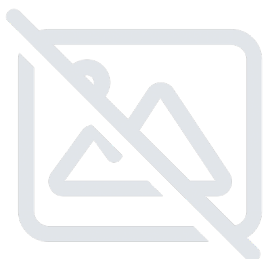


Multiple light guides with glare protection, passive, rigid, Raised head, conical, emission surface: spherical, number of displays: 8, (4 rows, 2 columns), pitch: 2.54 mm, ESD protection: <8 kV, can be used for the ME, ME-MAX, ME-IO, ME PLC, and EH housing ranges (housing must be processed)

HS LC-H-D2C/ R4XC4-2,54 - Fiber optic

1036727

<https://www.phoenixcontact.com/in/products/1036727>



Multiple light guides with glare protection, passive, rigid, Raised head, conical, emission surface: spherical, number of displays: 16, (4 rows, 4 columns), pitch: 2.54 mm, ESD protection: <8 kV, can be used for the ME, ME-MAX, ME-IO, ME PLC, and EH housing ranges (housing must be processed)

ICS25-F22S-9005 - Connection plate



1072520

<https://www.phoenixcontact.com/in/products/1072520>

HS LC-H-D2C/ R4XC5-2,54 - Fiber optic

1071318

<https://www.phoenixcontact.com/in/products/1071318>

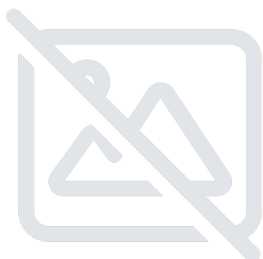


Multiple light guides with glare protection, passive, rigid, Raised head, conical, emission surface: spherical, number of displays: 20, (4 rows, 5 columns), pitch: 2.54 mm, ESD protection: <8 kV, can be used for the ME, ME-MAX, ME-IO, ME PLC, and EH housing ranges (housing must be processed)

HS LC-H-D2C/ R4XC9-2,54 - Fiber optic

1071321

<https://www.phoenixcontact.com/in/products/1071321>



Multiple light guides with glare protection, passive, rigid, Raised head, conical, emission surface: spherical, number of displays: 36, (4 rows, 9 columns), pitch: 2.54 mm, ESD protection: <8 kV, can be used for the ME, ME-MAX, ME-IO, ME PLC, and EH housing ranges (housing must be processed)

ICS25-F22S-9005 - Connection plate



1072520

<https://www.phoenixcontact.com/in/products/1072520>

HS LC-H-D2C/ R4XC10-2,54 - Fiber optic

1071329

<https://www.phoenixcontact.com/in/products/1071329>

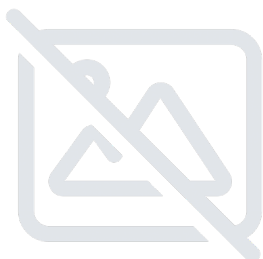


Multiple light guides with glare protection, passive, rigid, Raised head, conical, emission surface: spherical, number of displays: 40, (4 rows, 10 columns), pitch: 2.54 mm, ESD protection: <8 kV, can be used for the ME, ME-MAX, ME-IO, ME PLC, and EH housing ranges (housing must be processed)

HS LC-H-D3PL/ R2XC2-5,08 - Fiber optic

1474395

<https://www.phoenixcontact.com/in/products/1474395>



Multiple light guides with glare protection, passive, rigid, Cylinder head, emission surface: planar, number of displays: 4, (2 rows, 2 columns), pitch: 5.08 mm, ESD protection: <8 kV, can be used for the ME, ME-MAX, ME-IO, ME PLC, and EH housing ranges (housing must be processed)

ICS25-F22S-9005 - Connection plate



1072520

<https://www.phoenixcontact.com/in/products/1072520>

HS LC-H-D3PL/ R2XC3-5,08 - Fiber optic

1474396

<https://www.phoenixcontact.com/in/products/1474396>



Multiple light guides with glare protection, passive, rigid, Cylinder head, emission surface: planar, number of displays: 6, (2 rows, 3 columns), pitch: 5.08 mm, ESD protection: <8 kV, can be used for the ME, ME-MAX, ME-IO, ME PLC, and EH housing ranges (housing must be processed)

HS LC-H-D3PL/ R2XC4-5,08 - Fiber optic

1474397

<https://www.phoenixcontact.com/in/products/1474397>



Multiple light guides with glare protection, passive, rigid, Cylinder head, emission surface: planar, number of displays: 8, (2 rows, 4 columns), pitch: 5.08 mm, ESD protection: <8 kV, can be used for the ME, ME-MAX, ME-IO, ME PLC, and EH housing ranges (housing must be processed)

ICS25-F22S-9005 - Connection plate

1072520

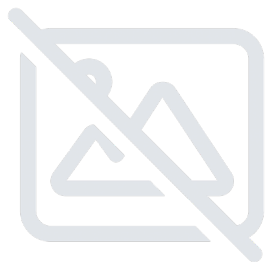
<https://www.phoenixcontact.com/in/products/1072520>



HS LC-H-D3PL/ R2XC5-5,08 - Fiber optic

1474399

<https://www.phoenixcontact.com/in/products/1474399>



Multiple light guides with glare protection, passive, rigid, Cylinder head, emission surface: planar, number of displays: 10, (2 rows, 5 columns), pitch: 5.08 mm, ESD protection: <8 kV, can be used for the ME, ME-MAX, ME-IO, ME PLC, and EH housing ranges (housing must be processed)

FP 0,8/ 12-FV-SH 4,85 - SMD female connector shielded

1043710

<https://www.phoenixcontact.com/in/products/1043710>



Shielded SMD female connector, nominal current: 1.7 A, test voltage: 500 V AC, number of positions: 12, pitch: 0.8 mm, color: black, contact surface: Au, contact connection type: Socket, mounting: SMD soldering

ICS25-F22S-9005 - Connection plate



1072520

<https://www.phoenixcontact.com/in/products/1072520>

FP 0,8/ 20-FV-SH 4,85 - SMD female connector shielded

1053612

<https://www.phoenixcontact.com/in/products/1053612>



Shielded SMD female connector, nominal current: 1.7 A, test voltage: 500 V AC, number of positions: 20, pitch: 0.8 mm, color: black, contact surface: Au, contact connection type: Socket, mounting: SMD soldering

FP 0,8/ 32-FV-SH 4,85 - SMD female connector shielded

1043711

<https://www.phoenixcontact.com/in/products/1043711>



Shielded SMD female connector, nominal current: 1.7 A, test voltage: 500 V AC, number of positions: 32, pitch: 0.8 mm, color: black, contact surface: Au, contact connection type: Socket, mounting: SMD soldering

ICS25-F22S-9005 - Connection plate



1072520

<https://www.phoenixcontact.com/in/products/1072520>

FP 0,8/ 52-FV-SH 4,85 - SMD female connector shielded

1043713

<https://www.phoenixcontact.com/in/products/1043713>



Shielded SMD female connector, nominal current: 1.7 A, test voltage: 500 V AC, number of positions: 52, pitch: 0.8 mm, color: black, contact surface: Au, contact connection type: Socket, mounting: SMD soldering

FP 0,8/ 80-FV-SH 4,85 - SMD female connector shielded

1043714

<https://www.phoenixcontact.com/in/products/1043714>



Shielded SMD female connector, nominal current: 1.7 A, test voltage: 500 V AC, number of positions: 80, pitch: 0.8 mm, color: black, contact surface: Au, contact connection type: Socket, mounting: SMD soldering

ICS25-F22S-9005 - Connection plate



1072520

<https://www.phoenixcontact.com/in/products/1072520>

FP 0,8/ 12-MV-SH 8,65 - SMD male connector, shielded

1154119

<https://www.phoenixcontact.com/in/products/1154119>

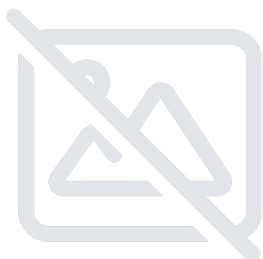


shielded SMD male connector, nominal current: 1.7 A, test voltage: 500 V AC, number of positions: 12, pitch: 0.8 mm, color: black, contact surface: Au, contact connection type: Pin, mounting: SMD soldering

FP 0,8/ 20-MV-SH 8,65 - SMD male connector, shielded

1154120

<https://www.phoenixcontact.com/in/products/1154120>



shielded SMD male connector, nominal current: 1.7 A, test voltage: 500 V AC, number of positions: 20, pitch: 0.8 mm, color: black, contact surface: Au, contact connection type: Pin, mounting: SMD soldering

ICS25-F22S-9005 - Connection plate

1072520

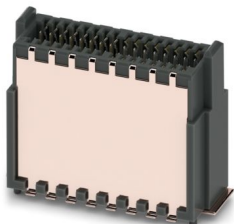
<https://www.phoenixcontact.com/in/products/1072520>



FP 0,8/ 32-MV-SH 8,65 - SMD male connector, shielded

1154121

<https://www.phoenixcontact.com/in/products/1154121>



shielded SMD male connector, nominal current: 1.7 A, test voltage: 500 V AC, number of positions: 32, pitch: 0.8 mm, color: black, contact surface: Au, contact connection type: Pin, mounting: SMD soldering

FP 0,8/ 52-MV-SH 8,65 - SMD male connector, shielded

1154122

<https://www.phoenixcontact.com/in/products/1154122>



shielded SMD male connector, nominal current: 1.7 A, test voltage: 500 V AC, number of positions: 52, pitch: 0.8 mm, color: black, contact surface: Au, contact connection type: Pin, mounting: SMD soldering

ICS25-F22S-9005 - Connection plate

1072520

<https://www.phoenixcontact.com/in/products/1072520>

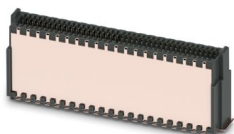


FP 0,8/ 80-MV-SH 8,65 - SMD male connector, shielded

1154123

<https://www.phoenixcontact.com/in/products/1154123>

shielded SMD male connector, nominal current: 1.7 A, test voltage: 500 V AC, number of positions: 80, pitch: 0.8 mm, color: black, contact surface: Au, contact connection type: Pin, mounting: SMD soldering



FP 0,8/ 12-FV 4,85 - SMD female connectors

1061643

<https://www.phoenixcontact.com/in/products/1061643>



SMD female connector, nominal current: 1.7 A, test voltage: 500 V AC, number of positions: 12, pitch: 0.8 mm, color: black, contact surface: Au, contact connection type: Socket, mounting: SMD soldering

ICS25-F22S-9005 - Connection plate



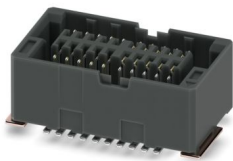
1072520

<https://www.phoenixcontact.com/in/products/1072520>

FP 0,8/ 20-FV 4,85 - SMD female connectors

1061660

<https://www.phoenixcontact.com/in/products/1061660>

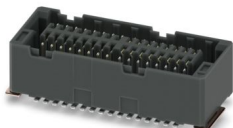


SMD female connector, nominal current: 1.7 A, test voltage: 500 V AC, number of positions: 20, pitch: 0.8 mm, color: black, contact surface: Au, contact connection type: Socket, mounting: SMD soldering

FP 0,8/ 32-FV 4,85 - SMD female connectors

1061662

<https://www.phoenixcontact.com/in/products/1061662>



SMD female connector, nominal current: 1.7 A, test voltage: 500 V AC, number of positions: 32, pitch: 0.8 mm, color: black, contact surface: Au, contact connection type: Socket, mounting: SMD soldering

ICS25-F22S-9005 - Connection plate



1072520

<https://www.phoenixcontact.com/in/products/1072520>

FP 0,8/ 52-FV 4,85 - SMD female connectors

1061666

<https://www.phoenixcontact.com/in/products/1061666>



SMD female connector, nominal current: 1.7 A, test voltage: 500 V AC, number of positions: 52, pitch: 0.8 mm, color: black, contact surface: Au, contact connection type: Socket, mounting: SMD soldering

FP 0,8/ 80-FV 4,85 - SMD female connectors

1061667

<https://www.phoenixcontact.com/in/products/1061667>



SMD female connector, nominal current: 1.7 A, test voltage: 500 V AC, number of positions: 80, pitch: 0.8 mm, color: black, contact surface: Au, contact connection type: Socket, mounting: SMD soldering

ICS25-F22S-9005 - Connection plate



1072520

<https://www.phoenixcontact.com/in/products/1072520>

FP 0,8/ 12-MV 8,65 - SMD male connectors

1154012

<https://www.phoenixcontact.com/in/products/1154012>



SMD male connector, nominal current: 1.7 A, test voltage: 500 V AC, number of positions: 12, pitch: 0.8 mm, color: black, contact surface: Au, contact connection type: Pin, mounting: SMD soldering

FP 0,8/ 20-MV 8,65 - SMD male connectors

1154013

<https://www.phoenixcontact.com/in/products/1154013>



SMD male connector, nominal current: 1.7 A, test voltage: 500 V AC, number of positions: 20, pitch: 0.8 mm, color: black, contact surface: Au, contact connection type: Pin, mounting: SMD soldering

ICS25-F22S-9005 - Connection plate



1072520

<https://www.phoenixcontact.com/in/products/1072520>

FP 0,8/ 32-MV 8,65 - SMD male connectors

1154014

<https://www.phoenixcontact.com/in/products/1154014>



SMD male connector, nominal current: 1.7 A, test voltage: 500 V AC, number of positions: 32, pitch: 0.8 mm, color: black, contact surface: Au, contact connection type: Pin, mounting: SMD soldering

FP 0,8/ 52-MV 8,65 - SMD male connectors

1154015

<https://www.phoenixcontact.com/in/products/1154015>



SMD male connector, nominal current: 1.7 A, test voltage: 500 V AC, number of positions: 52, pitch: 0.8 mm, color: black, contact surface: Au, contact connection type: Pin, mounting: SMD soldering

ICS25-F22S-9005 - Connection plate

1072520

<https://www.phoenixcontact.com/in/products/1072520>



FP 0,8/ 80-MV 8,65 - SMD male connectors

1154016

<https://www.phoenixcontact.com/in/products/1154016>



SMD male connector, nominal current: 1.7 A, test voltage: 500 V AC, number of positions: 80, pitch: 0.8 mm, color: black, contact surface: Au, contact connection type: Pin, mounting: SMD soldering

Phoenix Contact 2025 © - all rights reserved

<https://www.phoenixcontact.com>

PHOENIX CONTACT (I) Pvt. Ltd.

A-58/2, Okhla Industrial Area, Phase - II, New Delhi-110 020

+91.1275.71420

info@phoenixcontact.co.in