



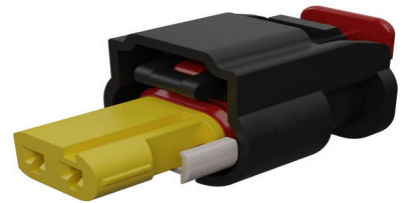
Part Number : [349002101](#)

Product Description : MXP120 Sealed Receptacle, 2 Circuit, Yellow SIR Housing (T3-V2-S2 -125°C on-engine vibration), Key A, Black Insert

Series Number : 34900

Status : Active

Product Category : Connector Housings



Documents & Resources

Drawings

[349002101_sd.pdf](#)

[PK-31301-898-000.pdf](#)

[PK-31301-898-001.pdf](#)

3D Models and Design Files

[STEP AP242](#)

[SOLIDWORKS](#)

[Creo](#)

Specifications

[AS-34900-0001-001.pdf](#)


[AS-34900-0001-CH-001.pdf](#)

[PS-34900-0001-001.pdf](#)

[TS-34900-0002-001.pdf](#)

Product Environment Compliance

Compliance

GADSL/IMDS	Compliant
China RoHS	 per SJ/T 11365-2006
EU ELV	Compliant per 2000/53/EC
Low-Halogen Status	Low-Halogen per IEC 61249-2-21
REACH SVHC	Contains Dodecamethylcyclohexasiloxane; Decamethylcyclopentasiloxane;

	Octamethylcyclotetrasiloxane per D(2025)4165-DC (25 June 2025)
EU RoHS	Compliant per EU 2015/863

Compliance Statements

- EU RoHS
- REACH SVHC
- Low-Halogen

Industry Documents

- IPC 1752A Class C
- IPC 1752A Class D
- Molex Product Compliance Declaration
- IEC-62474
- chemSHERPA (xml)

Substances of Interest

- PFAS

EU RoHS Certificate of Compliance

Additional Product Compliance Information

Part Details

General

Status	Active
Category	Connector Housings
Series	34900
Description	MXP120 Sealed Receptacle, 2 Circuit, Yellow SIR Housing (T3-V2-S2 -125°C on-engine vibration), Key A, Black Insert
Application	Automotive, Safety, Sealed, Wire-to-Wire
Comments	See sales drawing for terminal information.
Product Name	MXP120 Sealed
UPC	889056197571

Physical

Circuits (maximum)	2
Color - Resin	Yellow

Gender	Receptacle
Glow-Wire Capable	No
Keying to Mating Part	Yes
Lock to Mating Part	Yes
Material - Resin	SPS/Nylon
Net Weight	2.430/g
Number of Rows	1
Packaging Type	Bag
Panel Mount	No
Pitch - Mating Interface	4.00mm
Pitch - Termination Interface	4.00mm
Polarization	A
Polarized to Mating Part	Yes
Temperature Range - Operating	-40° to +125°C

Mates With / Use With

Mates with Part(s)

Description	Part Number
MXP120 Sealed Male Blade Connectors	<u>34899</u>

Use with Part(s)

Description	Part Number
MXP120 Backshell, Exit Direction Straight, Flange Size NW 4.5, 2 Circuits	<u>1600912010</u>
MXP120 Cavity Plug, Natural	<u>349961501</u>
MXP120 Cavity Plug Seal, Silicone, Rust Red	<u>349961902</u>
Use With	1.2 LL SWS from Tyco and Kostal

Application Tooling

Global

Description	Part Number
Extraction Toolkit for MXP120 Sealed Connection System	<u>638246300</u>

This document was generated on Aug 04, 2025