



Connectors > PCB Connectors > PCB Headers & Receptacles



PCB Connector Type: **PCB Mount Header**

Connector System: **Board-to-Board**

Number of Positions: **8, 16**

Number of Rows: **2**

Centerline (Pitch): **2.54 mm [ .1 in ]**

## Features

### Product Type Features

PCB Connector Type	PCB Mount Header
Connector System	Board-to-Board
Header Type	Breakaway
Sealable	No
Connector & Contact Terminates To	Printed Circuit Board

### Configuration Features

Stackable	Yes
Number of Positions	8, 16
Number of Rows	2
PCB Mount Orientation	Vertical
Board-to-Board Configuration	Parallel

### Body Features

Primary Product Color	Green
-----------------------	-------

### Contact Features

Mating Square Post Dimension	.64 mm[.025 in]
Contact Shape & Form	Square
Contact Mating Area Length	5 mm[.197 in]
Contact Base Material	Copper Tin
Contact Mating Area Plating Material Thickness	.1 $\mu$ m[3.94 $\mu$ in]

Contact Mating Area Plating Material	Gold (Au)
--------------------------------------	-----------

Contact Type	Pin
--------------	-----

Contact Current Rating (Max)	5 A
------------------------------	-----

### Termination Features

Termination Post & Tail Length	3 mm[.118 in]
--------------------------------	---------------

Square Termination Post & Tail Dimension	.64 mm[.025 in]
--	-----------------

Termination Method to PCB	Through Hole - Solder
---------------------------	-----------------------

### Mechanical Attachment

Connector Mounting Type	Board Mount
-------------------------	-------------

Mating Alignment	Without
------------------	---------

PCB Mount Alignment	Without
---------------------	---------

PCB Mount Retention	Without
---------------------	---------

### Housing Features

Centerline (Pitch)	2.54 mm[.1 in]
--------------------	----------------

Housing Material	PBT GF, PBTP GF
------------------	-----------------

### Dimensions

Row-to-Row Spacing	2.54 mm[.1 in]
--------------------	----------------

Stack Height	27.3 mm[1.074 in]
--------------	-------------------

PCB Thickness (Recommended)	1.4 mm[.055 in]
-----------------------------	-----------------

### Operation/Application

Circuit Application	Signal
---------------------	--------

### Industry Standards

UL Flammability Rating	UL 94V-0
------------------------	----------

### Packaging Features

Packaging Method	Box
------------------	-----

### Product Compliance

[For compliance documentation, visit the product page on TE.com>](#)

EU RoHS Directive 2011/65/EU	Compliant
------------------------------	-----------

EU ELV Directive 2000/53/EC	Compliant
-----------------------------	-----------

China RoHS 2 Directive MIIT Order No 32, 2016	有害物质含量符合标准要求 No Restricted Substance(s) Above Threshold
---	---

EU REACH Regulation (EC) No. 1907/2006

Current ECHA Candidate List: JUNE 2025 (250)

Candidate List Declared Against: JAN 2023 (233)

Does not contain REACH SVHC

Halogen Content

Not Low Halogen - contains Br or Cl > 900 ppm.

Solder Process Capability

Wave solder capable to 265°C

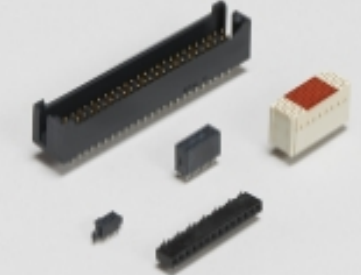
Product Compliance Disclaimer

This information is provided based on reasonable inquiry of our suppliers and represents our current actual knowledge based on the information they provided. This information is subject to change. The part numbers that TE has identified as EU RoHS compliant have a maximum concentration of 0.1% by weight in homogenous materials for lead, hexavalent chromium, mercury, PBB, PBDE, DBP, BBP, DEHP, DIBP, and 0.01% for cadmium, or qualify for an exemption to these limits as defined in the Annexes of Directive 2011/65/EU (RoHS2). Finished electrical and electronic equipment products will be CE marked as required by Directive 2011/65/EU. Components may not be CE marked. Additionally, the part numbers that TE has identified as EU ELV compliant have a maximum concentration of 0.1% by weight in homogenous materials for lead, hexavalent chromium, and mercury, and 0.01% for cadmium, or qualify for an exemption to these limits as defined in the Annexes of Directive 2000/53/EC (ELV). Regarding the REACH Regulation, the information TE provides on SVHC in articles for this part number is based on the latest European Chemicals Agency (ECHA) 'Guidance on requirements for substances in articles' posted at this URL: <https://echa.europa.eu/guidance-documents/guidance-on-reach>


Also in the Series | **AMPMODU Headers**



Automotive Signal & Power Headers(3)




Board-to-Board Headers & Receptacles(1146)



Connector Contacts(15)




Connector Hardware(1)



Rectangular Connector Housings(2)

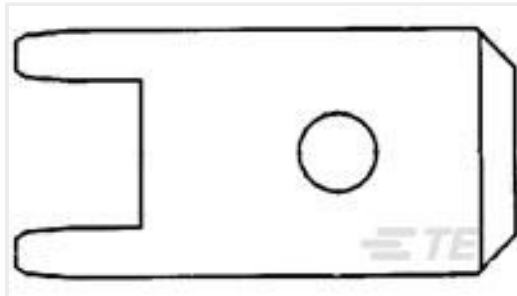


Rectangular Power Connectors(25)

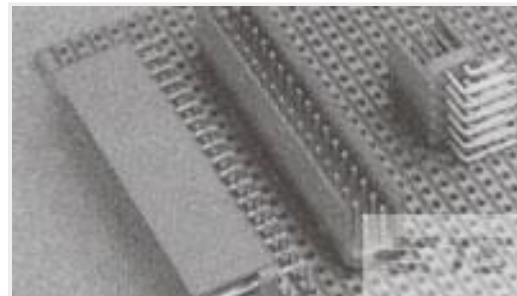


Wire-to-Board Connector Assemblies & Housings(2)

Customers Also Bought



TE Part #170267-1  
250 FASTON, PCB TAB, TCBR



TE Part #281739-8  
HEADER HE14 STRAIGHT 2X8 P



TE Part #1-770966-0  
02P MINI UMNL R/A HDR ASSY SN



TE Part #794894-1  
02P MINI UMNL PLUGS WIRE HOLES



TE Part #1393230-9  
RP3SL012



TE Part #1622442-1  
LR1 1% 33R



TE Part #1982295-1  
ELCON MINI 2P RA HEADER, W /CODING



TE Part #9-2176092-4  
RP 2A 0.25W 7K68 0.1% 25PPM 1K RL



TE Part #2176481-1  
RA73F 1J 5K9 0.1% 5K RL



TE Part #770968-2  
04P MINI UMNL R/A HDR ASSY AU

## Documents

### CAD Files

#### Customer View Model

[ENG\\_CVM\\_829822-8\\_O1.2d\\_dxf.zip](#)

English

### 3D PDF

English

#### Customer View Model

[ENG\\_CVM\\_829822-8\\_O1.3d\\_igs.zip](#)

English

#### Customer View Model

[ENG\\_CVM\\_829822-8\\_O1.3d\\_stp.zip](#)

English

By downloading the CAD file I accept and agree to the [Terms and Conditions](#) of use.

### Datasheets & Catalog Pages

[AMPMODU Interconnection System](#)

[AMPMODU Interconnection System](#)

English

