

Rittal – The System.

Faster – better – everywhere.

Support rail 75 x 20 mm for VX, TS, SE, CM – TS 4396.000

Date : Apr 26, 2021

ENCLOSURES

POWER DISTRIBUTION

CLIMATE CONTROL

IT INFRASTRUCTURE

SOFTWARE & SERVICES

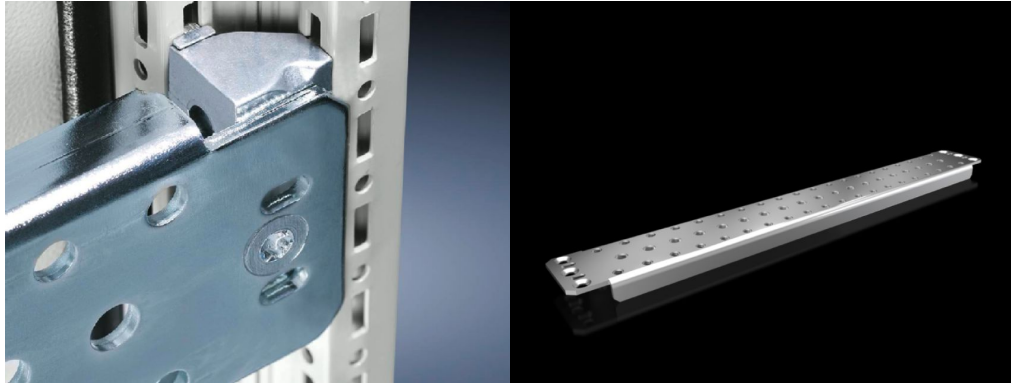
FRIEDHELM LOH GROUP



Support rail 75 x 20 mm for VX, TS, SE, CM – TS

4396.000

created: 26.04.2021 build on www.rittal.com/uk-en



Product description

Design:	Slotted
Description:	For heavy installed equipment such as base isolators or transformers.
Material:	Sheet steel
Surface finish:	Zinc-plated
Supply includes:	Assembly parts

Product description

To fit:	Enclosure type: VX Enclosure type: TS Enclosure type: SE Enclosure type: CM Width: = 600 mm Depth: = 600 mm
Installation options:	On the inner mounting level of the VX enclosure section On the vertical TS, SE enclosure section via snap-on nuts TS 8800.808 or adaptor rails for PS compatibility, height-offset, via TS punched rail 25 x 38 mm On the horizontal TS enclosure section: in the width, in the depth in the case of SE, additionally at the horizontal section in the width at the bottom and top or in the depth at the top via snap-on nuts 8800.808.
Packs of:	4 pc(s).
Weight/pack:	6.56 kg

Copper weight (kg per piece):	0
EAN:	4028177100398
Customs tariff number:	73269098
ETIM 7.0:	EC001285
ETIM 6.0:	EC001285
eCl@ss 8.0/8.1:	27189261
eCl@ss 6.0/6.1:	23159101
Product description:	TS Support rail, for TS, SE, CM, for W/D: 600 mm, slotted