

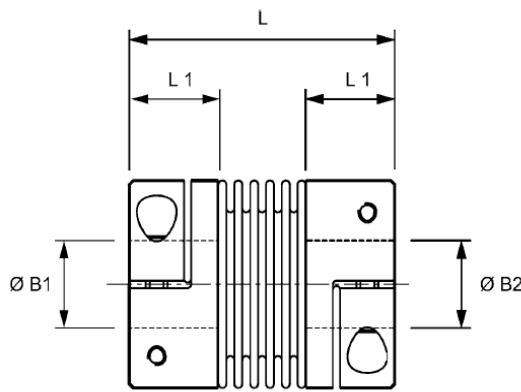
# Bellows Couplings HucoFlex K



Bellows Coupling with fixed clamp shaft connection, short version

## ORDERING INFORMATION

RS PART No.	MANUFACTURER PART No.	BORES B1 & B2 [mm]
1967719	555.66.4646	19
1967720	555.66.4949	22
1967721	555.66.5454	28
1967722	555.66.5858	32



## DIMENSIONS & INTERFACE DATA

Overall Diameter D [mm]	66
Overall Length L [mm]	89
Maximum permissible bore B1, B2 [mm]	32
Length of supported bore L1 [mm]	29
Fastener thread size	M8
Fastener tightening torque [Nm]	40
Coupling approx weight [g]*	490

## MATERIALS

Hubs Aluminium alloy  
 Bellows Spring Quality  
 Stainless Steel  
 Fasteners Alloy Steel

## PERFORMANCE DATA

Maximum speed [ $\text{min}^{-1}$ ]	8700
Peak Torque [Nm]	60
Maximum shaft angular misalignment [deg]	2
Maximum shaft radial misalignment [mm]	0.25
Maximum shaft axial displacement [mm]	1
Torsional Stiffness [ $\text{Nm} \cdot \text{rad}^{-1}$ ]	50000
Radial Stiffness [N/mm]	340
Axial Stiffness [N/mm]	50

## Temperature Range

-30°C to +120°C

\*weight with max. bore