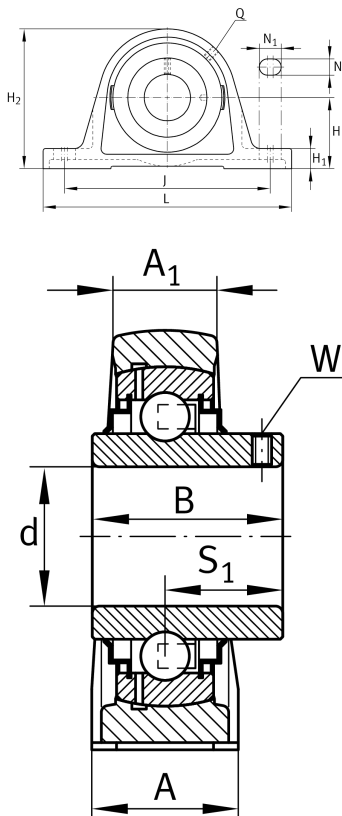
**RASEY80-XL**

Plummer block housing unit

Plummer block housing units RASEY, cast iron housing, radial insert ball bearing with grub screws in inner ring, R seals

X-life

Technical information



Your current product variant

| | | |
|----------|----|----------------|
| Material | GG | Grey cast iron |
|----------|----|----------------|

Main Dimensions & Performance Data

| | | |
|----------------|----------|---------------|
| d | 80 mm | Bore diameter |
| L | 290 mm | Length total |
| H ₂ | 175 mm | Height |
| ≈m | 8.359 kg | Weight |

Mounting dimensions

| | | |
|----------------|--------|----------------------|
| J | 232 mm | Distance fixing bore |
| N | 26 mm | Width (slot) |
| N ₁ | 35 mm | Length (slot) |

Dimensions

| | | |
|----------------|---------|---------------------------------------|
| H | 89 mm | Distance shaft axis |
| A | 78 mm | Width (base) |
| A ₁ | 55 mm | Width (head) |
| H ₁ | 30 mm | Height (base) |
| B | 82.6 mm | Width |
| S ₁ | 49.3 mm | Distance of raceway to locking collar |
| Q | M6 | Connection thread for lubrication |



Additional information

| | |
|----------------|---------------------|
| ASE16 | Housing |
| GYE80-XL-KRR-B | Bearing designation |

Temperature range

| | | |
|------------------|--------|----------------------------|
| T _{min} | -20 °C | Operating temperature min. |
| T _{max} | 100 °C | Operating temperature max. |