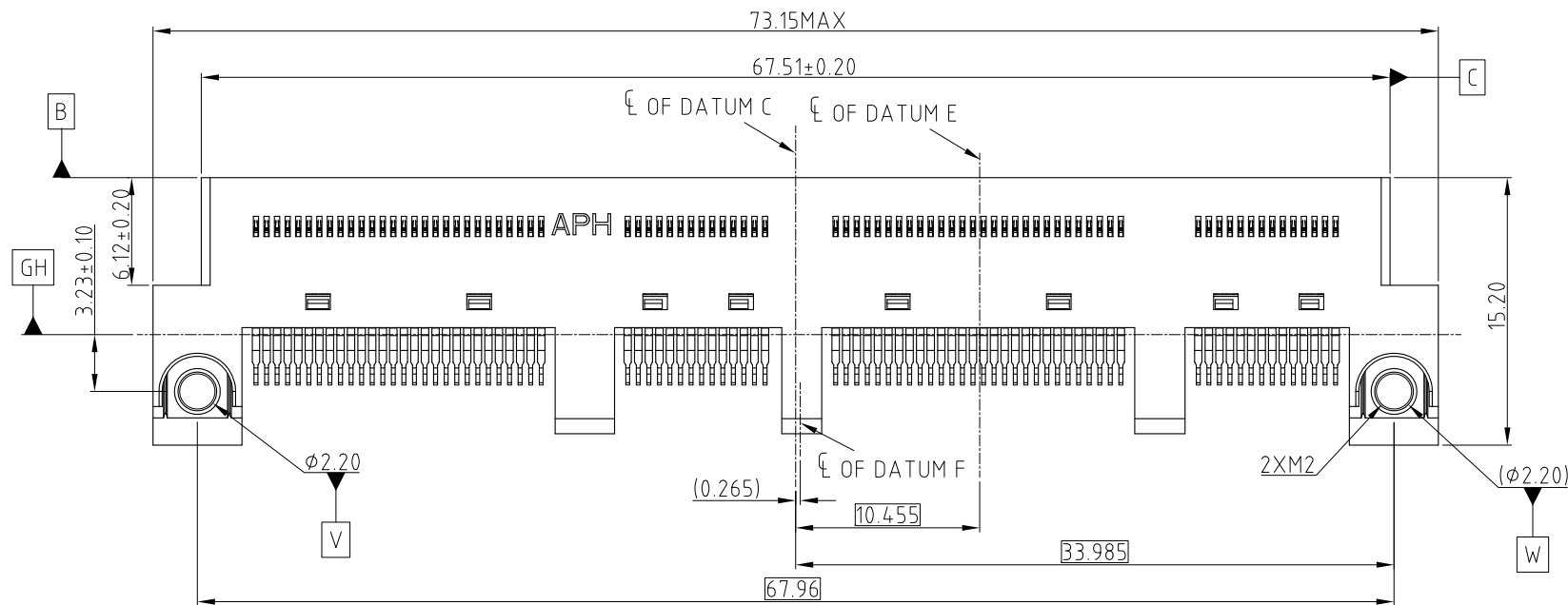
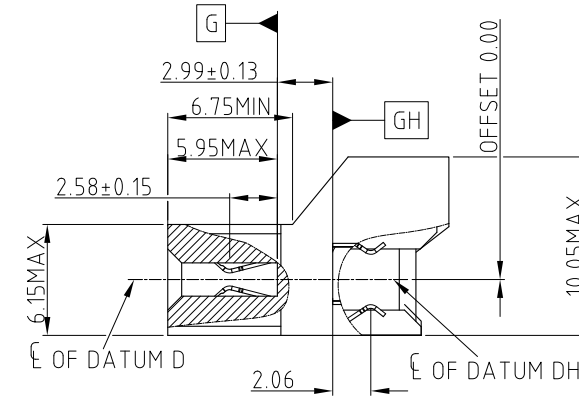
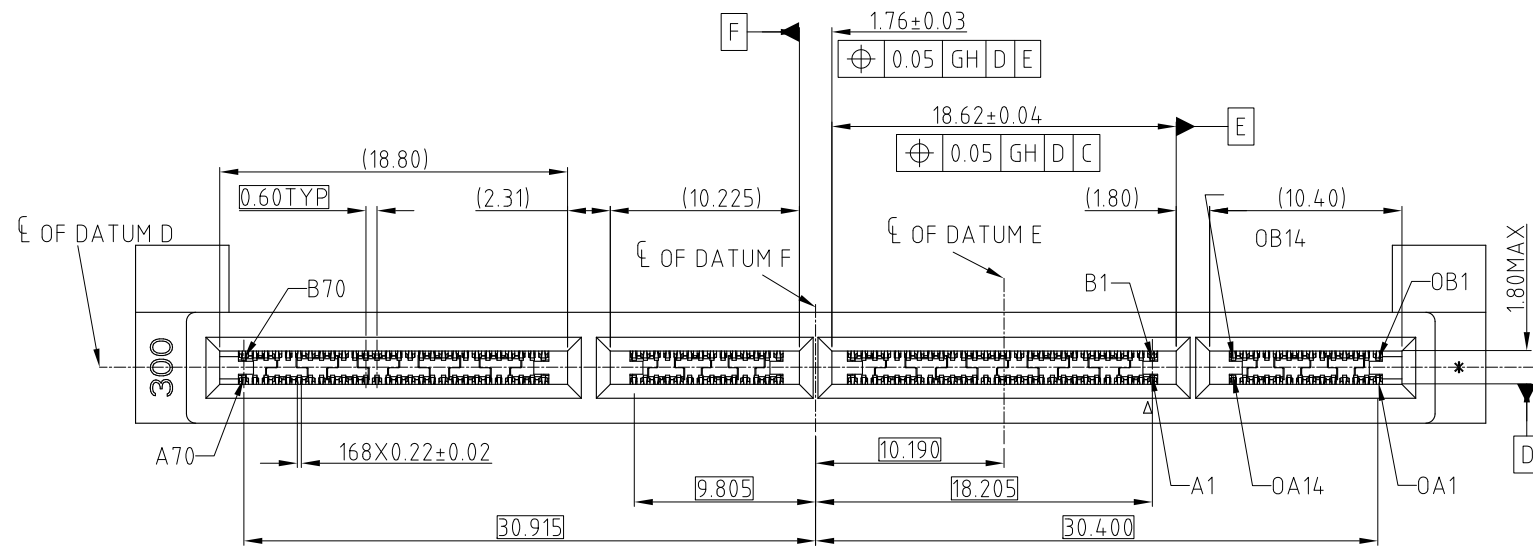


This document is the property of Amphenol Corporation and is delivered on the express condition that it is not to be disclosed, reproduced or used, in whole or in part, for manufacture or sale by anyone other than Amphenol Corporation without its prior consent, & that no right is granted to disclose or to use any information in this document.

# CUSTOMER DRAWING

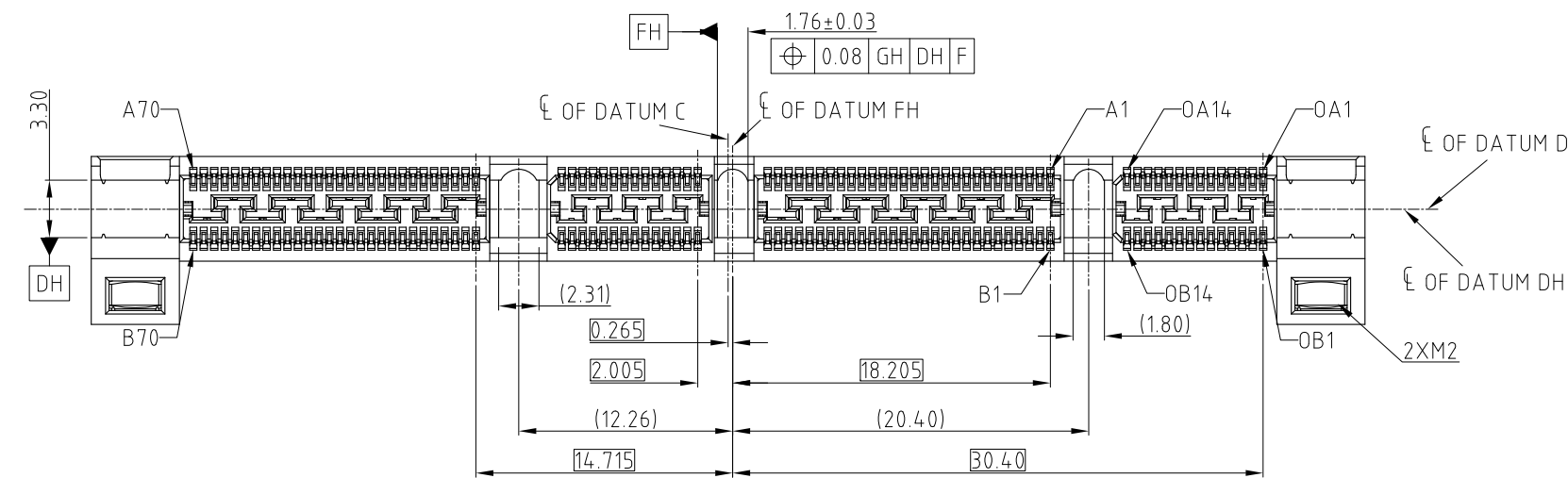
## REVISIONS

SYM	ECN	DESCRIPTION	DATE	APPROVED
1	CDXXXX	PRELIMINARY PROPOSAL	Oct.15,2018	YH
2	CDXXXX	THE THICKNESS OF HOUSING CHANGED TO 6.00MM	Mar.19,2019	YH
3	CD1733	THE OFFSET CHANGED FROM 0.3MM TO 0.00MM	Apr.02,2019	YH
4	CD1819	CHANGE NUT FROM STANDARD TO RECTANGLE AND ADD PACKING INFORMATION	Jul.08,2019	YH
5	CD1857	STANDARDIZE THE WAFER CONSTRUCTURE	Sep.25,2019	YH



**NOTE:**

- MATERIAL:**  
HOUSING: HIGH TEMPERATURE THERMOPLASTIC BLACK UL94-V0  
CONTACT: COPPER ALLOY  
NUT: STAINLESS STEEL
- PLATING:**  
CONTACT: MATING AREA: Au THICKNESS PLEASE REFER TO PN SYSTEM, 1.27-2.54 μm NICKEL UNDERPLATED  
SOLDER AREA: 1.27 μm MIN TIN OVER 1.27-2.54 μm NICKEL UNDERPLATED
- ELECTRICAL PERFORMANCE:**  
RATED CURRENT: 1.1A/PIN UP TO 12PINS  
LLCR: 30mΩ MAX, DELTA 15 mΩ.  
INSULATION RESISTANCE: 1000MΩ MIN
- DURABILITY:** 200 CYCLES.
- MATERIAL SHOULD BE FULFILLED AMPHENOL SPEC#S-SN-004**
- ORDERING PN: REFER TO THE PN SYSTEM ME101681340X41X**



SCREW	PLATING SPEC
1 WITHOUT SCREWS	1 0.76um Au
2 WITH SCREWS	2 0.38um Au
	3 GOLD FLASH
	4 0.76GXT
	5 0.38GXT

UNLESS OTHERWISE SPECIFIED TOLERANCES	
U.S.	METRIC
.X +/-	0.25
.XX +/-	0.20
.XXX +/-	0.15
FRACTIONS +/-	
ANGLES +/-	5°

APPROVAL		DATE
DRAWN	Johnny	Sep.25,2019
CHECKED	Ly.Yi	Sep.25,2019
APPROVED		
DRAWING FILE :		
INTERNAL\ME\C ME101681340X41X		
ANGLE OF PROJECTION		

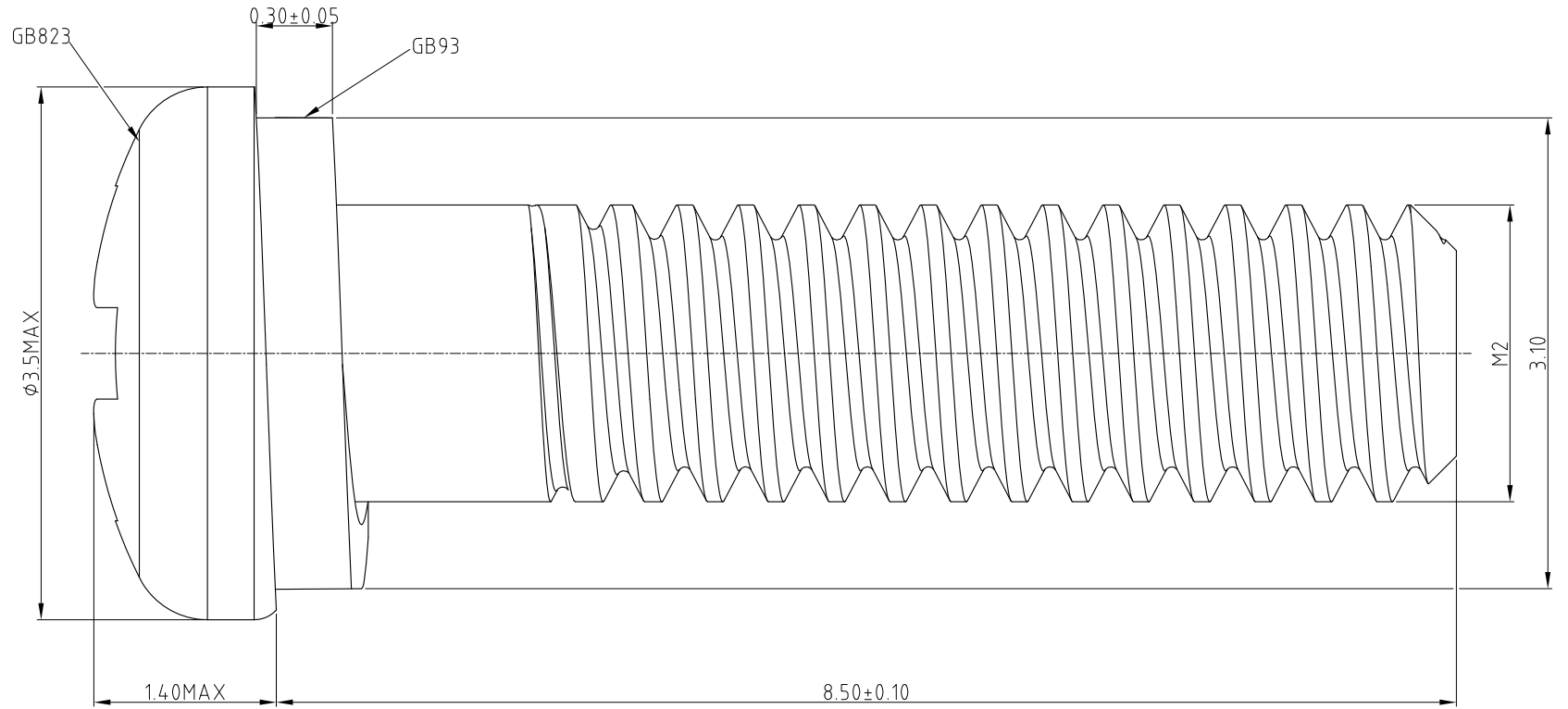
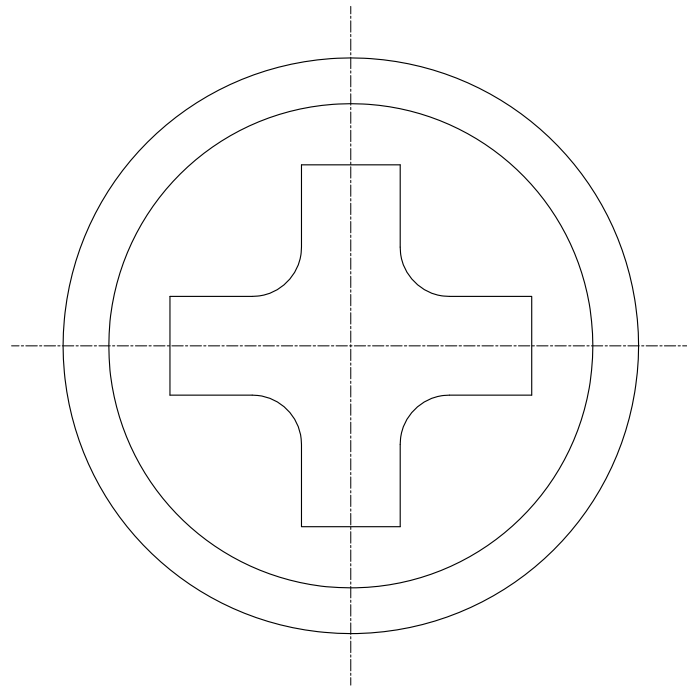
<b>Amphenol</b>		
TITLE		
MINI COOL EDGE 168P STRADDLE MOUNT MATE 3.00PCB 0.00 OFFSET		
SIZE	DRAWING NO.	REV.
A3C	ME101681340X41X	5
SCALE	NONE	SHEET 1 OF 4



This document is the property of Amphenol Corporation and is delivered on the express condition that it is not to be disclosed, reproduced or used, in whole or in part, for manufacture or sale by anyone other than Amphenol Corporation without its prior consent, & that no right is granted to disclose or to use any information in this document.

CUSTOMER DRAWING

REVISIONS				
SYM	ECN	DESCRIPTION	DATE	APPROVED
		SEE SHEET 1		



SCREW

NOTE:

1. MATERIAL: SUS304
2. DIMENSIONS CONFORM TO GB823, GB93,
3. THE TORQUE 0.17N.M MAX



UNLESS OTHERWISE SPECIFIED TOLERANCES	
U.S.	METRIC
.X +/-	0.25
.XX +/-	0.20
.XXX +/-	0.15
FRACTIONS +/-	
ANGLES +/-	5°

FOR MATERIALS AND FINISHES SEE NOTES

REMOVE SHARP EDGES
DIMENSIONS
— U.S. — INCHES
(METRIC) (mm)

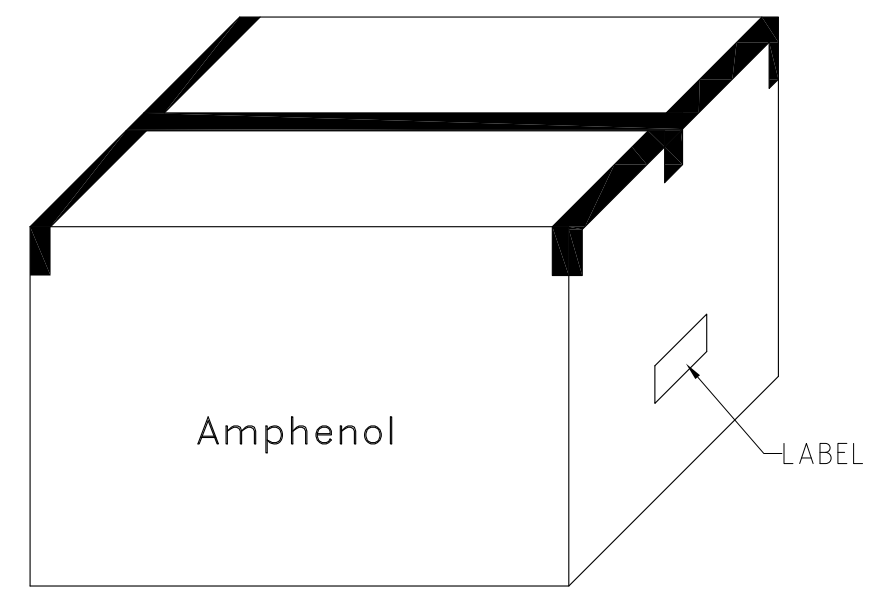
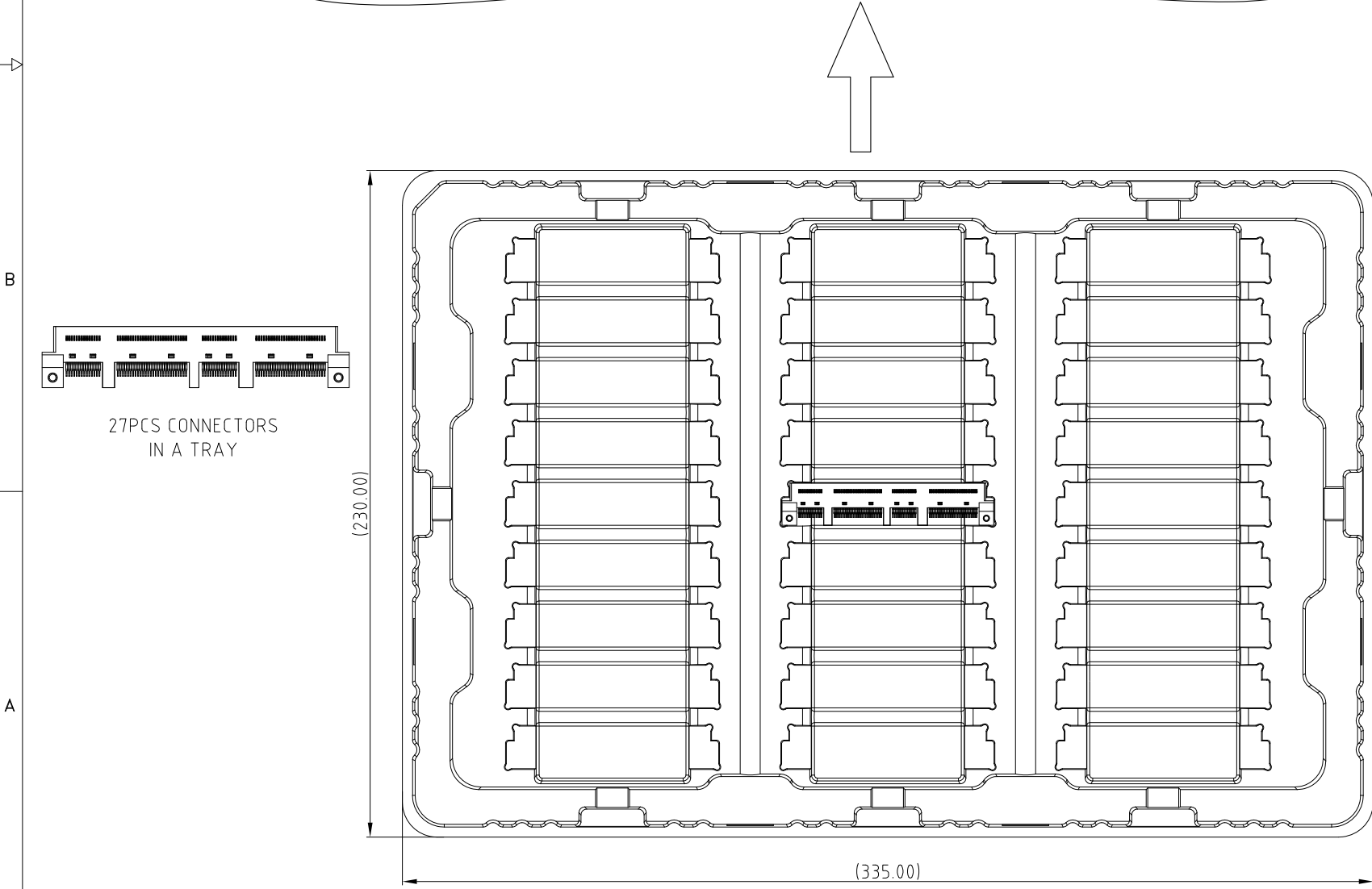
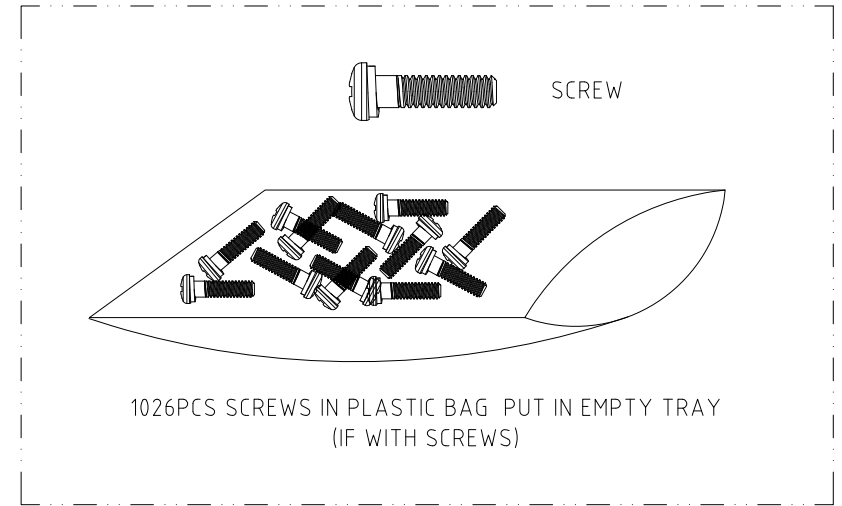
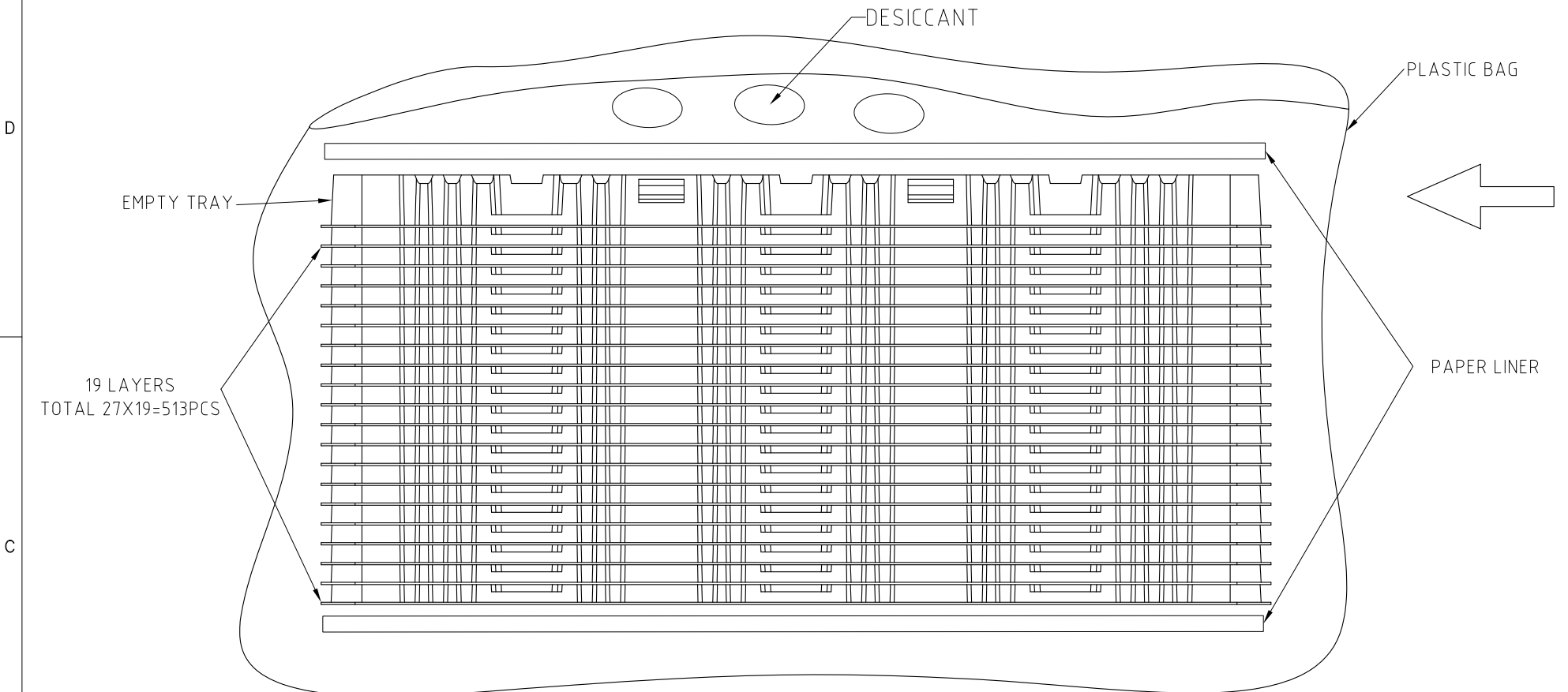
APPROVAL		DATE
DRAWN	Johnny	Sep.25,2019
CHECKED	Ly.Yi	Sep.25,2019
APPROVED		
DRAWING FILE :		
INTERNAL\ME\C ME101681340X41X		
ANGLE OF PROJECTION		

<b>Amphenol</b>		
TITLE		
MINI COOL EDGE 168P STRADDLE MOUNT MATE 3.00PCB 0.00 OFFSET		
SIZE	DRAWING NO.	REV.
A3	C ME101681340X41X	5
SCALE	NONE	SHEET 3 OF 4

This document is the property of Amphenol Corporation and is delivered on the express condition that it is not to be disclosed, reproduced or used, in whole or in part, for manufacture or sale by anyone other than Amphenol Corporation without its prior consent, & that no right is granted to disclose or to use any information in this document.

CUSTOMER DRAWING

REVISIONS				
SYM	ECN	DESCRIPTION	DATE	APPROVED
		SEE SHEET 1		



513PCS /CARTON

UNLESS OTHERWISE SPECIFIED TOLERANCES	
U.S.	METRIC
.X +/-	0.25
.XX +/-	0.20
.XXX +/-	0.15
FRACTIONS +/-	
ANGLES +/-	5°
FOR MATERIALS AND FINISHES SEE NOTES	
REMOVE SHARP EDGES	
DIMENSIONS	
—U.S.—	INCHES
(METRIC)	(mm)

APPROVAL	DATE
DRAWN Johnny	Sep.25,2019
CHECKED Ly.Yi	Sep.25,2019
APPROVED	
DRAWING FILE :	
INTERNAL\ME\C ME101681340X41X	
ANGLE OF PROJECTION	

Amphenol		
TITLE		
MINI COOL EDGE 168P STRADDLE MOUNT MATE 3.00PCB 0.00 OFFSET		
SIZE	DRAWING NO.	REV.
A3	C ME101681340X41X	5
SCALE	NONE	SHEET 4 OF 4