

## 17 Watt - LD17W Series

CONSTANT VOLTAGE OR CONSTANT CURRENT LED DRIVER



LD17W Series  
**17W**

### Model: LD17W Series

- Drive Mode: Constant Current or Constant Voltage
- Technology: PFC Off-Line Switch Mode
- Output Power: 17W Max.
- Input Voltage: 100 to 277VAC, 47 - 63Hz
- Number of Outputs: One
- Output Voltages: 6VDC - 36VDC
- Output Currents: 470mA - 1400mA

### Environmental

1. Operating temperature: Tc 80C Maximum. Reference -30 to +60°C ambient
2. Storage temperature range: -40 to +85°C
3. Humidity (non-condensing): 5% - 95%RH
4. Cooling: Convection
5. Vibration Frequency: 5-55Hz/2g, 30 minutes
6. Impact resistance: 1g/s
7. MTBF@ 40°C: 543,000 hours @ Full Load per MIL-217F Notice 2.

### Safety and Compliance

1. UL8750, EN61347, CSA 22.2 safety compliant
2. FCC, 47CFR Part 15 Class B compliant
3. Water resistant and Dust Proof Design: IP66, NEMA4, for Dry, Damp, Wet Locations.
4. Compact, Lightweight Design.
5. Safety Isolation between Primary and Secondary
6. Meets EN61000-3-2 & EN61000-3-3 Class C
7. Protection: output over-voltage, output over-current, output short circuit, auto-recovery

### Electrical Specifications at 25°C

- Input voltage range: 100 to 277VAC
- Frequency: 47 - 63HZ
- Power Factor: > .94 at full load 120Vac/230Vac 50/60Hz
- Inrush current: <10A at 25C, 230V, cold start, Max. Load
- Input current: 0.20A at 120Vac, 60Hz, Maximum Load
- Efficiency: 72% typical at 120Vac 60Hz, 230Vac 50Hz
- Maximum output power: 17W
- Constant Current regulation: +/-1% Over Input Line Variation
- Load regulation accuracy: +/-3%
- Leakage current: 300uA typical; Hold up time: half cycle



IP66



### Constant Current Versions

Part Number	US Class 2	CN Class 2	Output Voltage Range	Output Constant Current	Current Accuracy	Output Power Maximum	Typical Efficiency <sup>(1)</sup>
LD17W-36-C0470	YES	YES	18 - 36 VDC	470 mA	± 3%	17W	74%
LD17W-24-C0700	YES	YES	12 - 24 VDC	700 mA	± 3%	17W	74%
LD17W-12-C1400	YES	YES	6 - 12 VDC	1400 mA	± 3%	17W	72%

### Constant Voltage Versions

Part Number	US Class 2	CN Class 2	Output Voltage	Output Current Range	Voltage Accuracy	Output Power Maximum	Typical Efficiency <sup>(1)</sup>
LD17W-36	YES	YES	36 VDC	118 - 470 mA	± 5%	17W	74%
LD17W-24	YES	YES	24 VDC	175 - 700 mA	± 5%	17W	74%
LD17W-12	YES	YES	12 VDC	350 - 1400 mA	± 5%	17W	72%

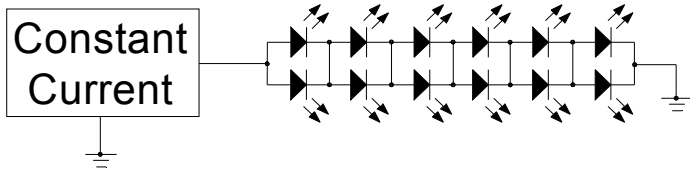
### Notes

1. Typical efficiency measured at 230VAC input, full load

# 17 Watt - LD17W Series

CONSTANT VOLTAGE OR CONSTANT CURRENT LED DRIVER

## Typical Constant Current Application Schematic

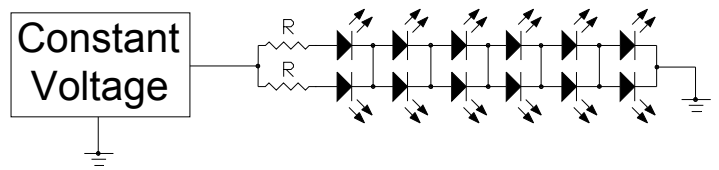


### Model Number

Model: LD17W-24-C0700, 700mA Constant Current mode at 12~24Vdc.

Configuration is based on LED's with the following parameters: Parallel Strands of 6ea.  
Vf: 3.0V - 3.5V If: 350mA

## Typical Constant Voltage Application Schematic



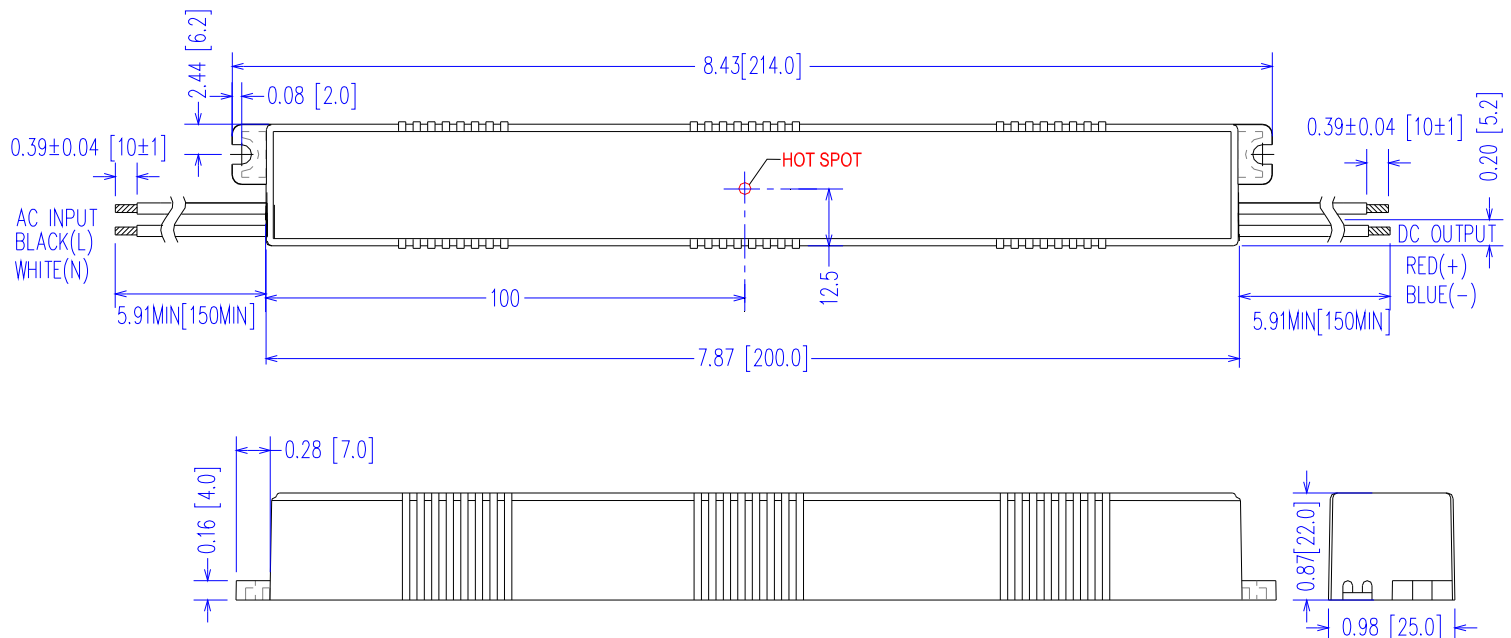
### Model Number

Model: LD17W-24, 24VDC Constant Voltage mode, requires current limiting resistors.

Configuration is based on LED's with the following parameters: Parallel Strands of 6ea.  
Vf: 3.0V - 3.5V If: 350mA  
Recommended value for R is 10 Ohms, 3W

## Mechanical Dimensions: Inches [mm]

Material: Black PC ABS Plastic Case  
Fully Encapsulated  
Weight: 196 grams (6.9 oz) Typical



## Labeling Example

