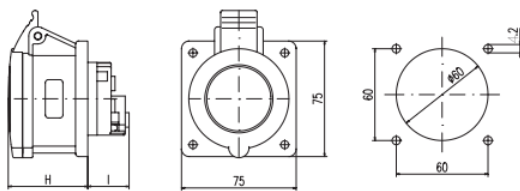


Datasheet

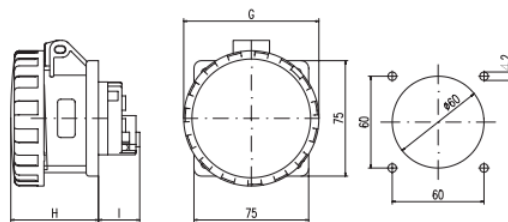
IEC309 Pan Skt strt 16A 230V 2P+E IP67

RS Stock number [410-359](#)

IP44



IP67



		I	H
16A	2P+E	27	51
	3P+E	27	51
	3P+N+E	27	52
32A	2P+E	42	62
	3P+E	42	62
	3P+N+E	42	63

		G	H	I
16A	2P+E	73	56	27
	3P+E	81	57	27
	3P+N+E	88	58	27
32A	2P+E	93	68	42
	3P+E	93	68	42
	3P+N+E	101	69	42

Specifications:

Rated current:	16A - 32A
Rated voltage:	100÷690V~
Frequency:	c.c. - 50÷500Hz
Insulating voltage:	500/690V~
Protection degree:	IP44 - IP66/IP67
Operating temperature according to the reference standard:	-25°C+40°C
Max. operating temperature:	60°C
Glow Wire test:	650°C/850°C
Material:	Engineering plastic
IK degree at 20°C:	IK07 - IK09
Cable inlets:	Cable sleeve IP44 Cable gland IP66/IP67