

## Data sheet

Art.No.: 80.010.4526.0

Relay module FLARE MOVE 230V-1W-6A

"standard relay module flare MOVE 250V-1W-6A, width 6,2 mm, plugable, nominal operating voltage 250V AC/DC, 1 change-over contact 25 0V AC / 6A, AgSnO2;"

1011011010001010010101101  
0100110110010110100101010  
101001101100111001010010  
101010011010101010101010  
1101010011011001011010010  
1010101001010110101010010  
10101010010101101010011

# DIGITALIZATION IN PROGRESS

Art.No.	80.010.4526.0
EAN	4015573647695
Order Unit	10

Certificates / Approvals



## Technical data

### General

Connection type	Screw connection
Number of change-over contacts	1
Detachable clamps	No
Drive, polarization	Polarity free
Drive, function	Mono stable
Forced-guided contacts	No
Complete with socket	Yes
Degree of protection (IP)	IP20

### Technical data

Type of excitation	AC/DC
Rated frequency, auxiliary-/control circuit	50 - 60
Min. rated frequency, auxiliary/control current circuit	50 Hz
Max. rated frequency, auxiliary/control current circuit	60 Hz
Min. nominal voltage DC	230 V
Lower nominal voltage DC	184 V
Upper nominal voltage DC	253 V

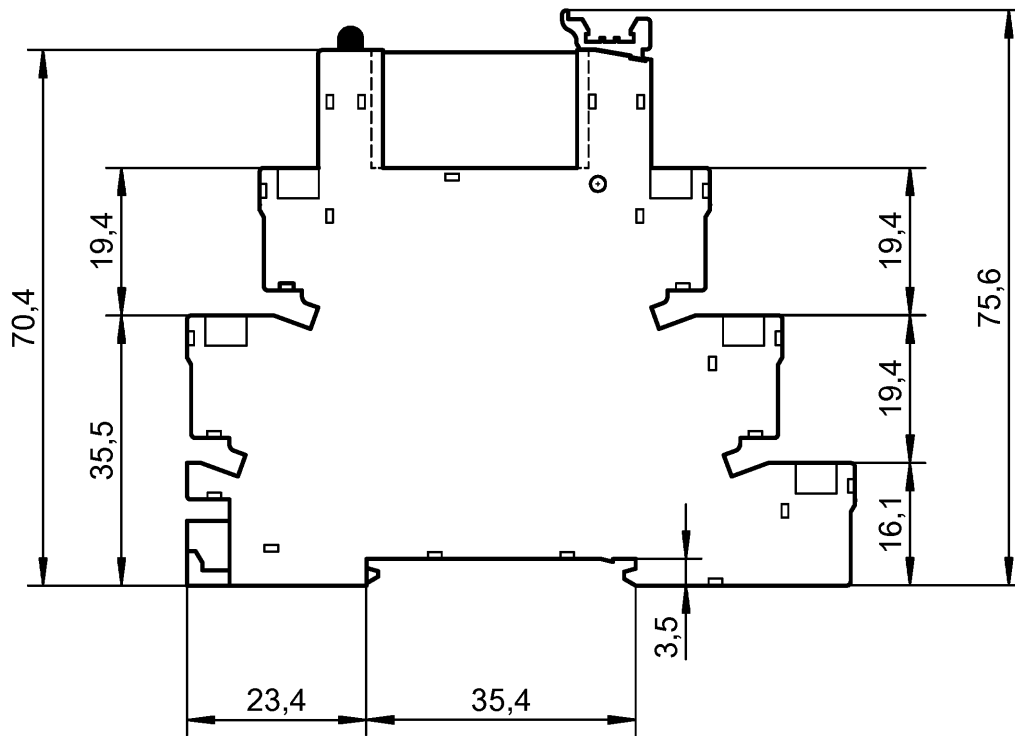
### Dimensions

Depth	76 mm
Width	6.2 mm
Height	88 mm

### Classification

ECLASS 8.1	27371601
ETIM 7.0	EC001437
ETIM 6.0	EC001437
ETIM 5.0	EC001437

ETIM 4.0	EC001437
ETIM 3.0	EC001437



Qu - PEE 12/92

Teile-Nr. / Part No.	Typ / Type
80.010.4501.0	FLARE MOVE 12VDC-1W-6A
80.010.4501.1	FLARE MOVE 12VDC-1W-AU
80.010.4502.0	FLARE MOVE 24VDC-1W-6A
80.010.4502.1	FLARE MOVE 24VDC-1W-AU
80.010.4521.0	FLARE MOVE 12V-1W-6A
80.010.4521.1	FLARE MOVE 12V-1W-AU
80.010.4522.0	FLARE MOVE 24V-1W-6A
80.010.4522.1	FLARE MOVE 24V-1W-AU
80.010.4525.0	FLARE MOVE 115V-1W-6A
80.010.4525.1	FLARE MOVE 115V-1W-AU
80.010.4526.0	FLARE MOVE 230V-1W-6A
80.010.4526.1	FLARE MOVE 230V-1W-AU

Weitere Angaben siehe KATALOG oder eKatalog.  
Additional data see CATALOG or eCatalog.

[www.wieland-electric.com](http://www.wieland-electric.com)  
[eshop.wieland-electric.com](http://eshop.wieland-electric.com)

ja/yes  Stoffverbots- und Deklarationsliste nach WN 5020.010 ist einzuhalten.  
Conformity with Wieland document WN 5020.010 e (list of prohibited / declarable hazardous substances) to be declared!

Freitoleranz nach  
General tolerance

CAD-Zeichnung, keine manuellen Änderungen  
CAD-Drawing, no manual modifications allowed

1. Verwendung:  
First Use:

Blatt:  
Sheet:



Werkstoff/ Material

2019

Tag/ Date

Name

Zeichnung Nr./ Drawing No.

Maßstab/Scale

gezeichnet  
drawn

18.02.

Koetzner

T 80.010.4501.0 01K

geprüft  
checked

Normgepr.  
Stand. check

Maße in mm/Dimensions are in mm

Datei/ File: 018201\_\_01K.DCD

Ersatz für/ Replacement for:



wieland

[www.wieland-electric.com](http://www.wieland-electric.com)

Type

Benennung/ Title

Teilespezifikation /  
Component specification

Index Datum/ Blatt  
Date/ Sheet

Änderung/ Revision

Relaisbaustein