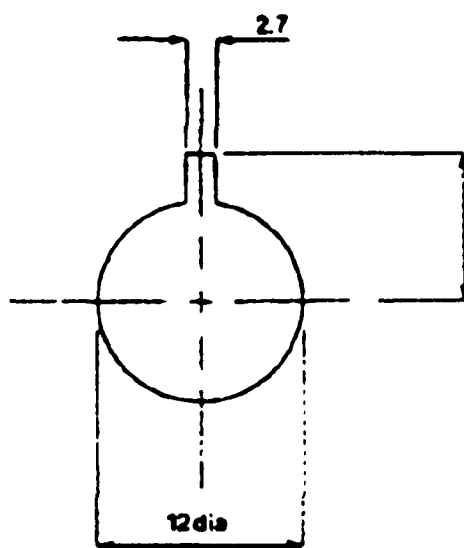
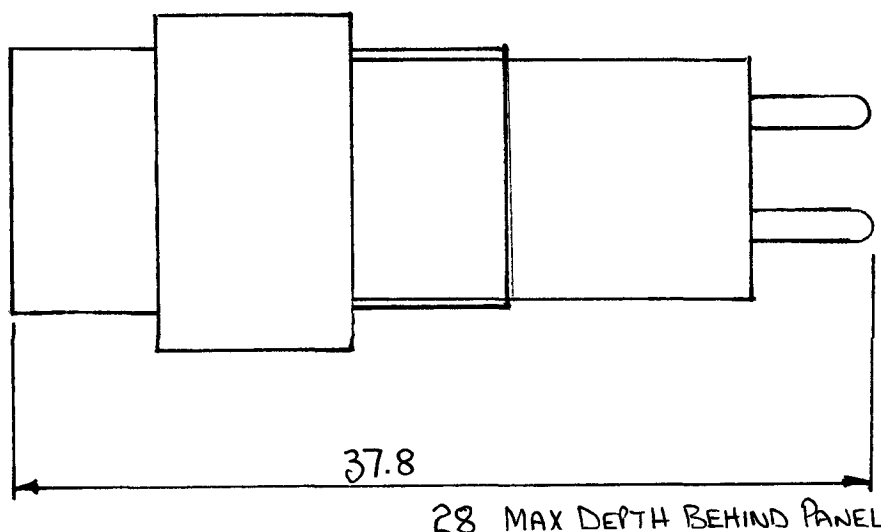
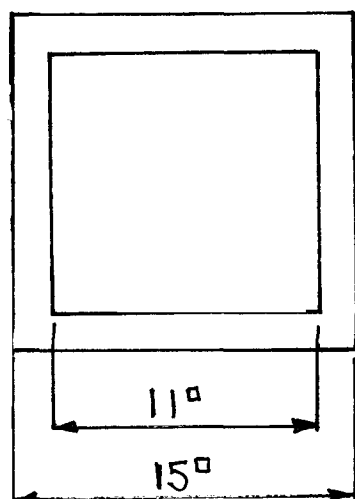




# Technical Library

## Mains Push Button Switch Details


Nominal Tension	250V AC
Nominal Current	3A Resistive
Initial Contact Resistance	<10m ohms
Insulation Resistance	>100M ohms @500V DC
Operating Temperature	-20°C to +70°C
Terminal Contacts	Silver
Termination Tag Length	5mm
Body	Polyacetal



**PANEL CUT-OUT**

RS Components shall not be liable for any liability or loss of any nature (howsoever caused and whether or not due to RS components' negligence) which may result from the use of any information provided in RS literature.

RS Components Ltd. PO Box 99, Corby, Northants, NN17 9RS

 An Electrocomponents Company

Telephone: +44 (0)1536 201234  
© RS Components Ltd. 1999