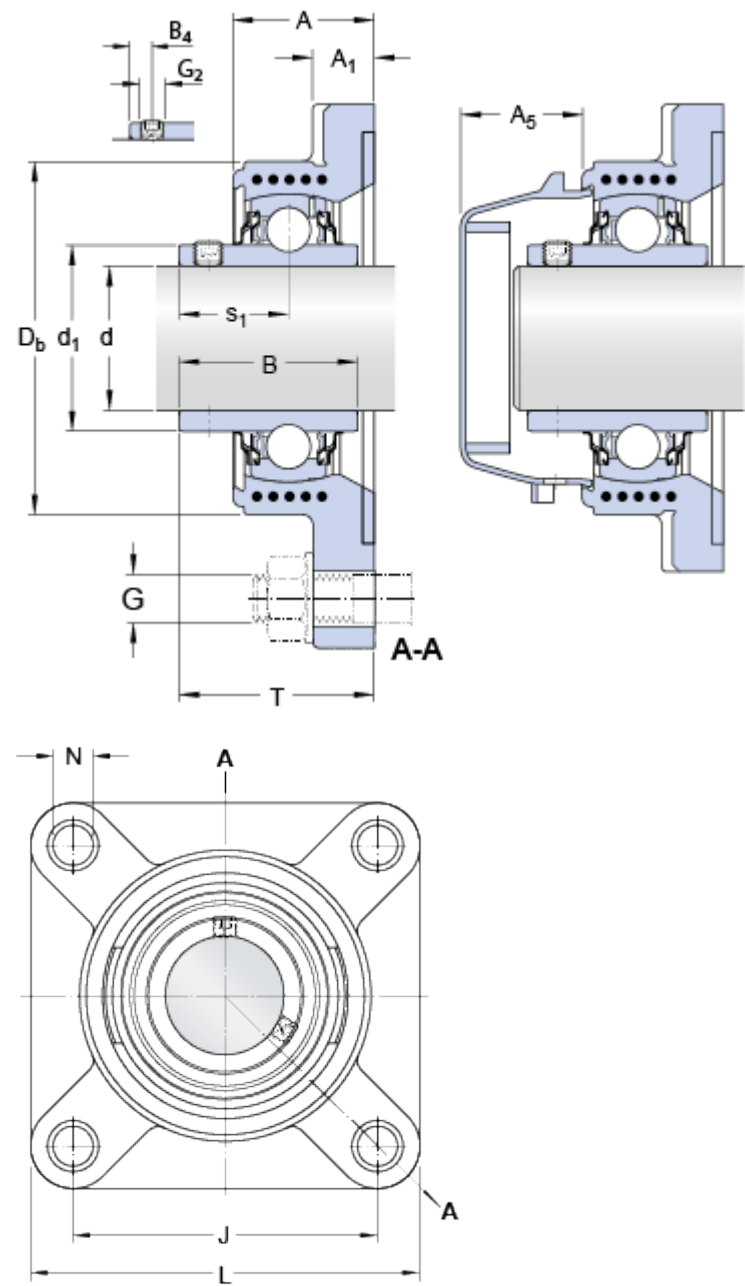


FYWK 35 YTH

This bearing unit will be discontinued at the end of 2019, and new unit series F4BC is already available as its replacement.

Compliance with standard	ISO
Housing material	Composite for the SKF Food Line
Sealing solution	Multiple seals

Dimensions



d	35	mm
d ₁	≈ 46.1	mm
A	35	mm
A ₁	17	mm
A ₅	32	mm
B	42.9	mm
B ₄	6	mm
D _b	90	mm
J	92	mm
L	118	mm
N	14.8	mm
s ₁	25.4	mm
T	46.4	mm

Calculation data

Basic dynamic load rating	C	21.6	kN
Basic static load rating	C ₀	15.3	kN
Fatigue load limit	P _u	0.655	kN
Limiting speed		3200	r/min
with shaft tolerance h6			

Mass			
Mass bearing unit		0.75	kg

Mounting information			
Thread grub screw	G ₂	M6x0.75	
Hexagonal key size for grub screw	N	3	mm
Recommended tightening torque for grub screw		4	N·m
Recommended diameter for attachment bolts, mm	G	12	mm
Recommended diameter for attachment bolts, inch	G	0.5	in

Included products	
Housing	FYWK 507 Y
Bearing	YAR 207-2RF/HV

Associated products	
End cover	ECW 207