

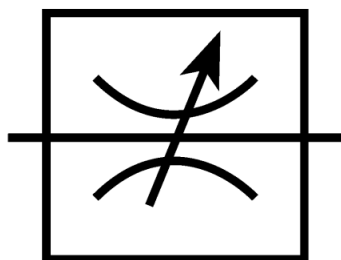
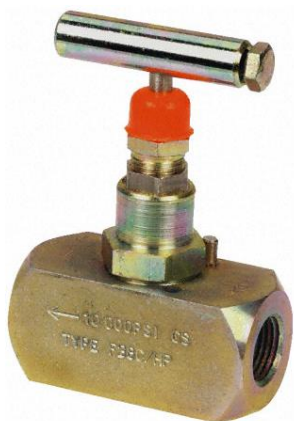


ENGLISH

Datasheet

Stock No: 297-5928

RS Pro Pro Line Mounting Hydraulic Flow Control Valve, NPT 1/4, 700 bar



Double acting

Product Details

Isolator Needle Valves

These high pressure isolator needle valves, available in BSP and NPT thread forms, are designed to shut off and control the flow in both directions.

Flow Control Valves

Single acting and double acting in-line flow control valves. Single acting valves allow flow control in one direction and free flow in the opposite direction. Double acting valves allow flow control in both directions.



ENGLISH

Specifications:

Manufacturer Series	F
Connection Port Thread	NPT 1/4
Maximum Flow Rate	40L/min
Body Material	Carbon Steel
Seal Material	PTFE
Maximum Operating Pressure	700 bar
Thread Size	1/4 in
Thread Standard	NPT
Maximum Operating Temperature	+240°C
Minimum Operating Temperature	-20°C