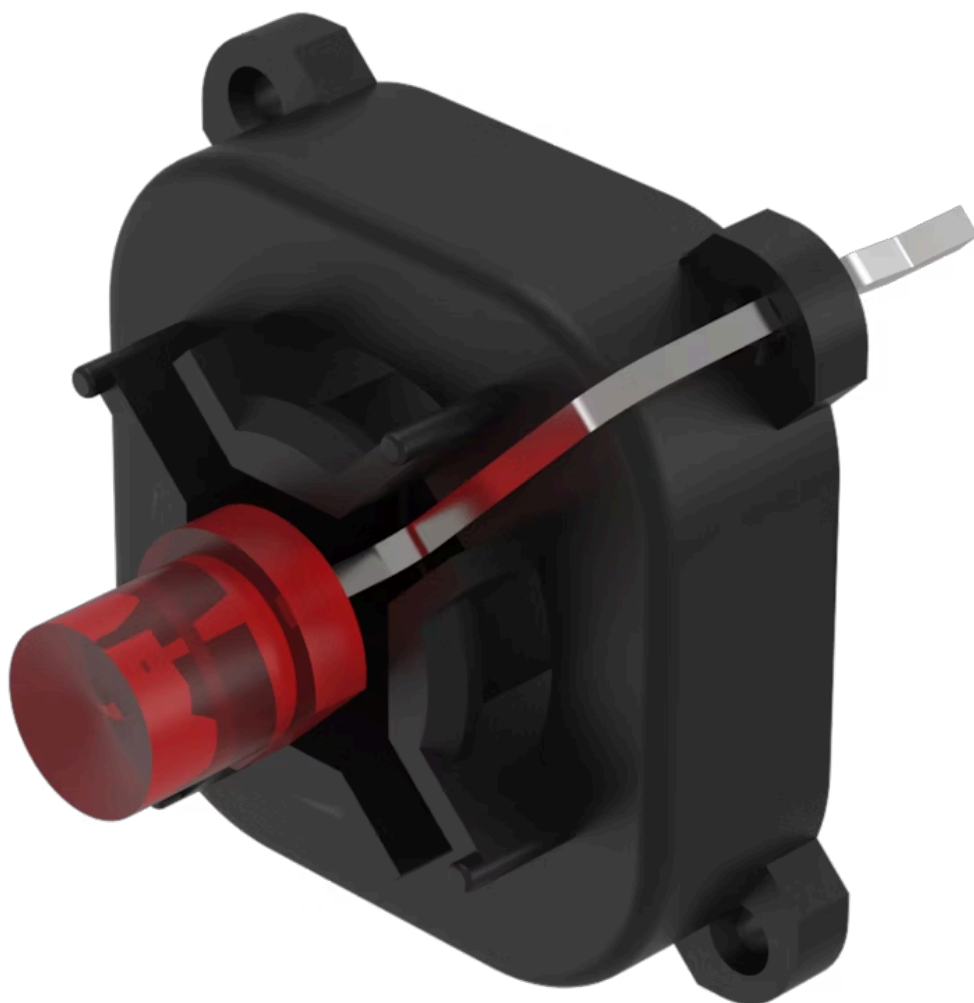


# Indicator element

70-820.2S

Distribution by  
Rs-online



<https://rs-online.eao.com/p/70-820.2S>

Your product:

---



## 70-820.2S

### Indicator element

#### OPERATING-/INDICATION PART

**Illumination colour:** Red

#### ELECTRICAL CHARACTERISTICS

**Operating voltage:** 2 DC

**Lumi. Intensity:** 160 mcd

#### MECHANICAL CHARATERISTIC

**Terminal:** PCB terminal

**Weight:** 0.001 kg

#### CERTIFICATE

**REACH:** REACH compliant

**RoHS:** RoHS compliant

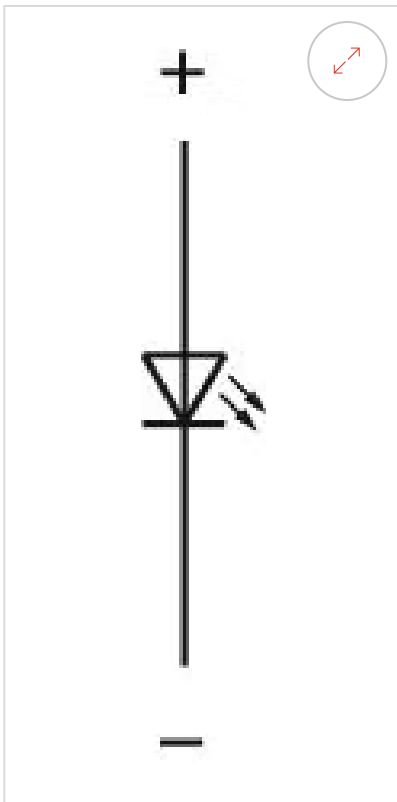
#### OTHER

**Short Description:** Indicator element, Red, Single-LED, 2 DC, PCB terminal

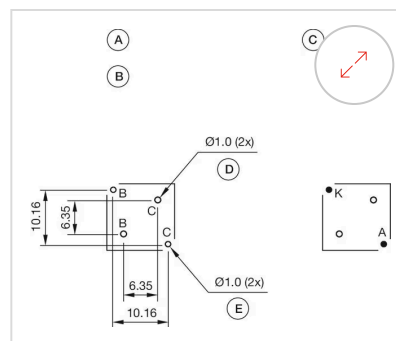
**Kind of illumination:** Single-LED

**Hints:** The customer has to decide what series resistor shall be used to the LED

**Wiring diagrams:**



#### Component layouts:



- A = Illumination element
- B = Single LED
- C = Drilling plan (component side)
- D = Hole for centering pins non-metallic
- E = Hole for LED

#### Dimension drawings:

