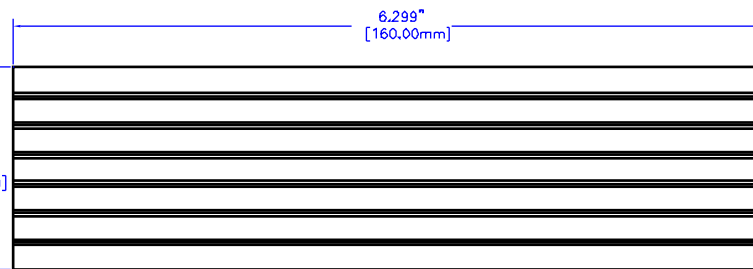


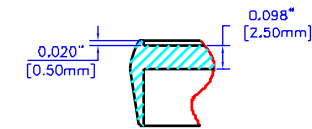
Base Plate is removable.

EXTRUSION

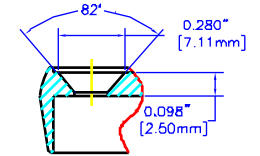


NOTES

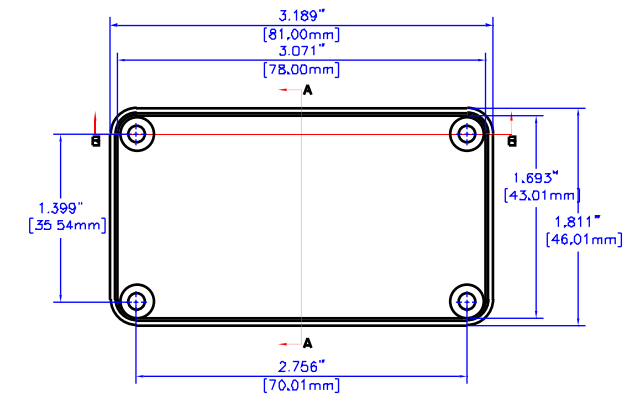
Constructed from extruded Al with a minimum thickness of 0.06"(1.5mm)
 Available in clear or Black anodized finish
 Version 2 includes two Black plastic one piece bezel/panels.
 Hardware and self-adhesive rubber feet included.



SECTION A-A
SCALE 2:1



SECTION B-B
SCALE 2:1



END PANEL

For the best fit print on legal size paper.

THIS DRAWING IS PROPRIETARY INFORMATION OF HAMMOND MFG.CO.LTD. NOT TO BE USED WITHOUT EXPRESSED WRITTEN PERMISSION OF HAMMOND MFG.CO.LTD.

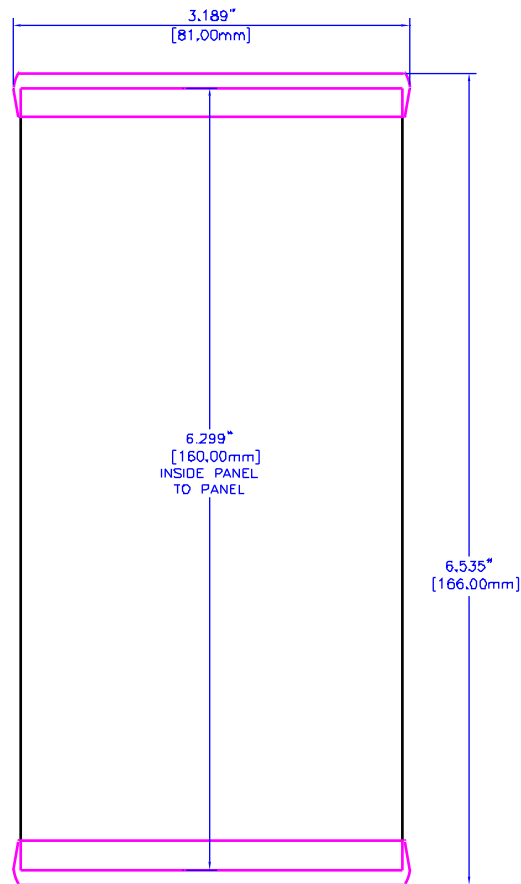
Rev	ECN	Description	Date	By
△	N/A	RELEASE	01 15 02	MM

Unless otherwise specified dimensions are in inches
Tolerances are:

.X	± .1
.XX	± .02
.XXX	± .010
.XXXX	± .0005
Holes	± .0050
Angles	± .5°

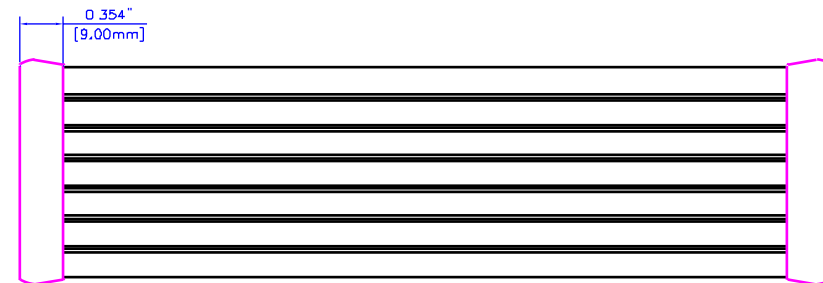
Dwn	M. MERCER
Date	01 15 02
Chk	---
Mat'l	Extruded Aluminum
Sheet	1 of 2

HAMMOND MANUFACTURING CO. LTD. Electronics Group, Waterloo, Ont. - Cheektowaga, NY	
HAMMOND 1455 SERIES EXTRUDED ALUMINUM	
Part#	1455K1602
Dwg#	1455K1602A



NOTES

Constructed from extruded Al with a minimum thickness of 0.06"(1.5mm)
 Available in clear or Black anodized finish
 Version 2 includes two Black plastic one piece bezel/panels.
 Hardware and self-adhesive rubber feet included.



ASSEMBLED

THIS DRAWING IS PROPRIETARY INFORMATION OF HAMMOND MFG.CO.LTD, NOT TO BE USED WITHOUT EXPRESSED WRITTEN PERMISSION OF HAMMOND MFG.CO.LTD.

Rev	ECN	Description	Date	By
△	N/A	RELEASE	01 15 02	MM

Unless otherwise spec'd dimensions are in inches
 Tolerances are:
 X ± .1
 XX ± .02
 XXX ± .010
 XXXX ± .0050
 Holes ± .005
 Angles ± .5°

Own	M, MERCER
Date	01 15 02
Chk	---
Mot'l	Extruded Aluminum
Sheet	1 of 1

For the best fit print on legal size paper.

HAMMOND MANUFACTURING CO. LTD.
 Electronics Group, Waterloo, Ont. - Cheektowaga, NY

**HAMMOND 1455 SERIES
 EXTRUDED ALUMINUM**

Part#: 1455K1602 Dwg: 1455K1602A