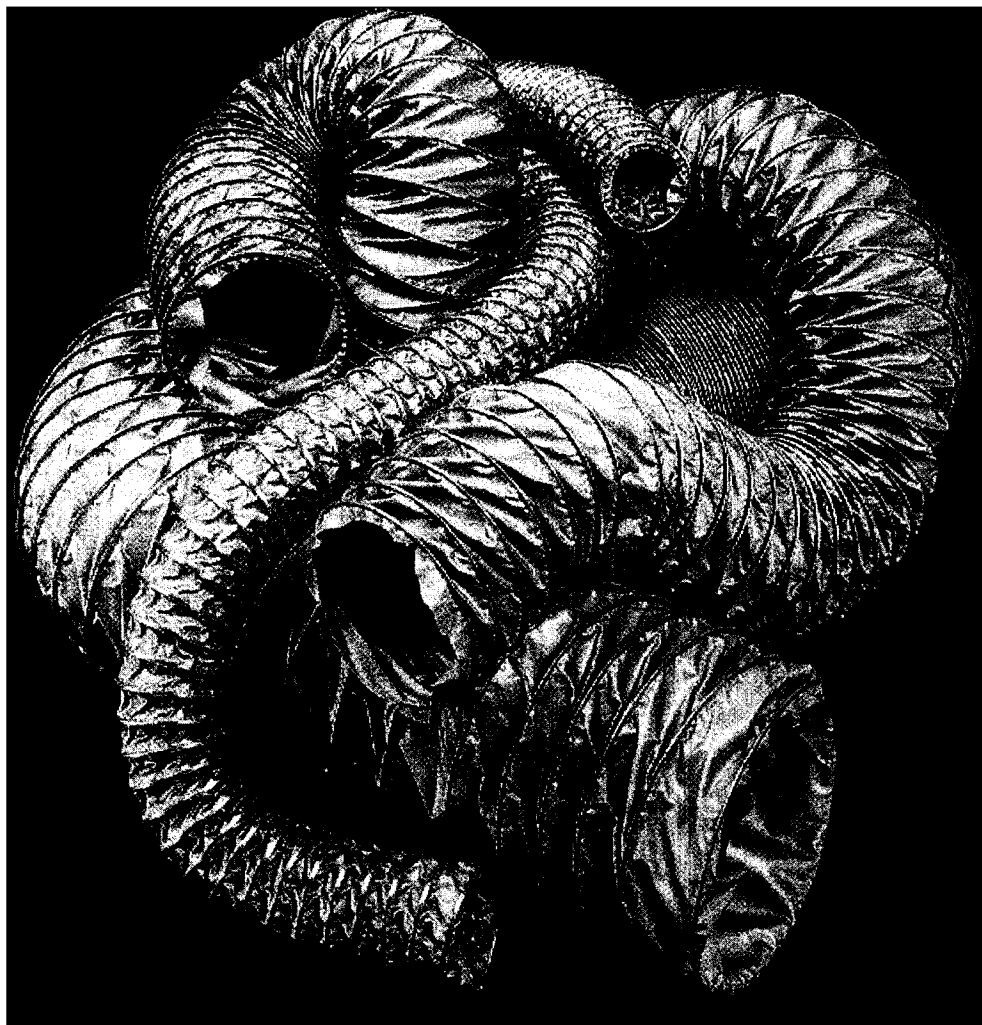


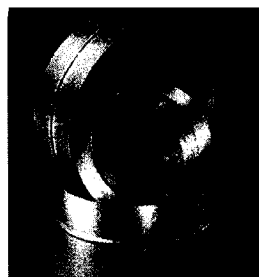
AIRFLOW

SPECIALISTS IN AIR MOVEMENT TECHNOLOGY

AIRFLEX RANGE



ACCESSORIES



Joining Piece

- Strong durable aluminium foil or pvc coated fibre glass fabric
- Good compressibility for storage and transit
- Sizes from 50 to 300 mm diameter

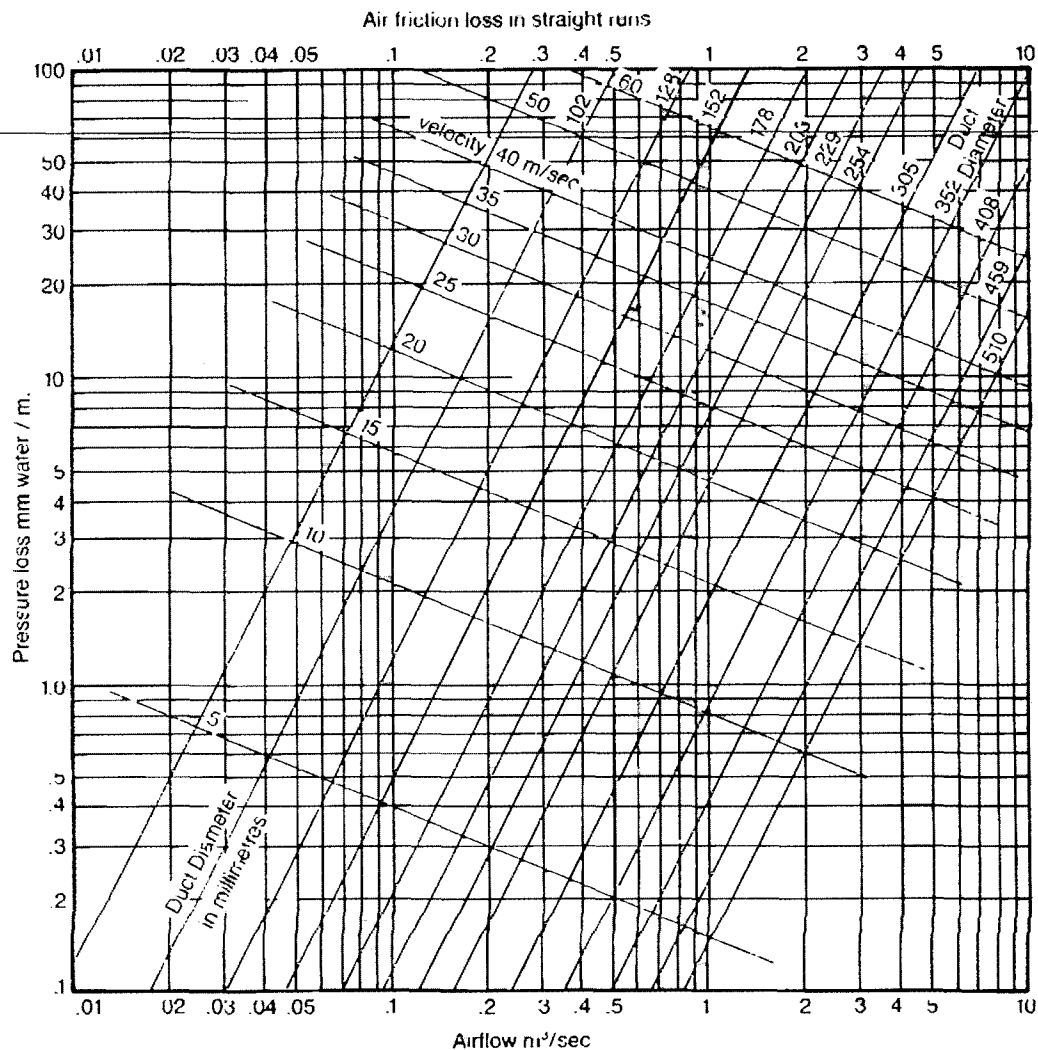


Worm Drive Clip

- Lengths 1.5, 3.0, 5.0, 6.0 or 10 metres
- Meets BS 476, Parts 6, 7 and 20
- Optional joining accessories
- Totally mechanically bonded
- Operating temp – 5°C to 90°C

TECHNICAL DATA

DATA CHART



BENDS – pressure drop caused by bends may be considerable so changes of direction should be made as gently as possible. Figures for 90° bends available from manufacturer.
Fan performance will be maximised by installing in fully extended straight runs.

AIRFLOW is manufactured using aluminium foil or a grey PVC coated fibre-glass fabric, mechanically interlocked by a corrosion-resistant metal spiral helix and PVC cover on the outside of the fabric.

This high quality flexible ducting is totally mechanically locked and no solvent is used in the manufacturing process.

Available in sizes 100 to 300m diameters each with a choice of 1.4, 3.0, 5.0 and 10 metre lengths.

The operating temperature range is -5°C to +90°C at 20°C ambient

The compressibility and external joining ring of this extremely flexible ducting minimises damage in transit and on-site handling.

Manufactured to BS 5750 Pt 1 – ISO 9001, the ducting meets the requirements of BS 476, Parts 6, 8 and 20.

Available as optional extras are joining pieces and worm drive clips

Airflow Developments Limited reserve the right, in the interests of continuous development, to alter specifications without prior notice. All orders are accepted subject to our conditions of sale which are available on request.

AIRFLOW

AIRFLOW DEVELOPMENTS LIMITED
Lancaster Road, Cressex Business Park
High Wycombe, Buckinghamshire HP12 3QP
Telephone 01494-525252. Fax: 01494-461073
E-mail: info@airflow.co.uk
WWW: <http://www.airflow.co.uk>



Dealer Stamp