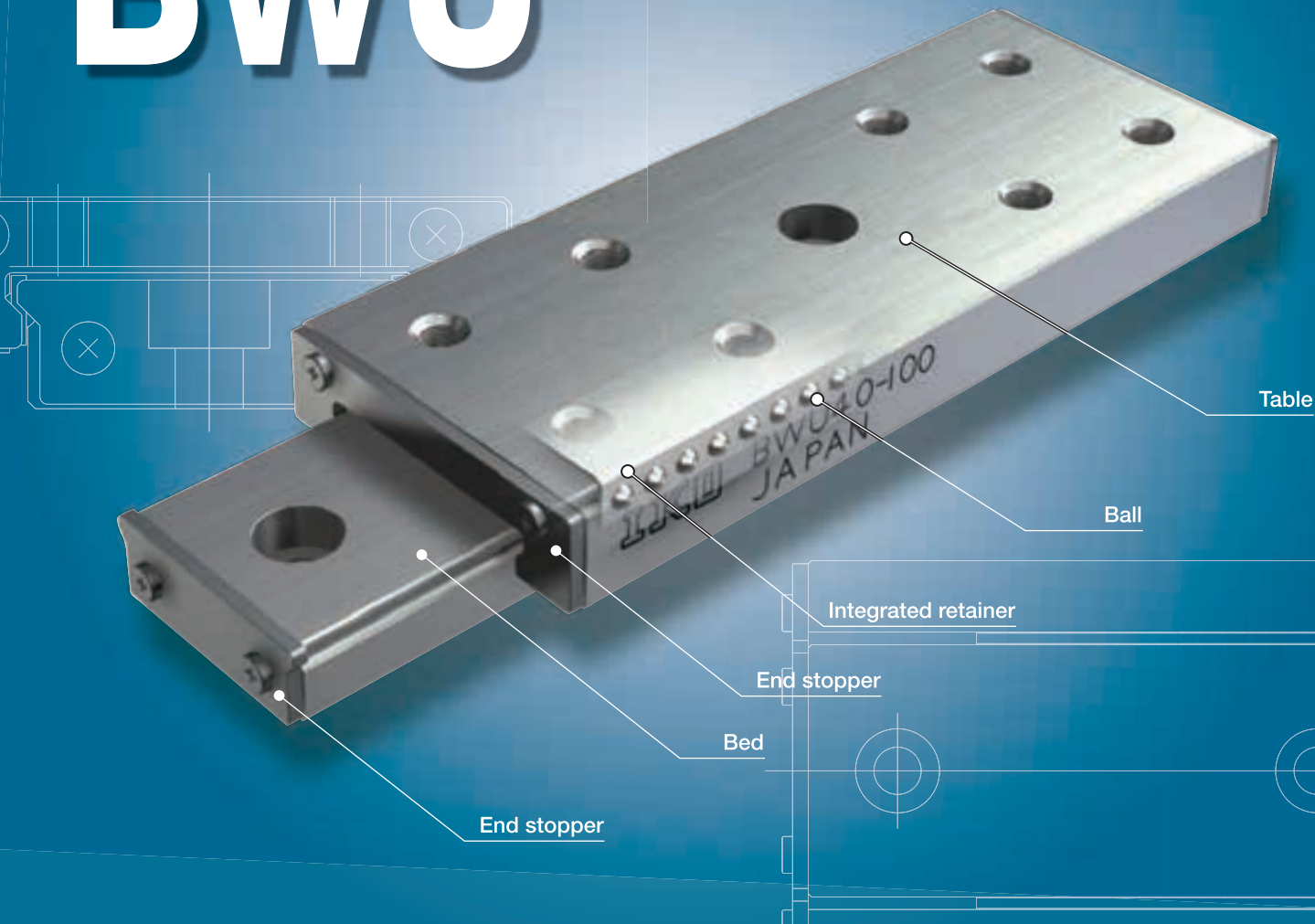


High Rigidity Precision Linear Slide Unit

BWU



Points

Simple limited linear motion guide structure

Small and simple limited stroke type structure incorporated with balls and retainer between integrated table and bed. With two-row four-point contact structure, stable accuracy and rigidity can be achieved even in applications where fluctuating load and complex load are applied.

High accuracy

Simultaneous grinding process of two-row track grooves is applied to table and bed, which provides small processing errors and realizes linear motion of high accuracy.

Smooth operations

As each component is finished with accuracy without recirculation resistance of the balls, light and smooth operations are obtained.

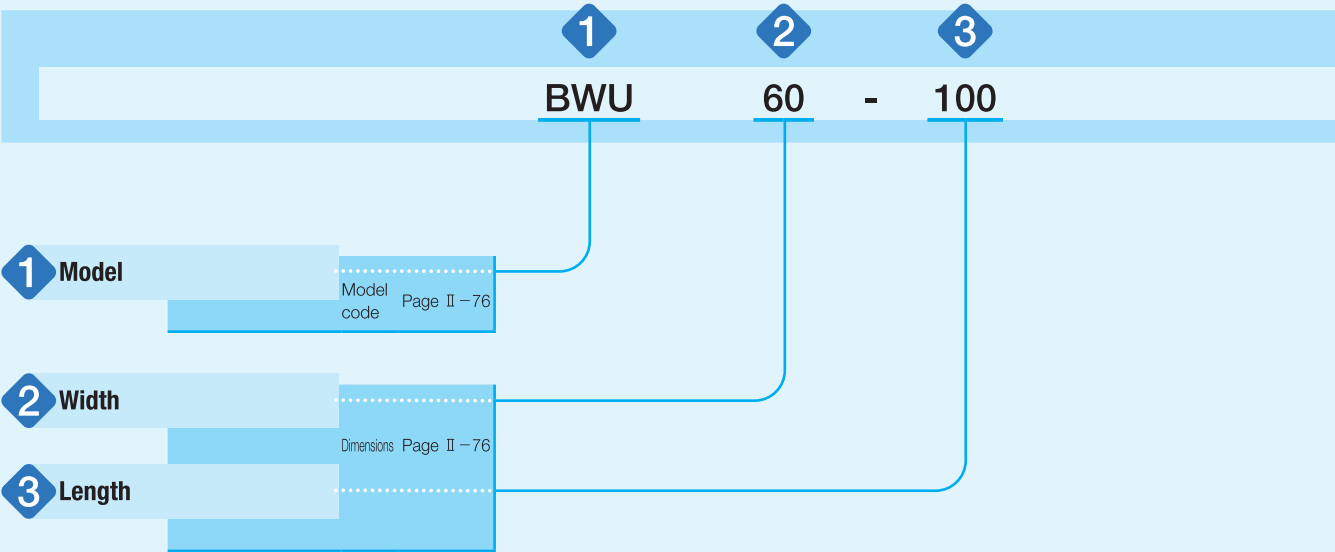
Stainless steel selections for excellent corrosion resistance

Stainless steel highly resistant to corrosion is used for all steel components, so that they are suitable for applications where rust prevention oil is not preferred, such as in a cleanroom environment.

Identification Number and Specification

Example of an identification number

The specification of BWU series is indicated by the identification number. Indicate the identification number, consisting of a model code and dimensions for each specification to apply.



Identification Number and Specification

| | | |
|----------|--|---|
| 1 Model | High Rigidity Precision Linear Slide Unit (BWU series) : BWU | |
| | For applicable models, width and length, see Table 1. | |
| 2 Width | 6, 8, 10, 12, 17, 25, 30, 40, 60 | Indicate the table width in mm. For applicable models, width and length, see Table 1. |
| 3 Length | | Indicate the table length in mm. For applicable models, width and length, see Table 1. |

Table 1 Width and length of BWU series

| Shape | Model | Width | Length | | | | | | | | | | | | |
|-------|-------|-------|--------|----|----|----|----|----|----|----|----|----|----|-----|-----|
| | | | 10 | 15 | 20 | 25 | 30 | 40 | 45 | 60 | 75 | 80 | 90 | 100 | 120 |
| | BWU | 6 | ○ | — | ○ | — | ○ | — | — | — | — | — | — | — | — |
| | | 8 | ○ | — | ○ | — | ○ | — | — | — | — | — | — | — | — |
| | | 10 | — | ○ | — | ○ | — | ○ | — | — | — | — | — | — | — |
| | | 12 | — | — | ○ | — | ○ | — | ○ | — | — | — | — | — | — |
| | | 17 | — | — | ○ | — | ○ | — | ○ | — | — | — | — | — | — |
| | | 25 | — | — | — | — | ○ | — | ○ | ○ | ○ | — | — | — | — |
| | | 30 | — | — | — | — | ○ | — | ○ | ○ | ○ | — | ○ | — | — |
| | | 40 | — | — | — | — | — | ○ | — | ○ | — | ○ | — | ○ | — |
| | | 60 | — | — | — | — | — | — | — | ○ | — | ○ | — | ○ | ○ |

Allowable Load

Allowable load refers to load of smooth rolling motion on contact surface to which maximum contact stress is applied and the sum of whose elastic deformation of rolling elements and raceway is small. Therefore, use applied load within the allowable load range if very smooth rolling motion and high accuracy are required.

Load Direction and Load Rating

The BWU series must be used with its load rating corrected in accordance to the load direction. The basic dynamic load rating and basic static load rating shown in the dimension table should be corrected to values in Table 2.

Table 2 Load ratings corrected for load direction

Upward load

Downward load

Lateral load

| Load rating and load direction | Basic dynamic load rating | | | Basic static load rating | | |
|--------------------------------|---------------------------|--------|---------|--------------------------|----------------|--------------------|
| | Load direction | | | Load direction | | |
| Width | Downward | Upward | Lateral | Downward | Upward | Lateral |
| 6~60 | C | C | 1.19C | C ₀ | C ₀ | 1.19C ₀ |

Accuracy

Accuracy of the BWU series is indicated in Table 3 and Table 4.

Table 3 Accuracy

unit: mm

| Item | Tolerance and allowance |
|---------------------------------|-------------------------|
| Dim. H tolerance | ±0.040 |
| Dim. N tolerance | ±0.050 |
| Parallelism at the table center | See Table 4 |
| Parallelism on the table side | See Table 4 |

Table 4 Running accuracy

unit: μm

| Nominal length L mm | | Parallelism at the table center ⁽¹⁾ | Parallelism on the table side ⁽²⁾ |
|---------------------|-------|--|--|
| Over | Incl. | | |
| — | 50 | 4 | 6 |
| 50 | 80 | 5 | 8 |
| 80 | 120 | 6 | 9 |

Notes ⁽¹⁾ Parallelism at the center of the table represents parallelism of height when the table is stroked.
⁽²⁾ Parallelism at the side of the table represents parallelism of the side (the opposite side of mark) when the table is stroked.

Preload

Preload for the BWU series is adjusted to proper preload state.

Lubrication

Grease is not pre-packed in the BWU series, so please perform adequate lubrication as needed. Upon delivery, anti-rust oil is applied. Therefore, perform cleaning with clean solution before mounting and apply high-quality lubrication oil or grease before use. For grease lubrication, use of high-quality lithium-soap base grease is recommended. Since no grease nipple or oil hole is provided, apply grease directly to the raceway part of the bed when supplying the grease.

Dust Protection

No dust protection seal is provided for BWU series. For applications in other than clean environment, cover the entire unit with a protective case, etc. to prevent harmful foreign substances such as dust and particles from outside from entering.

BWU・BSP(G)
BSU...A

Precaution for Use

Precaution for Mounting

- ① Handling

When high running accuracy is required, set the load point at the center of the table (or bed) and use with sufficient stroke length.

For the BWU series, the retainer may be deviated from the right position due to offset load or irregular and high-velocity motion, etc. Fully stroke it once in certain operating time or certain number of reciprocating motion to correct the retainer position.


Since there is no built-in mechanical stopper to regulate linear motion in the event of collision, install a stopper mechanism in proximity if risk of overstroke exists.

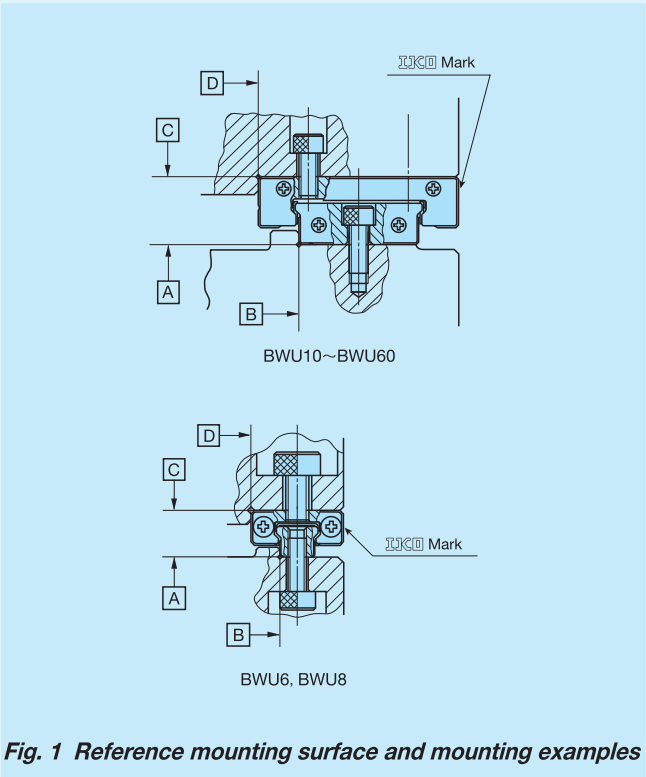
The fixing thread depth of mounting screws for table must not exceed the maximum fixing thread depth indicated in the table of dimensions. Since the mounting screw hole for the table is penetrated, the bed or retainer will be pushed by the screw if the fixing thread depth is too deep, and the running accuracy and life may be adversely affected.
- ② Operating temperature

As synthetic resin components are not used for the BWU series, it may be used at high temperature. However, when it exceeds 100°C, contact IKO.
- ③ Maximum velocity

Operating velocity should not exceed 30 m/min during operation.

- ① Reference mounting surface

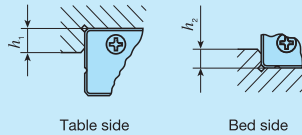
Reference mounting surface of the BWU series is the opposite side of the  mark. (See Fig. 1)



- ② Typical mounting structure

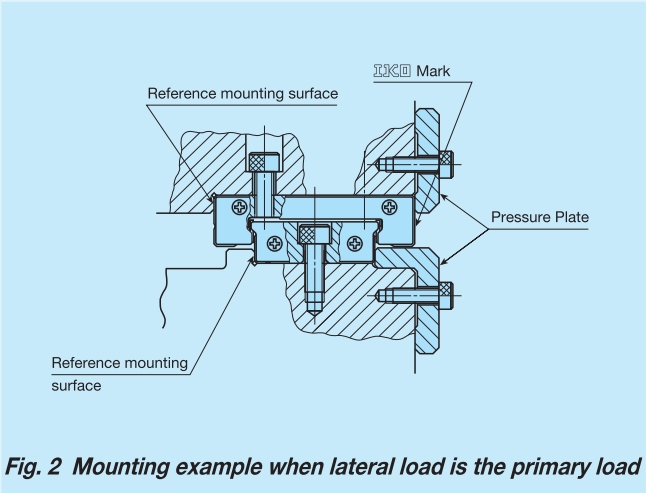
As indicated in Fig.1, reference mounting surfaces B and D, and mounting surfaces A and C are precisely ground. Therefore, by machining the reference mounting surface of the mating member and the mounting surface, such as machine or device, to high accuracy and mounting them properly, stable linear motion with high accuracy is realized.

For the opposite corner of the mating reference mounting, it is recommended to have relieved fillet as indicated in the illustration in Table 5. The value indicated in Table 5 is recommended for the shoulder height on the mating side.

| Table 5 Shoulder height | | |
|--|--|--|
|  | | |
| unit: mm | | |
| Width | Shoulder height of the table side h_1 | Shoulder height of the bed side h_2 |
| 6 | 1 | 0.5 |
| 8 | 1.2 | 0.8 |
| 10 | 1.2 | 0.8 |
| 12 | 1.5 | 0.8 |
| 17 | 2.5 | 1.2 |
| 25 | 2.5 | 1.5 |
| 30 | 3 | 2 |
| 40 | 3 | 2.5 |
| 60 | 4 | 2.5 |

- ③ When lateral load is the primary load

As indicated in Fig. 2, firmly fix the sides of the table and bed with pressure plates.



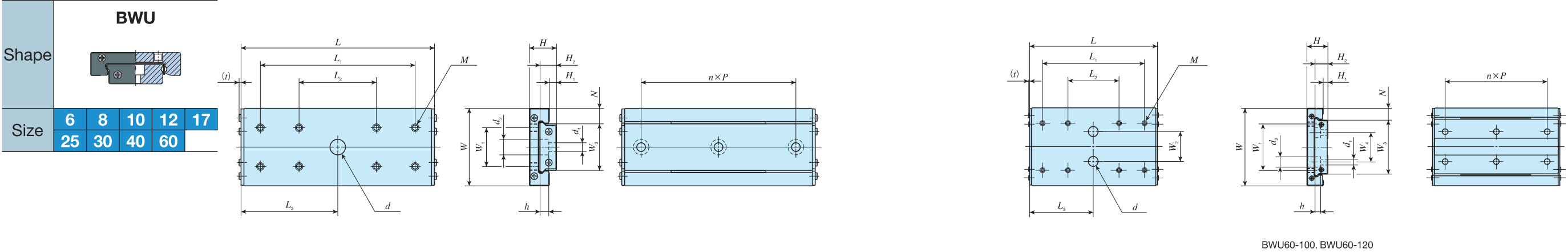
- ④ Tightening torque for fixing screw

Typical tightening torque for mounting of the BWU series to the steel mating member material is indicated in Table 6. If the mating member material is cast iron or aluminum alloy, reduce the tightening torque depending on the strength characteristics of the mating member material.

| Table 6 Tightening torque for fixing screw | |
|--|----------------------------|
| Bolt size | Tightening torque N · m |
| M1 ×0.25 | 0.04 |
| M1.4×0.3 | 0.10 |
| M1.6×0.35 | 0.15 |
| M2 ×0.4 | 0.31 |
| M3 ×0.5 | 1.1 |
| M4 ×0.7 | 2.5 |

Remark: The tightening torque is calculated based on property division A2-70 of stainless steel hexagon socket head bolt.

IKO High Rigidity Precision Linear Slide Unit



| Identification number | Mass (Ref.) g | Nominal dimensions mm | | | | | | Table mounting dimensions mm | | | | | | | | | | Bed mounting dimensions mm | | | | | | | | | | Basic dynamic load rating C N | Basic static load rating C ₀ N | Allowable load F N | Static moment rating T ₀ N · m |
|---------------------------|-------------------------|--------------------------|-----|----------------|-----|-----|-----------------------------|---------------------------------|----------------|----------------|------|-----------------------------------|----------------|--|----------------|-------|------|-------------------------------|----------------|----------------|--------|-------|-----------------|----------------|------|-------|-------|--|--|-------------------------------------|--|
| | | W | H | H ₁ | N | L | Maximum stroke length | W ₁ | L ₁ | L ₂ | M | Maximum fixing thread depth | W ₂ | | L ₃ | d | t | W ₃ | H ₂ | W ₄ | n | P | d ₁ | d ₂ | h | | | | | | |
| | | | | | | | | | | | | | | | | | | | | | | | | | | | | | | | |
| BWU 6- 10 | 1.0 | 6 | 3.2 | 0.7 | 2 | 10 | 3 | — | 4 | — | M1.4 | 0.8 | — | | — | — | 0.46 | 2 | 1.9 | — | 1 | 4 | M1.0 Through | — | — | 154 | 181 | 60.2 | 0.21 | | |
| BWU 6- 20 | 2.2 | | | | | 20 | 11 | | 10 | | | | | | | | | | | | 8 | 252 | | | | 361 | 120 | 0.42 | | | |
| BWU 6- 30 | 3.3 | | | | | 30 | 16 | | 18 | | | | | | | | | | | | 2 | 8 | | | | 355 | 587 | 196 | 0.68 | | |
| BWU 8- 10 | 1.7 | 8 | 4 | 1 | 2.5 | 10 | 4 | — | 5.5 | — | M2 | 0.8 | — | | — | — | 0.45 | 3 | 2.6 | — | 1 | 5 | M1.6 Through | — | — | 203 | 212 | 70.6 | 0.36 | | |
| BWU 8- 20 | 3.5 | | | | | 20 | 16 | | 10 | | | | | | | | | | | | 10 | 292 | | | | 353 | 118 | 0.60 | | | |
| BWU 8- 30 | 5.2 | | | | | 30 | 20 | | 21 | | | | | | | | | | | | 2 | 10 | | | | 442 | 635 | 212 | 1.1 | | |
| BWU 10- 15 ⁽¹⁾ | 3.2 | 10 | 4 | 1 | 3 | 15 | 8 | — | 6.5 | — | M2 | 0.8 | — | | 7.5 | 3 | 0.45 | 4 | 2.6 | — | 1 | 5 | 1.8 | 2.8 | 0.75 | 249 | 282 | 94.1 | 0.62 | | |
| BWU 10- 25 ⁽¹⁾ | 5.7 | | | | | 25 | 16 | | 13 | | | | | | — | — | | | | | | 10 | | | | 370 | 494 | 165 | 1.1 | | |
| BWU 10- 40 ⁽¹⁾ | 9.0 | | | | | 40 | 22 | | 26 | | | | | | 20 | 3 | | | | | | 3 | | | | 10 | 572 | 917 | 306 | 2.0 | |
| BWU 12- 20 ⁽²⁾ | 6.2 | 12 | 4.5 | 1 | 3 | 20 | 16 | — | 8 | — | M2 | 1.1 | — | | — | — | 0.45 | 6 | 2.8 | — | 1 | 7.5 | 2.4 | 4 | 1.5 | 292 | 353 | 118 | 1.1 | | |
| BWU 12- 30 ⁽²⁾ | 9.5 | | | | | 30 | 20 | | 15 | | | | | | — | — | | | | | | 15 | | | | 442 | 635 | 212 | 2.0 | | |
| BWU 12- 45 ⁽²⁾ | 14.1 | | | | | 45 | 30 | | 31 | | | | | | 22.5 | 4.5 | | | | | | 2 | | | | 15 | 603 | 988 | 329 | 3.2 | |
| BWU 17- 20 | 15.0 | 17 | 8 | 1.5 | 5 | 20 | 14 | 12 | 10 | — | M2 | 3 | — | | 10 | 4.5 | 0.8 | 7 | 5 | — | 1 | 7.5 | 2.4 | 4.2 | 2.3 | 588 | 635 | 212 | 2.5 | | |
| BWU 17- 30 | 23.7 | | | | | 30 | 19 | | 20 | | | | | | — | — | | | | | | 15 | | | | 874 | 1 110 | 370 | 4.4 | | |
| BWU 17- 45 | 35.4 | | | | | 45 | 29 | | 30 | | | | | | 22.5 | 4.5 | | | | | | 2 | | | | 15 | 1 200 | 1 750 | 582 | 6.9 | |
| BWU 25- 30 | 40.6 | 25 | 9 | 1.8 | 5.5 | 30 | 23 | 10 | 15 | — | M3 | 2.5 | — | | — | — | 0.9 | 14 | 5.2 | — | 1 | 15 | 3.5 | 6 | 3.2 | 783 | 953 | 318 | 7.1 | | |
| BWU 25- 45 | 62.5 | | | | | 45 | 28 | | 25 | | | | | | | | | | | | | 30 | | | | 1 200 | 1 750 | 582 | 13.0 | | |
| BWU 25- 60 | 84.3 | | | | | 60 | 38 | | 55 | | | | | | | | | | | | | 2 | | | | 1 490 | 2 380 | 794 | 17.7 | | |
| BWU 25- 75 | 104 | | | | | 75 | 48 | | 55 | | | | | | 37.5 | 6.5 | | | | | | 2 | | | | 1 760 | 3 020 | 1 010 | 22.5 | | |
| BWU 30- 30 | 64.4 | 30 | 12 | 3.4 | 6 | 30 | 23 | 14 | 15 | — | M3 | 3 | — | | — | — | 1.0 | 18 | 7.5 | — | 1 | 15 | 3.5 | 6.5 | 4.5 | 1 270 | 1 410 | 470 | 13.4 | | |
| BWU 30- 45 | 99.1 | | | | | 45 | 29 | | 25 | | | | | | | | | | | | | 30 | | | | 1 920 | 2 540 | 847 | 24.1 | | |
| BWU 30- 60 | 133 | | | | | 60 | 35 | | 55 | | | | | | | | | | | | | 2 | | | | 2 490 | 3 670 | 1 220 | 34.9 | | |
| BWU 30- 75 | 165 | | | | | 75 | 47 | | 55 | | | | | | | | | | | | | 37.5 | | | | 6.5 | 2 | 2 880 | 4 520 | 1 510 | 42.9 |
| BWU 30- 90 | 199 | | | | | 90 | 59 | | 45 | | | | | | | | | | | | | 3 250 | | | | 5 360 | 1 790 | 50.9 | | | |
| BWU 40- 40 | 136 | 40 | 14 | 3.5 | 8 | 40 | 31 | 20 | 20 | — | M4 | 4 | — | | — | — | 1.0 | 24 | 8.5 | — | 1 | 20 | 4.5 | 8 | 4.5 | 2 040 | 2 210 | 735 | 27.8 | | |
| BWU 40- 60 | 209 | | | | | 60 | 39 | | 40 | | | | | | | | | | | | | 40 | | | | 3 100 | 3 970 | 1 320 | 50.0 | | |
| BWU 40- 80 | 281 | | | | | 80 | 47 | | 80 | | | | | | | | | | | | | 2 | | | | 4 010 | 5 730 | 1 910 | 72.2 | | |
| BWU 40-100 | 346 | | | | | 100 | 63 | | 80 | | | | | | 40 | 4 640 | | | | | 7 060 | 2 350 | | | | 88.9 | | | | | |
| BWU 60- 60 | 363 | 60 | 16 | 3.6 | 9 | 60 | 34 | 36 | 40 | — | M4 | 4 | — | | — | — | 1.1 | 42 | 10 | 23 | 1 | 40 | 4.5 | 8 | 4.5 | 4 740 | 5 690 | 1 900 | 124 | | |
| BWU 60- 80 | 487 | | | | | 80 | 45 | | 40 | | | | | | | | | | | | | 40 | | | | 5 930 | 7 820 | 2 610 | 171 | | |
| BWU 60-100 | 597 | | | | | 100 | 56 | | 80 | | | | | | | | | | | | | 50 | | | | 8 | 2 | 7 020 | 9 960 | 3 320 | 217 |
| BWU 60-120 | 723 | | | | | 120 | 68 | | 100 | | | | 60 | | | 8 050 | | | | | 12 100 | 4 030 | | | | 264 | | | | | |

Notes ⁽¹⁾ Bed mounting bolts (cross-recessed pan head screw for precision equipment M1.6×5) are appended.
⁽²⁾ Bed mounting bolts (cross-recessed pan head screw for precision equipment M2×4) are appended.

BWU · BSP(G)
BSU...A