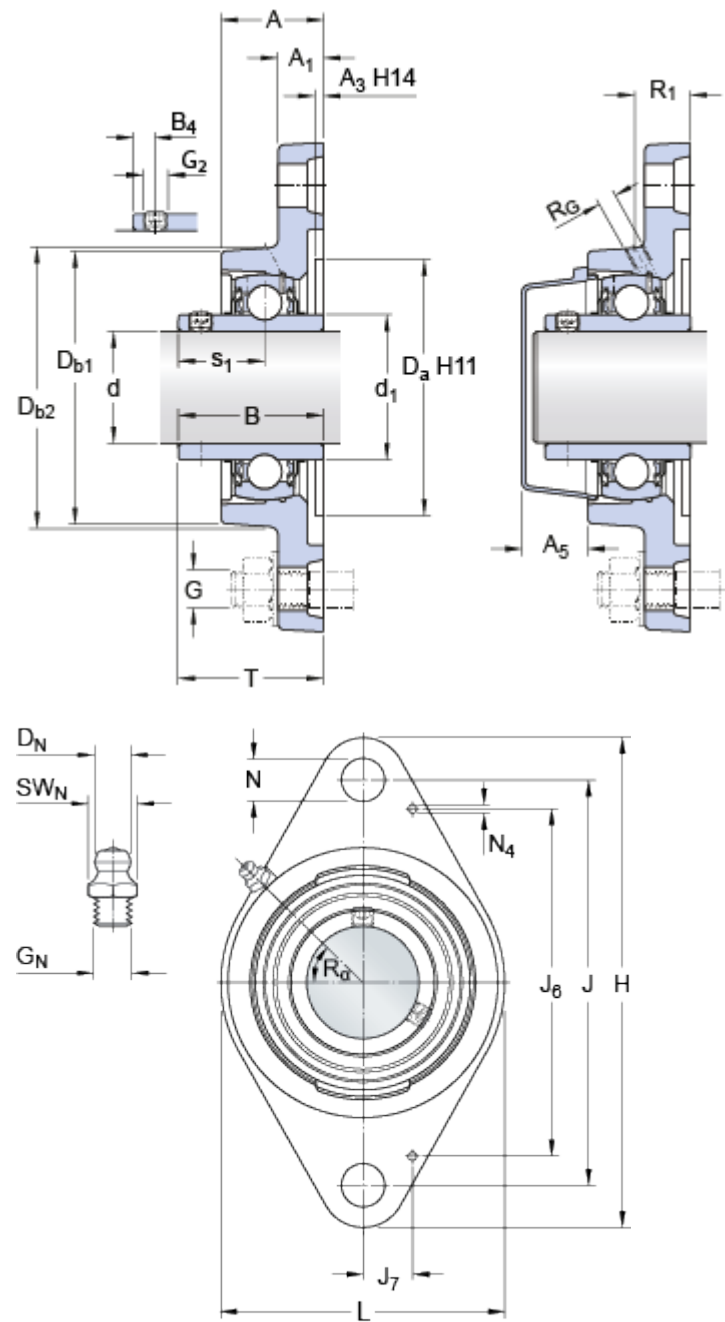


FYTB 35 TF

Compliance with standard	ISO
Housing material	Cast iron
Sealing solution	Standard seals with additional flingers

Dimensions



d	35	mm
d ₁	≈ 46.1	mm
D _a	88.9	mm
D _{b1}	88	mm
D _{b2}	96	mm
A	34.5	mm
A ₁	13	mm
A ₃	3.2	mm
A ₅	24.5	mm
B	42.9	mm
B ₄	6	mm
J	130	mm
H	156	mm
L	96	mm
N	14	mm
s ₁	25.4	mm
T	46.4	mm

Threaded hole

R _G	1/4-28 UNF	
R ₁	22	mm
R _α	45	°

Grease fitting

D _N	6.5	mm
SW _N	7	mm

		G _N	1/4-28 SAE-LT	
		Dowel pins		
		J ₆	106	mm
		J ₇	15	mm
		N ₄	2	mm
Calculation data				
Basic dynamic load rating		C	25.5	kN
Basic static load rating		C ₀	15.3	kN
Fatigue load limit		P _u	0.655	kN
Limiting speed			5300	r/min
(with shaft tolerance h6)				
Mass				
Mass bearing unit			1.15	kg
Mounting information				
Thread grub screw		G ₂	M6x0.75	
Hexagonal key size for grub screw		N	3	mm
Recommended tightening torque for grub screw			4	N·m
Recommended diameter for attachment bolts, mm		G	12	mm
Recommended diameter for attachment bolts, inch		G	0.5	in
Included products				
Housing			FYTB 507 M	
Bearing			YAR 207-2F	
Associated products				
End cover			ECY 207	