

**Technical details:**

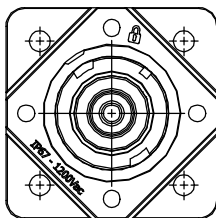
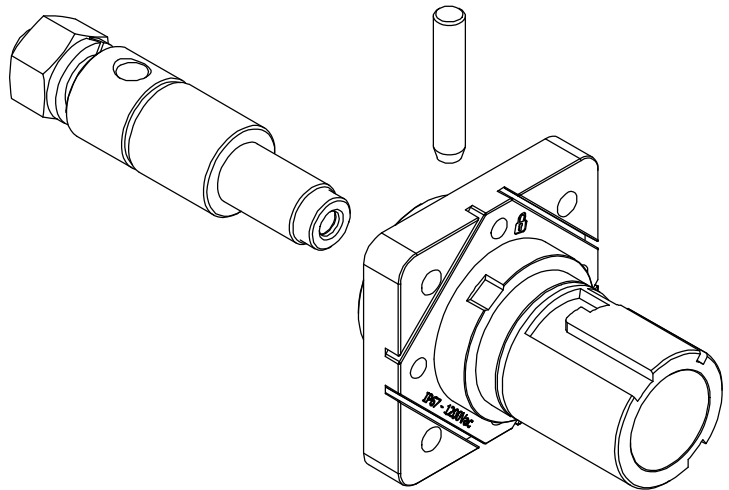
- IP protection IP67 (when mated)
- IP2X finger protected contacts

**Electrical characteristics:**

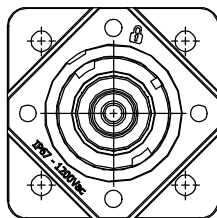
Operating Voltage: 1250V  
Rated Current: 250A (brass contact - yy=T2)  
400A (copper contact - yy=T4)

**Variable encoding:**

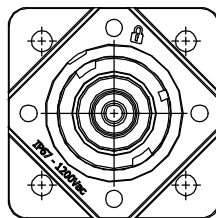
ww: E /N /L1 /L2 /L3  
xx: BR /BK /GY/BU /GR /RD /YL /WH depends on ww  
(see "color coding table" on the catalog)  
yy: T2 /T4



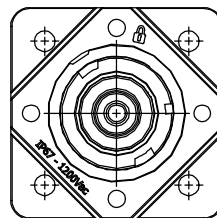
L1



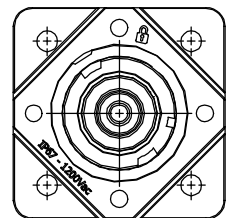
L2



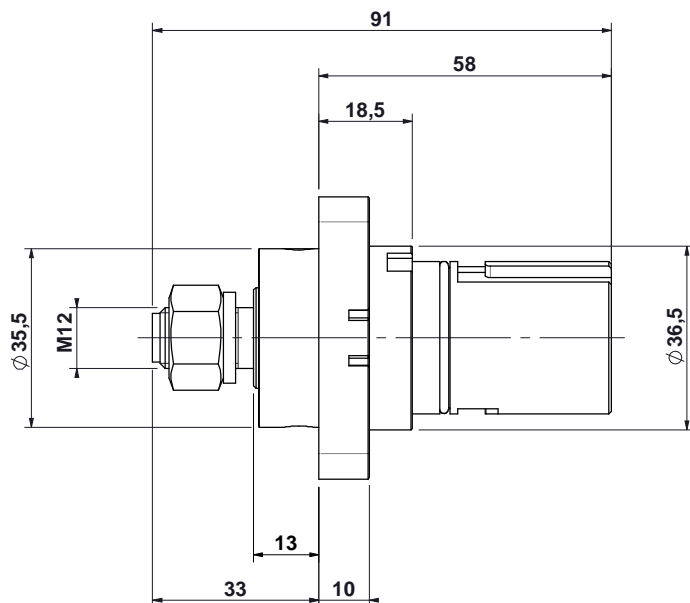
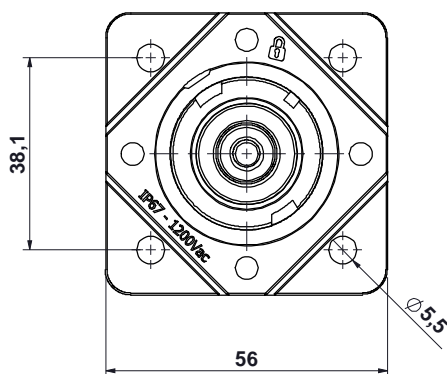
L3



N



E



revision 1

Date 17/12/18

Note



**van-system**  
A Radiall Company

Van-System s.r.l. Via Zambelletti 19 Baranzate - MI Italia

Description

SPPC HK PD ww xx M12-yy

Attached

Drawing N°

**C1200-3247**

Scale

1:1.5

Drawn by

F. Colombo

Checked

Approved

This copyrighted document is the property of Van-System srl and is furnished on the condition that it is not to be disclosed, reproduced in whole or in part, or used to solicit quotations from competitive sources, or used for manufacture by anyone other than Van-System srl without written permission from Van-System srl. The information herein has been developed at Van-System's expense and may be used for engineering evaluation and incorporation into technical specifications and other documents which specify procurement of products from Van-System srl