

## Data Sheet | Item Number: 285-195

2-conductor through terminal block; 95 mm<sup>2</sup>; lateral marker slots; only for DIN 35 x 15 rail; POWER CAGE CLAMP; 95,00 mm<sup>2</sup>; gray

<https://www.wago.com/285-195>

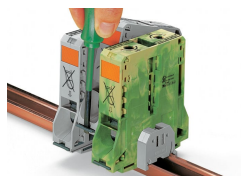


### Installation Notes

#### Installation



Snapping a terminal block onto DIN-rail (to the left or to the right).



Removing a terminal block from the assembly (to the left or to the right).

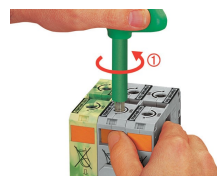
#### Conductor termination



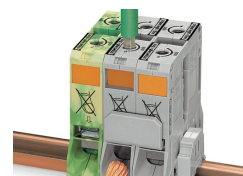
For the optimal clamping force: Bend conductor. Cut conductor to length (conductor end must be straight). Strip conductor.



Always observe the on-unit printed strip length guide!



Conductor termination – step 1: Rotate the T-wrench counter-clockwise to the stop. Next, push in the orange locking tab. The clamp is locked open for hands-free wiring.

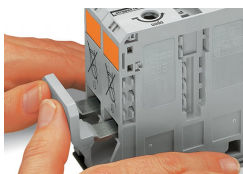


Conductor termination – step 2: Insert a stripped conductor into the clamping unit until it hits the backstop. Hold in this position.

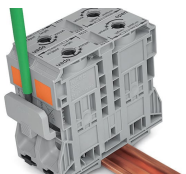


Conductor termination – step 3: A short counter-clockwise rotation releases the tab. When unlocked, the T-wrench rotates clockwise, securely clamping the conductor.

#### Commoning



Commoning with an adjacent jumper: insert the jumper above the conductor entry hole – prior to conductor termination. The nominal cross-section remains unchanged.



Removing jumper via operating tool.

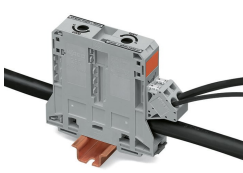
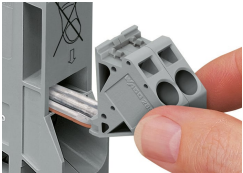
Cover



Protective warning marker may indicate:  
Notice: Power is still on even after switching off the main switch!

Yellow, detachable finger guards provide touch-proof safety by shielding jumper contact slots and/or unused conductor entries.

Power tap



Easily and consistently tap directly into the power supply. Insert the unwired tap before opening the clamping unit.

The power taps enable the distribution of the L1, L2 and L3 potentials. The warning covers and finger guards ensure IP20 touch-proof protection.

Current and voltage tap



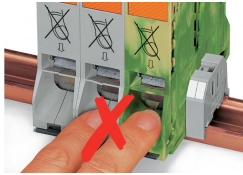
Installation via jumper slot

Feedthrough for primary conductors

Push-in CAGE CLAMP® connection technology

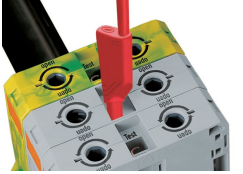
Integrated fuse

Security



Risk of Injury!  
Do not insert fingers in the conductor entry!

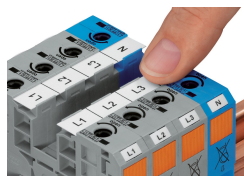
Testing



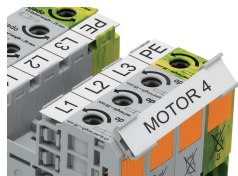
Testing via touch-proof 4 mm Ø test plugs (not available from WAGO, but offered by industry suppliers such as, Multi-Contact Deutschland GmbH).

TestingVoltage measurements can be performed, e.g., using a 2-pole voltage tester (206-707).

## Marking



WMB markers or self-adhesive, printable marking strips can be accommodated on 35, 50 and 95 mm<sup>2</sup> high-current terminal blocks.



Marker carrier (285-442) for marking strips (2009-110) or 2 WMB markers for 285-13x, 285-15x and 285-19x Terminal Blocks