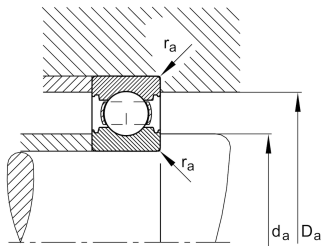
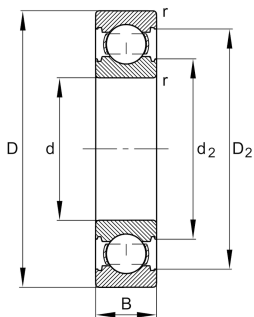


**FAG****6208-C-C3**

Deep groove ball bearing

Deep groove ball bearing 62...-C, single row,
Generation C, steel sheet metal cage

Technical information



Your current product variant

| | | |
|----------------------------------|--------------|---|
| Changed internal design | C | GenerationC |
| Sealing | Without | Not sealed |
| Cage | JN | Steel sheet metal |
| Tolerance class | P6 | Class6 (P6), better than PN |
| Dimensional / heat stabilization | SN | Rings dimensional stabilized up to 120° |
| Lubricant | Without | Bearing not greased |
| Radial internal clearance | C3 (Group 3) | Internal clearance larger than CN |
| Bore type | Z | Cylindrical |

Main Dimensions & Performance Data

| | | |
|-----------------|--------------|-----------------------------------|
| d | 40 mm | Bore diameter |
| D | 80 mm | Outside diameter |
| B | 18 mm | Width |
| C _r | 33,500 N | Basic dynamic load rating, radial |
| C _{0r} | 17,800 N | Basic static load rating, radial |
| C _{ur} | 1,230 N | Fatigue load limit, radial |
| n _G | 13,600 1/min | Limiting speed |
| n _{gr} | 10,500 1/min | Reference speed |
| ≈m | 0.336 kg | Weight |



Mounting dimensions

| | | |
|--------------------|-------|--------------------------------------|
| d _{a min} | 47 mm | Minimum diameter shaft shoulder |
| D _{a max} | 73 mm | Maximum diameter of housing shoulder |
| r _{a max} | 1 mm | Maximum fillet radius |

Dimensions

| | | |
|------------------|----------|------------------------------|
| r _{min} | 1.1 mm | Minimum chamfer dimension |
| D ₁ | 67.6 mm | Shoulder diameter outer ring |
| D ₂ | 70.56 mm | Caliber diameter outer ring |
| d ₁ | 51.88 mm | Shoulder diameter inner ring |
| d ₂ | 49.3 mm | Caliber diameter inner ring |

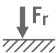





Temperature range

| | | |
|------------------|--------|----------------------------|
| T _{min} | -30 °C | Operating temperature min. |
| T _{max} | 120 °C | Operating temperature max. |

Calculation factors

| | | |
|----------------|----|--------------------|
| f ₀ | 14 | Calculation factor |
|----------------|----|--------------------|

Characteristics

| | |
|---|------------------------------|
|  | Radial load |
|  | Axial load in one direction |
|  | Axial load in two directions |
|  | Grease Lubrication |
|  | Oil Lubrication |
|  | Not sealed |