



12SX1-T



Actual product appearance may vary.

SX Series Subminiature Basic Switch, Single Pole Double Throw (SPDT), 125 Vac, 1 A, Pin Plunger Actuator, Solder Termination

Features

- Long operating life
- Elongated mounting hole for easier, more accurate mounting
- Choice of actuation (plunger, as well as a variety of integral and auxiliary actuators)
- Choice of electrical termination (solder, quick connect, PCB)
- Choice of operating characteristics
- Optional series constructions available (gold contacts for low energy switching, bifurcated gold contacts for maximum reliability, power load switching capability to 7 A)
- MIL-PFR-8805 qualified listings available

Potential Applications

- Aerospace
- Appliances
- Vending machines
- Timing devices
- Office equipment
- Computer/business equipment
- Test instruments
- Medical/dental equipment
- Communications equipment
- HVAC equipment
- Manually operated devices
- Valves

Description

MICRO SWITCH™ SX Series subminiature basic switches are used for simple or precision on/off application needs. They are small, precision snap-action switches that are ideal where savings in space and weight are important.

Product Specifications	
Switch Type	Subminiature 10,2 mm H x 5,08 mm W x 12,7 mm L [0.4 in H x 0.20 in W x 0.5 in L]
Sealed	No
Ampere Rating	1 A
Circuitry	Single Pole Double Throw (SPDT)
Actuator	Pin Plunger
Termination	Solder
Operating Temperature Range	-55 °C to 125 °C [-67 °F to 257 °F]
Voltage	125 Vac
Approvals	CE, CSA, UL
Contact Type	Bifurcated Gold
Operating Force (O.F.)	0,7 N - 1,39 N [2.5 oz - 5.0 oz] max.

Release Force (R.F.)	0,28 N [1.0 oz] min.
Pretravel (P.T.)	0,5 mm [0.020 in] max.
Overtravel (O.T.)	0,1 mm [0.004 in] min.
Differential Travel (D.T.)	0,076 mm [0.003 in] max.
Operating Position (O.P.)	8,13 mm \pm 0,38 mm [0.320 in \pm 0.015 in]
Housing Material	General Purpose Phenolic
High Temperature	204 °C [400 °F]
UL File #	E12252
CSA File #	LR41372
Agency Approvals and Standards	1054
Mounting Centers	4,83 mm [0.19 in]
Maximum Tightening Torque	0,22 N m [2.0 in lb]
Weight	1,36 g [0.003 lb]
Package Height	8,89 mm [0.35 in]
Package Width	5,0 mm [0.20 in]
Package Length	12,7 mm [0.50 in]
Recommended For	Best reliability with higher current rating (bifurcated gold contacts)
Availability	Global
UNSPSC Code	30211905
UNSPSC Commodity	30211905 Snap switches
Series Name	SX

MICRO SWITCH

FREEPORT ILLINOIS, U.S.A
A DIVISION OF HONEYWELL

FED. MFG. CODE 91929

SWITCH-BASIC

CATALOG LISTING

12SXI-T

PRODUCT CODE

VDK1000

REPLACES X42190-SX

RELEASE NO. PR-1410

15 APR 05

AK

CHECK

REVISIONS

A	PR-1410	L S D	19 AUG 70
B	C031232	R E R	31 OCT 72
C	C071376	W J C	14 NOV 91
D	C071574	J A L	4 JUN 92
E	201033	D L T	24 AUG 00
F	0012143	CMH	15 APR 05

CHECK

15 MAY 69

CHECK

15 MAY 69

DAW

CHECK

15 MAY 69

CHECK

14 MAY 69

DAW

CHECK

14 MAY 69

CHECK

14 MAY 69

12SXI-T

PAGE 1 OF 1

M

DRAWING NUMBER

ISSUE

7

AK

15 APR 05

CHECK

15 MAY 69

CHECK

15 MAY 69

CHECK

15 MAY 69

CHECK

15 MAY 69

CHECK

15 MAY 69

CHECK

15 MAY 69

CHECK

15 MAY 69

CHECK

15 MAY 69

CHECK

15 MAY 69

CHECK

15 MAY 69

CHECK

15 MAY 69

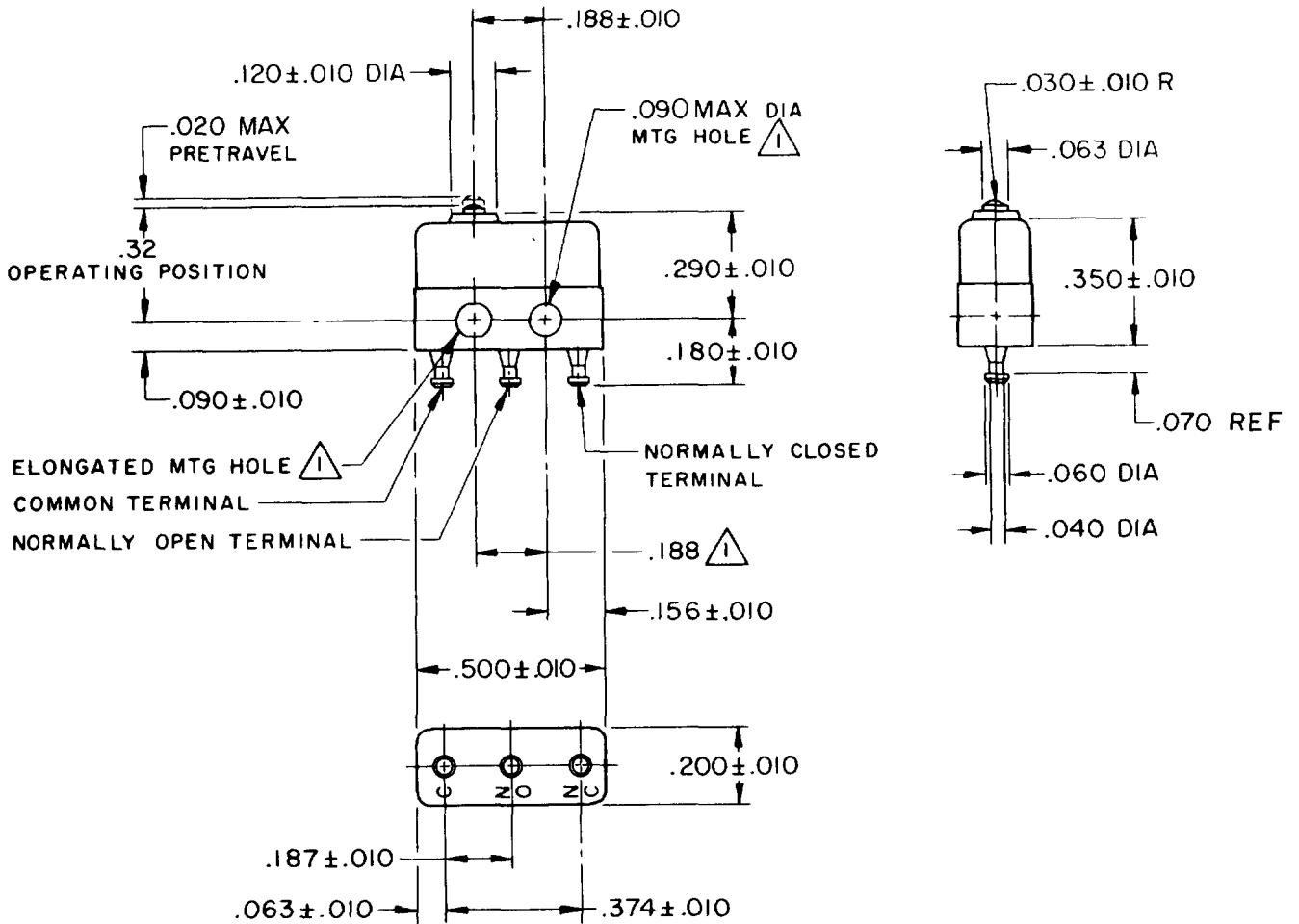
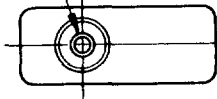
CHECK

15 MAY 69

CHECK

15 MAY 69

PLASTIC PLUNGER



NOTES

- 1 MOUNTING HOLES WILL ACCEPT PINS OR SCREWS OF .087 MAX DIA ON .188 ± .002 CENTERS
- 2 - TERMINALS ARE PLATED FOR SOLDERING
- 3 - SWITCH WILL WITHSTAND TEMPERATURE OF 250° F
- 4 - MOVABLE CONTACT MATERIAL - 24K SOLID GOLD
- 5 - STATIONARY CONTACT MATERIAL - GOLD ALLOY

THIS DRAWING COVERS A PROPRIETARY ITEM AND IS THE PROPERTY OF MICRO SWITCH, A DIVISION OF HONEYWELL. THIS DRAWING IS NOT TO BE COPIED OR USED WITHOUT THE APPROVAL OF MICRO SWITCH.

CHARACTERISTICS

OPERATING FORCE - - - - - 5 OZ MAX
RELEASE FORCE - - - - - 1 OZ MIN
DIFFERENTIAL TRAVEL - - - - .003 MAX
OVERTRAVEL - - - - - .004 MIN

ELECTRICAL DATA

CONTACT ARRANGEMENT
S P D T
30 VOLTS DC RATING
INDUCTIVE - - - - SEA LEVEL - - - - 0.5 AMP
50,000 FT - - - - 0.5 AMP
RESISTIVE - - - - SEA LEVEL - - - - 1 AMP
50,000 FT - - - - 1 AMP
MAXIMUM INRUSH - - - - - 2 AMP

SCALE 2 TO 1

DO NOT SCALE PRINT

UNLESS OTHERWISE NOTED
DIMENSIONS ARE IN INCHES
TOLERANCES ARE:
ONE PLACE (.0) ± .030
TWO PLACE (.00) ± .015
THREE PLACE (.000) ± .005
ANGLES ±

APPROVALS

KEMA, CE
UL, CSA

1A 250V ~ T125 25E3
1A 125 VAC



BRAND L22J

WEIGHT .003 LB MAX

FO-50378-1A
RASTER
DRAWN